

# SACC-CI-M12FS-12CON-L90 SH - Contact carrier



1424199

<https://www.phoenixcontact.com/us/products/1424199>

Please be informed that the data shown in this PDF document is generated from our online catalog. Please find the complete data in the user documentation. Our general terms of use for downloads are valid.



Contact carrier, 12-position, Socket, angled, M12, coding: A, PCB mounting, Wave soldering, Alternative product in accordance with RoHS II without Exemption 6c (Pb < 0.1 %) item no.: 1239456

## Your advantages

- Reduced mounting costs thanks to two-piece device connector
- All common pin assignments and codings available
- Easy device integration thanks to mechanical port screw connections with threaded attachment, press-in contour or direct integration in the front plate
- Additional gasket for the device when not plugged in

## Commercial data

Item number	1424199
Packing unit	20 pc
Minimum order quantity	20 pc
Sales key	AB23
Product key	ABQAHG
Catalog page	Page 253 (C-2-2013)
GTIN	4046356692939
Weight per piece (including packing)	6.2 g
Weight per piece (excluding packing)	5.895 g
Customs tariff number	85366990
Country of origin	DE

## Technical data

### Notes

Notes on operation	The electrical and mechanical data specified assume that the connector pair is correctly locked and mounted. If the connector is unlocked and if there is a danger of contamination, the connector must be sealed using a protective cap > IP54. Influences arising from litz wires, cables or PCB assembly must also be taken into consideration.
--------------------	--

### Product properties

Product type	Contact insert
Application	Signal
Number of positions	12
Seal present	yes
Shielded	yes
Coding	A
Thread type	M12

### Insulation characteristics

Overvoltage category	III
Degree of pollution	3

### Electrical properties

Rated surge voltage	0.8 kV
Contact resistance	$\leq 3 \text{ m}\Omega$
Insulation resistance	$\geq 100 \text{ M}\Omega$
Nominal voltage $U_N$	30 V
Nominal current $I_N$	1.5 A

### Connection data

Connection method	Wave soldering
-------------------	----------------

### Material specifications

Flammability rating according to UL 94	V0
Seal material	FKM
Contact material	CuZn
Contact surface material	Au
Contact carrier material	PA 6T

### Connector

#### Connection 1

Head design	Socket
Head cable outlet	angled
Head thread type	M12

# SACC-CI-M12FS-12CON-L90 SH - Contact carrier



1424199

<https://www.phoenixcontact.com/us/products/1424199>

Coding	A
--------	---

## Mechanical properties

### Mechanical data

Insertion/withdrawal cycles	> 100
-----------------------------	-------

## Environmental and real-life conditions

### Ambient conditions

Degree of protection	IP67
	IP67
Ambient temperature (operation)	-25 °C ... 85 °C (Plug / socket)
	-40 °C ... 85 °C (without mechanical actuation)

## Standards and regulations

### M12

Standard designation	M12 connector
Standards/specifications	IEC 61076-2-101

## Mounting

Mounting type	PCB mounting
---------------	--------------

## Packaging specifications

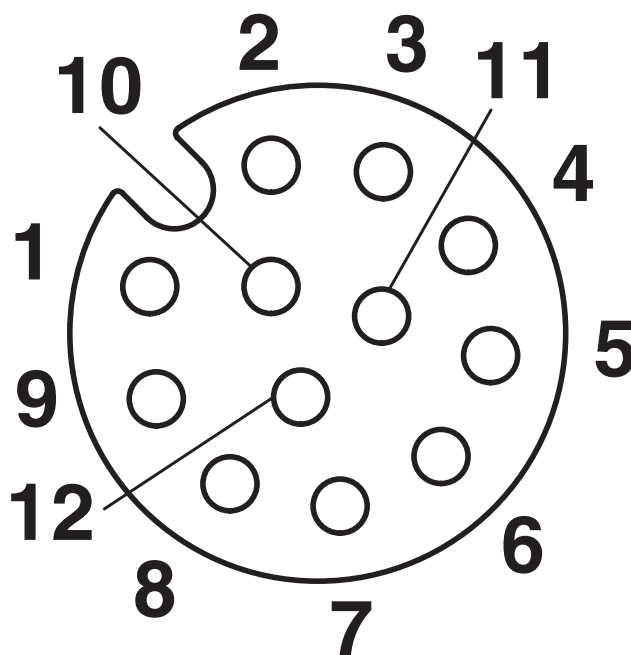
Type of packaging	Blister
-------------------	---------

1424199

<https://www.phoenixcontact.com/us/products/1424199>

## Drawings

Schematic diagram



Pin assignment M12, 12-pos., female side view

# SACC-CI-M12FS-12CON-L90 SH - Contact carrier




1424199

<https://www.phoenixcontact.com/us/products/1424199>

## Approvals

To download certificates, visit the product detail page: <https://www.phoenixcontact.com/us/products/1424199>

<div> <b>UL Recognized</b> Approval ID: E118976-20100522</div>				
	Nominal voltage $U_N$	Nominal current $I_N$	Cross section AWG	Cross section $\text{mm}^2$
	30 V	1.5 A	26 - 26	-

# SACC-CI-M12FS-12CON-L90 SH - Contact carrier



1424199

<https://www.phoenixcontact.com/us/products/1424199>

## Classifications

### ECLASS

ECLASS-11.0	27440102
ECLASS-12.0	27440116
ECLASS-13.0	27440116

### ETIM

ETIM 9.0	EC002635
----------	----------

### UNSPSC

UNSPSC 21.0	39121400
-------------	----------

Environmental product compliance

EU RoHS	
Fulfills EU RoHS substance requirements	Yes
Exemption	6(c)
China RoHS	
Environment friendly use period (EFUP)	EFUP-50
	An article-related China RoHS declaration table can be found in the download area for the respective article under "Manufacturer declaration". For all articles with EFUP-E, no China RoHS declaration table issued and required.
EU REACH SVHC	
REACH candidate substance (CAS No.)	Lead(CAS: 7439-92-1)
SCIP	5f81b00a-d186-4dd8-ab1c-36323a3e64eb

# SACC-CI-M12FS-12CON-L90 SH - Contact carrier



1424199

<https://www.phoenixcontact.com/us/products/1424199>

## Accessories

### PROT-M12 - Screw plug

1680539

<https://www.phoenixcontact.com/us/products/1680539>



An M12 screw plug for the unoccupied M12 sockets of the sensor/actuator cable, boxes and flush-type connectors

---

### PROT-M12 SH - Screw plug

1503302

<https://www.phoenixcontact.com/us/products/1503302>



An M12 screw plug for the unoccupied M12 sockets of the shielded sensor/actuator cable, boxes and flush-type connectors



## SACC-CI-M12FS-12CON-L90 SH - Contact carrier

1424199

<https://www.phoenixcontact.com/us/products/1424199>



## PROT-M12 FB - Screw plug

1555538

<https://www.phoenixcontact.com/us/products/1555538>



M12 high-grade steel screw plug, for unoccupied M12 sockets of the sensor/actuator cables, boxes and flush-type connectors for the food industry

---

## SACC-M12-SCO NUT - Housing screw connection

1552243

<https://www.phoenixcontact.com/us/products/1552243>



Housing screw connection, Socket, M12-SPEEDCON, Front mounting, M12 x 1, Alternative product in accordance with RoHS II without Exemption 6c (Pb < 0.1 %) item no.: 1237399

## SACC-CI-M12FS-12CON-L90 SH - Contact carrier

1424199

<https://www.phoenixcontact.com/us/products/1424199>



## SACC-DSIV-M12-NUT - Housing screw connection

1416144

<https://www.phoenixcontact.com/us/products/1416144>



Housing screw connection, Pin, M12, Front mounting, Alternative product in accordance with RoHS II without Exemption 6c (Pb < 0.1 %) item no.: 1239107

---

## SACC-M12-SCO NUT L 90 - Housing screw connection

1432460

<https://www.phoenixcontact.com/us/products/1432460>



Housing screw connection, M12-SPEEDCON, Front mounting, M12 x 1, Alternative product in accordance with RoHS II without Exemption 6c (Pb < 0.1 %) item no.: 1237409

# SACC-CI-M12FS-12CON-L90 SH - Contact carrier



1424199

<https://www.phoenixcontact.com/us/products/1424199>

## SACC-BP-F-M12/M15-6-THR - Housing screw connection

1414004

<https://www.phoenixcontact.com/us/products/1414004>



Housing screw connection, Socket, M12, Rear mounting, M15 x 1, THR solder connection, Alternative product in accordance with RoHS II without Exemption 6c (Pb < 0.1 %) item no.: 1239056

---

## SACC-BP-F-M12/M15-7-THR - Housing screw connection

1414003

<https://www.phoenixcontact.com/us/products/1414003>



Housing screw connection, Socket, M12, Rear mounting, M15 x 1, THR solder connection, Alternative product in accordance with RoHS II without Exemption 6c (Pb < 0.1 %) item no.: 1239055

# SACC-CI-M12FS-12CON-L90 SH - Contact carrier



1424199

<https://www.phoenixcontact.com/us/products/1424199>

## SACC-BP-F-M12/M15-6-THR SCO - Housing screw connection

1414020

<https://www.phoenixcontact.com/us/products/1414020>



Housing screw connection, Socket, M12-SPEEDCON, Rear mounting, M15 x 1, THR solder connection, Alternative product in accordance with RoHS II without Exemption 6c (Pb < 0.1 %) item no.: 1239057

---

## SACC-BP-F-M12/M15-7-THR SCO - Housing screw connection

1414005

<https://www.phoenixcontact.com/us/products/1414005>



Housing screw connection, Socket, M12-SPEEDCON, Rear mounting, M15 x 1, THR solder connection, Alternative product in accordance with RoHS II without Exemption 6c (Pb < 0.1 %) item no.: 1237398

# SACC-CI-M12FS-12CON-L90 SH - Contact carrier



1424199

<https://www.phoenixcontact.com/us/products/1424199>

## SACC-BP-F-M12/THR-1,0/1,8-9TIP - Housing screw connection

1419630

<https://www.phoenixcontact.com/us/products/1419630>



M12 threaded sleeve with tolerance-compensating function, for straight, THR solderable M12 socket contact inserts. Suitable for 1.0 mm ... 1.8 mm thick front plates.

---

## SACC-BP-F-M12/THR-1,7/2,5-9TIP - Housing screw connection

1419631

<https://www.phoenixcontact.com/us/products/1419631>



M12 threaded sleeve with tolerance-compensating function, for straight, THR solderable M12 socket contact inserts. Suitable for 1.7 mm ... 2.5 mm thick front plates.

# SACC-CI-M12FS-12CON-L90 SH - Contact carrier



1424199

<https://www.phoenixcontact.com/us/products/1424199>

## SACC-BP-F-M12/THR-2,4/3,2-9TIP - Housing screw connection

1419633

<https://www.phoenixcontact.com/us/products/1419633>



M12 threaded sleeve with tolerance-compensating function, for straight, THR solderable M12 socket contact inserts. Suitable for 2.4 mm ... 3.2 mm thick front plates.

---

## SACC-BP-F-M12/THR-3,1/3,9-9TIP - Housing screw connection

1419634

<https://www.phoenixcontact.com/us/products/1419634>



M12 threaded sleeve with tolerance-compensating function, for straight, THR solderable M12 socket contact inserts. Suitable for 3.1 mm ... 3.9 mm thick front plates.

## SACC-CI-M12FS-12CON-L90 SH - Contact carrier

1424199

<https://www.phoenixcontact.com/us/products/1424199>



## SACC-M12 NUT PRESS - Housing screw connection

1437889

<https://www.phoenixcontact.com/us/products/1437889>



Housing screw connection, Socket, M12, Front mounting, THR solder connection, Alternative product in accordance with RoHS II without Exemption 6c (Pb < 0.1 %) item no.: 1237410

---

## SACC-DSIV-M12-NUT-9 THR - Housing screw connection

1417989

<https://www.phoenixcontact.com/us/products/1417989>



Housing screw connection, Front mounting, THR solder connection, Alternative product in accordance with RoHS II without Exemption 6c (Pb < 0.1 %) item no.: 1239181

# SACC-CI-M12FS-12CON-L90 SH - Contact carrier

1424199

<https://www.phoenixcontact.com/us/products/1424199>



## SACC-BP-F-M12-THR PP - Housing screw connection

1027662

<https://www.phoenixcontact.com/us/products/1027662>



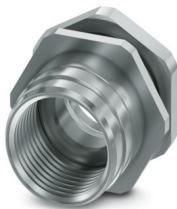
Housing screw connection, Socket, M12-Push-pull external locking, Rear mounting, M16, THR- und Wellenlötkontakte, Item is lead-free in accordance with RoHS II without Exemption 6c (Pb < 0.1 %)

---

## SACC-FP-F-M12-THR PP - Housing screw connection

1027678

<https://www.phoenixcontact.com/us/products/1027678>



Housing screw connection, Socket, M12-Push-pull external locking, Front mounting, M14 x 1, THR- und Wellenlötkontakte, Item is lead-free in accordance with RoHS II without Exemption 6c (Pb < 0.1 %)

---

Phoenix Contact 2024 © - all rights reserved  
<https://www.phoenixcontact.com>

Phoenix Contact USA  
586 Fulling Mill Road  
Middletown, PA 17057, United States  
(+717) 944-1300  
[info@phoenixcon.com](mailto:info@phoenixcon.com)