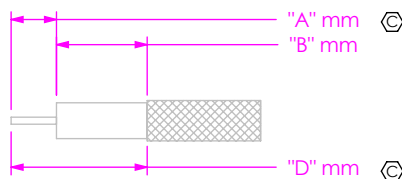


DO NOT  
SCALE FROM  
THIS PRINT

**FIG 2**  
CABLE STRIPPING DIMENSIONS  
PER CONFIGURATIONS  
(SEE NOTES 12,13,14)



**TABLE 1**

	CABLE CUT LENGTH	HI POT
STYLE	SUBTRACTOR	DCV
-01SPX	5.8 [0.23]	1000
-01RPX	3.1 [0.12]	1000
-SING	0.0 [0.00]	1000
XXXX	0.0 [0.00]	1000

**TABLE 2: FINAL ASSEMBLY LENGTH TOLERANCE**

LENGTH	TOLERANCE
0100-0200 [3.92-7.87]	+3.0 [.12]/-0.0 [.00]
0200-0500 [7.87-19.69]	+5.0 [.20]/-0.0 [.00]
0500-1100 [19.69-43.30]	+10.0 [.40]/-0.0 [.00]
>1100 [43.30]	± 1%

**NOTES:**

- ⑥ REPRESENTS A CRITICAL DIMENSION.
- CABLE CUT LENGTH:  
= (LENGTH: XXXX) - (SUBTRACTOR FOR END 1) - (SUBTRACTOR FOR END 2).  
(SEE TABLE 1 FOR SUBTRACTORS)
- ASSEMBLY TO BE 100% TESTED FOR OPENS & SHORTS.
- ASSEMBLY TO BE 100% HI-POT TESTED PER TABLE 1, THE TEST VOLTAGE FOR THE ASSEMBLY SHOULD BE SET TO THE END OPTION WITH THE LOWEST TEST VOLTAGE RATING.
- AFTER FINAL ELECTRICAL TESTS, LABEL EACH CABLE ASSEMBLY WITH 1 LABEL -ET.
- CRITICALS ON CONNECTOR PRINTS TO BE CHECKED IN PROCESS.
- FINISHED ASSEMBLIES TO BE PACKAGED PER PACKAGING STANDARD CO-RF-WI-3040-M. ASSEMBLIES WITH LOCKWASHERS, NUTS, AND GASKETS TO BE SHIPPED KITED AS ONE ASSEMBLY PER BAG, UNASSEMBLED.
- CABLE STOCKED IN INCHES, 1 INCH = 25.4 MILLIMETERS.
- CABLE LENGTHS LONGER THAN 1000 MILLIMETERS ARE NOT SUPPORTED BY S.I. TEST DATA.
- MINIMUM BEND RADIUS FOR RF402 = 6.35 [0.250],  
RR402 SUPPLIED AS STRAIGHT ASSEMBLIES ONLY, WITH MAX LENGTH = 585[23"].
- FOR SING ENDED OR STRIPPED AND TINNED ASSEMBLIES: MAKE A DOUBLE ENDED ASSEMBLY AT TWICE THE CABLE LENGTH AND TEST BEFORE CUTTING ASSEMBLY IN HALF.
- DIM "A" AND "B" HAVE A MINIMUM VALUE OF 0.0mm & A MAXIMUM VALUE OF 9.9mm.
- PRODUCTION OF STRIP AND TIN FOR CENTER DIELECTIC USE: A.
- PRODUCTION OF STRIP AND TIN FOR SHIELD USE: D=A+B.
- NOTE DELETED.
- FOR STRIPPED AND TINNED OPTION, ONLY THE CENTER CONDUCTOR IS TINNED.
- CONNECTORS TO BE ORIENTED ACCORDING TO CO-HD-WI-3048-M.

OPTION  
F: SEMI FLEXIBLE  
\*R: SEMI RIGID  
(SEE NOTE 10)

**CABLE CALLOUT**

402: CCA-402-X(RG-402 COAXIAL CABLE)

**END 1 CONNECTOR**

-01SP: SMA-P-C-XX-ST-CA9 (SEE SHEET 2)  
-01RP: SMA-P-C-XX-RA-CA9 (SEE SHEET 2)

**END 1 PLATING OPTION**

1: GOLD ALL COMPONENTS  
4: ALTERNATE GOLD /GOLD FLASH/ NICKEL  
6: ALTERNATE H GOLD / H GOLD / NICKEL  
7: ALTERNATE GOLD MEDIUM/ GOLD FLASH  
9: ALTERNATE HEAVY GOLD/MEDIUM GOLD  
P: HEAVY GOLD / PASSIVATED STAINLESS STEEL  
(SEE SHEET 2 FOR PLATING SPECIFICS)

OVERALL CABLE LENGTH  
MILLIMETERS OF CABLE (SEE NOTES 8 & 9)  
0100 MIN FOR RF402 (SEMI-FLEXIBLE)  
0100 MIN - 0305 MAX FOR RR402 (SEMI-RIGID)

**END 2 PLATING OPTION**

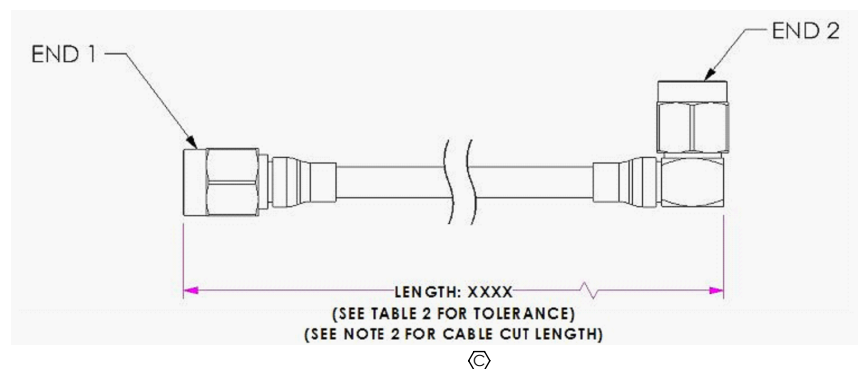
1: GOLD ALL COMPONENTS  
4: ALTERNATE GOLD /GOLD FLASH/ NICKEL  
6: ALTERNATE H GOLD / H GOLD / NICKEL  
7: ALTERNATE GOLD MEDIUM/ GOLD FLASH  
9: ALTERNATE HEAVY GOLD/MEDIUM GOLD  
P: HEAVY GOLD / PASSIVATED STAINLESS STEEL  
(SEE SHEET 2 FOR PLATING SPECIFICS)  
(LEAVE BLANK FOR -SING OR -XXXX  
END 2 PREPARATION)

**END 2 CONNECTOR OR PREPARATION**

-01SP: SMA-P-C-XX-ST-CA9 (SEE SHEET 2)  
-01RP: SMA-P-C-XX-RA-CA9 (SEE SHEET 2)  
-SING: SINGLE ENDED (ONE END ONLY, SEE NOTE 11)  
-XXXX : STRIPPED AND TINNED (THIS END ONLY-  
SEE NOTES 11-16 & SHEET 2, FIG 3)

(SEE FIG 2) "B" FORMAT: X.X mm  
(SEE FIG 2) "A" FORMAT: X.X mm

DO NOT LEAVE ANY SPACE BLANK,  
EACH MUST CONTAIN A  
NUMERIC CHARACTER 0 THRU 9.



**FIG 1**  
RF402-01SPX-01RPX-XXXX SHOWN

F:\DWG\MISC\MKTG\RX402-XXXXX-XXXX-XXXX-MKT.SLDDRW

UNLESS OTHERWISE SPECIFIED,  
DIMENSIONS ARE IN  
MILLIMETERS [INCHES].  
TOLERANCES ARE:  
DECIMALS ANGLES  
.X: ±0.3 [.01] 2°  
.XX: ±0.13 [.005]  
.XXX: ±0.051 [.0020]

**PROPRIETARY NOTE**  
THIS DOCUMENT CONTAINS CONFIDENTIAL AND  
PROPRIETARY INFORMATION AND ALL DESIGN,  
MANUFACTURING, REPRODUCTION, USE, PATENT RIGHTS  
AND SALES RIGHTS ARE EXPRESSLY RESERVED BY SAMTEC,  
INC. THIS DOCUMENT SHALL NOT BE DISCLOSED, IN WHOLE  
OR PART, TO ANY UNAUTHORIZED PERSON OR ENTITY NOR  
REPRODUCED, TRANSFERRED OR INCORPORATED IN ANY  
OTHER PROJECT IN ANY MANNER WITHOUT THE EXPRESS  
WRITTEN CONSENT OF SAMTEC, INC.

**MATERIAL:** DO NOT SCALE DRAWING  
SEE END 1 AND END 2 ASSEMBLY PRINTS

SHEET SCALE: 2:1

**samtec**

520 PARK EAST BLVD, NEW ALBANY, IN 47150  
PHONE: 812-944-6733 FAX: 812-948-5047  
e-Mail: info@SAMTEC.COM code 55322

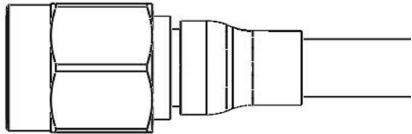
DESCRIPTION:  
RF402 OR RR402 CABLE ASSEMBLY

DWG. NO.  
**RX402-XXXXX-XXXX-XXXX**

BY: ALVIN W 01/11/2011 SHEET 1 OF 2

**-01SP**  
(STRAIGHT PLUG)

(USE DRAWING No. SMA-P-C-XX-ST-CA9  
FOR ASSEMBLY INSTRUCTIONS)

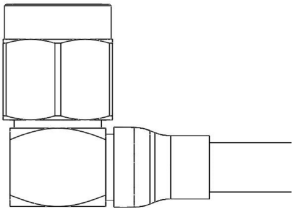


- PLATING OPTIONS
- 1: 30μ" MIN. GOLD CENTER CONTACT  
3μ" MIN. GOLD OUTER CONTACT  
3μ" MIN. GOLD REMAINING METAL PARTS  
(END CONNECTOR P/N: SMA-P-C-HF-ST-CA9)
  - 4: 10μ" MIN. GOLD CENTER CONTACT  
3μ" MIN. GOLD OUTER CONTACT  
100μ" MIN. NICKEL REMAINING METAL PARTS  
(END CONNECTOR P/N: SMA-P-C-GN-ST-CA9)
  - 7: 10μ" MIN. GOLD CENTER CONTACT  
3μ" MIN. GOLD OUTER CONTACT  
3μ" MIN. GOLD REMAINING METAL PARTS  
(END CONNECTOR P/N: SMA-P-C-GF-ST-CA9)

NOTE: ALL CRITICAL DIMENSIONS ON SMA-P-C-XX-ST-CA9  
THAT APPLY MUST BE VERIFIED.

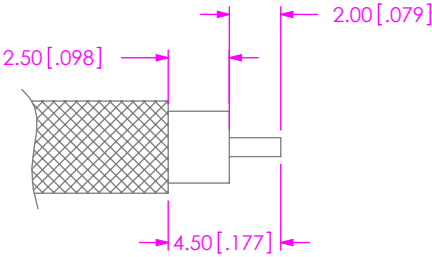
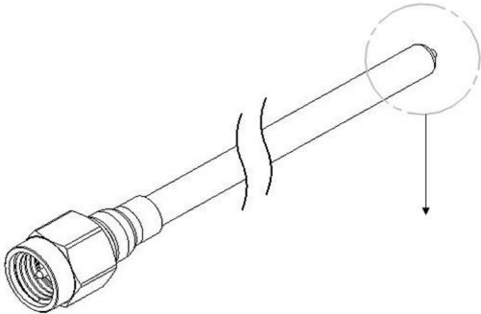
**-01RP**  
(RIGHT ANGLE PLUG)

(USE DRAWING No. SMA-P-C-XX-RA-CA9  
FOR ASSEMBLY INSTRUCTIONS)



- PLATING OPTIONS
- 1: 30μ" MIN. GOLD CENTER CONTACT  
3μ" MIN. GOLD OUTER CONTACT  
3μ" MIN. GOLD REMAINING METAL PARTS  
(END CONNECTOR P/N: SMA-P-C-HF-RA-CA9)
  - 4: 10μ" MIN. GOLD CENTER CONTACT  
3μ" MIN. GOLD OUTER CONTACT  
100μ" MIN. NICKEL REMAINING METAL PARTS  
(END CONNECTOR P/N: SMA-P-C-GN-RA-CA9)
  - 7: 10μ" MIN. GOLD CENTER CONTACT  
3μ" MIN. GOLD OUTER CONTACT  
3μ" MIN. GOLD REMAINING METAL PARTS  
(END CONNECTOR P/N: SMA-P-C-GF-RA-CA9)

NOTE: ALL CRITICAL DIMENSIONS ON SMA-P-C-XX-RA-CA9  
THAT APPLY MUST BE VERIFIED.



**FIG 3**  
RX402-01SPX-2025-XXXX SHOWN

F:\DWG\MISC\MKTG\RX402-XXXX-XXXX-XXXX -MKT.SLDDRW

**PROPRIETARY NOTE**  
THIS DOCUMENT CONTAINS CONFIDENTIAL AND PROPRIETARY INFORMATION AND ALL DESIGN, MANUFACTURING, REPRODUCTION, USE, PATENT RIGHTS AND SALES RIGHTS ARE EXPRESSLY RESERVED BY SAMTEC, INC. THIS DOCUMENT SHALL NOT BE DISCLOSED, IN WHOLE OR PART, TO ANY UNAUTHORIZED PERSON OR ENTITY NOR REPRODUCED, TRANSFERRED OR INCORPORATED IN ANY OTHER PROJECT IN ANY MANNER WITHOUT THE EXPRESS WRITTEN CONSENT OF SAMTEC, INC.

DO NOT SCALE DRAWING

SHEET SCALE: 1:1



520 PARK EAST BLVD, NEW ALBANY, IN 47150  
PHONE: 812-944-6733 FAX: 812-948-5047  
e-Mail info@SAMTEC.com code 55322

DESCRIPTION:  
RF402 OR RR402 CABLE ASSEMBLY

DWG. NO.  
**RX402-XXXXX-XXXXX-XXXX**

BY: ALVIN W 01/11/2011 SHEET 2 OF 2