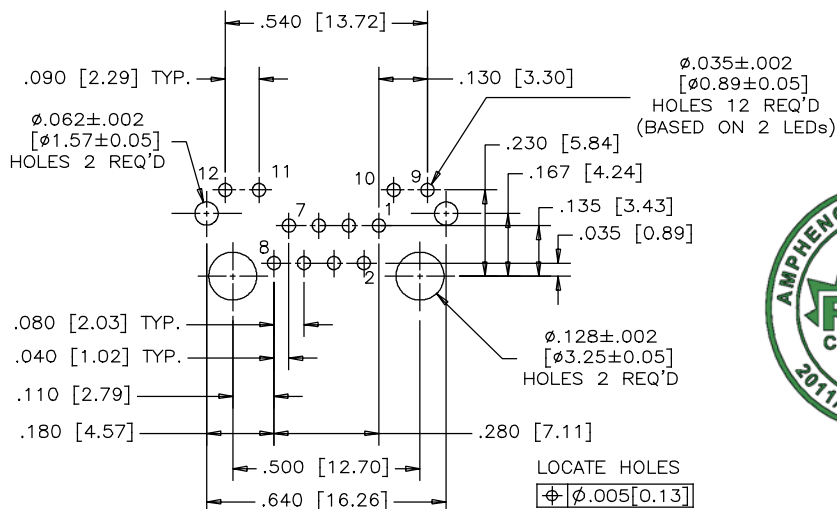


RECOMMENDED PANEL CUTOUT

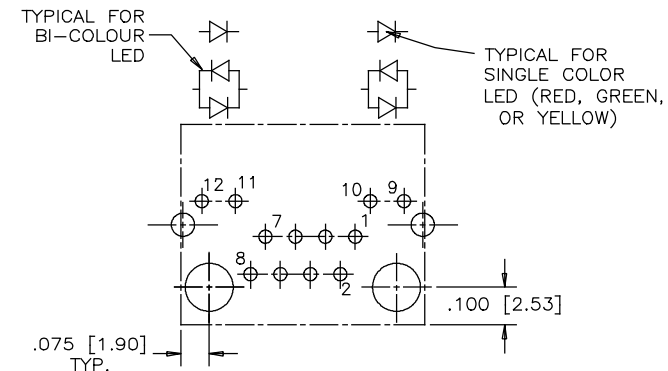
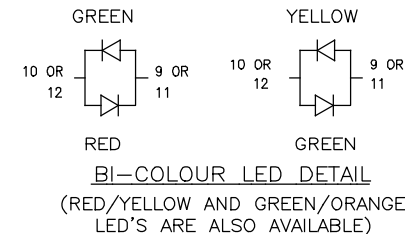


RECOMMENDED P.C.B. LAYOUT
(COMPONENT SIDE OF BOARD)

LOCATE HOLES
POSITION DIMENSIONS
ARE BASIC



REVISIONS				
REV	DESCRIPTION, ECN, EAR NO.	DATE	APP'D	
B	PROPOSAL	MAY 12/06	L.CHAN	
C	ADD GENERAL TOLERANCE	AUG 31/16	L.CHAN	
D	UPDATED SHIELD WITH NOTCH	APR 13/17	L.CHAN	



LED SCHEMATIC

MATERIALS:

PLASTIC HOUSING: HIGH TEMPERATURE THERMOPLASTIC
FLAMMABILITY RATING UL 94V-0 COLOR: BLACK.

CONTACTS: PHOSPHOR BRONZE
(FLAT) PLATING: 30 μ" [0.76 MICRONS]
MIN. GOLD ON MATING SURFACES.
50 μ" [1.27 MICRONS]
MIN. NICKEL UNDERPLATE
100 μ" [2.54 MICRONS]
MIN. MATTE TIN ON CONTACT TAILS.

SHIELD: STAINLESS STEEL WITH TIN DIPPED ON SOLDER TAILS.

RECOMMENDED SOLDERING TEMPERATURE:
WAVE SOLDERING TEMPERATURE AT 260°C MAXIMUM
FOR 5 SEC MAXIMUM.

AMPHENOL PART NUMBER: RJHSE-3P8X

REFER TO LED OPTIONS DRAWING
FOR ORDERING CODES

UNLESS SPECIFIED OTHERWISE		DRAWN PAUL W	DATE MAY 12/06	Amphenol Canada Corp. www.amphenolcanada.com TITLE SINGLE PORT MODULAR JACK, VERTICAL MOUNT, 8 POSITIONS, 8 CONTACTS, WITH LED OPTION, WITH FLANGE-RoHS COMPLIANT DWG. NO. P-RJHSE-3P8X REV D	
PRIMARY UNITS	INCHES	CHECKED CHIGOW	DATE MAY 12/06		
SECONDARY	MILLIMETERS	M.E. APP'D			
REFERENCE IN PARENTHESES		Q.A. APP'D			
GENERAL TOLERANCES		DWG APPR.			
1	DECIMAL PLACE	±.025			
2	DECIMAL PLACES	±.020			
3	DECIMAL PLACES	±.015			
ANGULAR DEGREES		±1.0°			
THIRD ANGLE PROJECTION		DO NOT SCALE DRAWING		CODE ID NO. 03554 DWG SIZE: C SCALE: 3/1 SHEET 1 OF 1	