

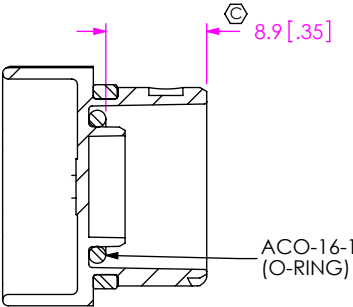
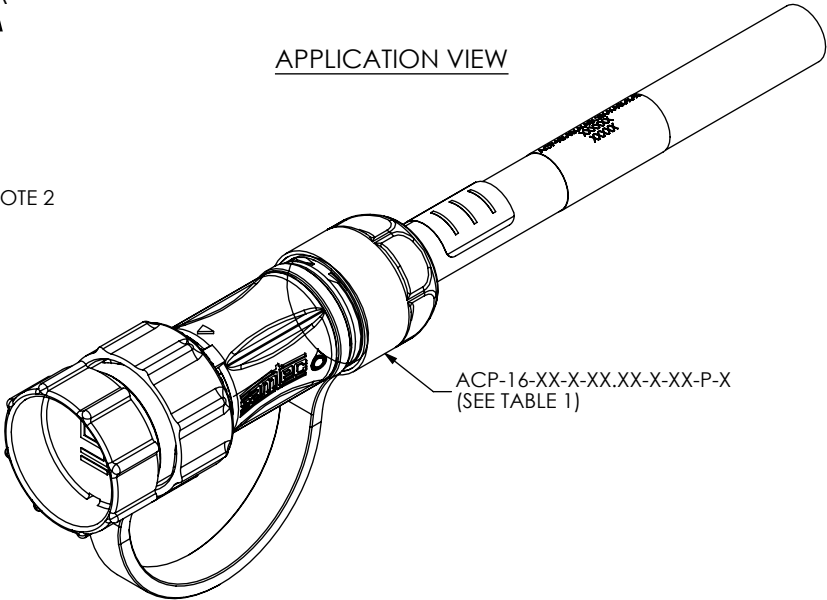
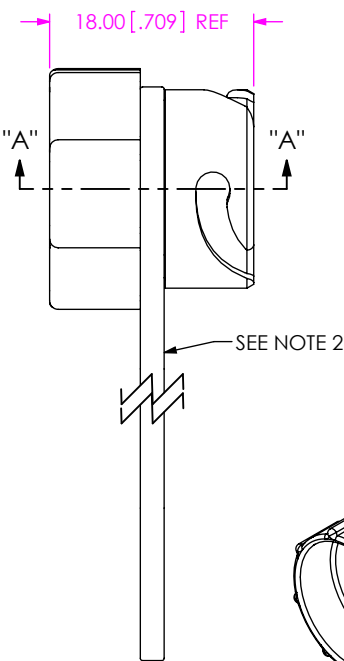
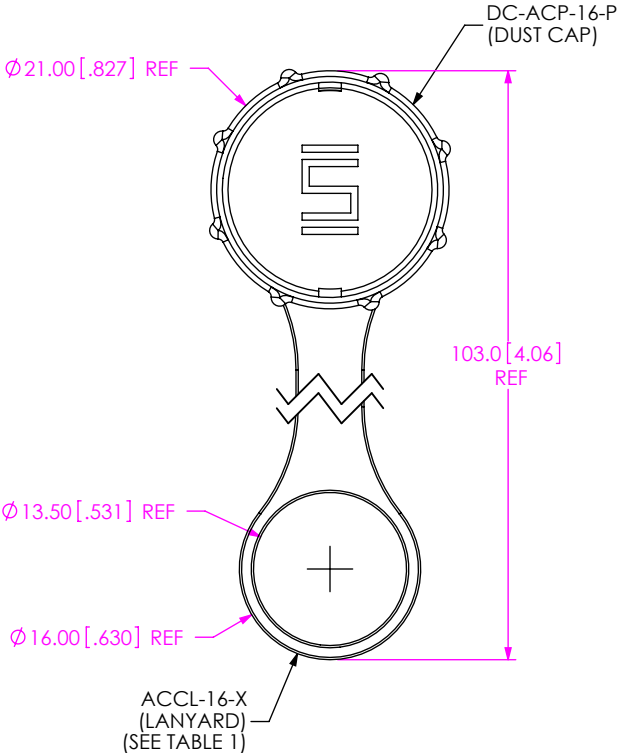
DO NOT  
SCALE FROM  
THIS PRINT

DESIGNED & DIMENSIONED  
IN MILLIMETERS[INCHES]

DCA-ACP-16-P-X

SIZE  
PLASTIC

KEYING FEATURE COLOR  
-1: ORANGE  
-2: GREEN  
-3: BLUE  
-4: YELLOW



SECTION "A"-"A"

TABLE 1			
CORRESPONDING CABLE PART NUMBER		KEYING FEATURE COLOR	ACCL-16-X
ACP-16-XX-X-XX.XX-X-XX-O-1	ACP-16-XX-X-XX.XX-X-XX-P-1	-1	ACCL-16-1
ACP-16-XX-X-XX.XX-X-XX-O-2	ACP-16-XX-X-XX.XX-X-XX-P-2	-2	ACCL-16-2
ACP-16-XX-X-XX.XX-X-XX-O-3	ACP-16-XX-X-XX.XX-X-XX-P-3	-3	ACCL-16-3
ACP-16-XX-X-XX.XX-X-XX-O-4	ACP-16-XX-X-XX.XX-X-XX-P-4	-4	ACCL-16-4

NOTES:

1. REPRESENTS A CRITICAL DIMENSION.
2. ACCL-16-X MUST SEAT IN GROOVE IN DC-ACP-16-P.

UNLESS OTHERWISE SPECIFIED,  
DIMENSIONS ARE IN MILLIMETERS.

TOLERANCES ARE:

DECIMALS	ANGLES
X.X: $\pm 0.3$ [.01]	2°
X.XX: $\pm 0.08$ [.003]	
X.XXX: $\pm 0.051$ [.0020]	

PROPRIETARY NOTE

THIS DOCUMENT CONTAINS INFORMATION  
CONFIDENTIAL AND PROPRIETARY TO  
SAMTEC, INC. AND SHALL NOT BE REPRODUCED  
OR TRANSFERRED TO OTHER DOCUMENTS OR  
DISCLOSED TO OTHERS OR USED FOR ANY  
PURPOSE OTHER THAN THAT WHICH IT WAS  
OBTAINED WITHOUT THE EXPRESSED WRITTEN  
CONSENT OF SAMTEC, INC.

MATERIAL:

DC-ACP-16-P: NYLON, COLOR: BLACK  
ACCL-16-X: SILICONE  
ACO-16-1: SILICONE

DO NOT SCALE DRAWING SHEET SCALE: 1:5:1



520 PARK EAST BLVD, NEW ALBANY, IN 47150  
PHONE: 812-944-6733 FAX: 812-948-5047  
e-Mail: info@SAMTEC.com code 55322

DESCRIPTION:  
M16 CABLE DUST CAP

DWG. NO.  
DCA-ACP-16-P-X

BY: D.SCHMELZ 04/26/2010 SHEET 1 OF 1