



Pushing Performance  
Since 1945

# SEK-19 SV HT MA LP ANG29 10P PLS4VC/RE



Image is for illustration purposes only. Please refer to product description.

|                    |   |
|--------------------|---|
| Part number        | 09 19 510 5323 740  |
| Specification      | SEK-19 SV HT MA LP ANG29 10P PLS4VC/RE  |
| HARTING eCatalogue | <a href="https://b2b.harting.com/09195105323740">https://b2b.harting.com/09195105323740</a> |

## Identification

|                            |                 |
|----------------------------|-----------------|
| Category                   | Connectors      |
| Series                     | SEK Low-profile |
| Element                    | Male connector  |
| Description of the contact | Angled          |

## Version

|                    |   |
|--------------------|---|
| Termination method | Reflow soldering termination (THR)          |
| Connection type    | PCB to cable<br>Motherboard to daughtercard |
| Number of contacts | 10  |
| Termination length | 2.9 mm                                      |
| Pack contents      | Tape & reel                                 |

## Technical characteristics

|                                    |   |
|------------------------------------|---|
| Contact rows                       | 2   |
| Contact spacing (termination side) | 2.54 mm   |
| Rated current                      | 1 A   |
| Insulation resistance              | $>10^9 \Omega$  |
| Contact resistance                 | $\leq 20 \text{ m}\Omega$                                       |
| Limiting temperature               | -55 ... +125 °C (during reflow soldering max. +240 °C for 60 s) |
| Insertion force                    | $\leq 20 \text{ N}$   |
| Withdrawal force                   | $\leq 20 \text{ N}$   |
| Performance level                  | NM 30 (S4)  |



**Pushing Performance**  
Since 1945

## Technical characteristics

|                           |                             |
|---------------------------|-----------------------------|
| Mating cycles             | ≥250                        |
| Test voltage $U_{r.m.s.}$ | 1 kV                        |
| Isolation group           | II ( $400 \leq CTI < 600$ ) |

## Material properties

|   |  |
|---|--|
| Material (insert)                         | Thermoplastic resin (PCT)                                      |
| Colour (insert)                           | Beige  |
| Material (contacts)                       | Copper alloy   |
| Surface (contacts)                        | Noble metal over Ni Mating side<br>Sn over Ni Termination side |
| Layer thickness                           | ≥0.76 µm   |
| Layer thickness                           | ≥30 µinch  |
| Material flammability class acc. to UL 94 | V-0  |
| RoHS                                      | compliant  |
| ELV status                                | compliant  |
| China RoHS                                | e  |
| REACH Annex XVII substances               | Not contained  |
| REACH ANNEX XIV substances                | Not contained  |
| REACH SVHC substances                     | Not contained  |
| California Proposition 65 substances      | Yes  |
| California Proposition 65 substances      | Lead<br>Nickel   |
| Fire protection on railway vehicles       | EN 45545-2 (2020-08)   |
| Requirement set with Hazard Levels        | R26  |

## Specifications and approvals

|                |  |
|----------------|--|
| Specifications | IEC 60603-13   |
| UL / CSA       | UL 1977 ECBT2.E102079<br>CSA-C22.2 No. 182.3 ECBT8.E102079 |

## Commercial data

|                                |          |
|--------------------------------|----------|
| Packaging size                 | 280      |
| Net weight                     | 3.75 g   |
| Country of origin              | Romania  |
| European customs tariff number | 85366990 |

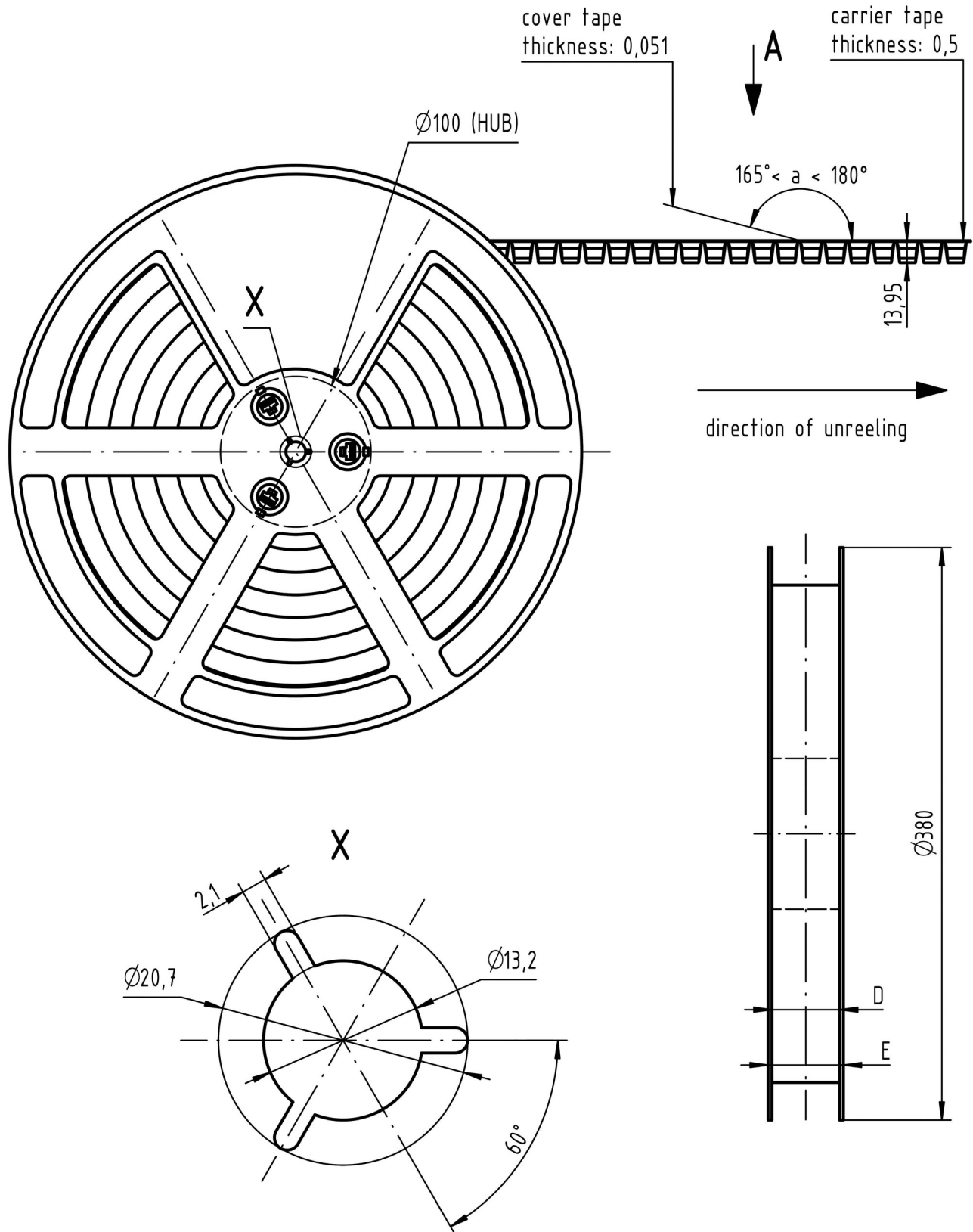
## Commercial data

|        |  |
|--------|--|
| GTIN   | 5713140036512                            |
| ETIM   | EC002637                                 |
| eCl@ss | 27460201 PCB connector (board connector) |

## Cross section of solder termination



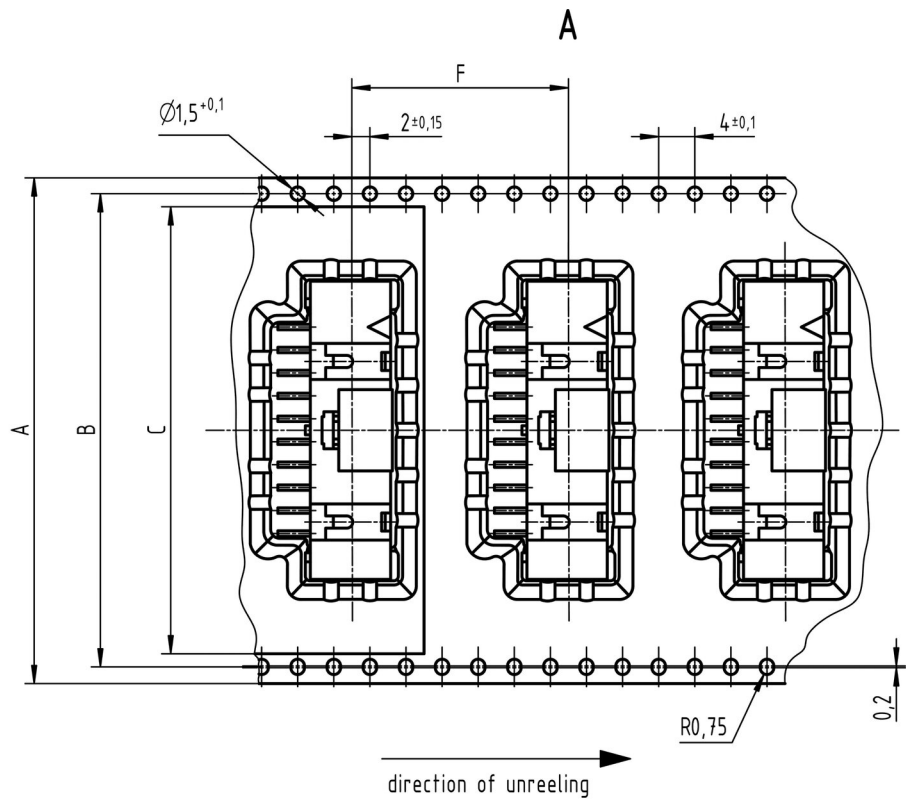
## Reel dimensions





Pushing Performance  
Since 1945

Tape layout & packaging



| contacts | A  | B    | C    | D  | E  | F  | -trailer-<br>number of empty<br>cavities | number of<br>connector<br>per reel | -leader-<br>number of empty<br>cavities |
|----------|----|------|------|----|----|----|--|------------------------------------|---|
| 40       | 72 | 68,4 | 65,5 | 73 | 78 | 24 | 14                                       | 280                                | 16                                      |
| 34       | 72 | 68,4 | 65,5 | 73 | 78 | 24 | 14                                       | 280                                | 16                                      |
| 30       | 56 | 52,4 | 49,5 | 57 | 62 | 24 | 14                                       | 280                                | 16                                      |
| 26       | 56 | 52,4 | 49,5 | 57 | 62 | 24 | 14                                       | 280                                | 16                                      |
| 20       | 56 | 52,4 | 49,5 | 57 | 62 | 24 | 14                                       | 280                                | 16                                      |
| 16       | 44 | 40,4 | 37,5 | 45 | 50 | 24 | 14                                       | 280                                | 16                                      |
| 14       | 44 | 40,4 | 37,5 | 45 | 50 | 24 | 14                                       | 280                                | 16                                      |
| 10       | 44 | 40,4 | 37,5 | 45 | 50 | 24 | 14                                       | 280                                | 16                                      |
| 6        | 32 | 28,4 | 25,5 | 33 | 38 | 24 | 14                                       | 280                                | 16                                      |