

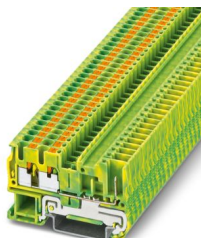
PT 2,5-TWIN/1P-PE - Ground terminal



3209659

<https://www.phoenixcontact.com/us/products/3209659>

Please be informed that the data shown in this PDF document is generated from our online catalog. Please find the complete data in the user documentation. Our general terms of use for downloads are valid.



Ground terminal, number of connections: 3, connection method: Push-in / plug connection, Rated cross section: 2.5 mm², cross section: 0.14 mm² - 4 mm², mounting type: NS 35/7,5, NS 35/15, color: green-yellow

Your advantages

- The Push-in connection terminal blocks are characterized by the system features of the CLIPLINE complete system and by easy and tool-free wiring of conductors with ferrules or solid conductors
- The compact design and front connection enable wiring in a confined space
- In addition to the testing option in the double function shaft, all terminal blocks provide an additional test pick-off
- Tested for railway applications

Commercial data

Item number	3209659
Packing unit	50 pc
Minimum order quantity	50 pc
Sales key	BE22
Product key	BE2242
Catalog page	Page 291 (C-1-2019)
GTIN	4046356333405
Weight per piece (including packing)	10.869 g
Weight per piece (excluding packing)	10.869 g
Customs tariff number	85369010
Country of origin	DE

PT 2,5-TWIN/1P-PE - Ground terminal



3209659

<https://www.phoenixcontact.com/us/products/3209659>

Technical data

Product properties

Product type	Ground terminal block
Area of application	Railway industry
	Machine building
	Plant engineering
Number of connections	3
Number of rows	1

Insulation characteristics

Overvoltage category	III
Degree of pollution	3

Electrical properties

Rated surge voltage	6 kV
Maximum power dissipation for nominal condition	0.77 W

Connection data

Grounding foot	Yes
Number of connections per level	3
Nominal cross section	2.5 mm ²
Note	Please observe the current carrying capacity of the DIN rails.
Stripping length	8 mm ... 10 mm
Internal cylindrical gage	A3
Connection in acc. with standard	IEC 61984
Conductor cross section rigid	0.14 mm ² ... 4 mm ²
Cross section AWG	26 ... 12 (converted acc. to IEC)
Conductor cross section flexible	0.14 mm ² ... 4 mm ²
Conductor cross section, flexible [AWG]	26 ... 12 (converted acc. to IEC)
Conductor cross-section flexible (ferrule without plastic sleeve)	0.14 mm ² ... 2.5 mm ²
Flexible conductor cross section (ferrule with plastic sleeve)	0.14 mm ² ... 2.5 mm ²
Maximum load current	with 4 mm ² conductor cross section, rigid
Nominal cross section	2.5 mm ²

Connection cross sections directly pluggable

Conductor cross section rigid	0.34 mm ² ... 4 mm ²
Conductor cross-section flexible (ferrule without plastic sleeve)	0.34 mm ² ... 2.5 mm ²
Flexible conductor cross section (ferrule with plastic sleeve)	0.34 mm ² ... 2.5 mm ²

Dimensions

Width	5.2 mm
End cover width	2.2 mm
Height	60.5 mm

PT 2,5-TWIN/1P-PE - Ground terminal



3209659

<https://www.phoenixcontact.com/us/products/3209659>

Depth	35.3 mm
Depth on NS 35/7,5	36.8 mm
Depth on NS 35/15	44.3 mm

Material specifications

Color	green-yellow
Flammability rating according to UL 94	V0
Insulating material group	I
Insulating material	PA
Static insulating material application in cold	-60 °C
Temperature index of insulation material (DIN EN 60216-1 (VDE 0304-21))	125 °C
Relative insulation material temperature index (Elec., UL 746 B)	130 °C
Fire protection for rail vehicles (DIN EN 45545-2) R22	HL 1 - HL 3
Fire protection for rail vehicles (DIN EN 45545-2) R23	HL 1 - HL 3
Fire protection for rail vehicles (DIN EN 45545-2) R24	HL 1 - HL 3
Fire protection for rail vehicles (DIN EN 45545-2) R26	HL 1 - HL 3
Calorimetric heat release NFPA 130 (ASTM E 1354)	27,5 MJ/kg
Surface flammability NFPA 130 (ASTM E 162)	passed
Specific optical density of smoke NFPA 130 (ASTM E 662)	passed
Smoke gas toxicity NFPA 130 (SMP 800C)	passed

Mechanical properties

Mechanical data

Open side panel	Yes
-----------------	-----

Environmental and real-life conditions

Oscillation/broadband noise

Specification	DIN EN 50155 (VDE 0115-200):2008-03
Spectrum	Service life test category 1, class B, body mounted
Frequency	$f_1 = 5 \text{ Hz}$ to $f_2 = 150 \text{ Hz}$
ASD level	$0.964 \text{ (m/s}^2\text{)}^2\text{/Hz}$
Acceleration	0.58g
Test duration per axis	5 h
Test directions	X-, Y- and Z-axis
Result	Test passed

Shocks

Specification	DIN EN 50155 (VDE 0115-200):2008-03
Pulse shape	Half-sine
Acceleration	5g
Shock duration	30 ms
Number of shocks per direction	3
Test directions	X-, Y- and Z-axis (pos. and neg.)

PT 2,5-TWIN/1P-PE - Ground terminal



3209659

<https://www.phoenixcontact.com/us/products/3209659>

Result	Test passed
--------	-------------

Ambient conditions

Ambient temperature (operation)	-60 °C (max. operating temperature see derating curve)
Ambient temperature (storage/transport)	-25 °C ... 60 °C (for a short time, no longer than 24 h, -60°C to +70°C)
Ambient temperature (assembly)	-5 °C ... 70 °C
Ambient temperature (actuation)	-5 °C ... 70 °C
Permissible humidity (operation)	20 % ... 90 %
Permissible humidity (storage/transport)	30 % ... 70 %

Standards and regulations

Connection in acc. with standard	IEC 61984
----------------------------------	-----------

Mounting

Mounting type	NS 35/7,5
	NS 35/15

PT 2,5-TWIN/1P-PE - Ground terminal

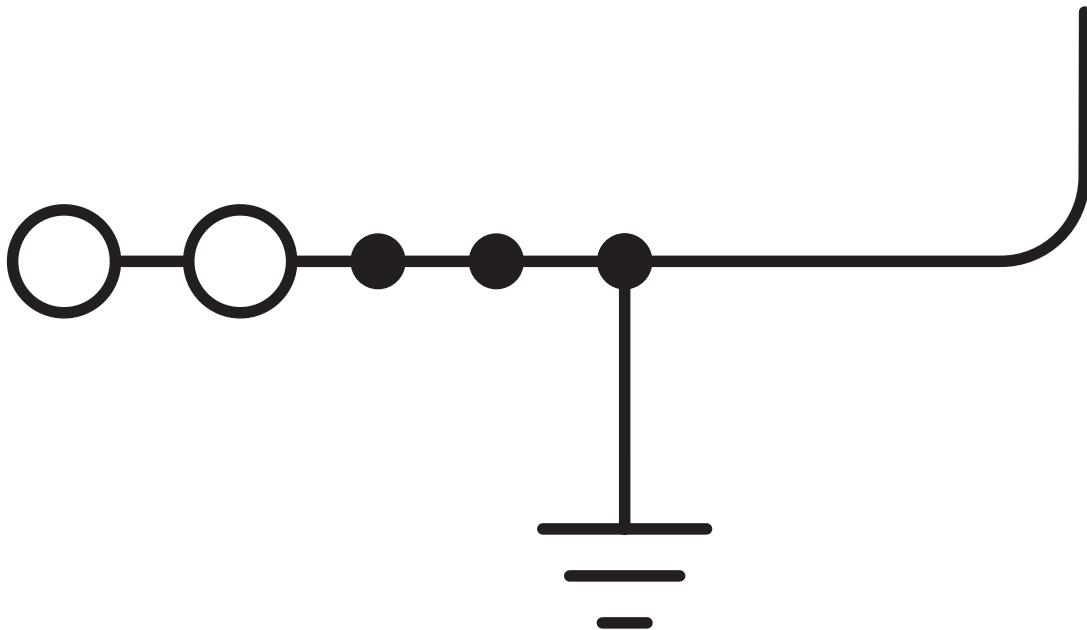


3209659

<https://www.phoenixcontact.com/us/products/3209659>

Drawings

Circuit diagram



PT 2,5-TWIN/1P-PE - Ground terminal



3209659

<https://www.phoenixcontact.com/us/products/3209659>

Approvals

To download certificates, visit the product detail page: <https://www.phoenixcontact.com/us/products/3209659>

DNV
Approval ID: TAE00003JE

	CSA Approval ID: 2030668				
		Nominal voltage U _N	Nominal current I _N	Cross section AWG	Cross section mm ²
		-	-	26 - 12	-

EAC
Approval ID: RU C-DE.BL08.B.00644

cULus Recognized
Approval ID: E60425

LR
Approval ID: LR2371832TA

ClassNK
Approval ID: 14ME0912

BV
Approval ID: 25278/C1 BV

LR
Approval ID: 14/20056

cULus Recognized
Approval ID: E60425

PT 2,5-TWIN/1P-PE - Ground terminal



3209659

<https://www.phoenixcontact.com/us/products/3209659>

Classifications

ECLASS

ECLASS-11.0	27141141
ECLASS-13.0	27250103

ETIM

ETIM 9.0	EC000901
----------	----------

UNSPSC

UNSPSC 21.0	39121400
-------------	----------

PT 2,5-TWIN/1P-PE - Ground terminal



3209659

<https://www.phoenixcontact.com/us/products/3209659>

Environmental product compliance

EU RoHS	
Fulfills EU RoHS substance requirements	Yes, No exemptions
China RoHS	
Environment friendly use period (EFUP)	EFUP-E
	No hazardous substances above the limits
EU REACH SVHC	
REACH candidate substance (CAS No.)	No substance above 0.1 wt%
EF3.0 Climate Change	
CO2e kg	0.07 kg CO2e

PT 2,5-TWIN/1P-PE - Ground terminal



3209659

<https://www.phoenixcontact.com/us/products/3209659>

Accessories



Note: Applying some accessories below might limit this product.

FBS 2-5 - Plug-in bridge

3030161

<https://www.phoenixcontact.com/us/products/3030161>



Plug-in bridge, pitch: 5.2 mm, number of positions: 2, length: 23 mm, color: red



Max. current carrying capacity: 24 A

FBS 3-5 - Plug-in bridge

3030174

<https://www.phoenixcontact.com/us/products/3030174>



Plug-in bridge, pitch: 5.2 mm, number of positions: 3, length: 23 mm, color: red



Max. current carrying capacity: 24 A

PT 2,5-TWIN/1P-PE - Ground terminal

3209659

<https://www.phoenixcontact.com/us/products/3209659>



FBS 4-5 - Plug-in bridge

3030187

<https://www.phoenixcontact.com/us/products/3030187>



Plug-in bridge, pitch: 5.2 mm, number of positions: 4, length: 23 mm, color: red

 Max. current carrying capacity: 24 A

FBS 5-5 - Plug-in bridge

3030190

<https://www.phoenixcontact.com/us/products/3030190>



Plug-in bridge, pitch: 5.2 mm, number of positions: 5, length: 23 mm, color: red

 Max. current carrying capacity: 24 A

PT 2,5-TWIN/1P-PE - Ground terminal

3209659

<https://www.phoenixcontact.com/us/products/3209659>




FBS 10-5 - Plug-in bridge

3030213

<https://www.phoenixcontact.com/us/products/3030213>



Plug-in bridge, pitch: 5.2 mm, number of positions: 10, length: 23 mm, color: red

 Max. current carrying capacity: 24 A

FBS 20-5 - Plug-in bridge

3030226

<https://www.phoenixcontact.com/us/products/3030226>



Plug-in bridge, pitch: 5.2 mm, number of positions: 20, color: red

 Max. current carrying capacity: 24 A

PT 2,5-TWIN/1P-PE - Ground terminal

3209659

<https://www.phoenixcontact.com/us/products/3209659>



FBS 50-5 - Plug-in bridge

3038930

<https://www.phoenixcontact.com/us/products/3038930>



Plug-in bridge, pitch: 5.2 mm, number of positions: 50, color: red

 Max. current carrying capacity: 24 A

FBSR 2-5 - Plug-in bridge

3033702

<https://www.phoenixcontact.com/us/products/3033702>



Plug-in bridge, pitch: 5.2 mm, number of positions: 2, color: red

PT 2,5-TWIN/1P-PE - Ground terminal

3209659

<https://www.phoenixcontact.com/us/products/3209659>



FBSR 3-5 - Plug-in bridge

3001591

<https://www.phoenixcontact.com/us/products/3001591>



Plug-in bridge, pitch: 5.2 mm, number of positions: 3, color: red

FBSR 4-5 - Plug-in bridge

3001592

<https://www.phoenixcontact.com/us/products/3001592>



Plug-in bridge, pitch: 5.2 mm, number of positions: 4, color: red

PT 2,5-TWIN/1P-PE - Ground terminal

3209659

<https://www.phoenixcontact.com/us/products/3209659>



FBSR 5-5 - Plug-in bridge

3001593

<https://www.phoenixcontact.com/us/products/3001593>

Plug-in bridge, pitch: 5.2 mm, number of positions: 5, color: red



FBSR 10-5 - Plug-in bridge

3033710

<https://www.phoenixcontact.com/us/products/3033710>

Plug-in bridge, pitch: 5.2 mm, number of positions: 10, color: red



PT 2,5-TWIN/1P-PE - Ground terminal

3209659

<https://www.phoenixcontact.com/us/products/3209659>



FBS 2-5 BU - Plug-in bridge

3036877

<https://www.phoenixcontact.com/us/products/3036877>



Plug-in bridge, pitch: 5.2 mm, number of positions: 2, color: blue

FBS 3-5 BU - Plug-in bridge

3036880

<https://www.phoenixcontact.com/us/products/3036880>



Plug-in bridge, pitch: 5.2 mm, number of positions: 3, color: blue

PT 2,5-TWIN/1P-PE - Ground terminal

3209659

<https://www.phoenixcontact.com/us/products/3209659>



FBS 4-5 BU - Plug-in bridge

3036893

<https://www.phoenixcontact.com/us/products/3036893>



Plug-in bridge, pitch: 5.2 mm, number of positions: 4, color: blue

FBS 5-5 BU - Plug-in bridge

3036903

<https://www.phoenixcontact.com/us/products/3036903>



Plug-in bridge, pitch: 5.2 mm, number of positions: 5, color: blue

PT 2,5-TWIN/1P-PE - Ground terminal

3209659

<https://www.phoenixcontact.com/us/products/3209659>



FBS 10-5 BU - Plug-in bridge

3036916

<https://www.phoenixcontact.com/us/products/3036916>



Plug-in bridge, pitch: 5.2 mm, number of positions: 10, color: blue

FBS 20-5 BU - Plug-in bridge

3036929

<https://www.phoenixcontact.com/us/products/3036929>



Plug-in bridge, pitch: 5.2 mm, number of positions: 20, color: blue

PT 2,5-TWIN/1P-PE - Ground terminal

3209659

<https://www.phoenixcontact.com/us/products/3209659>



FBS 50-5 BU - Plug-in bridge

3032114

<https://www.phoenixcontact.com/us/products/3032114>



Plug-in bridge, pitch: 5.2 mm, number of positions: 50, color: blue

ATP-ST-TWIN - Partition plate

3030789

<https://www.phoenixcontact.com/us/products/3030789>

Partition plate, depth: 39 mm, width: 2 mm, height: 75.2 mm, color: gray



PT 2,5-TWIN/1P-PE - Ground terminal

3209659

<https://www.phoenixcontact.com/us/products/3209659>



D-ST 2,5-TWIN - End cover

3030488

<https://www.phoenixcontact.com/us/products/3030488>

End cover, depth: 29 mm, width: 2.2 mm, height: 60.5 mm, color: gray



STP 5-2-ZB - Marker carriers

3037643

<https://www.phoenixcontact.com/us/products/3037643>

Marker carriers, snaps into ST 2,5 spring-cage terminal blocks, can be marked with UC-TM 5, UC-TMF 5, UCT-TM 5, UCT-TMF 5, ZB 5, or ZBF 5, gray, unlabeled, mounting type: snapped



PT 2,5-TWIN/1P-PE - Ground terminal

3209659

<https://www.phoenixcontact.com/us/products/3209659>



GBS 5-25X12 - Group marker label for terminal marking

0810588

<https://www.phoenixcontact.com/us/products/0810588>



Group marker label, snaps onto terminal center for screw, spring-cage and quick connection terminal blocks, labeled with a 25 x 12 mm label or manually with the B-STIFT, in the foot part with ZB 5

GBS-ZB/26X6 - Group marker label for terminal marking

0809298

<https://www.phoenixcontact.com/us/products/0809298>



Group marking label, snaps onto terminal center for screw, spring-cage and quick connection terminal blocks, labeled with ESL 26x6 mm or EST 25x6 mm, in the foot part with Zack marker strip, length: 29 mm

PT 2,5-TWIN/1P-PE - Ground terminal

3209659

<https://www.phoenixcontact.com/us/products/3209659>



ST 2,5-TWIN/1P-F - Screw flange

3209840

<https://www.phoenixcontact.com/us/products/3209840>



Screw flange, for screwing COMBI plugs, with the same structure and pitch as the relevant COMBI terminal blocks

ST 2,5-TWIN/1P-FS - Latching flange

3061389

<https://www.phoenixcontact.com/us/products/3061389>



Latching flange, mounting type: NS 35/7,5, NS 35/15, color: gray

PT 2,5-TWIN/1P-PE - Ground terminal

3209659

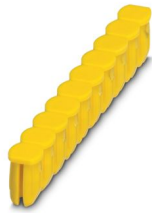
<https://www.phoenixcontact.com/us/products/3209659>



CEC 2,5 - Filler plug

3062757

<https://www.phoenixcontact.com/us/products/3062757>



Cover for conductor shaft, 10-pos., for spring cage terminal blocks (ST) and terminal blocks with push-in technology (PT) with a width of 5.2 mm

WS PT 2,5 - Warning label

1029026

<https://www.phoenixcontact.com/us/products/1029026>



Warning label, yellow/black, labeled: Lightning flash, mounting type: plug in, for terminal block width: 5.2 mm

PT 2,5-TWIN/1P-PE - Ground terminal

3209659

<https://www.phoenixcontact.com/us/products/3209659>



WS-DIO PT 2,5 - Warning label

1029037

<https://www.phoenixcontact.com/us/products/1029037>



Warning label, yellow/black, labeled: Diode, mounting type: plug in, for terminal block width: 5.2 mm

PC - Coding star

3040588

<https://www.phoenixcontact.com/us/products/3040588>



Coding star, 4-section, depth: 6 mm, width: 3 mm, height: 3 mm, color: red

PT 2,5-TWIN/1P-PE - Ground terminal

3209659

<https://www.phoenixcontact.com/us/products/3209659>



LPO 2,5/E - Pick-off plug

3270516

<https://www.phoenixcontact.com/us/products/3270516>



Pick-off plug, nom. voltage: 800 V, nominal current: 24 A, number of positions: 1, connection method: Push-in connection, Rated cross section: 2.5 mm², cross section: 0.14 mm²- 4 mm², color: gray

LPO 2,5 - Pick-off plug

3270517

<https://www.phoenixcontact.com/us/products/3270517>



Pick-off plug, nom. voltage: 800 V, nominal current: 24 A, number of positions: 1, connection method: Push-in connection, Rated cross section: 2.5 mm², cross section: 0.14 mm²- 4 mm², color: gray

PT 2,5-TWIN/1P-PE - Ground terminal

3209659

<https://www.phoenixcontact.com/us/products/3209659>



LPS-5/E - Service connector

3270520

<https://www.phoenixcontact.com/us/products/3270520>



Service connector, nom. voltage: 800 V, nominal current: 24 A, number of positions: 1, connection method: Push-in connection, Rated cross section: 2.5 mm², cross section: 0.14 mm²- 4 mm², color: red

LPS-5 - Service connector

3270521

<https://www.phoenixcontact.com/us/products/3270521>



Service connector, nom. voltage: 800 V, nominal current: 24 A, number of positions: 1, connection method: Push-in connection, Rated cross section: 2.5 mm², cross section: 0.14 mm²- 4 mm², color: red

PT 2,5-TWIN/1P-PE - Ground terminal

3209659

<https://www.phoenixcontact.com/us/products/3209659>



NS 35/ 7,5 PERF 2000MM - DIN rail perforated

0801733

<https://www.phoenixcontact.com/us/products/0801733>



DIN rail perforated, Pack of 25 (50 m), acc. to EN 60715, material: Steel, galvanized, passivated with a thick layer, Standard profile, color: silver

NS 35/ 7,5 UNPERF 2000MM - DIN rail, unperforated

0801681

<https://www.phoenixcontact.com/us/products/0801681>



DIN rail, unperforated, Pack of 25 (50 m), acc. to EN 60715, material: Steel, galvanized, passivated with a thick layer, Standard profile, color: silver

PT 2,5-TWIN/1P-PE - Ground terminal

3209659

<https://www.phoenixcontact.com/us/products/3209659>



NS 35/ 7,5 WH PERF 2000MM - DIN rail perforated

1204119

<https://www.phoenixcontact.com/us/products/1204119>



DIN rail perforated, Pack of 25 (50 m), acc. to EN 60715, material: Steel, Galvanized, white passivated, Standard profile, color: silver

NS 35/ 7,5 WH UNPERF 2000MM-VPE 10 - DIN rail, unperforated

1204122

<https://www.phoenixcontact.com/us/products/1204122>



DIN rail, unperforated, Pack of 10 (20 m), acc. to EN 60715, material: Steel, Galvanized, white passivated, Standard profile, color: silver

PT 2,5-TWIN/1P-PE - Ground terminal

3209659

<https://www.phoenixcontact.com/us/products/3209659>



NS 35/ 7,5 AL UNPERF 2000MM - DIN rail, unperforated

0801704

<https://www.phoenixcontact.com/us/products/0801704>



DIN rail, unperforated, Pack of 25 (50 m), acc. to EN 60715, material: Aluminum, uncoated, Standard profile, color: silver

NS 35/ 7,5 ZN PERF 2000MM - DIN rail perforated

1206421

<https://www.phoenixcontact.com/us/products/1206421>



DIN rail perforated, Pack of 25 (50 m), acc. to EN 60715, material: Steel, galvanized, Standard profile, color: silver

PT 2,5-TWIN/1P-PE - Ground terminal

3209659

<https://www.phoenixcontact.com/us/products/3209659>



NS 35/ 7,5 ZN UNPERF 2000MM - DIN rail, unperforated

1206434

<https://www.phoenixcontact.com/us/products/1206434>



DIN rail, unperforated, Pack of 25 (50 m), acc. to EN 60715, material: Steel, galvanized, Standard profile, color: silver

NS 35/ 7,5 CU UNPERF 2000MM-VPE 10 - DIN rail, unperforated

0801762

<https://www.phoenixcontact.com/us/products/0801762>



DIN rail, unperforated, Pack of 10 (20 m), acc. to EN 60715, material: Copper, uncoated, Standard profile, color: copper-colored

PT 2,5-TWIN/1P-PE - Ground terminal

3209659

<https://www.phoenixcontact.com/us/products/3209659>



NS 35/ 7,5 CAP - End cap

1206560

<https://www.phoenixcontact.com/us/products/1206560>

DIN rail end piece, for DIN rail NS 35/7.5



NS 35/15 PERF 2000MM - DIN rail perforated

1201730

<https://www.phoenixcontact.com/us/products/1201730>



DIN rail perforated, Pack of 25 (50 m), similar to EN 60715, material: Steel, galvanized, passivated with a thick layer, Standard profile, color: silver

PT 2,5-TWIN/1P-PE - Ground terminal

3209659

<https://www.phoenixcontact.com/us/products/3209659>



NS 35/15 UNPERF 2000MM - DIN rail, unperforated

1201714

<https://www.phoenixcontact.com/us/products/1201714>



DIN rail, unperforated, Pack of 25 (50 m), similar to EN 60715, material: Steel, galvanized, passivated with a thick layer, Standard profile, color: silver

NS 35/15 WH PERF 2000MM - DIN rail perforated

0806602

<https://www.phoenixcontact.com/us/products/0806602>



DIN rail perforated, Pack of 25 (50 m), similar to EN 60715, material: Steel, Galvanized, white passivated, Standard profile, color: white

PT 2,5-TWIN/1P-PE - Ground terminal

3209659

<https://www.phoenixcontact.com/us/products/3209659>



NS 35/15 WH UNPERF 2000MM-VPE 10 - DIN rail, unperforated

1204135

<https://www.phoenixcontact.com/us/products/1204135>



DIN rail, unperforated, Pack of 10 (20 m), similar to EN 60715, material: Steel, Galvanized, white passivated, Standard profile, color: silver

NS 35/15 AL UNPERF 2000MM - DIN rail, unperforated

1201756

<https://www.phoenixcontact.com/us/products/1201756>



DIN rail, unperforated, similar to EN 60715, material: Aluminum, uncoated, Standard profile, color: silver

PT 2,5-TWIN/1P-PE - Ground terminal

3209659

<https://www.phoenixcontact.com/us/products/3209659>



NS 35/15 ZN PERF 2000MM - DIN rail perforated

1206599

<https://www.phoenixcontact.com/us/products/1206599>



DIN rail perforated, Pack of 25 (50 m), similar to EN 60715, material: Steel, galvanized, Standard profile, color: silver

NS 35/15 ZN UNPERF 2000MM - DIN rail, unperforated

1206586

<https://www.phoenixcontact.com/us/products/1206586>



DIN rail, unperforated, Pack of 25 (50 m), similar to EN 60715, material: Steel, galvanized, Standard profile, color: silver

PT 2,5-TWIN/1P-PE - Ground terminal

3209659

<https://www.phoenixcontact.com/us/products/3209659>



NS 35/15 CU UNPERF 2000MM-VPE 10 - DIN rail, unperforated

1201895

<https://www.phoenixcontact.com/us/products/1201895>



DIN rail, unperforated, Pack of 10 (20 m), similar to EN 60715, material: Copper, uncoated, Standard profile, color: copper-colored

NS 35/15 CAP - End cap

1206573

<https://www.phoenixcontact.com/us/products/1206573>



DIN rail end piece, for DIN rail NS 35/15

PT 2,5-TWIN/1P-PE - Ground terminal

3209659

<https://www.phoenixcontact.com/us/products/3209659>



NS 35/15-2,3 UNPERF 2000MM-VPE 10 - DIN rail, unperforated

1201798

<https://www.phoenixcontact.com/us/products/1201798>

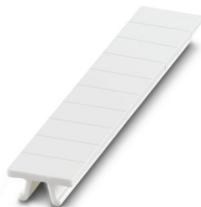


DIN rail, unperforated, Pack of 10 (20 m), acc. to EN 60715, material: Steel, galvanized, passivated with a thick layer, Standard profile 2.3 mm, color: silver

ZB 5 :UNBEDRUCKT - Zack marker strip

1050004

<https://www.phoenixcontact.com/us/products/1050004>



Zack marker strip, Strip, white, unlabeled, can be labeled with: PLOTMARK, CMS-P1-PLOTTER, mounting type: snapped, for terminal block width: 5.2 mm, lettering field size: 5.1 x 10.5 mm, Number of individual labels: 10

PT 2,5-TWIN/1P-PE - Ground terminal

3209659

<https://www.phoenixcontact.com/us/products/3209659>



ZB 5 CUS - Zack marker strip

0824962

<https://www.phoenixcontact.com/us/products/0824962>



Zack marker strip, can be ordered: Strip, white, labeled according to customer specifications, mounting type: snap into tall marker groove, for terminal block width: 5.2 mm, lettering field size: 5.15 x 10.5 mm, Number of individual labels: 10

ZB 5,LGS:FORTL.ZAHLEN - Zack marker strip

1050017

<https://www.phoenixcontact.com/us/products/1050017>



Zack marker strip, Strip, white, labeled, printed horizontally: consecutive numbers 1 ... 10, 11 ... 20, etc. up to 491 ... 500, mounting type: snapped, for terminal block width: 5.2 mm, lettering field size: 5.15 x 10.5 mm, Number of individual labels: 10

PT 2,5-TWIN/1P-PE - Ground terminal

3209659

<https://www.phoenixcontact.com/us/products/3209659>



ZB 5,QR:FORTL.ZAHLEN - Zack marker strip

1050020

<https://www.phoenixcontact.com/us/products/1050020>



Zack marker strip, white, Printed vertically: consecutive numbers 1 ... 10, 11 ... 20, etc. up to 491 ... 500, mounting type: snapped, for terminal block width: 5.2 mm, lettering field size: 5.15 x 10.5 mm

ZB 5,LGS:GLEICHE ZAHLEN - Zack marker strip

1050033

<https://www.phoenixcontact.com/us/products/1050033>



Zack marker strip, Strip, white, labeled, can be labeled with: CMS-P1-PLOTTER, printed horizontally: Identical numbers 1 or 2, etc. up to 100, mounting type: snapped, for terminal block width: 5.2 mm, lettering field size: 5.15 x 10.5 mm, Number of individual labels: 10

PT 2,5-TWIN/1P-PE - Ground terminal

3209659

<https://www.phoenixcontact.com/us/products/3209659>



ZB 5,LGS:L1-N,PE - Zack marker strip

1050415

<https://www.phoenixcontact.com/us/products/1050415>



Zack marker strip, Strip, white, labeled, horizontal: L1, L2, L3, N, PE, L1, L2, L3, N, PE, mounting type: snapped, for terminal block width: 5.2 mm, lettering field size: 5.15 x 10.5 mm, Number of individual labels: 10

UC-TM 5 - Marker for terminal blocks

0818108

<https://www.phoenixcontact.com/us/products/0818108>



Marker for terminal blocks, Sheet, white, unlabeled, can be labeled with: BLUEMARK ID COLOR, BLUEMARK ID, BLUEMARK CLED, PLOTMARK, CMS-P1-PLOTTER, mounting type: snapped, for terminal block width: 5.2 mm, lettering field size: 4.6 x 10.5 mm, Number of individual labels: 96

PT 2,5-TWIN/1P-PE - Ground terminal

3209659

<https://www.phoenixcontact.com/us/products/3209659>



UC-TM 5 CUS - Marker for terminal blocks

0824581

<https://www.phoenixcontact.com/us/products/0824581>



Marker for terminal blocks, can be ordered: by sheet, white, labeled according to customer specifications, mounting type: snap into tall marker groove, for terminal block width: 5.2 mm, lettering field size: 10.5 x 4.6 mm, Number of individual labels: 96

UCT-TM 5 - Marker for terminal blocks

0828734

<https://www.phoenixcontact.com/us/products/0828734>



Marker for terminal blocks, Sheet, white, unlabeled, can be labeled with: TOPMARK NEO, TOPMARK LASER, BLUEMARK ID COLOR, BLUEMARK ID, BLUEMARK CLED, THERMOMARK PRIME, THERMOMARK CARD 2.0, THERMOMARK CARD, mounting type: snapped, for terminal block width: 5.2 mm, lettering field size: 4.6 x 10.5 mm, Number of individual labels: 72

PT 2,5-TWIN/1P-PE - Ground terminal

3209659

<https://www.phoenixcontact.com/us/products/3209659>



UCT-TM 5 CUS - Marker for terminal blocks

0829595

<https://www.phoenixcontact.com/us/products/0829595>



Marker for terminal blocks, can be ordered: by sheet, white, labeled according to customer specifications, mounting type: snap into tall marker groove, for terminal block width: 5.2 mm, lettering field size: 4.6 x 10.5 mm, Number of individual labels: 72

GBS 5-25X5 - Group marker label for terminal marking

0829126

<https://www.phoenixcontact.com/us/products/0829126>



Group marking label, can be snapped into terminal center for screw, spring-cage, push-in, and fast connection terminal blocks, can be labeled with a 24 x 4 mm label or manually using B-STIFT, in the foot part with ZB 5

PT 2,5-TWIN/1P-PE - Ground terminal

3209659

<https://www.phoenixcontact.com/us/products/3209659>



ZBF 5:UNBEDRUCKT - Zack Marker strip, flat

0808642

<https://www.phoenixcontact.com/us/products/0808642>



Zack Marker strip, flat, Strip, white, unlabeled, can be labeled with: PLOTMARK, CMS-P1-PLOTTER, mounting type: snapped, for terminal block width: 5 mm, lettering field size: 5.1 x 5.2 mm, Number of individual labels: 10

ZBF 5 CUS - Zack Marker strip, flat

0825025

<https://www.phoenixcontact.com/us/products/0825025>



Zack Marker strip, flat, can be ordered: Strip, white, labeled according to customer specifications, mounting type: snap into flat marker groove, for terminal block width: 5 mm, lettering field size: 5.15 x 5.15 mm, Number of individual labels: 10

PT 2,5-TWIN/1P-PE - Ground terminal

3209659

<https://www.phoenixcontact.com/us/products/3209659>



ZBF 5,LGS:FORTL.ZAHLEN - Zack Marker strip, flat

0808671

<https://www.phoenixcontact.com/us/products/0808671>



Zack Marker strip, flat, Strip, white, labeled, printed horizontally: consecutive numbers 1 ... 10, 11 ... 20, etc. up to 491 ... 500, mounting type: snapped, for terminal block width: 5 mm, lettering field size: 5.15 x 5.15 mm, Number of individual labels: 10

ZBF 5,QR:FORTL.ZAHLEN - Zack Marker strip, flat

0808697

<https://www.phoenixcontact.com/us/products/0808697>



Zack Marker strip, flat, Strip, white, labeled, Printed vertically: consecutive numbers 1 ... 10, 11 ... 20, etc. up to 91 ... 100, mounting type: snapped, for terminal block width: 5 mm, lettering field size: 5.15 x 5.15 mm, Number of individual labels: 10

PT 2,5-TWIN/1P-PE - Ground terminal

3209659

<https://www.phoenixcontact.com/us/products/3209659>



ZBF 5,LGS:GERADE ZAHLEN - Zack Marker strip, flat

0810821

<https://www.phoenixcontact.com/us/products/0810821>



Zack Marker strip, flat, Strip, white, labeled, printed horizontally: consecutive even numbers 2 ... 20, 22 ... 40, etc. up to 82 ... 100, mounting type: snapped, for terminal block width: 5 mm, lettering field size: 5.15 x 5.15 mm, Number of individual labels: 10

ZBF 5,LGS:UNGERADE ZAHLEN - Zack Marker strip, flat

0810863

<https://www.phoenixcontact.com/us/products/0810863>



Zack Marker strip, flat, Strip, white, labeled, printed horizontally: Odd numbers 1 - 19, 21 - 39, etc. up to 81 - 99, mounting type: snapped, for terminal block width: 5 mm, lettering field size: 5.15 x 5.15 mm, Number of individual labels: 10

PT 2,5-TWIN/1P-PE - Ground terminal

3209659

<https://www.phoenixcontact.com/us/products/3209659>



UC-TMF 5 - Marker for terminal blocks

0818153

<https://www.phoenixcontact.com/us/products/0818153>

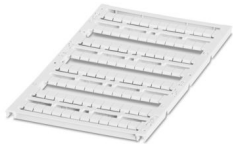


Marker for terminal blocks, Sheet, white, unlabeled, can be labeled with: BLUEMARK ID COLOR, BLUEMARK ID, BLUEMARK CLED, PLOTMARK, CMS-P1-PLOTTER, mounting type: snapped, for terminal block width: 5.2 mm, lettering field size: 4.6 x 5.1 mm, Number of individual labels: 96

UC-TMF 5 CUS - Marker for terminal blocks

0824638

<https://www.phoenixcontact.com/us/products/0824638>



Marker for terminal blocks, can be ordered: by sheet, white, labeled according to customer specifications, mounting type: snap into flat marker groove, for terminal block width: 5.2 mm, lettering field size: 4.6 x 5.1 mm, Number of individual labels: 96

PT 2,5-TWIN/1P-PE - Ground terminal

3209659

<https://www.phoenixcontact.com/us/products/3209659>



UCT-TMF 5 - Marker for terminal blocks

0828744

<https://www.phoenixcontact.com/us/products/0828744>



Marker for terminal blocks, Sheet, white, unlabeled, can be labeled with: TOPMARK NEO, TOPMARK LASER, BLUEMARK ID COLOR, BLUEMARK ID, BLUEMARK CLED, THERMOMARK PRIME, THERMOMARK CARD 2.0, THERMOMARK CARD, mounting type: snapped, for terminal block width: 5.2 mm, lettering field size: 4.4 x 4.7 mm, Number of individual labels: 72

UCT-TMF 5 CUS - Marker for terminal blocks

0829658

<https://www.phoenixcontact.com/us/products/0829658>



Marker for terminal blocks, can be ordered: by sheet, white, labeled according to customer specifications, mounting type: snap into flat marker groove, for terminal block width: 5.2 mm, lettering field size: 4.4 x 4.7 mm, Number of individual labels: 72

PT 2,5-TWIN/1P-PE - Ground terminal

3209659

<https://www.phoenixcontact.com/us/products/3209659>



MPS-MT - Test plug

0201744

<https://www.phoenixcontact.com/us/products/0201744>



Test plug, with solder connection up to 1 mm² conductor cross section, number of positions: 1, color: gray

MPS-IH WH - Insulating sleeve

0201663

<https://www.phoenixcontact.com/us/products/0201663>

Insulating sleeve, color: white



PT 2,5-TWIN/1P-PE - Ground terminal

3209659

<https://www.phoenixcontact.com/us/products/3209659>



MPS-IH RD - Insulating sleeve

0201676

<https://www.phoenixcontact.com/us/products/0201676>

Insulating sleeve, color: red

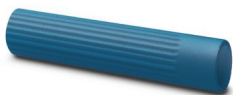


MPS-IH BU - Insulating sleeve

0201689

<https://www.phoenixcontact.com/us/products/0201689>

Insulating sleeve, color: blue



PT 2,5-TWIN/1P-PE - Ground terminal

3209659

<https://www.phoenixcontact.com/us/products/3209659>



MPS-IH YE - Insulating sleeve

0201692

<https://www.phoenixcontact.com/us/products/0201692>

Insulating sleeve, color: yellow



MPS-IH GN - Insulating sleeve

0201702

<https://www.phoenixcontact.com/us/products/0201702>

Insulating sleeve, color: green



PT 2,5-TWIN/1P-PE - Ground terminal

3209659

<https://www.phoenixcontact.com/us/products/3209659>



MPS-IH GY - Insulating sleeve

0201728

<https://www.phoenixcontact.com/us/products/0201728>

Insulating sleeve, color: gray



MPS-IH BK - Insulating sleeve

0201731

<https://www.phoenixcontact.com/us/products/0201731>

Insulating sleeve, color: black



PT 2,5-TWIN/1P-PE - Ground terminal

3209659

<https://www.phoenixcontact.com/us/products/3209659>



ISH 2,5/0,2 - Insulating sleeve

3002843

<https://www.phoenixcontact.com/us/products/3002843>

Insulating sleeve, color: white



ISH 2,5/0,5 - Insulating sleeve

3002856

<https://www.phoenixcontact.com/us/products/3002856>

Insulating sleeve, color: gray



PT 2,5-TWIN/1P-PE - Ground terminal

3209659

<https://www.phoenixcontact.com/us/products/3209659>



ISH 2,5/1,0 - Insulating sleeve

3002869

<https://www.phoenixcontact.com/us/products/3002869>



Insulating sleeve, color: black

PAI-4-FIX-5/6 BU - Test adapter

3035975

<https://www.phoenixcontact.com/us/products/3035975>



4 mm test adapter, for terminal blocks with 5.2 mm and 6.2 mm pitch

PT 2,5-TWIN/1P-PE - Ground terminal

3209659

<https://www.phoenixcontact.com/us/products/3209659>



PAI-4-FIX-5/6 OG - Test adapter

3035974

<https://www.phoenixcontact.com/us/products/3035974>



4 mm test adapter, for terminal blocks with 5.2 mm and 6.2 mm pitch

PAI-4-FIX-5/6 YE - Test adapter

3035977

<https://www.phoenixcontact.com/us/products/3035977>



4 mm test adapter, for terminal blocks with 5.2 mm and 6.2 mm pitch

PT 2,5-TWIN/1P-PE - Ground terminal

3209659

<https://www.phoenixcontact.com/us/products/3209659>



PAI-4-FIX-5/6 RD - Test adapter

3035976

<https://www.phoenixcontact.com/us/products/3035976>



4 mm test adapter, for terminal blocks with 5.2 mm and 6.2 mm pitch

PAI-4-FIX-5/6 GN - Test adapter

3035978

<https://www.phoenixcontact.com/us/products/3035978>



4 mm test adapter, for terminal blocks with 5.2 mm and 6.2 mm pitch

PT 2,5-TWIN/1P-PE - Ground terminal

3209659

<https://www.phoenixcontact.com/us/products/3209659>



PAI-4-FIX-5/6 BK - Test adapter

3035980

<https://www.phoenixcontact.com/us/products/3035980>



4 mm test adapter, for terminal blocks with 5.2 mm and 6.2 mm pitch

PAI-4-FIX-5/6 GY - Test adapter

3035982

<https://www.phoenixcontact.com/us/products/3035982>



4 mm test adapter, for terminal blocks with 5.2 mm and 6.2 mm pitch

PT 2,5-TWIN/1P-PE - Ground terminal

3209659

<https://www.phoenixcontact.com/us/products/3209659>



PAI-4-FIX-5/6 VT - Test adapter

3035979

<https://www.phoenixcontact.com/us/products/3035979>



4 mm test adapter, for terminal blocks with 5.2 mm and 6.2 mm pitch

PAI-4-FIX-5/6 BN - Test adapter

3035981

<https://www.phoenixcontact.com/us/products/3035981>



4 mm test adapter, for terminal blocks with 5.2 mm and 6.2 mm pitch

PT 2,5-TWIN/1P-PE - Ground terminal

3209659

<https://www.phoenixcontact.com/us/products/3209659>



PAI-4-FIX-5/6 WH - Test adapter

3035983

<https://www.phoenixcontact.com/us/products/3035983>



4 mm test adapter, for terminal blocks with 5.2 mm and 6.2 mm pitch

PS-5 - Test plug

3030983

<https://www.phoenixcontact.com/us/products/3030983>



Test plug, Modular test plug, number of positions: 1, color: red

PT 2,5-TWIN/1P-PE - Ground terminal

3209659

<https://www.phoenixcontact.com/us/products/3209659>



DP PS-5 - Spacer plate

3036725

<https://www.phoenixcontact.com/us/products/3036725>



Spacer plate, depth: 29 mm, width: 5.2 mm, height: 22.4 mm, number of positions: 1, color: red

PS-5/2,3MM RD - Test plug

3038723

<https://www.phoenixcontact.com/us/products/3038723>



Test plug, number of positions: 1, color: red

PT 2,5-TWIN/1P-PE - Ground terminal

3209659

<https://www.phoenixcontact.com/us/products/3209659>



PP-H 2,5/ 1 - Plug

3209866

<https://www.phoenixcontact.com/us/products/3209866>



Plug, nom. voltage: 500 V, nominal current: 24 A, number of connections: 1, number of positions: 1, connection method: Push-in connection, 1 level, Rated cross section: 2.5 mm², cross section: 0.14 mm² - 4 mm², mounting type: Plug-in mounting, color: gray

PP-H 2,5/ 1 GNYE - Plug

3210020

<https://www.phoenixcontact.com/us/products/3210020>



Plug, nom. voltage: 500 V, nominal current: 24 A, number of connections: 1, number of positions: 1, connection method: Push-in connection, 1 level, Rated cross section: 2.5 mm², cross section: 0.14 mm² - 4 mm², color: green-yellow

PT 2,5-TWIN/1P-PE - Ground terminal

3209659

<https://www.phoenixcontact.com/us/products/3209659>

PP-H 2,5/ 2 - Plug

3209879

<https://www.phoenixcontact.com/us/products/3209879>



Plug, nom. voltage: 500 V, nominal current: 24 A, number of connections: 2, number of positions: 2, connection method: Push-in connection, 1 level, Rated cross section: 2.5 mm², cross section: 0.14 mm² - 4 mm², mounting type: Plug-in mounting, color: gray

PP-H 2,5/ 3 - Plug

3209882

<https://www.phoenixcontact.com/us/products/3209882>



Plug, nom. voltage: 500 V, nominal current: 24 A, number of connections: 3, number of positions: 3, connection method: Push-in connection, 1 level, Rated cross section: 2.5 mm², cross section: 0.14 mm² - 4 mm², color: gray

PT 2,5-TWIN/1P-PE - Ground terminal

3209659

<https://www.phoenixcontact.com/us/products/3209659>



PP-H 2,5/ 3 (1GNYE/2GY) - Plug

3209883

<https://www.phoenixcontact.com/us/products/3209883>



Plug, nom. voltage: 500 V, nominal current: 24 A, number of connections: 3, number of positions: 3, connection method: Push-in connection, 1 level, Rated cross section: 2.5 mm², cross section: 0.14 mm² - 4 mm², color: gray

PP-H 2,5/ 4 - Plug

3209895

<https://www.phoenixcontact.com/us/products/3209895>



Plug, nom. voltage: 500 V, nominal current: 24 A, number of connections: 4, number of positions: 4, connection method: Push-in connection, 1 level, Rated cross section: 2.5 mm², cross section: 0.14 mm² - 4 mm², color: gray

PT 2,5-TWIN/1P-PE - Ground terminal

3209659

<https://www.phoenixcontact.com/us/products/3209659>



PP-H 2,5/ 4 (1GNYE/3GY) - Plug

3209896

<https://www.phoenixcontact.com/us/products/3209896>



Plug, nom. voltage: 500 V, nominal current: 24 A, number of connections: 4, number of positions: 4, connection method: Push-in connection, 1 level, Rated cross section: 2.5 mm², cross section: 0.14 mm² - 4 mm², mounting type: Plug-in mounting, color: gray

PP-H 2,5/ 5 - Plug

3209905

<https://www.phoenixcontact.com/us/products/3209905>



Plug, nom. voltage: 500 V, nominal current: 24 A, number of connections: 5, number of positions: 5, connection method: Push-in connection, 1 level, Rated cross section: 2.5 mm², cross section: 0.14 mm² - 4 mm², mounting type: Plug-in mounting, color: gray

PT 2,5-TWIN/1P-PE - Ground terminal

3209659

<https://www.phoenixcontact.com/us/products/3209659>



PP-H 2,5/ 6 - Plug

3209918

<https://www.phoenixcontact.com/us/products/3209918>



Plug, nom. voltage: 500 V, nominal current: 24 A, number of connections: 6, number of positions: 6, connection method: Push-in connection, 1 level, Rated cross section: 2.5 mm², cross section: 0.14 mm² - 4 mm², mounting type: Plug-in mounting, color: gray

PP-H 2,5/ 7 - Plug

3209921

<https://www.phoenixcontact.com/us/products/3209921>



Plug, nom. voltage: 500 V, nominal current: 24 A, number of connections: 7, number of positions: 7, connection method: Push-in connection, 1 level, Rated cross section: 2.5 mm², cross section: 0.14 mm² - 4 mm², color: gray

PT 2,5-TWIN/1P-PE - Ground terminal

3209659

<https://www.phoenixcontact.com/us/products/3209659>



PP-H 2,5/ 7 (1GNYE/6GY) - Plug

3209922

<https://www.phoenixcontact.com/us/products/3209922>



Plug, nom. voltage: 500 V, nominal current: 24 A, number of connections: 7, number of positions: 7, connection method: Push-in connection, 1 level, Rated cross section: 2.5 mm², cross section: 0.14 mm² - 4 mm², color: gray

PP-H 2,5/ 8 - Plug

3209934

<https://www.phoenixcontact.com/us/products/3209934>



Plug, nom. voltage: 500 V, nominal current: 24 A, number of connections: 8, number of positions: 8, connection method: Push-in connection, 1 level, Rated cross section: 2.5 mm², cross section: 0.14 mm² - 4 mm², mounting type: Plug-in mounting, color: gray

PT 2,5-TWIN/1P-PE - Ground terminal

3209659

<https://www.phoenixcontact.com/us/products/3209659>



PP-H 2,5/ 9 - Plug

3209947

<https://www.phoenixcontact.com/us/products/3209947>



Plug, nom. voltage: 500 V, nominal current: 24 A, number of connections: 9, number of positions: 9, connection method: Push-in connection, 1 level, Rated cross section: 2.5 mm², cross section: 0.14 mm² - 4 mm², color: gray

PP-H 2,5/1-L - Plug

3210062

<https://www.phoenixcontact.com/us/products/3210062>



Plug, nom. voltage: 500 V, nominal current: 24 A, number of connections: 1, number of positions: 1, connection method: Push-in connection, 1 level, Rated cross section: 2.5 mm², cross section: 0.14 mm² - 4 mm², color: gray

PT 2,5-TWIN/1P-PE - Ground terminal

3209659

<https://www.phoenixcontact.com/us/products/3209659>



PP-H 2,5/1-L GNYE - Plug

3210088

<https://www.phoenixcontact.com/us/products/3210088>



Plug, nom. voltage: 500 V, nominal current: 24 A, number of connections: 1, number of positions: 1, connection method: Push-in connection, 1 level, Rated cross section: 2.5 mm², cross section: 0.14 mm² - 4 mm², color: green-yellow

PP-H 2,5/1-M - Plug

3210091

<https://www.phoenixcontact.com/us/products/3210091>



Plug, nom. voltage: 500 V, nominal current: 24 A, number of positions: 1, connection method: Push-in connection, 1 level, Rated cross section: 2.5 mm², cross section: 0.14 mm² - 4 mm², color: gray

PT 2,5-TWIN/1P-PE - Ground terminal

3209659

<https://www.phoenixcontact.com/us/products/3209659>



PP-H 2,5/1-M GNYE - Plug

3210114

<https://www.phoenixcontact.com/us/products/3210114>



Plug, nom. voltage: 500 V, nominal current: 24 A, number of connections: 1, number of positions: 1, connection method: Push-in connection, 1 level, Rated cross section: 2.5 mm², cross section: 0.14 mm² - 4 mm², color: green-yellow

PP-H 2,5/1-R - Plug

3210127

<https://www.phoenixcontact.com/us/products/3210127>



Plug, nom. voltage: 500 V, nominal current: 24 A, number of connections: 1, number of positions: 1, connection method: Push-in connection, 1 level, Rated cross section: 2.5 mm², cross section: 0.14 mm² - 4 mm², color: gray

PT 2,5-TWIN/1P-PE - Ground terminal

3209659

<https://www.phoenixcontact.com/us/products/3209659>



PP-H 2,5/1-R GNYE - Plug

3210143

<https://www.phoenixcontact.com/us/products/3210143>



Plug, nom. voltage: 500 V, nominal current: 24 A, number of connections: 1, number of positions: 1, connection method: Push-in connection, 1 level, Rated cross section: 2.5 mm², cross section: 0.14 mm² - 4 mm², color: green-yellow

PP-H 2,5/10 - Plug

3209950

<https://www.phoenixcontact.com/us/products/3209950>



Plug, nom. voltage: 500 V, nominal current: 24 A, number of connections: 10, number of positions: 10, connection method: Push-in connection, 1 level, Rated cross section: 2.5 mm², cross section: 0.14 mm² - 4 mm², color: gray

PT 2,5-TWIN/1P-PE - Ground terminal

3209659

<https://www.phoenixcontact.com/us/products/3209659>



PP-H 2,5/11 - Plug

3209963

<https://www.phoenixcontact.com/us/products/3209963>



Plug, nom. voltage: 500 V, nominal current: 24 A, number of connections: 11, number of positions: 11, connection method: Push-in connection, 1 level, Rated cross section: 2.5 mm², cross section: 0.14 mm² - 4 mm², color: gray

PP-H 2,5/12 - Plug

3209976

<https://www.phoenixcontact.com/us/products/3209976>



Plug, nom. voltage: 500 V, nominal current: 24 A, number of connections: 12, number of positions: 12, connection method: Push-in connection, 1 level, Rated cross section: 2.5 mm², cross section: 0.14 mm² - 4 mm², color: gray

PT 2,5-TWIN/1P-PE - Ground terminal

3209659

<https://www.phoenixcontact.com/us/products/3209659>



PP-H 2,5/12 (1GNYE/11GY) - Plug

3209977

<https://www.phoenixcontact.com/us/products/3209977>



Plug, nom. voltage: 500 V, nominal current: 24 A, number of connections: 12, number of positions: 12, connection method: Push-in connection, 1 level, Rated cross section: 2.5 mm², cross section: 0.14 mm² - 4 mm², color: gray

PP-H 2,5/13 - Plug

3209989

<https://www.phoenixcontact.com/us/products/3209989>



Plug, nom. voltage: 500 V, nominal current: 24 A, number of connections: 13, number of positions: 13, connection method: Push-in connection, 1 level, Rated cross section: 2.5 mm², cross section: 0.14 mm² - 4 mm², color: gray

PT 2,5-TWIN/1P-PE - Ground terminal

3209659

<https://www.phoenixcontact.com/us/products/3209659>



PP-H 2,5/14 - Plug

3209992

<https://www.phoenixcontact.com/us/products/3209992>



Plug, nom. voltage: 500 V, nominal current: 24 A, number of connections: 14, number of positions: 14, connection method: Push-in connection, 1 level, Rated cross section: 2.5 mm², cross section: 0.14 mm² - 4 mm², color: gray

PP-H 2,5/15 - Plug

3210004

<https://www.phoenixcontact.com/us/products/3210004>



Plug, nom. voltage: 500 V, nominal current: 24 A, number of connections: 15, number of positions: 15, connection method: Push-in connection, 1 level, Rated cross section: 2.5 mm², cross section: 0.14 mm² - 4 mm², color: gray

PT 2,5-TWIN/1P-PE - Ground terminal



3209659

<https://www.phoenixcontact.com/us/products/3209659>

PP-H 2,5/20 - Plug

3061884

<https://www.phoenixcontact.com/us/products/3061884>



Plug, nom. voltage: 500 V, nominal current: 24 A, number of connections: 20, number of positions: 20, connection method: Push-in connection, 1 level, Rated cross section: 2.5 mm², cross section: 0.14 mm² - 4 mm², color: gray

PP-H 2,5/24 - Plug

3061897

<https://www.phoenixcontact.com/us/products/3061897>



Plug, nom. voltage: 500 V, nominal current: 24 A, number of connections: 24, number of positions: 24, connection method: Push-in connection, 1 level, Rated cross section: 2.5 mm², cross section: 0.14 mm² - 4 mm², color: gray

PT 2,5-TWIN/1P-PE - Ground terminal

3209659

<https://www.phoenixcontact.com/us/products/3209659>



DF-SP-H 2,5 - Flange cover

3209824

<https://www.phoenixcontact.com/us/products/3209824>



Flange cover, connection method: Screw connection, depth: 24.7 mm, width: 4.5 mm, height: 35.8 mm, color: gray

ST 2,5-QUATTRO/2P-F - Screw flange

3209853

<https://www.phoenixcontact.com/us/products/3209853>



Screw flange, for screwing COMBI plugs, with the same structure and pitch as the relevant COMBI terminal blocks

PT 2,5-TWIN/1P-PE - Ground terminal

3209659

<https://www.phoenixcontact.com/us/products/3209659>



SZF 1-0,6X3,5 - Screwdriver

1204517

<https://www.phoenixcontact.com/us/products/1204517>



Actuation tool, for ST terminal blocks, also suitable for use as a bladed screwdriver, size: 0.6 x 3.5 x 100 mm, 2-component grip, with non-slip grip

ST-BW - Actuation tool

1207608

<https://www.phoenixcontact.com/us/products/1207608>



Actuation tool, for all 2.5 mm² - 4.0 mm² spring-cages

PT 2,5-TWIN/1P-PE - Ground terminal

3209659

<https://www.phoenixcontact.com/us/products/3209659>



PROJECT COMPLETE - Software

1050453

<https://www.phoenixcontact.com/us/products/1050453>



Intuitive planning and marking software for configuring terminal strips and for professional marking of marking materials for terminal blocks, conductors, cables, devices, and systems. The software is available for download

Phoenix Contact 2024 © - all rights reserved

<https://www.phoenixcontact.com>

Phoenix Contact USA
586 Fulling Mill Road
Middletown, PA 17057, United States
(+717) 944-1300
info@phoenixcon.com