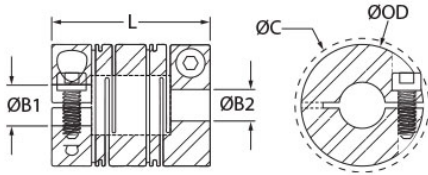




## RLC13-5/16"-5MM-A

Ruland RLC13-5/16"-5MM-A, 0.313" x 5mm Long Slit Coupling, Aluminum, Clamp Style, 0.787" (20.0mm) OD, 1.024" (26.0mm) length



### Description

Ruland RLC13-5/16"-5MM-A is a clamp style slit coupling with 0.3125" x 5mm bores, 0.787" (20.0mm) OD, and 1.024" (26.0mm) length. It is manufactured from a single piece of material and has two sets of intermittent slit cuts allowing for a maintenance-free coupling with high torsional stiffness in relation to comparable couplings, such as beam type. RLC13-5/16"-5MM-A is commonly used in precise positioning applications found in semiconductor, medical, and test and measurement equipment. This long style slit coupling has added torque and misalignment capabilities compared to the short style. RLC13-5/16"-5MM-A is zero-backlash, has a balanced design for reduced vibration at speeds up to 10,000 RPM, and can accommodate all forms of misalignment with light bearing loads. It is manufactured by Reliance Precision Ltd. in their County Cork, Ireland factory from 7075 aluminum for lightweight and low inertia. RLC13-5/16"-5MM-A is inventoried by Ruland and RoHS3 and REACH compliant.

### Product Specifications

<b>Bore (B1)</b>	0.3125 in	<b>Small Bore (B2)</b>	5 mm
<b>B1 Max Shaft Penetration</b>	0.339 in (8.6 mm)	<b>B2 Max Shaft Penetration</b>	0.339 in (8.6 mm)
<b>Outer Diameter (OD)</b>	0.787 in (20.0 mm)	<b>Bore Tolerance</b>	+0.001 in / -0.000 in (+0.020 mm / -0.000 mm)
<b>Length (L)</b>	1.024 in (26.0 mm)	<b>Clearance Diameter (C) MAX</b>	0.858 in (21.8 mm)
<b>Cap Screw</b>	M2.5	<b>Screw Material</b>	18-8 300 Series Stainless Steel
<b>Hex Wrench Size</b>	2.0 mm	<b>Screw Finish</b>	Bright
<b>Seating Torque</b>	0.73 Nm	<b>Number of Screws</b>	2
<b>Dynamic Torque Reversing</b>	8.4 lb-in (0.95 Nm)	<b>Angular Misalignment</b>	3.0°
<b>Dynamic Torque Non-Reversing</b>	12.8 lb-in (1.45 Nm)	<b>Parallel Misalignment</b>	0.010 in (0.25 mm)
<b>Peak Torque</b>	21.7 in-lb (2.45 Nm)	<b>Axial Motion</b>	0.020 in (0.51 mm)
<b>Torsional Stiffness</b>	20.4 lb-in/Deg (2.3 Nm/Deg)	<b>Moment of Inertia</b>	0.0033501 lb-in <sup>2</sup>
<b>Maximum Speed</b>	7,500 RPM	<b>Full Bearing Support Required?</b>	Yes
<b>Zero-Backlash?</b>	Yes	<b>Balanced Design</b>	Yes
<b>Material Specification</b>	7075-T651 Extruded and Drawn Aluminum Bar	<b>Temperature</b>	-110°F to 175°F (-80°C to 80°C)
<b>Finish Specification</b>	SurTec 650	<b>Manufacturer</b>	Reliance Precision Limited
<b>Country of Origin</b>	Ireland	<b>Weight (lbs)</b>	0.076800
<b>UPC</b>	634529299395	<b>Tariff Code</b>	8483.60.8000
<b>UNSPC</b>	31163003		

**Note 1** Performance ratings are for guidance only. The user must determine suitability for a particular application.

**Prop 65**

**⚠ WARNING** This product can expose you to the chemical Nickel (metallic), known to the State of California to cause cancer. For more information go to [www.P65Warnings.ca.gov](http://www.P65Warnings.ca.gov).