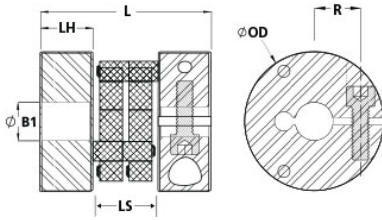




CPRD48-18-A


Ruland CPRD48-18-A, Controflex Coupling Hub, Aluminum, Clamp Style,
2.953" OD, 2.874" Length



Description

Ruland CPRD48-18-A is a Controflex coupling hub with a 1.1250" bore, 2.953" OD, and 2.874" length. It is a component in a four-piece design consisting of two aluminum hubs mounted by pins to two acetal inserts creating a lightweight low inertia coupling capable of speeds up to 7,500 RPM. This four-piece design allows for a highly customizable coupling that easily combines clamp hubs with inch, metric, keyed, and keyless bores. Hardware is metric and tests beyond DIN 912 12.9 standards for maximum torque capabilities. Controflex couplings have a balanced design for reduced vibrations at high speeds, can accommodate all forms of misalignment, and are an excellent fit for encoders, tachometers, and light duty stepper servo positioning applications. CPRD48-18-A is RoHS3 and REACH compliant.

Product Specifications

Bore (B1)	1.1250 in	B1 Max Shaft Penetration	1.417 in
Outer Diameter (OD)	2.953 in (75.0 mm)	Bore Tolerance	+0.003 in / +0.001 in
Hub Width (LH)	0.709 in	Length (L)	2.874 in (73.0 mm)
Space Between Hubs (LS)	1.456 in (37.0 mm)	Forged Clamp Screw	M8
Screw Material	Alloy Steel	Hex Wrench Size	6.0 mm
Screw Finish	Black Oxide	Seating Torque	24.0 Nm
Screw Location (R)	25 mm	Number of Screws	1 ea
Rated Torque	30 Nm	Angular Misalignment	1.0°
Peak Torque	40 Nm	Torsional Stiffness	21.00 Nm/Deg
Axial Motion	0.059 in	Parallel Misalignment	0.079 in
Maximum Speed	7,500 RPM	Recommended Inserts	CPERG48/75-AI
Full Bearing Support Required?	Yes	Zero-Backlash?	Yes
Balanced Design	Yes	Weight (lbs)	0.448000
Temperature	-22°F to 175°F (-30°C to 80°C)	Material Specification	6082 Aluminum Bar
Finish	Clear Anodized	Finish Specification	Clear Anodized
Manufacturer	Schmidt Kupplung	UPC	634529223314
Country of Origin	Germany	Tariff Code	8483.60.8000
UNSPC	31163022		
Note 1	Stainless steel hubs are available upon request.		
Note 2	Performance ratings are for guidance only. The user must determine suitability for a particular application.		
Note 3	Torque ratings for the couplings are based on the physical limitations/failure point of the inserts. Under normal/typical conditions the hubs are capable of holding up to the rated torque of the inserts. In some cases, especially when the smallest standard bores are used or where shafts are undersized, slippage on the shaft is possible below the rated torque. Keyways are available to provide additional torque capacity in the shaft/hub connection when required. Please consult technical support for more assistance.		
Prop 65	 WARNING This product can expose you to chemicals including Ethylene Thiourea and Nickel (metallic), known to the State of California to cause cancer, and Ethylene Thiourea known to the State of California to cause birth defects or other reproductive harm. For more information go to www.P65Warnings.ca.gov .		

Installation Instructions

- Align the bores of the CPRD48-18-A controflex coupling hub on the shafts that are to be joined with the drive pins facing each other and determine if the misalignment parameters are within the limits of the coupling. (*Angular Misalignment: 1.0°, Parallel Misalignment: 2.0 mm, Axial Motion: 1.5 mm*)
- Rotate the hubs on the shaft so the drive pins are 90° from each other.

3. Place the first hub at the end of the shaft. Tighten the clamp screw to 24.0 Nm using a 6.0 mm hex torque wrench.
 4. Place an insert(s) with the standoffs facing the hub over the pins of the hub that was just installed.
 5. Align the drive pins on the second hub to match the holes in the insert(s).
 6. Verify that the space between hubs is 1.456 in, 37.0 mm.
 7. Tighten the clamp screw on the second hub to the recommended seating torque of 24.0 Nm using a 6.0 mm hex torque wrench.
-