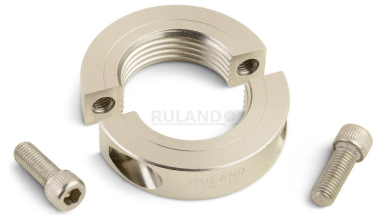
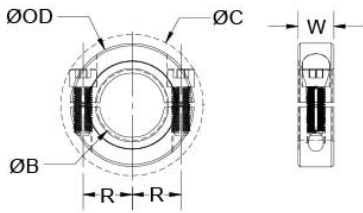




ATSP-12-6-SS

Ruland ATSP-12-6-SS, 3/4" - 6 TPI Acme Threaded Shaft Collar, 303 Stainless Steel, Two-Piece Clamp Style, 1 1/2" OD, 0.500" Width



Description

Ruland ATSP-12-6-SS is an acme threaded one-piece shaft collar with a 3/4" - 6 TPI bore, 1 1/2" OD, and 0.500" width. ATSP-12-6-SS has higher axial holding power than round bore shaft collars of similar size. Ruland double taps threads to ensure a precise and burr-free finish allowing for easy installation and removal, proper fit, and extended shaft life. The clamp style design will not mar the shaft. ATSP-12-6-SS is commonly used for guiding, spacing, stopping, mounting, and component alignment. Equipment manufacturers benefit from the tightly controlled face to bore perpendicularity (TIR of ? .002"). Perpendicularity is critical for alignment when the shaft collar is used as a load bearing face, mechanical stop, or for mounting components such as gears or bearings. Proprietary processes have been developed by Ruland to maintain superior fit, finish, and holding power. ATSP-12-6-SS is stamped with the Ruland name and bore size for ease of identification. Forged screws test beyond ANSI standards to ensure maximum holding power. Halves are mated throughout the manufacturing process for proper fit and alignment. It is manufactured from solid bar stock sourced from select North American mills and machined to a fine burr free finish. Ruland uses 303 stainless steel with hardware of like material for consistent corrosion resistance. Stainless steel hardware undergoes a proprietary surface treatment process to prevent galling. ATSP-12-6-SS is RoHS3 and REACH compliant and manufactured in our Marlborough, MA factory under strict controls using proprietary processes.

Product Specifications

Threaded Bore (B1)	3/4 in - 6 TPI	Thread Class	2G
Outer Diameter (OD)	1 1/2 in	Width (W)	0.500 in
Clearance Diameter (C) MAX	1.763 in	Width Tolerance	+0.003 in / -0.010 in
Recommended Gap	0.063 in	Recommended Shaft Tolerance	+0.0000 in / -0.0005 in
Forged Clamp Screw	1/4-28	Screw Material	18-8 300 Series Stainless Steel
Hex Wrench Size	3/16 in	Screw Finish	Bright
Seating Torque	110 lb-in	Screw Location (R)	0.545 in
Number of Screws	2 ea	Material Specification	Type 303 Austenitic, Non-Magnetic Bar
Temperature	-40°F to 350°F (-40°C to 176°C)	Finish Specification	Bright, No Plating
Manufacturer	Ruland Manufacturing	Country of Origin	USA
Weight (lbs)	0.181400	UPC	634529238370
Tariff Code	8483.60.8000	UNSPC	31162811
Note 1	Performance ratings are for guidance only. The user must determine suitability for a particular application.		
Prop 65	⚠ WARNING This product can expose you to the chemical Nickel (metallic), known to the State of California to cause cancer. For more information go to www.P65Warnings.ca.gov .		

Installation Instructions

1. Use the ATSP-12-6-SS acme threaded shaft collar as it is received.
2. Wipe the bore clean.
3. Apply a thin coat of light oil to the shaft.
4. Place the collar onto the desired shaft location and tighten it using a 3/16 in hex wrench until a slight resistance is felt.
5. Be sure to maintain the gap of 0.063 in between the two halves of the collar during installation.
6. Wring collar into its final position and tighten the screw to the full recommended seating torque of 110 lb-in using a 3/16 in torque wrench.