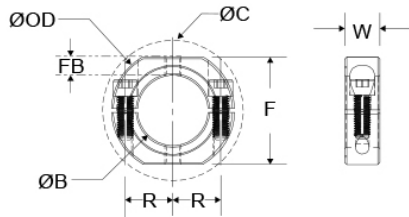




OF-SP-12-A

Ruland OF-SP-12-A, 3/4" Shaft Collar With OD Flats And Holes, 2024 Aluminum, Two-Piece Clamp Style, 1 1/2" OD, 0.500" Width



*Additional hardware NOT included

Description

Ruland OF-SP-12-A is a two-piece shaft collar with a 0.7500" bore, 1 1/2" OD, and 0.500" width. It has OD flats and tapped holes for mounting shaft collars to each other or adjacent components. The clamp style design does not mar the shaft, is easy to remove, and is indefinitely adjustable. OF-SP-12-A is commonly used for guiding, spacing, stopping, mounting, and component alignment. Equipment manufacturers benefit from the tightly controlled face to bore perpendicularity (TIR of ? .002"). Perpendicularity is critical for alignment when the shaft collar is used as a load bearing face, mechanical stop, or for mounting components such as gears or bearings. Proprietary processes have been developed by Ruland to maintain superior fit, finish, and holding power. OF-SP-12-A is stamped with the Ruland name and bore size for ease of identification. Halves are mated throughout the manufacturing process for proper fit and alignment. Forged screws test beyond ANSI standards to ensure maximum holding power. OF-SP-12-A is manufactured from solid bar stock sourced from select North American mills and machined to a fine burr free finish. Ruland uses high grade 2024 aluminum for increased screw seating torque. OF-SP-12-A is RoHS3 and REACH compliant and manufactured in our Marlborough, MA factory under strict controls using proprietary processes.

Product Specifications

Bore (B1)	0.7500 in	Bore Tolerance	+0.0020 in / +0.0005 in
Outer Diameter (OD)	1 1/2 in	Clearance Diameter (C) MAX	1.808 in
Width (W)	0.500 in	Width Tolerance	+0.003 in / -0.010 in
Threaded Mounting Hole	1/4-28	Distance Across Flats (F)	1.313 in
Flat to Bore FB	0.28 in	Recommended Gap	0.063 in
Recommended Shaft Tolerance	+0.0000 in / -0.0005 in	Forged Clamp Screw	1/4-28
Screw Material	Alloy Steel	Hex Wrench Size	3/16 in
Screw Finish	Black Oxide	Seating Torque	170 lb-in
Screw Location (R)	0.545 in	Number of Screws	2 ea
Material Specification	2024-T351 Aluminum Bar	Temperature	-40°F to 225°F (-40°C to 107°C)
Finish Specification	Bright, No Plating	Manufacturer	Ruland Manufacturing
Country of Origin	USA	Weight (lbs)	0.070000
UPC	634529220085	Tariff Code	8483.60.8000
UNSPC	31162811		
Note 1	Additional mounting hardware not included.		
Prop 65	⚠ WARNING This product can expose you to the chemical Ethylene Thiourea, known to the State of California to cause cancer and birth defects or other reproductive harm. For more information go to www.P65Warnings.ca.gov .		

Installation Instructions

1. Use the OF-SP-12-A two-piece shaft collar as it is received.
2. Wipe the bore clean.
3. Apply a thin coat of light oil to the shaft.
4. Place the collar onto the desired shaft location and tighten it using a 3/16 in hex wrench until a slight resistance is felt.
5. Be sure to maintain the gap of 0.063 in between the two halves of the collar during installation.
6. Wring collar into its final position and tighten the screw to the full recommended seating torque of 170 lb-in using a 3/16 in torque wrench.