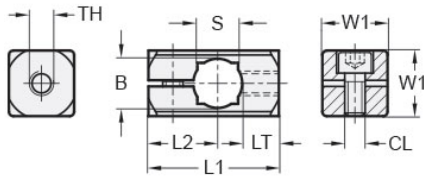




MT12-CSBC-M5-A

Ruland Sensor Bracket Clamp Connector, Thru Hole 12mm, Thread M5, L 32mm, Aluminum



Description

Ruland MT12-CSBC-M5-A is a sensor bracket clamp connector with a 12mm thru hole diameter, M5 thread, 16mm width/height, and 32mm overall length. It is made with aluminum and has stainless steel cap screws. These clamp connectors are designed to fit with sensor brackets and mounting brackets with the same threading. Adjustable lever clamp kits with the same thread size can be attached to this clamp connector. The width/height of the bracket clamp must also be equal to the sleeve and stud length of the adjustable lever clamp kit. All bracket clamps from Ruland are RoHS3 and REACH compliant.

Product Specifications

Thru Hole Diameter B	12 mm	Thru Hole Tolerance	+0.11/-0 mm
Square Thru Hole S	10 mm	Thread (TH)	M5
Thread Depth LT	9 mm	Edge To Center L2	17 mm
Width & Height W1	16 mm	Overall Length L1	32 mm
Clamp Screw CL	M5	Weight (lbs)	0.035300
Material Specification	Aluminum	Manufacturer	JW Winco/ Otto Ganter
UPC	634529245712	Country of Origin	Germany
Tariff Code	7609.00.0000	UNSPC	31162908