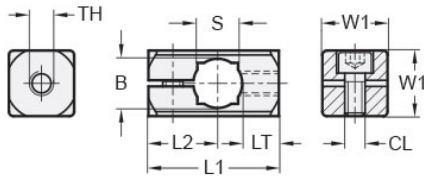




## MT8-CSBC-M5-A

Ruland Sensor Bracket Clamp Connector, Thru Hole 8mm, Thread M5, L 25mm, Aluminum



### Description

Ruland MT8-CSBC-M5-A is a sensor bracket clamp connector that attaches to a 8mm round tube and has an 14mm width and height, and 25mm overall length,. It is designed to fit on Ruland tubes and flange bolt bases that begin with MT8. MT8-CSBC-M5-A is aluminum and screws are 304 stainless steel for use in most industrial applications. This bracket clamp is used to support brackets for mounting sensors, screens, reflectors, plexiglass machine guards, and other industrial components. The bracket is mounted directly to the clamp by a single M5 screw. An MT8-ALK-M4-16adjustable clamping handle can be used to rapidly reposition MT8-CSBC-M5-A or the tube it is attached to without the use of tools. MT8-CSBC-M5-A is manufactured by Otto Ganter, inventoried by Ruland, and RoHS3 compliant.

### Product Specifications

Thru Hole Diameter B	8 mm	Thru Hole Tolerance	+0.09/-0 mm
Thread (TH)	M5	Thread Depth LT	7.5 mm
Edge To Center L2	13.5 mm	Width & Height W1	14 mm
Overall Length L1	25 mm	Clamp Screw CL	M4
Weight (lbs)	0.024300	Material Specification	Aluminum
Manufacturer	JW Winco/ Otto Ganter	UPC	634529230718
Country of Origin	Germany	Tariff Code	7609.00.0000
UNSPC	31162908		
Note 1	Performance ratings are for guidance only. The user must determine suitability for a particular application.		
Prop 65	<b>⚠ WARNING</b> This product can expose you to the chemical Nickel (metallic), known to the State of California to cause cancer. For more information go to <a href="http://www.P65Warnings.ca.gov">www.P65Warnings.ca.gov</a> .		