



Terminals & Splices > Terminal Housings, Insulation Sleeves & Blocks > Crimp Terminal Housings



Terminal Type: **Receptacle**
Number of Positions: **2**
Terminal Orientation: **Straight**
UL Flammability Rating: **UL 94V-0**
Primary Product Color: **Natural**

Features

Product Type Features

Sealable	No
Connector & Contact Terminates To	Wire & Cable

Configuration Features

Number of Positions	2
---------------------	---

Body Features

Primary Product Color	Natural
-----------------------	---------

Contact Features

Terminal Type	Receptacle
Terminal Orientation	Straight
Contact Mating Retention	With

Mechanical Attachment

Mating Alignment Type	None
Mating Alignment	Without
Connector Mounting Type	Cable Mount (Free-Hanging)



Housing Features

Housing Material	Nylon
Centerline (Pitch)	7.6 mm[.299 in]

Usage Conditions

Operating Temperature Range	-40 - 105 °C[-40 - 221 °F]
-----------------------------	----------------------------

Industry Standards

UL Flammability Rating	UL 94V-0
------------------------	----------

Packaging Features

Packaging Quantity	3000
--------------------	------

Product Compliance

For compliance documentation, visit the product page on [TE.com](#)>

EU RoHS Directive 2011/65/EU	Compliant
EU ELV Directive 2000/53/EC	Compliant
China RoHS 2 Directive MIIT Order No 32, 2016	No Restricted Materials Above Threshold
EU REACH Regulation (EC) No. 1907/2006	Current ECHA Candidate List: JAN 2024 (240) Candidate List Declared Against: JAN 2024 (240) Does not contain REACH SVHC
Halogen Content	Not Low Halogen - contains Br or Cl > 900 ppm.
Solder Process Capability	Not applicable for solder process capability

Product Compliance Disclaimer

This information is provided based on reasonable inquiry of our suppliers and represents our current actual knowledge based on the information they provided. This information is subject to change. The part numbers that TE has identified as EU RoHS compliant have a maximum concentration of 0.1% by weight in homogenous materials for lead, hexavalent chromium, mercury, PBB, PBDE, DBP, BBP, DEHP, DIBP, and 0.01% for cadmium, or qualify for an exemption to these limits as defined in the Annexes of Directive 2011/65/EU (RoHS2). Finished electrical and electronic equipment products will be CE marked as required by Directive 2011/65/EU. Components may not be CE marked. Additionally, the part numbers that TE has identified as EU ELV compliant have a maximum concentration of 0.1% by weight in homogenous materials for lead, hexavalent chromium, and mercury, and 0.01% for cadmium, or qualify for an exemption to these limits as defined in the Annexes of Directive 2000/53/EC (ELV). Regarding the REACH Regulation, the information TE provides on SVHC in articles for this part number is based on the latest European Chemicals Agency (ECHA) 'Guidance on requirements for substances in articles' posted at this URL: <https://echa.europa.eu/guidance-documents/guidance-on-reach>

Compatible Parts



TE Part # 353253-1
PL EX 110 (2.8 MM) HOUSING
RECEPTACLE

Also in the Series | Positive Lock 110



Crimp Terminal Housings(12)



Insertion & Extraction Tools(1)



Quick Disconnects(8)

Customers Also Bought



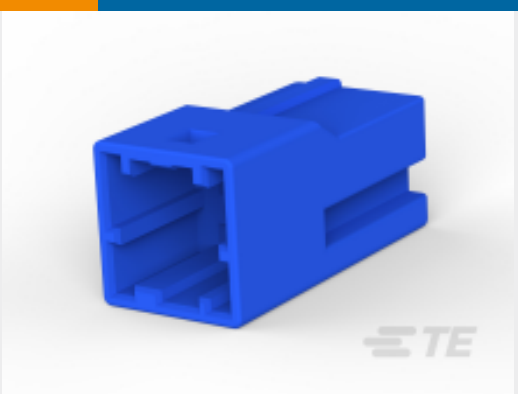
TE Part # 316769-1
POWER D/LOCK CAP HSG 1P
NATURA



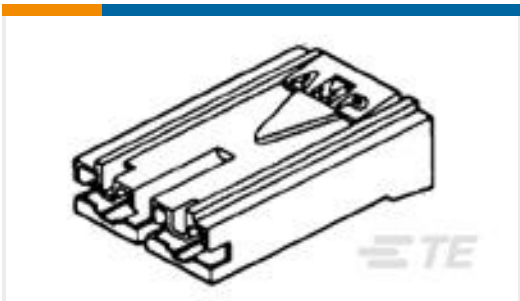
TE Part # 316770-1
AMP POWER DBL LOCK 1P PLATE



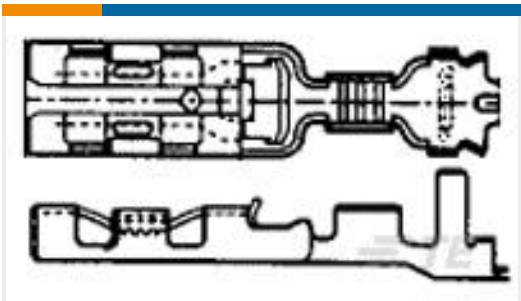
TE Part # 1565088-1
GRACE INERTIA CONNECTOR 3.5 6P



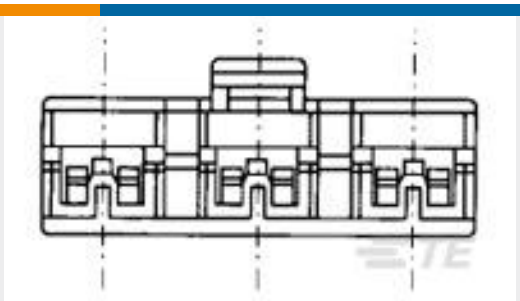
TE Part # 2-1903391-3
GIC 2.5 W CAP HSG 2P BLUE



TE Part # 179720-1
187 HSG. PL MKII REC. 10mm 2P NAT



TE Part # 353250-2
110 PL EX REC. 20-16AWG PTPHBZ



TE Part # 353255-1
110 HSG. PL EX REC. 7.6mm 3P NAT

Documents

Product Drawings

POSITIVE LOCK EX 110 (2.8 MM)

English

CAD Files

3D PDF

3D



Customer View Model

[ENG_CVM_CVM_353254-1_J.2d_dxf.zip](#)

English

Customer View Model

[ENG_CVM_CVM_353254-1_J.3d_igs.zip](#)

English

Customer View Model

[ENG_CVM_CVM_353254-1_J.3d_stp.zip](#)

English

By downloading the CAD file I accept and agree to the [Terms and Conditions](#) of use.

Product Specifications

[Application Specification](#)

English

[110 Series Positive Lock EX-III Contact](#)

Japanese

[Application Specification](#)

Japanese

[110 Series Positive Lock EX-III Contact](#)

English

Agency Approvals

[UL Report](#)

English