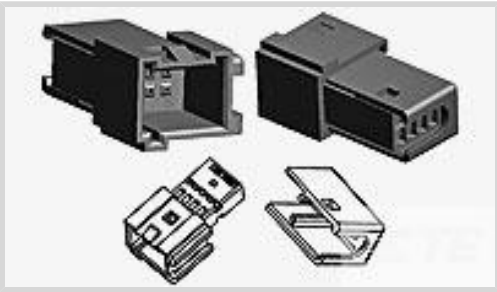




Connectors > Automotive Connectors > Automotive Housings > MQS, CONNECTOR HOUSING



Connector System: **Wire-to-Wire**

Number of Positions: **8**

Connector & Housing Type: **Housing for Male Terminals**

Centerline (Pitch): **2.54 mm [.1 in]**

Sealable: **No**

[All MQS, CONNECTOR HOUSING \(435\)](#)

Features

Product Type Features

Mixed & Hybrid Connector	No
Connector Shape	Rectangular
Connector System	Wire-to-Wire
Connector & Housing Type	Housing for Male Terminals
Sealable	No
Connector & Contact Terminates To	Wire & Cable
Primary Locking Feature	On the Terminal

Configuration Features

Number of Positions	8
Number of Rows	2

Electrical Characteristics

Operating Voltage	24 VDC
Nominal Voltage Architecture	24 V

Body Features

Cable Exit Angle	180°
Primary Product Color	Black



Contact Features

Contact Size	.63mm
Contact Type	Tab
Contact Current Rating (Max)	6 A

Mechanical Attachment

Terminal Position Assurance	Yes
Strain Relief	Without
Mating Alignment Type	Polarized
Mating Alignment	With
Connector Mounting Type	Cable Mount (Free-Hanging)

Housing Features

Housing Material	PBT GF
Centerline (Pitch)	2.54 mm[.1 in]

Dimensions

Connector Height	28.5 mm[1.122 in]
Product Width	13.7 mm[.539 in]
Product Length	16.7 mm[.657 in]
Row-to-Row Spacing	3.1 mm[.122 in]

Usage Conditions

Operating Temperature (Max)	70 °C, 75 °C, 80 °C, 85 °C[158 °F][167 °F] [176 °F][185 °F]
Operating Temperature Range	-25 - 85 °C[-13 - 185 °F]

Operation/Application

Circuit Application	Signal
---------------------	--------

Packaging Features

Packaging Quantity	1000
Packaging Method	Box

Other

Serviceable	Yes
Connector Position Assurance Capable	No

Product Compliance

For compliance documentation, visit the product page on TE.com>







EU RoHS Directive 2011/65/EU	Compliant
EU ELV Directive 2000/53/EC	Compliant
China RoHS 2 Directive MIIT Order No 32, 2016	No Restricted Materials Above Threshold
EU REACH Regulation (EC) No. 1907/2006	Current ECHA Candidate List: JAN 2024 (240) Candidate List Declared Against: JAN 2024 (240) Does not contain REACH SVHC
Halogen Content	Low Halogen - Br, Cl, F, I < 900 ppm per homogenous material. Also BFR/CFR/PVC Free
Solder Process Capability	Not applicable for solder process capability

Product Compliance Disclaimer

This information is provided based on reasonable inquiry of our suppliers and represents our current actual knowledge based on the information they provided. This information is subject to change. The part numbers that TE has identified as EU RoHS compliant have a maximum concentration of 0.1% by weight in homogenous materials for lead, hexavalent chromium, mercury, PBB, PBDE, DBP, BBP, DEHP, DIBP, and 0.01% for cadmium, or qualify for an exemption to these limits as defined in the Annexes of Directive 2011/65/EU (RoHS2). Finished electrical and electronic equipment products will be CE marked as required by Directive 2011/65/EU. Components may not be CE marked. Additionally, the part numbers that TE has identified as EU ELV compliant have a maximum concentration of 0.1% by weight in homogenous materials for lead, hexavalent chromium, and mercury, and 0.01% for cadmium, or qualify for an exemption to these limits as defined in the Annexes of Directive 2000/53/EC (ELV). Regarding the REACH Regulation, the information TE provides on SVHC in articles for this part number is based on the latest European Chemicals Agency (ECHA) 'Guidance on requirements for substances in articles' posted at this URL: <https://echa.europa.eu/guidance-documents/guidance-on-reach>

Compatible Parts

 <p>TE Part # CAT-M8793-CH8172 MQS, CONNECTOR HOUSING</p>	 <p>TE Part # 5-963716-1 MQS0,63 Sn tab LL unseal. 0,5-0,75</p>	 <p>TE Part # 284867-1 PIN HOUSING FOR 8P MQS CLOCK</p>	 <p>TE Part # 284868-1 SECONDARY LOCK FOR 8P MQS CLOC</p>
--	---	--	--

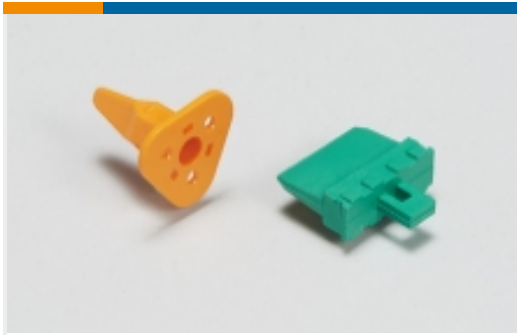
Also in the Series | MQS



Automotive Connector Caps & Covers (113)



Automotive Connector EMC Shielding (3)



Automotive Connector Locks & Position Assurance(26)



Automotive Housings(379)



Automotive Terminals(88)



Connector Seals & Cavity Plugs(26)



Insertion & Extraction Tools(42)



Other Automotive Connector Accessories(7)



PCB Headers & Receptacles(143)

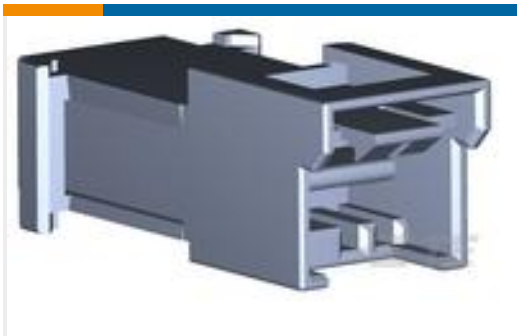
Customers Also Bought



TE Part # 1379102-1
18POS MQS REC



TE Part # 6-1625971-0
HSA25 680R 5%



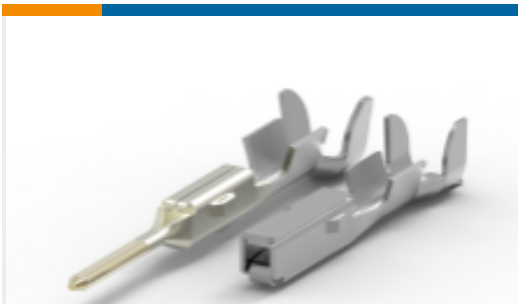
TE Part # 1718044-2
RAST2.5 W2W Crimp-IDC 2pos Motor Mnt



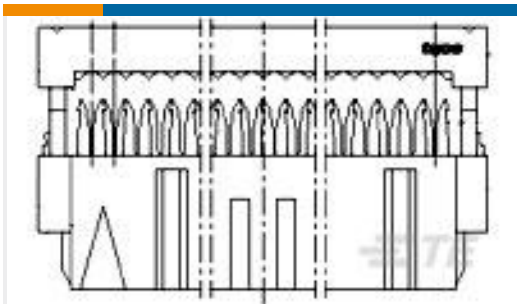
TE Part # 2-2176416-7
9W STD M/OX 5% 620R



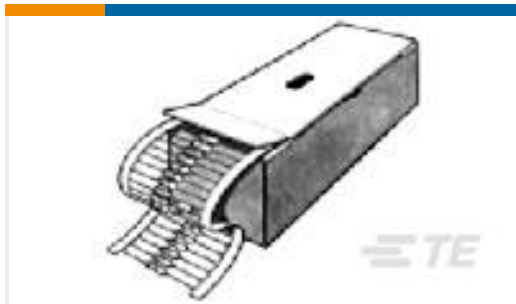
TE Part # 2525596010
RBK-ILS-125-NR1-0-27MM



TE Part # 917309-1
MULTILOCK, RECEPTACLE AND TAB



TE Part # 1-215915-4
AMP-LATCH 15.2 HIGH TAPE



TE Part # 1-2176085-2
EP 9W (S) 680R 5%



Documents

Product Drawings

8POS MQS TAB

English

CAD Files

Customer View Model

ENG_CVM_CVM_284869-1_A1.2d_dxf.zip

English

Customer View Model

ENG_CVM_CVM_284869-1_A1.3d_stp.zip

English

Customer View Model

ENG_CVM_CVM_284869-1_A1.3d_igs.zip

English

3D PDF

3D

By downloading the CAD file I accept and agree to the [Terms and Conditions](#) of use.

Datasheets & Catalog Pages

Micro Quadlok Interconnection System (MQS)

English

Product Specifications

8 POSITIONS MICRO QUADLOK SYSTEM

English

Product Specification

English