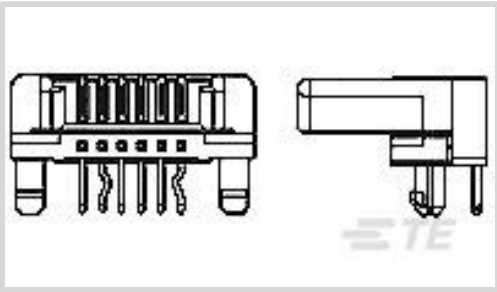




Connectors > PCB Connectors > PCB Headers & Receptacles



PCB Connector Assembly Type: **PCB Mount Receptacle**

PCB Mount Orientation: **Right Angle**

Connector System: **Board-to-Board**

Number of Positions: **30**

Number of Rows: **1**

Features

Product Type Features

| | |
|-----------------------------------|-----------------------|
| PCB Connector Assembly Type | PCB Mount Receptacle |
| Connector System | Board-to-Board |
| Sealable | No |
| Connector & Contact Terminates To | Printed Circuit Board |

Configuration Features

| | |
|-----------------------|-------------|
| PCB Mount Orientation | Right Angle |
| Number of Positions | 30 |
| Number of Rows | 1 |

Electrical Characteristics

| | |
|-----------------------|--------|
| Insulation Resistance | 100 MΩ |
| Operating Voltage | 50 VAC |

Body Features

| | |
|-----------------------|-------|
| Primary Product Color | White |
|-----------------------|-------|

Contact Features

| | |
|-----------------------|-----------------|
| Contact Layout | Inline |
| Mating Tab Width | 1.6 mm[.063 in] |
| Mating Tab Thickness | .25 mm[.01 in] |
| Contact Base Material | Phosphor Bronze |



| | |
|--|-----------------|
| Contact Mating Area Plating Material | Tin |
| Contact Mating Area Plating Material Thickness | .8 µm[31.5 µin] |
| Contact Type | Receptacle |
| Contact Current Rating (Max) | 1 A |

Termination Features

| | |
|---|-----------------------|
| Rectangular Termination Post & Tail Thickness | .6 mm[.024 in] |
| Rectangular Termination Post & Tail Width | .4 mm[.016 in] |
| Termination Post & Tail Length | 3.2 mm[.126 in] |
| Termination Method to Printed Circuit Board | Through Hole - Solder |

Mechanical Attachment

| | |
|--------------------------|--------------------------------|
| PCB Mount Retention Type | Kinked Legs |
| Mating Alignment | With |
| Mating Alignment Type | Self-Aligning (Alignment Free) |
| PCB Mount Retention | With |
| PCB Mount Alignment | With |
| Connector Mounting Type | Board Mount |

Housing Features

| | |
|-----------------------|------------------|
| Mating Entry Location | Side |
| Centerline (Pitch) | 1.25 mm[.049 in] |
| Housing Material | Nylon 6/6 GF |

Dimensions

| | |
|-----------------------------|-----------------|
| Connector Height | 5.4 mm[.213 in] |
| Row-to-Row Spacing | 3 mm[.118 in] |
| PCB Thickness (Recommended) | 1.6 mm[.062 in] |

Usage Conditions

| | |
|-----------------------------|----------------------------|
| Operating Temperature Range | -30 - 105 °C[-22 - 221 °F] |
|-----------------------------|----------------------------|

Operation/Application

| | |
|---------------------|--------|
| Circuit Application | Signal |
|---------------------|--------|

Industry Standards

| | |
|------------------------|----------|
| UL Flammability Rating | UL 94V-0 |
|------------------------|----------|

Packaging Features

| | |
|--------------------|-----|
| Packaging Quantity | 108 |
|--------------------|-----|



| | |
|------------------|-----------|
| Packaging Method | Box, Tray |
|------------------|-----------|

Product Compliance

For compliance documentation, visit the product page on TE.com>

| | |
|---|---|
| EU RoHS Directive 2011/65/EU | Compliant |
| EU ELV Directive 2000/53/EC | Compliant |
| China RoHS 2 Directive MIIT Order No 32, 2016 | No Restricted Materials Above Threshold |
| EU REACH Regulation (EC) No. 1907/2006 | Current ECHA Candidate List: JAN 2024 (240) Candidate List Declared Against: JAN 2024 (240) Does not contain REACH SVHC |
| Halogen Content | Not Low Halogen - contains Br or Cl > 900 ppm. |
| Solder Process Capability | Wave solder capable to 265°C |

Product Compliance Disclaimer

This information is provided based on reasonable inquiry of our suppliers and represents our current actual knowledge based on the information they provided. This information is subject to change. The part numbers that TE has identified as EU RoHS compliant have a maximum concentration of 0.1% by weight in homogenous materials for lead, hexavalent chromium, mercury, PBB, PBDE, DBP, BBP, DEHP, DIBP, and 0.01% for cadmium, or qualify for an exemption to these limits as defined in the Annexes of Directive 2011/65/EU (RoHS2). Finished electrical and electronic equipment products will be CE marked as required by Directive 2011/65/EU. Components may not be CE marked. Additionally, the part numbers that TE has identified as EU ELV compliant have a maximum concentration of 0.1% by weight in homogenous materials for lead, hexavalent chromium, and mercury, and 0.01% for cadmium, or qualify for an exemption to these limits as defined in the Annexes of Directive 2000/53/EC (ELV). Regarding the REACH Regulation, the information TE provides on SVHC in articles for this part number is based on the latest European Chemicals Agency (ECHA) 'Guidance on requirements for substances in articles' posted at this URL: <https://echa.europa.eu/guidance-documents/guidance-on-reach>

Compatible Parts



Also in the Series | AMPMODU 2 mm



Connector Contacts(27)

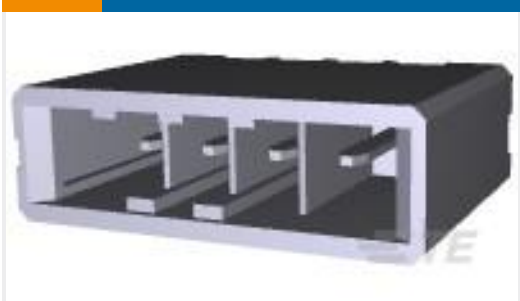


PCB Headers & Receptacles(10387)

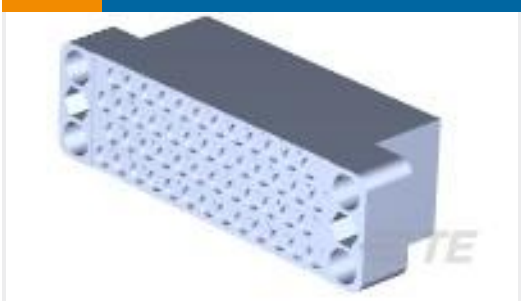


Wire-to-Board Connector Assemblies & Housings(202)

Customers Also Bought



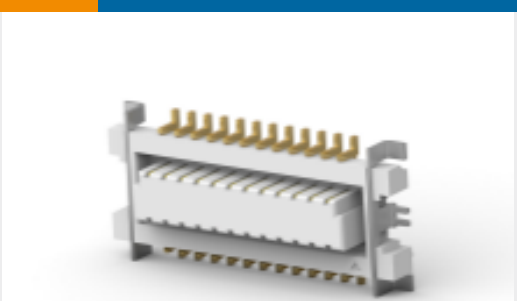
TE Part # 1-917338-2
DYNAMIC 3200 VERTI. HDR ASY 4P



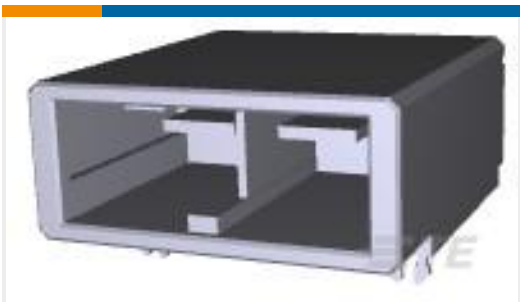
TE Part # 200277-2
FEMALE BLOCK 50 PL.



TE Part # 1775014-2
0.8 BTB FS 3H PLUG G/F 24P



TE Part # 1775013-2
0.8 BTB FS RCPT G/F 24P



TE Part # 2-353079-2
DYNAMIC D-5200 HDR H ASSY 2P



TE Part # 2199075-2
4POS 1.6P 1.65H BTB CONN

Documents

CAD Files

Customer View Model

[ENG_CVM_CVM_3-917360-0_C.2d_dxf.zip](#)

English

3D PDF

3D

Customer View Model

[ENG_CVM_CVM_3-917360-0_C.3d_igs.zip](#)

English

Customer View Model

[ENG_CVM_CVM_3-917360-0_C.3d_stp.zip](#)

English

By downloading the CAD file I accept and agree to the [Terms and Conditions](#) of use.

Product Specifications

Product Specification

Japanese

3-917360-0

PCB Mount Receptacle, Right Angle, Board-to-Board, 30 Position, 1.25 mm [.049 in]
Centerline, Tin, Through Hole - Solder, Signal, White, AMPMODU 2 mm



Crimping Multi-Interlock Connector Contacts

Japanese