



Product Compliance

[For compliance documentation, visit the product page on TE.com>](#)

| | |
|---|---|
| EU RoHS Directive 2011/65/EU | Compliant with Exemptions |
| EU ELV Directive 2000/53/EC | Compliant with Exemptions |
| China RoHS 2 Directive MIIT Order No 32, 2016 | Restricted Materials Above Threshold |
| EU REACH Regulation (EC) No. 1907/2006 | Current ECHA Candidate List: JAN 2024 (240) Candidate List Declared Against: JAN 2022 (223) SVHC > Threshold: Pb (3.7% in Component) Article Safe Usage Statements: Do not eat, drink or smoke when using this product. Wash thoroughly after handling. Recycle if possible and dispose of the article by following all applicable governmental regulations relevant to your geographic location. |
| Halogen Content | Not Low Halogen - contains Br or Cl > 900 ppm. |
| Solder Process Capability | Not applicable for solder process capability |

Product Compliance Disclaimer

This information is provided based on reasonable inquiry of our suppliers and represents our current actual knowledge based on the information they provided. This information is subject to change. The part numbers that TE has identified as EU RoHS compliant have a maximum concentration of 0.1% by weight in homogenous materials for lead, hexavalent chromium, mercury, PBB, PBDE, DBP, BBP, DEHP, DIBP, and 0.01% for cadmium, or qualify for an exemption to these limits as defined in the Annexes of Directive 2011/65/EU (RoHS2). Finished electrical and electronic equipment products will be CE marked as required by Directive 2011/65/EU. Components may not be CE marked. Additionally, the part numbers that TE has identified as EU ELV compliant have a maximum concentration of 0.1% by weight in homogenous materials for lead, hexavalent chromium, and mercury, and 0.01% for cadmium, or qualify for an exemption to these limits as defined in the Annexes of Directive 2000/53/EC (ELV). Regarding the REACH Regulation, the information TE provides on SVHC in articles for this part number is based on the latest European Chemicals Agency (ECHA) 'Guidance on requirements for substances in articles' posted at this URL: <https://echa.europa.eu/guidance-documents/guidance-on-reach>

Also in the Series | [HDC HA](#)

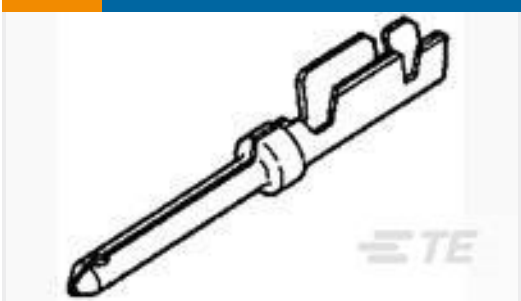


Rectangular Contact Inserts(25)

Customers Also Bought



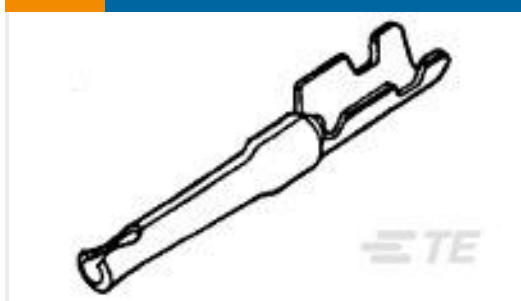
TE Part # 167294-1
25P HDP20 PLUG ASSY



TE Part # 1658670-4
PIN CONTACT,22 DF,LP,22-28 AWG



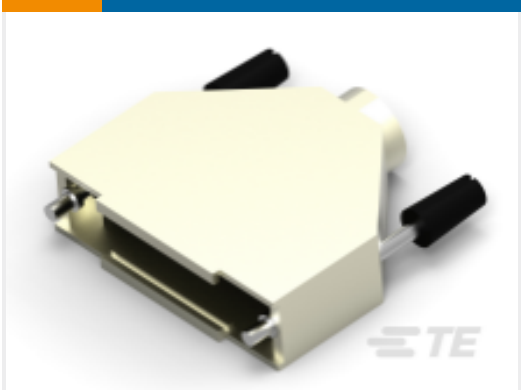
TE Part # 166291-1
20DF COSI SOCKET



TE Part # 1658686-4
SOCKET CONTACT,22 DF,LP,22-28



TE Part # 5-1478762-2
Metal backshell 15 way Top Entry-KIT



TE Part # 5-1478762-3
Metal backshell 25 way Top Ent



TE Part # 323680
TERMINAL,SOLIS R HT 12-10 10



TE Part # 33458
TERMINAL,SOLIS R 12-10 1/4



TE Part # 8B-0022-001-000
940 METAL PROTECTION CAP



TE Part # 1-1103415-1
HA.10.BU.S.B1-10

Documents

CAD Files

3D PDF

English

Customer View Model

ENG_CVM_1-1103414-1_C1.2d_dxf.zip

English

Customer View Model

ENG_CVM_1-1103414-1_C1.3d_igs.zip



English

Customer View Model

[ENG_CVM_1-1103414-1_C1.3d_stp.zip](#)

English

By downloading the CAD file I accept and agree to the [Terms and Conditions](#) of use.

Agency Approvals

[Agency Approval Document](#)

English