



Timer Connector System

TE Internal #: 1-963484-1
PCB Mount Header, Horizontal, Wire-to-Board, 70 Position, 4 mm / 5 mm [.157 in / .196 in] Centerline, Fully Shrouded, Tin, Timer Connector System

[View on TE.com >](#)

Connectors > PCB Connectors > PCB Headers & Receptacles > High Pin Count Header



Connector System: **Wire-to-Board**
Number of Positions: **70**
Centerline (Pitch): **4 mm, 5 mm [.157 in, .196 in]**
Sealable: **No**
PCB Mount Orientation: **Horizontal**

[All High Pin Count Header \(92\)](#)

Features

Product Type Features

Mixed & Hybrid Header	Yes
Connector Shape	Rectangular
PCB Connector Assembly Type	PCB Mount Header
Header Type	Fully Shrouded
Connector System	Wire-to-Board
Sealable	No

Configuration Features

Number of Sections	1
Number of Signal Positions	70
Number of Positions	70
PCB Mount Orientation	Horizontal
Number of Rows	3



Body Features

Primary Product Color	Black
Connector & Keying Code	A1

Contact Features

Contact Size	1.6mm, 3mm
Contact Type	Tab
Mating Tab Width	1.6 mm, 3 mm[.063 in][.118 in]
Mating Tab Thickness	.6 mm, .8 mm[.023 in][.031 in]
Contact Mating Area Plating Material	Tin

Termination Features

Termination Method to Printed Circuit Board	Through Hole - Solder
---	-----------------------

Mechanical Attachment

Mounting Holes	With
Mating Alignment	With
PCB Mount Alignment	With
Panel Mount Feature	Without
PCB Mount Retention	With
PCB Mount Retention Type	Mounting Hole

Housing Features

Centerline (Pitch)	4 mm, 5 mm[.157 in][.196 in]
--------------------	------------------------------

Dimensions

Connector Length	112.7 mm[4.43 in]
Connector Width	37.1 mm[1.46 in]
Profile Height from PCB	32.5 mm[1.27 in]

Operation/Application

Shielded	No
Circuit Application	Signal

Packaging Features

Packaging Quantity	55
Packaging Method	Tray

Product Compliance







For compliance documentation, visit the product page on TE.com>

EU RoHS Directive 2011/65/EU	Compliant
EU ELV Directive 2000/53/EC	Compliant
China RoHS 2 Directive MIIT Order No 32, 2016	No Restricted Materials Above Threshold
EU REACH Regulation (EC) No. 1907/2006	Current ECHA Candidate List: JAN 2024 (240) Candidate List Declared Against: JAN 2024 (240) Does not contain REACH SVHC
Halogen Content	Low Halogen - Br, Cl, F, I < 900 ppm per homogenous material. Also BFR/CFR/PVC Free
Solder Process Capability	Not applicable for solder process capability

Product Compliance Disclaimer

This information is provided based on reasonable inquiry of our suppliers and represents our current actual knowledge based on the information they provided. This information is subject to change. The part numbers that TE has identified as EU RoHS compliant have a maximum concentration of 0.1% by weight in homogenous materials for lead, hexavalent chromium, mercury, PBB, PBDE, DBP, BBP, DEHP, DIBP, and 0.01% for cadmium, or qualify for an exemption to these limits as defined in the Annexes of Directive 2011/65/EU (RoHS2). Finished electrical and electronic equipment products will be CE marked as required by Directive 2011/65/EU. Components may not be CE marked. Additionally, the part numbers that TE has identified as EU ELV compliant have a maximum concentration of 0.1% by weight in homogenous materials for lead, hexavalent chromium, and mercury, and 0.01% for cadmium, or qualify for an exemption to these limits as defined in the Annexes of Directive 2000/53/EC (ELV). Regarding the REACH Regulation, the information TE provides on SVHC in articles for this part number is based on the latest European Chemicals Agency (ECHA) 'Guidance on requirements for substances in articles' posted at this URL: <https://echa.europa.eu/guidance-documents/guidance-on-reach>

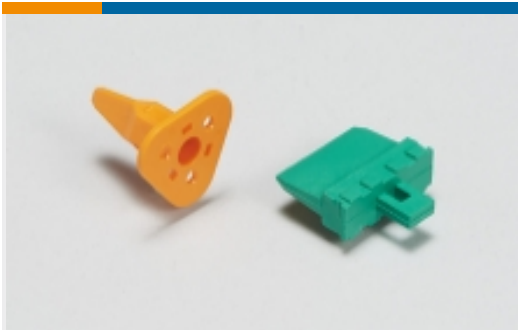
Compatible Parts

 <p>TE Part # CAT-T4827-CH8172 Timer Connector Housing</p>	 <p>TE Part # 963361-1 SEALING F/70P HSG</p>	 <p>TE Part # 1-962526-1 MESSERLEI-GH MIX70P</p>	 <p>TE Part # 3-929991-1 MESSER 3,0</p>
---	--	---	--

Also in the Series | Timer Connector System



Automotive Connector Caps & Covers (14)



Automotive Connector Locks & Position Assurance(15)



Automotive Housings(217)



Automotive Terminals(136)



Connector Seals & Cavity Plugs(31)



Crimp Terminal Housings(13)



Insertion & Extraction Tools(18)



Other Automotive Connector Accessories(1)

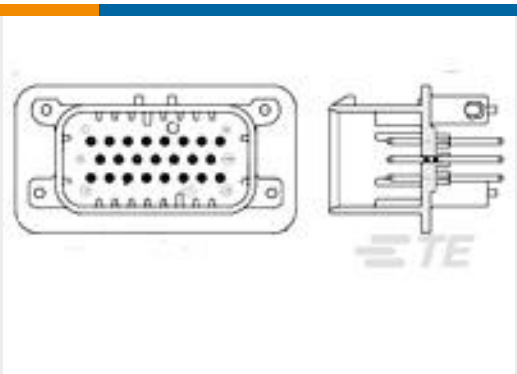


PCB Headers & Receptacles(77)

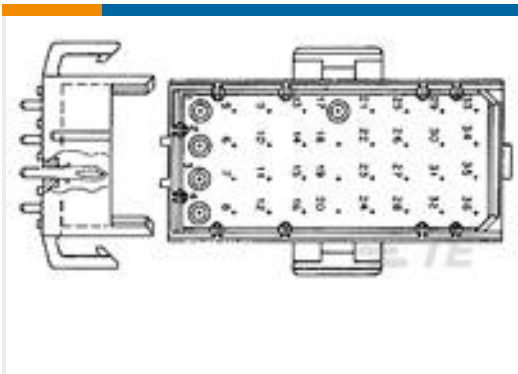


Quick Disconnects(4)

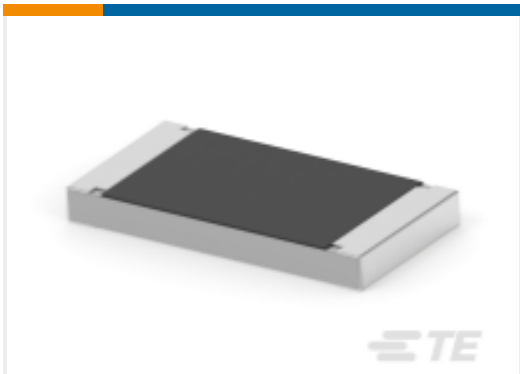
Customers Also Bought



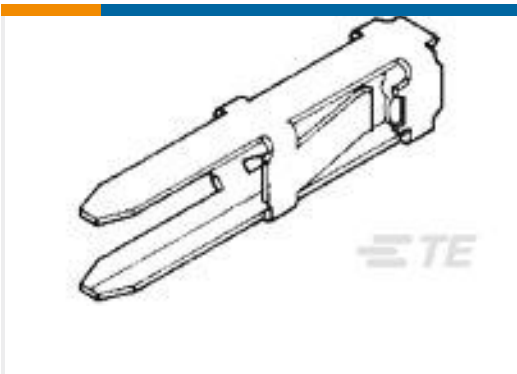
TE Part # 776231-1
35POS,PIN DIA 1.3,HDR ASSY,
180DEG,COD 1



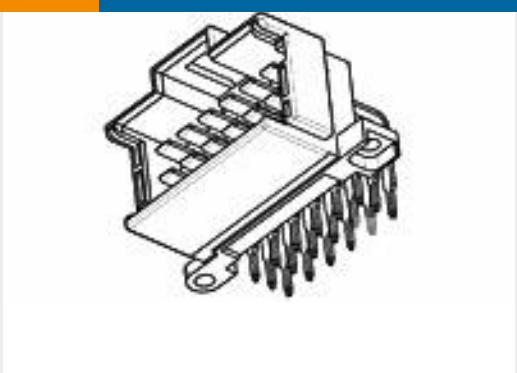
TE Part # 640505-3
24P MR HDR ASSY V0



TE Part # 2-2176350-9
CRGCO 2512 47K 5%



TE Part # 86477-3
MOD I RECP STMPD



TE Part # 966140-6
MESSERLEISTE 21P



TE Part # 962876-1
TIMER, RECEPTACLE AND TAB



TE Part # 174975-1
040 MLC 16POS CAP ASSY V TIN

Documents



Product Drawings

MESSERLEISTE MIX70P

English

CAD Files

3D PDF

3D

Customer View Model

ENG_CVM_CVM_1-963484-1_F.2d_dxf.zip

English

Customer View Model

ENG_CVM_CVM_1-963484-1_F.3d_igs.zip

English

Customer View Model

ENG_CVM_CVM_1-963484-1_F.3d_stp.zip

English

By downloading the CAD file I accept and agree to the [Terms and Conditions](#) of use.

Product Specifications

70 pos. - Coupling for Junior-Power-Timer Contact & Micro - Timer Contact

English

Product Specification

English