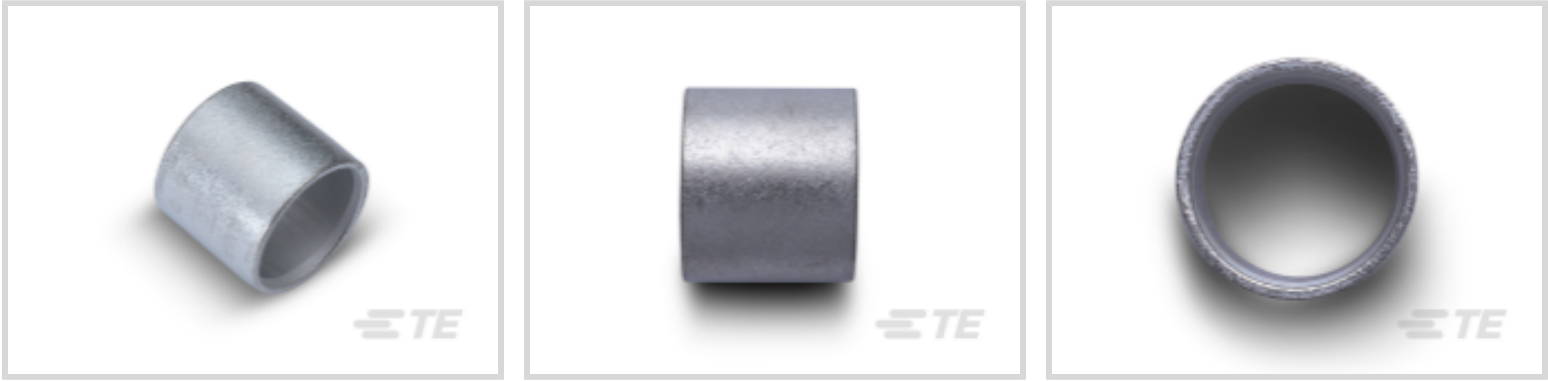




Terminals & Splices > Splices > AMPOWER Parallel Splice



Splice Type: **Parallel Splice**

Wire Size: **52600 - 83700 CMA**

Sealable: **No**

Barrel Inside Diameter: **9.45 mm [.372 in]**

[All AMPOWER Parallel Splice \(14\)](#)

Features

Product Type Features

Splice Accessory Type	Splice
Splice Type	Parallel Splice
Sealable	No
Compatible With Discrete Wire Type	Stranded

Configuration Features

Splice Configuration	Single to Multiple
Compatible With Wire & Cable Type	Discrete Wire

Body Features

Product Weight	4.519 g
Primary Product Color	Gray

Contact Features

	150 µin
Terminal Plating Material	Tin
Contact Base Material	Copper
Barrel Type	Closed

Termination Features

Termination Method to Wire & Cable	Crimp
------------------------------------	-------



Mechanical Attachment

Wire Insulation Support	Without
-------------------------	---------

Dimensions

Wire Size	52600 - 83700 CMA
Barrel Inside Diameter	9.45 mm[.372 in]
Product Length	12.45 mm[.49 in]

Usage Conditions

Insulation Option	Uninsulated
-------------------	-------------

Operation/Application

Compatible With Wire Base Material	Copper
------------------------------------	--------

Industry Standards

Compatible With Agency/Standards Products	UL
Compatible With Approved Standards Products	UL E13288

Packaging Features

Packaging Quantity	50
Packaging Method	Box

Product Compliance

For compliance documentation, visit the product page on TE.com>

EU RoHS Directive 2011/65/EU	Compliant
EU ELV Directive 2000/53/EC	Compliant
China RoHS 2 Directive MIIT Order No 32, 2016	No Restricted Materials Above Threshold
EU REACH Regulation (EC) No. 1907/2006	Current ECHA Candidate List: JAN 2024 (240) Candidate List Declared Against: JAN 2024 (240) Does not contain REACH SVHC
Halogen Content	Low Halogen - Br, Cl, F, I < 900 ppm per homogenous material. Also BFR/CFR/PVC Free
Solder Process Capability	Not applicable for solder process capability

Product Compliance Disclaimer

This information is provided based on reasonable inquiry of our suppliers and represents our current actual knowledge based on the information they provided. This information is subject to change. The part numbers that TE has identified as EU RoHS compliant have a maximum concentration of 0.1% by weight in homogenous materials for lead, hexavalent



chromium, mercury, PBB, PBDE, DBP, BBP, DEHP, DIBP, and 0.01% for cadmium, or qualify for an exemption to these limits as defined in the Annexes of Directive 2011/65/EU (RoHS2). Finished electrical and electronic equipment products will be CE marked as required by Directive 2011/65/EU. Components may not be CE marked. Additionally, the part numbers that TE has identified as EU ELV compliant have a maximum concentration of 0.1% by weight in homogenous materials for lead, hexavalent chromium, and mercury, and 0.01% for cadmium, or qualify for an exemption to these limits as defined in the Annexes of Directive 2000/53/EC (ELV). Regarding the REACH Regulation, the information TE provides on SVHC in articles for this part number is based on the latest European Chemicals Agency (ECHA) 'Guidance on requirements for substances in articles' posted at this URL: <https://echa.europa.eu/guidance-documents/guidance-on-reach>

Compatible Parts




TE Part # 1583094-1
DIE ASSEMBLY,AMPOWER,#2




TE Part # 46765-3
HYP8 AMPOWER 2AWG DIE SET


Customers Also Bought




TE Part # 4-1703818-1
4POS,TAB 2.8X0.8,TAB HSG,ASSY,



TE Part # 36957
SPLICE,SOLIS BUTT 1/0



TE Part # 36929
TERMINAL,SOLIS R 3/0 1/2



TE Part # 30996
DG R 22-16 COMM 22-18 MIL 8

Documents

Product Drawings

SPLICE,AMPOWER PARA 2

English

CAD Files

Customer View Model

ENG_CVM_324442_D.3d_igs.zip

English

Customer View Model

ENG_CVM_324442_D.3d_stp.zip

English

Customer View Model

ENG_CVM_324442_D.2d_dxf.zip

English

3D PDF

English

324442

Splices, Parallel Splice, 2 AWG Wire Size, .372 in [9.45 mm] Barrel Inside Diameter,
52600 - 83700 CMA Wire Size, Copper, Gray



By downloading the CAD file I accept and agree to the [Terms and Conditions](#) of use.

Datasheets & Catalog Pages
AMPOWER Terminals and Splices Flyer
English