



Connectors > Automotive Connectors > Automotive Housings > AMPSEAL 16 Housings



Connector System: **Wire-to-Wire**
Number of Positions: **8**
Connector & Housing Type: **Housing for Male Terminals**
Centerline (Pitch): **4.5 mm [.177 in]**
Sealable: **Yes**

[All AMPSEAL 16 Housings \(224\)](#)

Features

Product Type Features

Mixed & Hybrid Connector	No
Connector Shape	Rectangular
Connector System	Wire-to-Wire
Connector & Housing Type	Housing for Male Terminals
Sealable	Yes
Primary Locking Feature	Integrated in Housing

Configuration Features

Number of Positions	8
Number of Rows	2

Body Features

Primary Product Color	Black
-----------------------	-------

Contact Features

--	--



Contact Size	Size 16
Contact Type	Pin
Mating Pin Diameter	1.5 mm[.059 in]

Mechanical Attachment

Terminal Position Assurance	No
Mating Alignment Type	Polarizing Tab
Mating Alignment	With

Housing Features

Centerline (Pitch)	4.5 mm[.177 in]
--------------------	-----------------

Usage Conditions

Operating Temperature (Max)	70 °C, 75 °C, 81 °C, 90 °C, 100 °C, 105 °C, 110 °C, 120 °C, 125 °C[158 °F][172 °F][176 °F][185 °F][194 °F][212 °F][221 °F][230 °F][248 °F][257 °F]
Operating Temperature Range	-40 - 125 °C[-40 - 257 °F]

Industry Standards

Degree of Protection	IP67
UL Flammability Rating	UL 94HB

Packaging Features

Packaging Quantity	200
Packaging Method	Box

Other

Connector Position Assurance Capable	Yes
--------------------------------------	-----

Product Compliance

For compliance documentation, visit the product page on TE.com>

EU RoHS Directive 2011/65/EU	Compliant
EU ELV Directive 2000/53/EC	Compliant
China RoHS 2 Directive MIIT Order No 32, 2016	No Restricted Materials Above Threshold
EU REACH Regulation (EC) No. 1907/2006	Current ECHA Candidate List: JAN 2024 (240) Candidate List Declared Against: JAN 2024 (240) Does not contain REACH SVHC
Halogen Content	Low Halogen - Br, Cl, F, I < 900 ppm per



homogenous material. Also BFR/CFR/PVC Free

Solder Process Capability

Not applicable for solder process capability

Product Compliance Disclaimer

This information is provided based on reasonable inquiry of our suppliers and represents our current actual knowledge based on the information they provided. This information is subject to change. The part numbers that TE has identified as EU RoHS compliant have a maximum concentration of 0.1% by weight in homogenous materials for lead, hexavalent chromium, mercury, PBB, PBDE, DBP, BBP, DEHP, DIBP, and 0.01% for cadmium, or qualify for an exemption to these limits as defined in the Annexes of Directive 2011/65/EU (RoHS2). Finished electrical and electronic equipment products will be CE marked as required by Directive 2011/65/EU. Components may not be CE marked. Additionally, the part numbers that TE has identified as EU ELV compliant have a maximum concentration of 0.1% by weight in homogenous materials for lead, hexavalent chromium, and mercury, and 0.01% for cadmium, or qualify for an exemption to these limits as defined in the Annexes of Directive 2000/53/EC (ELV). Regarding the REACH Regulation, the information TE provides on SVHC in articles for this part number is based on the latest European Chemicals Agency (ECHA) 'Guidance on requirements for substances in articles' posted at this URL: <https://echa.europa.eu/guidance-documents/guidance-on-reach>

Compatible Parts

TE Part # CAT-AM7801-CH8172
AMPSEAL 16 Housings

TE Part # 776363-1
SEALING PLUG, SZ 16 CAVITY

TE Part # CAT-AM7801-T273
AMPSEAL 16 CONTACTS

TE Part # CAT-AM7801-B128
AMPSEAL 16 Connectors Backshell

TE Part # 1924487-3
MOUNTING CLIP, AMPSEAL 16

Also in the Series | AMPSEAL 16

Automotive Connector Caps & Covers
(1)

Automotive Connector Locks & Position Assurance(2)

Automotive Housings(244)

Automotive Terminals(35)



Connector Backshells(86)



Connector Seals & Cavity Plugs(4)



Data Connectivity Headers(2)



Data Connectivity Housings(3)



Other Automotive Connector Accessories(11)

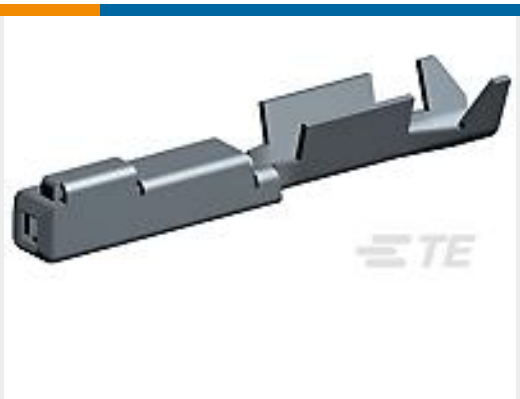
Customers Also Bought



TE Part # 776531-3
AMPSEAL 16 Housings



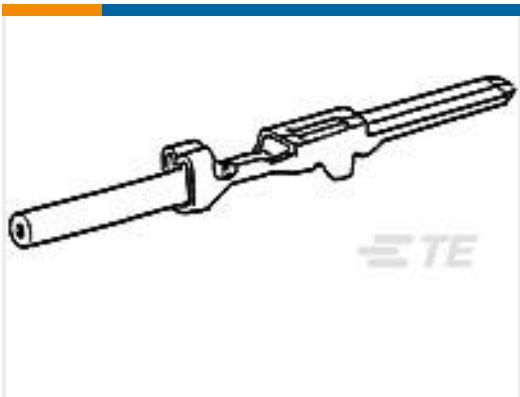
TE Part # 2500006-1
SRC Pwr 60+6AG Female Recp Hsg Assy 2.5



TE Part # 1318332-1
.040 SEALED REC CONT



TE Part # 2292863-3
AS16 BACKSHELL, 6P CAP, NC12, MC



TE Part # 173633-3
070 MLC TAB CONT 24-22 GOLD



TE Part # 172498-1
MIC PLUG HSG 13P (MK II)

Documents

Product Drawings

SEAL CAP HSG 8P, AMPSEAL16 SEA

Japanese

CAD Files

Customer View Model

ENG_CVM_CVM_2040594-5_D.2d_dxf.zip

English

3D PDF



3D

Customer View Model

[ENG_CVM_CVM_2040594-5_D.3d_igs.zip](#)

English

Customer View Model

[ENG_CVM_CVM_2040594-5_D.3d_stp.zip](#)

English

By downloading the CAD file I accept and agree to the [Terms and Conditions](#) of use.

Datasheets & Catalog Pages

[ICT Terminals and Connectors Catalogue](#)

English

Product Specifications

[AMPSEAL SEAL CAP](#)

Japanese

[Product Specification](#)

Japanese