



Connectors > Socket Connectors > IC Sockets > PGA Sockets



IC Socket Type: **mPGA**

Number of Positions: **350**

Contact Mating Area Plating Material: **Gold**

Chip Compatibility: **TI Chip**

Grid Spacing: **1 x 1 mm [ .039 x .039 in ]**

Features

Product Type Features

ZIF Actuator	Screwdriver/Cam
Insertion Force Type	ZIF
Leg Style	Pin Grid Array (PGA)
Chip Compatibility	TI Chip
Connector & Contact Terminates To	Printed Circuit Board

Configuration Features

Number of Positions	350
Grid Spacing	1 x 1 mm[.039 x .039 in]

Body Features

Sleeve Material	Copper Alloy
Sleeve Plating Material	Tin-Lead over Nickel
Frame Style	Open
Actuator Material	Stainless Steel
Connector Profile	Standard

Contact Features



Contact Fabrication	Stamped & Formed
	50 µin
PCB Contact Termination Area Plating Material	Gold
Contact Base Material	Copper Alloy
IC Socket Type	mPGA
Contact Mating Area Plating Material	Gold

Termination Features

Termination Method to Printed Circuit Board	Surface Mount
---	---------------

Housing Features

Housing Material	High Temperature Thermoplastic
Housing Color	Black

Dimensions

Socket Overall Height	4 mm[.157 in]
-----------------------	---------------

Usage Conditions

Operating Temperature Range	-55 - 105 °C[-67 - 221 °F]
-----------------------------	----------------------------

Operation/Application

Assembly Process Feature	Pick and Place Cover, Tape
--------------------------	----------------------------

Identification Marking

Socket Identifier	DMD350
-------------------	--------

Industry Standards

UL Flammability Rating	UL 94V-0
------------------------	----------

Packaging Features

Packaging Quantity	120
--------------------	-----

Product Compliance

For compliance documentation, visit the product page on TE.com>

EU RoHS Directive 2011/65/EU	Compliant
EU ELV Directive 2000/53/EC	Compliant
China RoHS 2 Directive MIIT Order No 32, 2016	No Restricted Materials Above Threshold
EU REACH Regulation (EC) No. 1907/2006	Current ECHA Candidate List: JAN 2024 (240) Candidate List Declared Against: JAN 2024 (240)



	Does not contain REACH SVHC
Halogen Content	Low Halogen - Br, Cl, F, I < 900 ppm per homogenous material. Also BFR/CFR/PVC Free
Solder Process Capability	Reflow solder capable to 260°C

Product Compliance Disclaimer

This information is provided based on reasonable inquiry of our suppliers and represents our current actual knowledge based on the information they provided. This information is subject to change. The part numbers that TE has identified as EU RoHS compliant have a maximum concentration of 0.1% by weight in homogenous materials for lead, hexavalent chromium, mercury, PBB, PBDE, DBP, BBP, DEHP, DIBP, and 0.01% for cadmium, or qualify for an exemption to these limits as defined in the Annexes of Directive 2011/65/EU (RoHS2). Finished electrical and electronic equipment products will be CE marked as required by Directive 2011/65/EU. Components may not be CE marked. Additionally, the part numbers that TE has identified as EU ELV compliant have a maximum concentration of 0.1% by weight in homogenous materials for lead, hexavalent chromium, and mercury, and 0.01% for cadmium, or qualify for an exemption to these limits as defined in the Annexes of Directive 2000/53/EC (ELV). Regarding the REACH Regulation, the information TE provides on SVHC in articles for this part number is based on the latest European Chemicals Agency (ECHA) 'Guidance on requirements for substances in articles' posted at this URL: <https://echa.europa.eu/guidance-documents/guidance-on-reach>

Compatible Parts



TE Part # 1447009-8  
SHIELD FINGER 3525Z



TE Part # 2319757-1  
DUAL LGA,257 POS, DMD SOCKET

Customers Also Bought



TE Part # 2007637-8  
SFP+ assy 2x2 Spring Fingers N



TE Part # 5084616-3  
0.8FH,R13H.5,080,08/Sn,TR,SC



TE Part # D98213-000  
T1K-165051-25-9



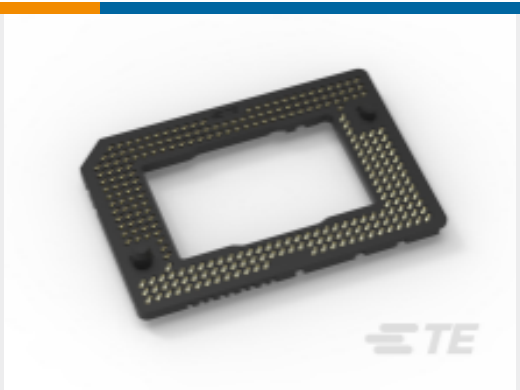
TE Part # 292304-1  
STD USB TYPE B, R/A, T/H



TE Part # 2170088-1  
ZSFP+ Connector,30u"



TE Part # 1674459-4  
Std USB Type A, R/A,T/H, Natural, HighDur



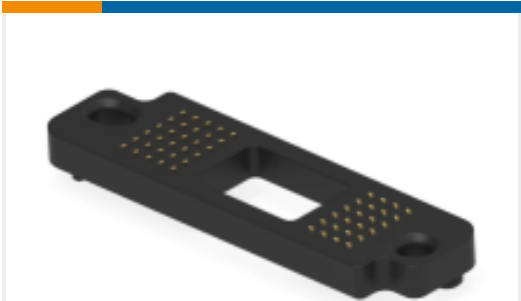
TE Part # 2319757-1  
DUAL LGA,257 POS, DMD SOCKET



TE Part # 1-1437514-3  
322-HCS-5P2-300=REEL ASSY.,500



TE Part # 2377200-1  
DMD 149 SOCKET ASSY, S450, REEL



TE Part # 2377765-1  
DMD 54PIN SOCKET

Documents

Product Drawings

SOCKET ASSY, DMD 350, T/R, G/F

English

CAD Files

3D PDF

3D

Customer View Model

ENG\_CVM\_CVM\_2041549-1\_A.2d\_dxf.zip

English

Customer View Model

ENG\_CVM\_CVM\_2041549-1\_A.3d\_igs.zip

English

Customer View Model

ENG\_CVM\_CVM\_2041549-1\_A.3d\_stp.zip

English

By downloading the CAD file I accept and agree to the Terms and Conditions of use.

Product Specifications

Product Specification

English

Product Specification

English