



Connectors > PCB Connectors > Wire-to-Board Connectors > Wire-to-Board Connector Assemblies & Housings



Connector Product Type: **Housing**
Connector & Housing Type: **Receptacle**
Connector System: **Wire-to-Board**
Number of Positions: **3**
Centerline (Pitch): **5 mm [.197 in]**

Features

Product Type Features

Connector Product Type	Housing
Connector & Housing Type	Receptacle
Connector System	Wire-to-Board
Sealable	No
Connector & Contact Terminates To	Wire & Cable

Configuration Features

Keying & Polarized Rib Location	1a,1b,2a,2b,3a,3b
Number of Positions	3
Number of Rows	1

Body Features

Primary Product Color	Natural
-----------------------	---------

Termination Features

Termination Method to Wire & Cable	Crimp
------------------------------------	-------



Mechanical Attachment

Locking Latch Between Cavity Number	2&3
Panel Mount Feature	Without
PCB Mount Retention	Without
Mating Retention Type	Latch
Mating Retention	With
Connector Mounting Type	Cable Mount (Free-Hanging)

Housing Features

Housing Material	PA 6.6
Centerline (Pitch)	5 mm[.197 in]

Dimensions

Connector Length	25.5 mm[1 in]
Connector Height	13.9 mm[.547 in]

Usage Conditions

Operating Temperature Range	-40 - 105 °C[-40 - 221 °F]
-----------------------------	----------------------------

Operation/Application

Circuit Application	Power & Signal
---------------------	----------------

Industry Standards

RAST Version	None
Glow Wire Rating	Glow Wire
UL Flammability Rating	UL 94V-2

Packaging Features

Packaging Quantity	2000
Packaging Method	Box & Carton

Product Compliance

For compliance documentation, visit the product page on TE.com>

EU RoHS Directive 2011/65/EU	Compliant
EU ELV Directive 2000/53/EC	Compliant
China RoHS 2 Directive MIIT Order No 32, 2016	No Restricted Materials Above Threshold
EU REACH Regulation (EC) No. 1907/2006	Current ECHA Candidate List: JAN 2024 (240)



Candidate List Declared Against: JAN 2024
(240)
Does not contain REACH SVHC

Halogen Content	Not Low Halogen - contains Br or Cl > 900 ppm.
Solder Process Capability	Not applicable for solder process capability

Product Compliance Disclaimer

This information is provided based on reasonable inquiry of our suppliers and represents our current actual knowledge based on the information they provided. This information is subject to change. The part numbers that TE has identified as EU RoHS compliant have a maximum concentration of 0.1% by weight in homogenous materials for lead, hexavalent chromium, mercury, PBB, PBDE, DBP, BBP, DEHP, DIBP, and 0.01% for cadmium, or qualify for an exemption to these limits as defined in the Annexes of Directive 2011/65/EU (RoHS2). Finished electrical and electronic equipment products will be CE marked as required by Directive 2011/65/EU. Components may not be CE marked. Additionally, the part numbers that TE has identified as EU ELV compliant have a maximum concentration of 0.1% by weight in homogenous materials for lead, hexavalent chromium, and mercury, and 0.01% for cadmium, or qualify for an exemption to these limits as defined in the Annexes of Directive 2000/53/EC (ELV). Regarding the REACH Regulation, the information TE provides on SVHC in articles for this part number is based on the latest European Chemicals Agency (ECHA) 'Guidance on requirements for substances in articles' posted at this URL: <https://echa.europa.eu/guidance-documents/guidance-on-reach>

Compatible Parts

 TE Part # 2-1241961-8 STD TIM HOUSING MKII 3POS	 TE Part # 2-1241961-7 STD TIM HOUSING MKII 3POS	 TE Part # 1241961-3 STD TIM HOUSING MKII 2POS	 TE Part # 1241961-1 STD TIM HOUSING MKII 2POS
 TE Part # 9-1241961-8 STANDARD TIMER MARK II HOUSING	 TE Part # 1-1241961-7 HOUSING	 TE Part # 2-1241817-3 STD TIM HOUSING MKII 3POS	 TE Part # 3-1241961-7 STD TIM MK2 HSG 3P
 TE Part # 4-1241961-7 STD TIM MK2 HSG 3P	 TE Part # 5-1241961-8 3POS STD-TIMER HOUSING PITCH5 MK II	 TE Part # 8-1241961-8 STD TIM HOUSING MKII 3POS	 TE Part # 8-969484-7 STD TIM MK2 GEH 3P



Also in the Series | RAST 5 IDC Connectors



Automotive Terminals(8)



Connector Contacts(14)



Crimp Terminal Housings(41)



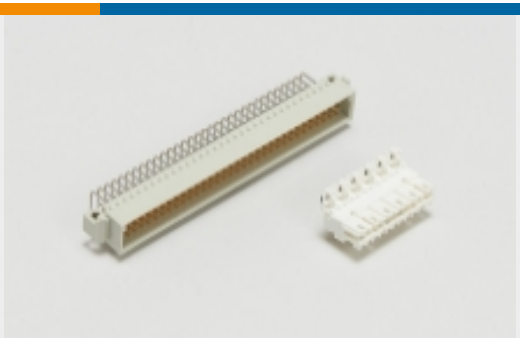
Insertion & Extraction Tools(1)



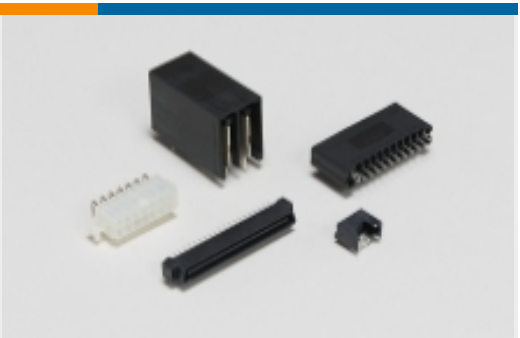
PCB Headers & Receptacles(417)



Rectangular Connector Housings(1)



Standard Edge Connectors(33)



Standard Rectangular Connectors(63)



Wire-to-Board Connector Assemblies & Housings(213)

Customers Also Bought



TE Part # 964203-5
STD PW TIMER CONTACT



TE Part # 9-1241961-2
STD TIM HOUSING MKII 2POS



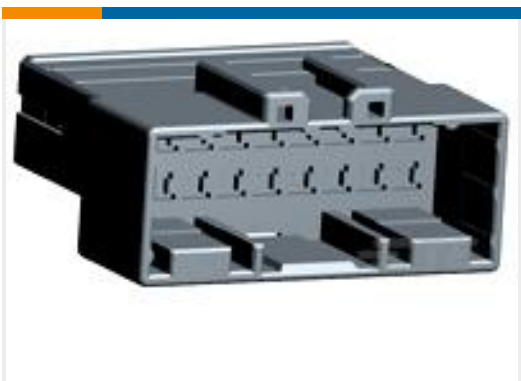
TE Part # 964204-1
STD-POW-TIM KONTAKT



TE Part # 1-1534126-1
LEAVYSEAL Housings



TE Part # 2292798-1
AS16 BACKSHELL, 3P PLUG,
SMOOTH EXIT, MC



TE Part # 936213-2
090III 18P CAP ASSY BLK



TE Part # 1534077-3
MULTIFIT MK2ASSY 3P,IR



TE Part # 1674311-8
0.64 III RCPT NON SEALED Au



Documents

Product Drawings

STANDARD TIMER HOUSING MK II

English

CAD Files

3D PDF

3D

Customer View Model

ENG_CVM_CVM_9-1241961-9_C.2d_dxf.zip

English

Customer View Model

ENG_CVM_CVM_9-1241961-9_C.3d_igs.zip

English

Customer View Model

ENG_CVM_CVM_9-1241961-9_C.3d_stp.zip

English

By downloading the CAD file I accept and agree to the [Terms and Conditions](#) of use.

Product Specifications

Product Specification

German