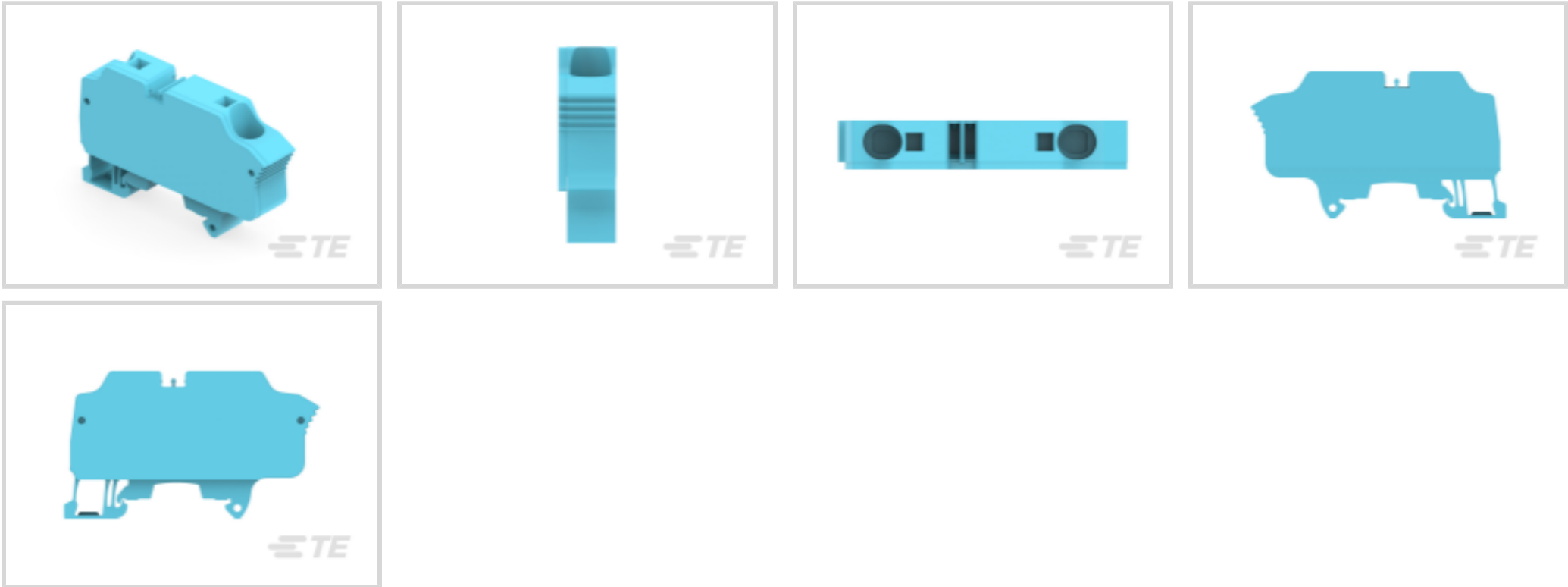




Connectors > Terminal Blocks & Strips > Modular Terminal Blocks



Block Function: **Feed-Through**  
Modular Terminal Block Product Type: **PI-Spring Terminal Block**  
Primary Product Color: **Blue & Gray**  
Product Spacing: **14 mm [ .551 in ]**  
Number of Positions: **2**

Features

Product Type Features

Modular Terminal Block Product Type	PI-Spring Terminal Block
-------------------------------------	--------------------------

Configuration Features

Gauge Type	A7 & 6.3 mm Dia.
Number of Levels	1
Block Function	Feed-Through
Number of Positions	2

Electrical Characteristics

Operating Voltage Rating (UL & CSA) (Max) - Main Circuit	1000 V
Impulse Withstanding Voltage Rating (IEC)	8000 V
Current Rating (CSA)	75 A
Power Loss	2.4 W
Dielectric Withstanding Voltage (Max)	2200 V
Short-Time Withstanding Current Rating @ 1s	1920 A
Current Rating (UL)	75 A



Current Rating (IEC)	76 A
----------------------	------

Body Features

Product Weight	36.56 g[1.439 oz]
Primary Product Color	Blue & Gray

Mechanical Attachment

DIN Rail Mounting Type	TH35-15, TH35-7.5
Connector Mounting Type	DIN Rail

Housing Features

Housing Material	Polyamide
------------------	-----------

Dimensions

Main Circuit Capacity - 1 Rigid Stranded Conductor per Spring Clamp	.5 - 25 mm²
Main Circuit Capacity - Twin Ferrule per Spring Clamp	.5 - 6 mm²
Wire Stripping Length	15 mm[.591 in]
Main Circuit Capacity - 1 Non-Insulated Ferrule per Spring Clamp	.5 - 16 mm²
Main Circuit Capacity - 1 Insulated Ferrule per Spring Clamp	20 - 6 AWG
Main Circuit Capacity - 1 Flexible Conductor per Spring Clamp	.5 - 16 mm²
Tool Size	4 mm[.157 in]
Product Depth	82.5 mm
Product Length	82.5 mm[3.25 in]
Product Height	47.5 mm
Product Spacing	14 mm[.551 in]

Usage Conditions

Installation Temperature Range	-5 - 40 °C[23 - 104 °F]
Operating Temperature Range	-55 - 110 °C[-67 - 230 °F]

Industry Standards

IP Rating	IP20
UL Flammability Rating	UL 94V-0

Product Compliance

For compliance documentation, visit the product page on [TE.com](#)>

EU RoHS Directive 2011/65/EU	Compliant
------------------------------	-----------

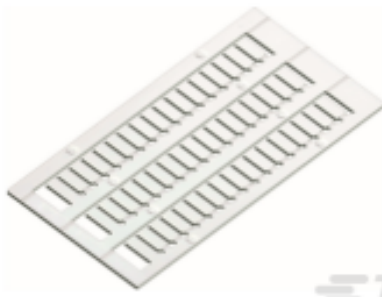


EU ELV Directive 2000/53/EC	Compliant
China RoHS 2 Directive MIIT Order No 32, 2016	No Restricted Materials Above Threshold
EU REACH Regulation (EC) No. 1907/2006	Current ECHA Candidate List: JAN 2024 (240) Candidate List Declared Against: JAN 2024 (240) Does not contain REACH SVHC
Halogen Content	Low Halogen - Br, Cl, F, I < 900 ppm per homogenous material. Also BFR/CFR/PVC Free
Solder Process Capability	Not reviewed for solder process capability


Product Compliance Disclaimer

This information is provided based on reasonable inquiry of our suppliers and represents our current actual knowledge based on the information they provided. This information is subject to change. The part numbers that TE has identified as EU RoHS compliant have a maximum concentration of 0.1% by weight in homogenous materials for lead, hexavalent chromium, mercury, PBB, PBDE, DBP, BBP, DEHP, DIBP, and 0.01% for cadmium, or qualify for an exemption to these limits as defined in the Annexes of Directive 2011/65/EU (RoHS2). Finished electrical and electronic equipment products will be CE marked as required by Directive 2011/65/EU. Components may not be CE marked. Additionally, the part numbers that TE has identified as EU ELV compliant have a maximum concentration of 0.1% by weight in homogenous materials for lead, hexavalent chromium, and mercury, and 0.01% for cadmium, or qualify for an exemption to these limits as defined in the Annexes of Directive 2000/53/EC (ELV). Regarding the REACH Regulation, the information TE provides on SVHC in articles for this part number is based on the latest European Chemicals Agency (ECHA) 'Guidance on requirements for substances in articles' posted at this URL: <https://echa.europa.eu/guidance-documents/guidance-on-reach>

Compatible Parts



TE Part # 1SNK160000R0000  
MC812



TE Part # 1SNK900002R0000  
BAZ1




TE Part # 1SNK900107R0000  
CS-R3



TE Part # 1SNK900205R0000  
TP4



TE Part # 1SNK169999R0000  
MC812PA

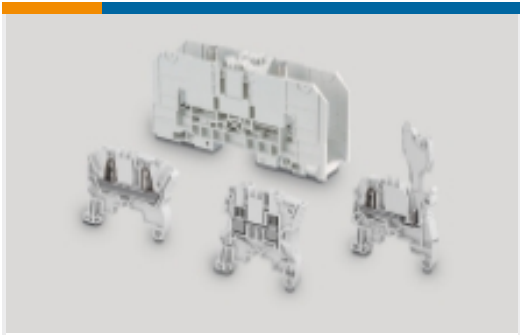


TE Part # 1SNK900203R0000  
TP2



TE Part # 1SNK900611R0000  
UMH

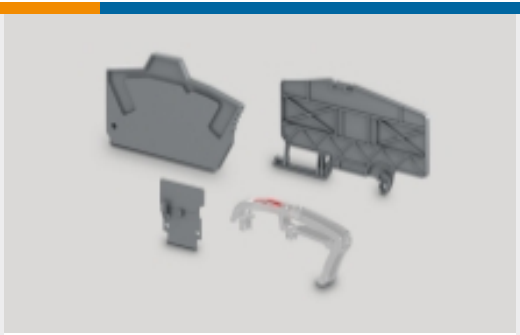
Also in the Series | ENTRELEC SNK



Modular Terminal Blocks(320)



Terminal Block & Strip Conducting Accessories(67)



Terminal Block & Strip Insulating Accessories(31)

Customers Also Bought



TE Part # DTM06-12SC  
DEUTSCH DTM Housings



TE Part # 1SNK705061R0000  
ZK2.5-GN



TE Part # 1SNK916303R0000  
JB16-3



TE Part # 1SNK506021R0000  
ZS6-3S-BL



TE Part # 1SNK706011R0000  
ZK4-3P



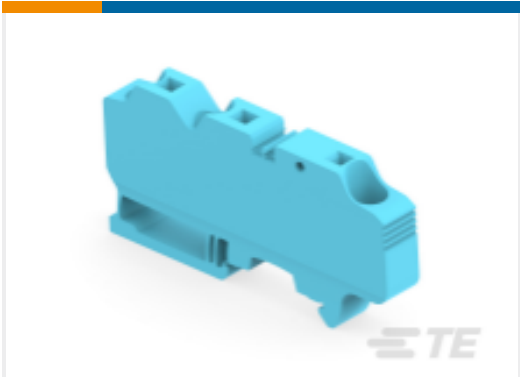
TE Part # 1SNK706032R0000  
ZK4-4P-OR



TE Part # 1SNK706062R0000  
ZK4-RD



TE Part # 1SNK706066R0000  
ZK4-BK



TE Part # 1SNK712067R0000  
ZK16-3P-PV-BL

Documents

CAD Files

Customer View Model

ENG\_CVM\_CVM\_1SNK712065R0000\_A2.3d\_igs.zip

English

Customer View Model

ENG\_CVM\_CVM\_1SNK712065R0000\_A2.3d\_stp.zip

English

Customer View Model

ENG\_CVM\_CVM\_1SNK712065R0000\_A2.2d\_dxf.zip

1SNK712065R0000

Modular Terminal Blocks, Feed-Through, PI-Spring Terminal Block, Blue & Gray,  
Product Spacing .551 in [14 mm], 2 Position, DIN Rail, ENTRELEC SNK



English

3D PDF

3D

By downloading the CAD file I accept and agree to the [Terms and Conditions](#) of use.

Datasheets & Catalog Pages

ENTRELEC Terminal Block - Master Catalog

ENTRELEC Terminal Block - Master Catalog

English

ZK16-PV-BL

English

SNK SERIES TERMINAL BLOCKS

English

Agency Approvals

UL

English