

# UK 3-TWIN BU - Feed-through terminal block



3002416

<https://www.phoenixcontact.com/us/products/3002416>

Please be informed that the data shown in this PDF document is generated from our online catalog. Please find the complete data in the user documentation. Our general terms of use for downloads are valid.



1-level terminal block with double connection on one side, cross section: 0.2 - 2.5 mm<sup>2</sup>, AWG: 30 - 12, width: 5.2 mm, color: blue

## Your advantages

- These twin modular terminal blocks are designed for the basic task of potential branching
- Universal foot for mounting on NS 35.. or NS 32... DIN rails
- Two independent conductor connections can be used on the control cabinet side
- Easy connection of different types of conductors with different cross sections
- Can be bridged in the terminal center, even with neighboring feed-through terminal blocks aligned

## Commercial data

Item number	3002416
Packing unit	50 pc
Minimum order quantity	50 pc
Sales key	BE12
Product key	BE1212
Catalog page	Page 466 (C-1-2019)
GTIN	4017918090258
Weight per piece (including packing)	10.56 g
Weight per piece (excluding packing)	10.56 g
Customs tariff number	85369010
Country of origin	TR

# UK 3-TWIN BU - Feed-through terminal block



3002416

<https://www.phoenixcontact.com/us/products/3002416>

## Technical data

### Product properties

Product type	Multi-conductor terminal block
Number of connections	3
Number of rows	2
Potentials	1

### Insulation characteristics

Overvoltage category	III
Degree of pollution	3

### Electrical properties

Rated surge voltage	6 kV
Maximum power dissipation for nominal condition	0.77 W

### Connection data

Number of connections per level	3
Nominal cross section	2.5 mm <sup>2</sup>

#### 1 level

Screw thread	M3
Tightening torque	0.5 ... 0.6 Nm
Stripping length	8 mm
Connection in acc. with standard	IEC 60947-7-1
Conductor cross section rigid	0.2 mm <sup>2</sup> ... 2.5 mm <sup>2</sup>
Cross section AWG	24 ... 14 (converted acc. to IEC)
Conductor cross section flexible	0.2 mm <sup>2</sup> ... 2.5 mm <sup>2</sup>
Conductor cross section, flexible [AWG]	24 ... 14 (converted acc. to IEC)
Conductor cross-section flexible (ferrule without plastic sleeve)	0.25 mm <sup>2</sup> ... 1.5 mm <sup>2</sup>
Flexible conductor cross section (ferrule with plastic sleeve)	0.25 mm <sup>2</sup> ... 1 mm <sup>2</sup>
Cross-section with insertion bridge, rigid	2.5 mm <sup>2</sup>
Cross-section with insertion bridge, flexible	2.5 mm <sup>2</sup>
2 conductors with same cross section, solid	0.2 mm <sup>2</sup> ... 0.5 mm <sup>2</sup>
2 conductors with same cross section, flexible	0.2 mm <sup>2</sup> ... 0.5 mm <sup>2</sup>
2 conductors with same cross section, flexible, with ferrule without plastic sleeve	0.25 mm <sup>2</sup> ... 0.5 mm <sup>2</sup>
2 conductors with the same cross section, flexible, with TWIN ferrule with plastic sleeve	0.5 mm <sup>2</sup> ... 0.75 mm <sup>2</sup>
Nominal current	24 A (with a 2.5 mm <sup>2</sup> conductor cross section)
Maximum load current	24 A (at a conductor cross section of 2.5 mm <sup>2</sup> ; it must not be exceeded by the total current.)
Nominal voltage	400 V
Nominal cross section	2.5 mm <sup>2</sup>

# UK 3-TWIN BU - Feed-through terminal block



3002416

<https://www.phoenixcontact.com/us/products/3002416>

## Dimensions

Width	5.2 mm
End cover width	2 mm
Height	50.5 mm
Depth on NS 32	52 mm
Depth on NS 35/7,5	47 mm
Depth on NS 35/15	54.5 mm

## Material specifications

Color	blue
Flammability rating according to UL 94	V2
Insulating material group	I
Insulating material	PA
Temperature index of insulation material (DIN EN 60216-1 (VDE 0304-21))	125 °C
Relative insulation material temperature index (Elec., UL 746 B)	125 °C

## Electrical tests

### Surge voltage test

Test voltage setpoint	7.3 kV
Result	Test passed

### Temperature-rise test

Requirement temperature-rise test	Increase in temperature $\leq 45$ K
Result	Test passed
Short-time withstand current 2.5 mm <sup>2</sup>	0.3 kA
Result	Test passed

### Power-frequency withstand voltage

Test voltage setpoint	1.89 kV
Result	Test passed

## Mechanical properties

### Mechanical data

Open side panel	Yes
-----------------	-----

## Mechanical tests

### Mechanical strength

Result	Test passed
--------	-------------

### Attachment on the carrier

DIN rail/fixing support	NS 32/NS 35
Test force setpoint	1 N
Result	Test passed

# UK 3-TWIN BU - Feed-through terminal block



3002416

<https://www.phoenixcontact.com/us/products/3002416>

## Test for conductor damage and slackening

Rotation speed	10 rpm
Revolutions	135
Conductor cross section/weight	0.2 mm <sup>2</sup> / 0.2 kg
	0.5 mm <sup>2</sup> / 0.3 kg
	2.5 mm <sup>2</sup> / 0.7 kg
Result	Test passed

## Environmental and real-life conditions

### Needle-flame test

Time of exposure	30 s
Result	Test passed

### Ambient conditions

Ambient temperature (operation)	-60 °C ... 110 °C (Operating temperature range incl. self-heating; for max. short-term operating temperature, see RTI Elec.)
Ambient temperature (storage/transport)	-25 °C ... 60 °C (for a short time, not exceeding 24 h, -60 °C to +70 °C)
Ambient temperature (assembly)	-5 °C ... 70 °C
Ambient temperature (actuation)	-5 °C ... 70 °C
Permissible humidity (operation)	20 % ... 90 %
Permissible humidity (storage/transport)	30 % ... 70 %

## Standards and regulations

Connection in acc. with standard	IEC 60947-7-1
----------------------------------	---------------

## Mounting

Mounting type	NS 35/7,5
	NS 35/15
	NS 32

# UK 3-TWIN BU - Feed-through terminal block



3002416

<https://www.phoenixcontact.com/us/products/3002416>

## Drawings

Circuit diagram



# UK 3-TWIN BU - Feed-through terminal block



3002416

<https://www.phoenixcontact.com/us/products/3002416>

## Approvals

To download certificates, visit the product detail page: <https://www.phoenixcontact.com/us/products/3002416>

### DNV

Approval ID: TAE00001CT



### CSA

Approval ID: 13631

	Nominal voltage $U_N$	Nominal current $I_N$	Cross section AWG	Cross section $\text{mm}^2$
	300 V	20 A	28 - 12	-



### IECEE CB Scheme

Approval ID: NL-65621

	Nominal voltage $U_N$	Nominal current $I_N$	Cross section AWG	Cross section $\text{mm}^2$
	24 V	400 A	-	- 2.5



### EAC

Approval ID: RU C-DE.BL08.B.00534



### cULus Recognized

Approval ID: E60425

	Nominal voltage $U_N$	Nominal current $I_N$	Cross section AWG	Cross section $\text{mm}^2$
Use group B	300 V	20 A	30 - 12	-
Use group C	150 V	20 A	30 - 12	-
Use group F	400 V	20 A	30 - 12	-
Use group D	300 V	10 A	30 - 12	-



### KEMA-KEUR

Approval ID: 2191242.01

	Nominal voltage $U_N$	Nominal current $I_N$	Cross section AWG	Cross section $\text{mm}^2$
	400 V	24 A	-	-



### KEMA-KEUR

Approval ID: 71-119849

	Nominal voltage $U_N$	Nominal current $I_N$	Cross section AWG	Cross section $\text{mm}^2$
--	-----------------------	-----------------------	-------------------	-----------------------------

# UK 3-TWIN BU - Feed-through terminal block



3002416

<https://www.phoenixcontact.com/us/products/3002416>

	400 V	24 A	-	-
--	-------	------	---	---

# UK 3-TWIN BU - Feed-through terminal block



3002416

<https://www.phoenixcontact.com/us/products/3002416>

## Classifications

### ECLASS

ECLASS-11.0	27141120
ECLASS-13.0	27250101

### ETIM

ETIM 8.0	EC000897
----------	----------

### UNSPSC

UNSPSC 21.0	39121400
-------------	----------



Environmental product compliance

EU RoHS	
Fulfills EU RoHS substance requirements	Yes
Exemption	6(c)
China RoHS	
Environment friendly use period (EFUP)	EFUP-50
	An article-related China RoHS declaration table can be found in the download area for the respective article under "Manufacturer declaration". For all articles with EFUP-E, no China RoHS declaration table issued and required.
EU REACH SVHC	
REACH candidate substance (CAS No.)	Lead(CAS: 7439-92-1)

# UK 3-TWIN BU - Feed-through terminal block



3002416

<https://www.phoenixcontact.com/us/products/3002416>

## Accessories

**i** Note: Applying some accessories below might limit this product.

### FBRI 10-5 N - Fixed bridge

2770642

<https://www.phoenixcontact.com/us/products/2770642>



Fixed bridge, pitch: 5.2 mm, number of positions: 10, color: silver

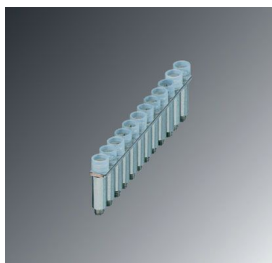
**i** Max. current carrying capacity: 24 A

---

### FBRI 12-5 N - Fixed bridge

3000434

<https://www.phoenixcontact.com/us/products/3000434>



Fixed bridge, number of positions: 12, color: silver

# UK 3-TWIN BU - Feed-through terminal block

3002416

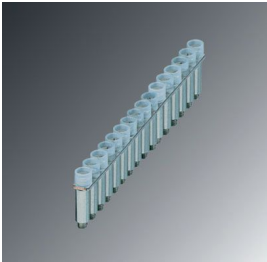
<https://www.phoenixcontact.com/us/products/3002416>



## FBRI 16-5 N - Fixed bridge

3000476

<https://www.phoenixcontact.com/us/products/3000476>



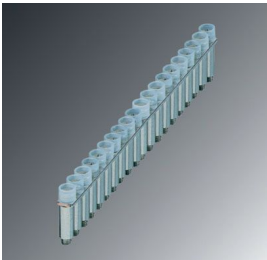
Fixed bridge, number of positions: 16, color: silver

---

## FBRI 20-5 N - Fixed bridge

3000515

<https://www.phoenixcontact.com/us/products/3000515>



Fixed bridge, pitch: 5 mm, number of positions: 20, color: silver

# UK 3-TWIN BU - Feed-through terminal block

3002416

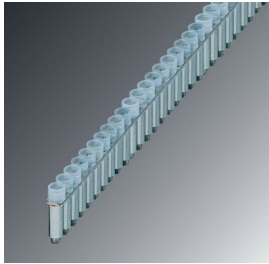
<https://www.phoenixcontact.com/us/products/3002416>



## FBRI 40-5 N - Fixed bridge

3006823

<https://www.phoenixcontact.com/us/products/3006823>



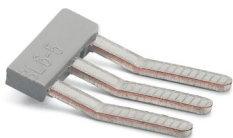
Fixed bridge, number of positions: 40, color: silver

---


## EBL 3- 5 - Insertion bridge

2303158

<https://www.phoenixcontact.com/us/products/2303158>



Insertion bridge, pitch: 5.2 mm, number of positions: 3, color: gray

 Max. current carrying capacity: 24 A

# UK 3-TWIN BU - Feed-through terminal block



3002416

<https://www.phoenixcontact.com/us/products/3002416>

## EBL 2- 5 - Insertion bridge

2303145

<https://www.phoenixcontact.com/us/products/2303145>

Insertion bridge, pitch: 5.2 mm, number of positions: 2, color: gray



 Max. current carrying capacity: 24 A

---

## EBL 10- 5 - Insertion bridge

2303132

<https://www.phoenixcontact.com/us/products/2303132>

Insertion bridge, pitch: 5.2 mm, number of positions: 10, color: gray



 Max. current carrying capacity: 24 A

---

# UK 3-TWIN BU - Feed-through terminal block



3002416

<https://www.phoenixcontact.com/us/products/3002416>

## USBRJ 2-7 - Switching jumper

2305538

<https://www.phoenixcontact.com/us/products/2305538>



Switching jumper, number of positions: 2, color: silver

---

## USBR 2-7 - Switching jumper

2303239

<https://www.phoenixcontact.com/us/products/2303239>



Switching jumper, pitch: 7 mm, number of positions: 2, color: silver

# UK 3-TWIN BU - Feed-through terminal block

3002416

<https://www.phoenixcontact.com/us/products/3002416>



## FBR 10-5-EX - Fixed bridge

2303226

<https://www.phoenixcontact.com/us/products/2303226>

Fixed bridge, pitch: 5 mm, number of positions: 10, color: silver



 Max. current carrying capacity: 24 A

---


## FBR 2-5-EX - Fixed bridge

0716129

<https://www.phoenixcontact.com/us/products/0716129>

Fixed bridge, number of positions: 2, color: silver



 Max. current carrying capacity: 24 A

## UK 3-TWIN BU - Feed-through terminal block

3002416

<https://www.phoenixcontact.com/us/products/3002416>



## FBR 80-5-EX - Fixed bridge

3000942

<https://www.phoenixcontact.com/us/products/3000942>



Fixed bridge, pitch: 5 mm, number of positions: 80, color: silver

 Max. current carrying capacity: 24 A

---

## D-UK 5-TWIN BU - End cover

1923050

<https://www.phoenixcontact.com/us/products/1923050>



End cover, depth: 47 mm, width: 2 mm, height: 50.5 mm, color: blue



## UK 3-TWIN BU - Feed-through terminal block

3002416

<https://www.phoenixcontact.com/us/products/3002416>



## D-UK 5-TWIN - End cover

1923034

<https://www.phoenixcontact.com/us/products/1923034>

End cover, depth: 36 mm, width: 2 mm, height: 50 mm, color: gray



---

## WS 4- 5 - Warning label

0805344

<https://www.phoenixcontact.com/us/products/0805344>

Warning plate, with 2 plastic screws, across 4 terminal blocks, pitch 5 mm



# UK 3-TWIN BU - Feed-through terminal block



3002416

<https://www.phoenixcontact.com/us/products/3002416>

## WS 3- 5 - Warning label

0805357

<https://www.phoenixcontact.com/us/products/0805357>

Warning plate, with 2 plastic screws, across 3 terminal blocks, pitch 5 mm



---

## WS 5- 5 - Warning label

0805331

<https://www.phoenixcontact.com/us/products/0805331>

Warning plate, with 2 plastic screws, across 5 terminal blocks, pitch 5 mm



# UK 3-TWIN BU - Feed-through terminal block



3002416

<https://www.phoenixcontact.com/us/products/3002416>

## FB-150 METER - Fixed bridge

0201595

<https://www.phoenixcontact.com/us/products/0201595>



Cross connection rail, for fixed bridging of identical inputs and outputs, made of Cu, nickel-plated, 1 m long

---

## KSS 5 - Short-circuit connector

2303543

<https://www.phoenixcontact.com/us/products/2303543>



Short-circuit connector, pitch: 5 mm, number of positions: 2, color: black

# UK 3-TWIN BU - Feed-through terminal block

3002416

<https://www.phoenixcontact.com/us/products/3002416>



## PS-UK 2,5 B/Z-5 - Test plug

3001226

<https://www.phoenixcontact.com/us/products/3001226>

Test plug, number of positions: 1, color: red



---

## PS-UK 2,5 B/E - Test plug

3001132

<https://www.phoenixcontact.com/us/products/3001132>

Test plug, number of positions: 1, color: red



# UK 3-TWIN BU - Feed-through terminal block

3002416

<https://www.phoenixcontact.com/us/products/3002416>



## RPS - Reducing plug

0201647

<https://www.phoenixcontact.com/us/products/0201647>

Reducing plug, number of positions: 1, color: gray



---

## TS-K - Separating plate

1302215

<https://www.phoenixcontact.com/us/products/1302215>

Separating plate, depth: 22 mm, width: 0.5 mm, height: 22 mm, color: gray



## UK 3-TWIN BU - Feed-through terminal block

3002416

<https://www.phoenixcontact.com/us/products/3002416>



## SBS 5:UNBEDRUCKT - Marker card

1007219

<https://www.phoenixcontact.com/us/products/1007219>



Marker card, Card, white, unlabeled, can be labeled with: Marker pen, perforated, mounting type: snap into tall marker groove, snap into flat marker groove, for terminal block width: 5 mm, lettering field size: 6 x 5.1 mm, Number of individual labels: 250

---

## NS 32 PERF 2000MM-VPE 10 - DIN rail perforated

1201002

<https://www.phoenixcontact.com/us/products/1201002>



DIN rail perforated, Pack of 10 (20 m), acc. to EN 60715, material: Steel, galvanized, passivated with a thick layer, G profile, color: silver

# UK 3-TWIN BU - Feed-through terminal block

3002416

<https://www.phoenixcontact.com/us/products/3002416>



## NS 32 UNPERF 2000MM-VPE 10 - DIN rail, unperforated

1201015

<https://www.phoenixcontact.com/us/products/1201015>



DIN rail, unperforated, Pack of 10 (20 m), acc. to EN 60715, material: Steel, galvanized, passivated with a thick layer, G profile, color: silver

---

## NS 35/ 7,5 PERF 2000MM - DIN rail perforated

0801733

<https://www.phoenixcontact.com/us/products/0801733>



DIN rail perforated, Pack of 25 (50 m), acc. to EN 60715, material: Steel, galvanized, passivated with a thick layer, Standard profile, color: silver

# UK 3-TWIN BU - Feed-through terminal block

3002416

<https://www.phoenixcontact.com/us/products/3002416>



## NS 35/ 7,5 UNPERF 2000MM - DIN rail, unperforated

0801681

<https://www.phoenixcontact.com/us/products/0801681>



DIN rail, unperforated, Pack of 25 (50 m), acc. to EN 60715, material: Steel, galvanized, passivated with a thick layer, Standard profile, color: silver

---

## NS 35/ 7,5 WH PERF 2000MM - DIN rail perforated

1204119

<https://www.phoenixcontact.com/us/products/1204119>



DIN rail perforated, Pack of 25 (50 m), acc. to EN 60715, material: Steel, Galvanized, white passivated, Standard profile, color: silver



# UK 3-TWIN BU - Feed-through terminal block

3002416

<https://www.phoenixcontact.com/us/products/3002416>



## NS 35/ 7,5 WH UNPERF 2000MM-VPE 10 - DIN rail, unperforated

1204122

<https://www.phoenixcontact.com/us/products/1204122>



DIN rail, unperforated, Pack of 10 (20 m), acc. to EN 60715, material: Steel, Galvanized, white passivated, Standard profile, color: silver

---

## NS 35/ 7,5 AL UNPERF 2000MM - DIN rail, unperforated

0801704

<https://www.phoenixcontact.com/us/products/0801704>



DIN rail, unperforated, Pack of 25 (50 m), acc. to EN 60715, material: Aluminum, uncoated, Standard profile, color: silver

# UK 3-TWIN BU - Feed-through terminal block

3002416

<https://www.phoenixcontact.com/us/products/3002416>



## NS 35/ 7,5 ZN PERF 2000MM - DIN rail perforated

1206421

<https://www.phoenixcontact.com/us/products/1206421>



DIN rail perforated, Pack of 25 (50 m), acc. to EN 60715, material: Steel, galvanized, Standard profile, color: silver

---

## NS 35/ 7,5 ZN UNPERF 2000MM - DIN rail, unperforated

1206434

<https://www.phoenixcontact.com/us/products/1206434>



DIN rail, unperforated, Pack of 25 (50 m), acc. to EN 60715, material: Steel, galvanized, Standard profile, color: silver

# UK 3-TWIN BU - Feed-through terminal block

3002416

<https://www.phoenixcontact.com/us/products/3002416>



## NS 35/ 7,5 CU UNPERF 2000MM-VPE 10 - DIN rail, unperforated

0801762

<https://www.phoenixcontact.com/us/products/0801762>



DIN rail, unperforated, Pack of 10 (20 m), acc. to EN 60715, material: Copper, uncoated, Standard profile, color: copper-colored

---

## NS 35/ 7,5 CAP - End cap

1206560

<https://www.phoenixcontact.com/us/products/1206560>

DIN rail end piece, for DIN rail NS 35/7.5



# UK 3-TWIN BU - Feed-through terminal block



3002416

<https://www.phoenixcontact.com/us/products/3002416>

## NS 35/15 PERF 2000MM - DIN rail perforated

1201730

<https://www.phoenixcontact.com/us/products/1201730>



DIN rail perforated, Pack of 25 (50 m), similar to EN 60715, material: Steel, galvanized, passivated with a thick layer, Standard profile, color: silver

---

## NS 35/15 UNPERF 2000MM - DIN rail, unperforated

1201714

<https://www.phoenixcontact.com/us/products/1201714>



DIN rail, unperforated, Pack of 25 (50 m), similar to EN 60715, material: Steel, galvanized, passivated with a thick layer, Standard profile, color: silver

# UK 3-TWIN BU - Feed-through terminal block



3002416

<https://www.phoenixcontact.com/us/products/3002416>

## NS 35/15 WH PERF 2000MM - DIN rail perforated

0806602

<https://www.phoenixcontact.com/us/products/0806602>



DIN rail perforated, Pack of 25 (50 m), similar to EN 60715, material: Steel, Galvanized, white passivated, Standard profile, color: white

---

## NS 35/15 WH UNPERF 2000MM-VPE 10 - DIN rail, unperforated

1204135

<https://www.phoenixcontact.com/us/products/1204135>



DIN rail, unperforated, Pack of 10 (20 m), similar to EN 60715, material: Steel, Galvanized, white passivated, Standard profile, color: silver

# UK 3-TWIN BU - Feed-through terminal block

3002416

<https://www.phoenixcontact.com/us/products/3002416>



## NS 35/15 AL UNPERF 2000MM - DIN rail, unperforated

1201756

<https://www.phoenixcontact.com/us/products/1201756>



DIN rail, unperforated, similar to EN 60715, material: Aluminum, uncoated, Standard profile, color: silver

---

## NS 35/15 ZN PERF 2000MM - DIN rail perforated

1206599

<https://www.phoenixcontact.com/us/products/1206599>



DIN rail perforated, Pack of 25 (50 m), similar to EN 60715, material: Steel, galvanized, Standard profile, color: silver

# UK 3-TWIN BU - Feed-through terminal block

3002416

<https://www.phoenixcontact.com/us/products/3002416>



## NS 35/15 ZN UNPERF 2000MM - DIN rail, unperforated

1206586

<https://www.phoenixcontact.com/us/products/1206586>



DIN rail, unperforated, Pack of 25 (50 m), similar to EN 60715, material: Steel, galvanized, Standard profile, color: silver

---

## NS 35/15 CU UNPERF 2000MM-VPE 10 - DIN rail, unperforated

1201895

<https://www.phoenixcontact.com/us/products/1201895>



DIN rail, unperforated, Pack of 10 (20 m), similar to EN 60715, material: Copper, uncoated, Standard profile, color: copper-colored

# UK 3-TWIN BU - Feed-through terminal block

3002416

<https://www.phoenixcontact.com/us/products/3002416>



## NS 35/15 CAP - End cap

1206573

<https://www.phoenixcontact.com/us/products/1206573>

DIN rail end piece, for DIN rail NS 35/15



---

## NS 35/15-2,3 UNPERF 2000MM-VPE 10 - DIN rail, unperforated

1201798

<https://www.phoenixcontact.com/us/products/1201798>



DIN rail, unperforated, Pack of 10 (20 m), acc. to EN 60715, material: Steel, galvanized, passivated with a thick layer, Standard profile 2.3 mm, color: silver



# UK 3-TWIN BU - Feed-through terminal block



3002416

<https://www.phoenixcontact.com/us/products/3002416>

## ZB 5 :UNBEDRUCKT - Zack marker strip

1050004

<https://www.phoenixcontact.com/us/products/1050004>



Zack marker strip, Strip, white, unlabeled, can be labeled with: PLOTMARK, CMS-P1-PLOTTER, mounting type: snapped, for terminal block width: 5.2 mm, lettering field size: 5.1 x 10.5 mm, Number of individual labels: 10

---

## ZB 5 CUS - Zack marker strip

0824962

<https://www.phoenixcontact.com/us/products/0824962>



Zack marker strip, can be ordered: Strip, white, labeled according to customer specifications, mounting type: snap into tall marker groove, for terminal block width: 5.2 mm, lettering field size: 5.15 x 10.5 mm, Number of individual labels: 10

# UK 3-TWIN BU - Feed-through terminal block



3002416

<https://www.phoenixcontact.com/us/products/3002416>

## ZB 5,LGS:FORTL.ZAHLEN - Zack marker strip

1050017

<https://www.phoenixcontact.com/us/products/1050017>



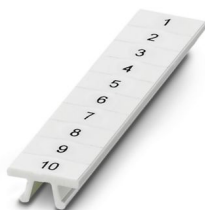
Zack marker strip, Strip, white, labeled, printed horizontally: consecutive numbers 1 ... 10, 11 ... 20, etc. up to 491 ... 500, mounting type: snapped, for terminal block width: 5.2 mm, lettering field size: 5.15 x 10.5 mm, Number of individual labels: 10

---

## ZB 5,QR:FORTL.ZAHLEN - Zack marker strip

1050020

<https://www.phoenixcontact.com/us/products/1050020>



Zack marker strip, white, Printed vertically: consecutive numbers 1 ... 10, 11 ... 20, etc. up to 491 ... 500, mounting type: snapped, for terminal block width: 5.2 mm, lettering field size: 5.15 x 10.5 mm

# UK 3-TWIN BU - Feed-through terminal block



3002416

<https://www.phoenixcontact.com/us/products/3002416>

## ZB 5,LGS:GLEICHE ZAHLEN - Zack marker strip

1050033

<https://www.phoenixcontact.com/us/products/1050033>



Zack marker strip, Strip, white, labeled, can be labeled with: CMS-P1-PLOTTER, printed horizontally: Identical numbers 1 or 2, etc. up to 100, mounting type: snapped, for terminal block width: 5.2 mm, lettering field size: 5.15 x 10.5 mm, Number of individual labels: 10

---

## ZB 5,LGS:L1-N,PE - Zack marker strip

1050415

<https://www.phoenixcontact.com/us/products/1050415>



Zack marker strip, Strip, white, labeled, horizontal: L1, L2, L3, N, PE, L1, L2, L3, N, PE, mounting type: snapped, for terminal block width: 5.2 mm, lettering field size: 5.15 x 10.5 mm, Number of individual labels: 10

## UK 3-TWIN BU - Feed-through terminal block

3002416

<https://www.phoenixcontact.com/us/products/3002416>



## UC-TM 5 - Marker for terminal blocks

0818108

<https://www.phoenixcontact.com/us/products/0818108>



Marker for terminal blocks, Sheet, white, unlabeled, can be labeled with: BLUEMARK ID COLOR, BLUEMARK ID, BLUEMARK CLED, PLOTMARK, CMS-P1-PLOTTER, mounting type: snapped, for terminal block width: 5.2 mm, lettering field size: 4.6 x 10.5 mm, Number of individual labels: 96

---

## UC-TM 5 CUS - Marker for terminal blocks

0824581

<https://www.phoenixcontact.com/us/products/0824581>



Marker for terminal blocks, can be ordered: by sheet, white, labeled according to customer specifications, mounting type: snap into tall marker groove, for terminal block width: 5.2 mm, lettering field size: 10.5 x 4.6 mm, Number of individual labels: 96

# UK 3-TWIN BU - Feed-through terminal block



3002416

<https://www.phoenixcontact.com/us/products/3002416>

## UCT-TM 5 - Marker for terminal blocks

0828734

<https://www.phoenixcontact.com/us/products/0828734>



Marker for terminal blocks, Sheet, white, unlabeled, can be labeled with: TOPMARK NEO, TOPMARK LASER, BLUEMARK ID COLOR, BLUEMARK ID, BLUEMARK CLED, THERMOMARK PRIME, THERMOMARK CARD 2.0, THERMOMARK CARD, mounting type: snapped, for terminal block width: 5.2 mm, lettering field size: 4.6 x 10.5 mm, Number of individual labels: 72

---

## UCT-TM 5 CUS - Marker for terminal blocks

0829595

<https://www.phoenixcontact.com/us/products/0829595>



Marker for terminal blocks, can be ordered: by sheet, white, labeled according to customer specifications, mounting type: snap into tall marker groove, for terminal block width: 5.2 mm, lettering field size: 4.6 x 10.5 mm, Number of individual labels: 72

# UK 3-TWIN BU - Feed-through terminal block



3002416

<https://www.phoenixcontact.com/us/products/3002416>

## GBS 5-25X12 - Group marker label for terminal marking

0810588

<https://www.phoenixcontact.com/us/products/0810588>



Group marker label, snaps onto terminal center for screw, spring-cage and quick connection terminal blocks, labeled with a 25 x 12 mm label or manually with the B-STIFT, in the foot part with ZB 5

---

## GBS 5-25X5 - Group marker label for terminal marking

0829126

<https://www.phoenixcontact.com/us/products/0829126>



Group marking label, can be snapped into terminal center for screw, spring-cage, push-in, and fast connection terminal blocks, can be labeled with a 24 x 4 mm label or manually using B-STIFT, in the foot part with ZB 5

# UK 3-TWIN BU - Feed-through terminal block



3002416

<https://www.phoenixcontact.com/us/products/3002416>

## STP 5-2-ZB - Marker carriers

3037643

<https://www.phoenixcontact.com/us/products/3037643>



Marker carriers, snaps into ST 2,5 spring-cage terminal blocks, can be marked with UC-TM 5, UC-TMF 5, UCT-TM 5, UCT-TMF 5, ZB 5, or ZBF 5, gray, unlabeled, mounting type: snapped

---

## CLIPFIX 35 - End bracket

3022218

<https://www.phoenixcontact.com/us/products/3022218>



Quick mounting end clamp for NS 35/7,5 DIN rail or NS 35/15 DIN rail, with marking option, width: 9.5 mm, color: gray

# UK 3-TWIN BU - Feed-through terminal block



3002416

<https://www.phoenixcontact.com/us/products/3002416>

## CLIPFIX 35-5 - End bracket

3022276

<https://www.phoenixcontact.com/us/products/3022276>



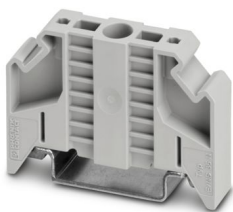
Quick mounting end clamp for NS 35/7,5 DIN rail or NS 35/15 DIN rail, with marking option, with parking option for FBS...5, FBS...6, KSS 5, KSS 6, width: 5.15 mm, color: gray

---

## E/NS 35 N - End bracket

0800886

<https://www.phoenixcontact.com/us/products/0800886>



End clamp, width: 9.5 mm, color: gray



# UK 3-TWIN BU - Feed-through terminal block

3002416

<https://www.phoenixcontact.com/us/products/3002416>



## PSBJ 3/13/4 - Test plug strip

0201304

<https://www.phoenixcontact.com/us/products/0201304>



Test plug strip, number of positions: 1, color: silver

---

## PSB 3/10/4 - Test plug strip

0601292

<https://www.phoenixcontact.com/us/products/0601292>



Test plug strip, number of positions: 1, color: silver

# UK 3-TWIN BU - Feed-through terminal block



3002416

<https://www.phoenixcontact.com/us/products/3002416>

## E/UK - End bracket

1201442

<https://www.phoenixcontact.com/us/products/1201442>

End bracket, Mounting on a DIN rail NS 32 or NS 35, material: PA, color: gray



---

## E/UK 1 - End bracket

1201413

<https://www.phoenixcontact.com/us/products/1201413>

End clamps, for supporting the ends of double-level and three-level terminal blocks, width: 10 mm, color: gray



# UK 3-TWIN BU - Feed-through terminal block

3002416

<https://www.phoenixcontact.com/us/products/3002416>



## SF-SL 0,6X3,5-100 S-VDE - Screwdriver

1212587

<https://www.phoenixcontact.com/us/products/1212587>



Actuation tool, for ST terminal blocks, VDE insulated, with slimmer insulation integrated in the blade, also suitable for use as a bladed screwdriver, size: 0.6 x 3.5 x 100 mm, 2-component grip, with non-slip grip

---

Phoenix Contact 2024 © - all rights reserved

<https://www.phoenixcontact.com>

Phoenix Contact USA  
586 Fulling Mill Road  
Middletown, PA 17057, United States  
(+717) 944-1300  
[info@phoenixcon.com](mailto:info@phoenixcon.com)