

AOYUE[®]
FEK-01

Fume
Extractor

Instruction Manual

Thank you for purchasing the Aoyue FEK-01 Soldering Fume
Extractor.

Please read the manual before using the unit.
Keep manual in accessible place for future reference.

This manual is designed to familiarize and instruct the technician with the proper operation and maintenance of the equipment. Please read carefully and observe the guidelines in order to maximize usage and minimize the risk of injury or accidents .

TABLE OF CONTENTS

Warnings	3
Safety Precautions	4
Product Description	5
Package Inclusion	6
Box Contents	7
Specifications	8
Control Panel Guide	9
Operating Guidelines	10-16

WARNING!!!

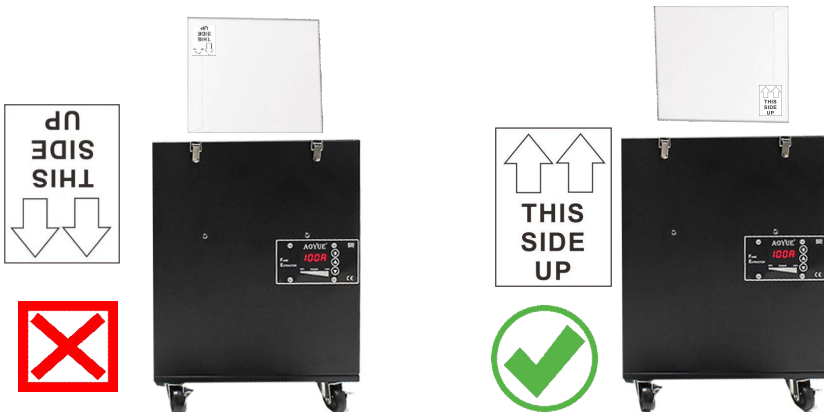
- ◆ REMOVE ALL PLASTIC COVERING FROM FEK-01 SYSTEM, PARTS AND COMPONENTS, CARBON FILTER AND HEPA FILTER.

!RISK OF FIRE IF PLASTICS ARE NOT REMOVED!

- ◆ WARNING OVER EXTENDING ARM MAY UNBALANCE AND TOPPLE FEK-01 SYSTEM.



- ◆ When placing the HEPA filter into the unit make sure to place filter in the center of the unit and take note of the "This side up" and arrow pointing upwards sign.



SAFETY PRECAUTIONS



CAUTION: Improper usage can cause serious injury to personnel and/or damage to equipment and work area.

For your own safety, please observe the following precautions.

- Check each component after opening the package to make sure everything is in good condition. If there are any suspected damage, do not use the item and report the issue to your vendor.
- Turn OFF the main power switch and unplug the device from power source when moving the device.
- Do not strike or subject the main unit (and all its components) to physical shock. Use carefully to avoid damage to any part.
- Handle with care.
 - Never drop or sharply jolt the unit.
 - Contains delicate parts that may break if the unit is dropped.
- Make sure the equipment is always grounded. Always connect power to a grounded receptacle.
- Disconnect the plug from the power source if the unit will not be used for a long period.
 - Turn off power during breaks, if possible.
- Use only genuine replacement parts.
 - Turn off power and let the unit cool down before replacing any part.
- Do not alter the unit, specifically the internal circuitry, in any manner.

PRODUCT DESCRIPTION

- ◆ Portable Fume Extraction System with Integrated Filter Module includes HEPA Filter (High Efficiency Particulate Air filter) For Removing the Dust Particles and Enhanced Activated Carbon filtration system.
- ◆ With actual Carbon filter beads that trap odor and toxins .
- ◆ Activated carbon beads are utilized to it's optimum efficiency.
- ◆ Powerful suction, Quiet operation.
- ◆ Electronic Control Panel with Variable airflow adjustment.
- ◆ Excellent cost performance filters.
- ◆ HEPA filter filters out 97% of particles greater than 0.3µm
- ◆ Sub-filters extend the life of main filters.
- ◆ Free standing arms .
- ◆ Includes special nozzle with integrated LED lamp and activated carbon sub-filter pads.
- ◆ Portable with wheels for easy relocation
- ◆ Arms can be bent as desired and maintain their shape after adjustment.

PACKAGE INCLUSION

- 1 unit Station with Main filter and Carbon filter
- 2 pc. Extra activated carbon sub-filter pads
- 2 pc. Exhaust arm kit
- 2 pc. Filter hood with LED lamp and activated carbon sub-filter pads
- 1 pc. Air inlet cover for single arm operation
- 4 pc. Wheels with breaks
- 1 pc. Power Cord
- 1 pc. Instruction Manual

Notes:

- LED lamp batteries not included. Due to shipping regulations batteries are not included in the package for safety. Please use a 9V battery for the LED light.
- Main filter and carbon filter are inside the station please remove the plastic covering of these filters before usage.

Filter part numbers:

FEK-MF –Main filter

FEK-CF—Carbon filter

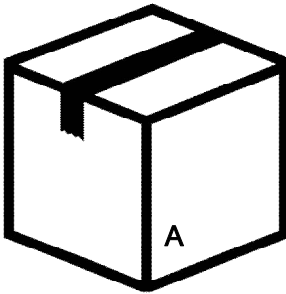
BOX CONTENTS

1 pc. Main external box (BOX A)

1 pc. FEK Station box (BOX B)

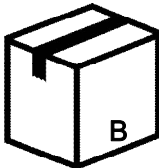
2 pc. Filter hood box (BOX C)

1 pc. Parts box (BOX D)



BOX A Main external box contents

1. Arm x2
2. FEK Station box (Box B) x1
3. Filter hood box (Box C) x2
4. Parts box (Box D) x1



BOX B FEK station box contents

1. FEK station x1
2. User manual x1



BOX C Filter hood box contents

1. LED nozzle x1
2. Sub filter x1



BOX D Parts box contents

1. Wheels x4
2. Air inlet cover x1
3. Power cord x1

SPECIFICATION

Voltage Input :	available in 110V / 220V
Dimensions:	320(w) x450 (h) x 260 (d) mm
Weight:	8.5Kg
Power Consumption:	80-200W
Filter:	HEPA Filter / Carbon Filter



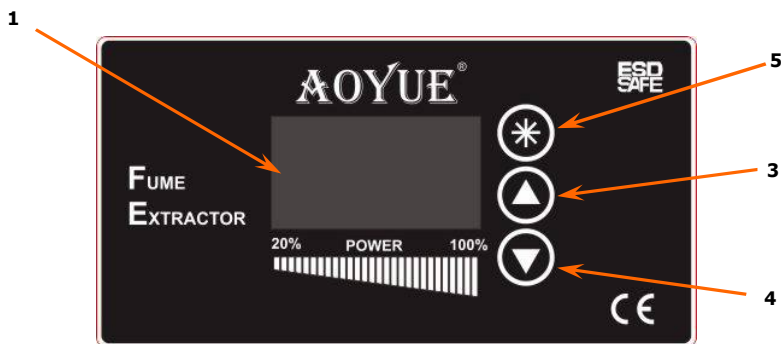
Arm



Filter hood



CONTROL PANEL GUIIDE

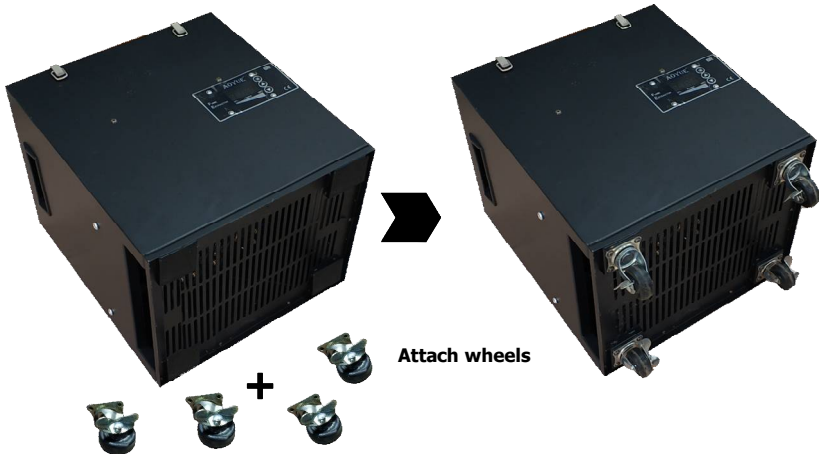


1. Selected power display
2. ON/OFF button (long press to activate, long press to deactivate).
3. Increase button
4. Decrease button

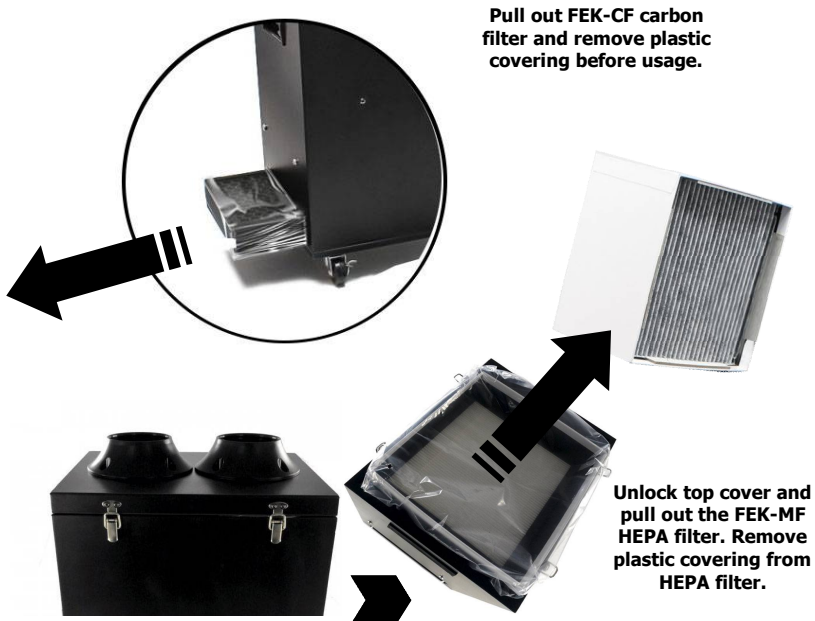
OPERATING GUIDELINES

Assembly:

A. Attach Wheels



B. Remove Plastic coverings of the carbon filter and HEPA filter.

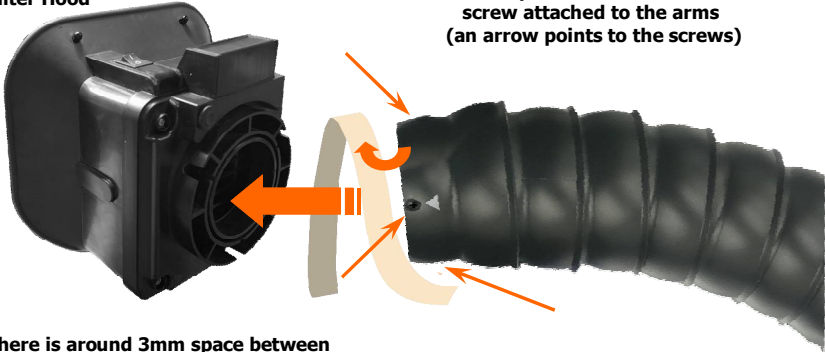


OPERATING GUIDELINES

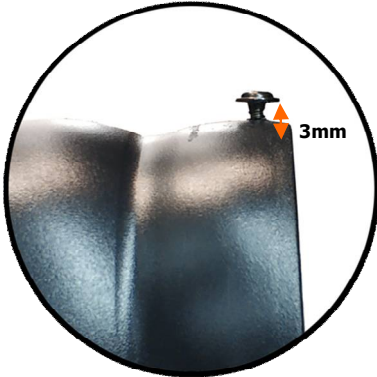
C. Attach filter hood with securing screw.

Filter Hood

Remove tape to reveal three 3x6mm screw attached to the arms (an arrow points to the screws)



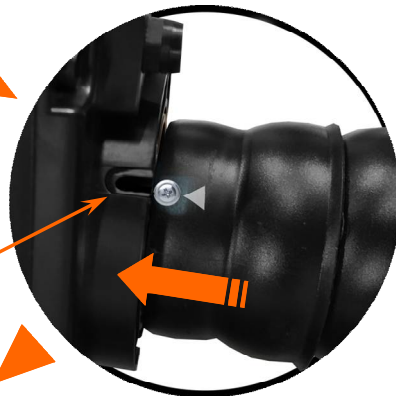
There is around 3mm space between the arm and the screw head to be able to slide into the provided u-slot



Push arm fully into the hood then tighten the screws. Some force is needed to push the arm into the hood. Please secure all three screws.



U-Slot



Screw in fully flushed on the filter hood to provide best grip.

OPERATING GUIDELINES

D. Attach Arm for single or double fume extraction operation.



**Single Fume
Extraction
operation**

**Dual Fume Extraction
operation**



**Attach air inlet cover for single
fume extraction operation**



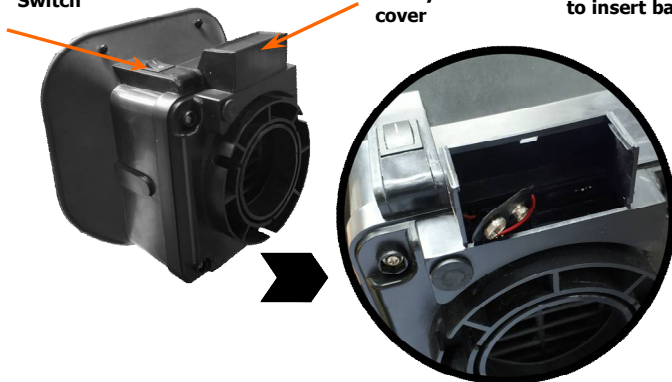
OPERATING GUIDELINES

E. Insert Battery for filter hood

LED Switch

Battery cover

Slide open battery cover to insert battery



F. Fully assembled

Unlock to access
HEPA filter

Unlock to access
HEPA filter



Pull out carbon filter using
the two white tabs.



OPERATING GUIDELINES

REMINDERS:

1. Make sure the equipment is placed on a flat stable surface and do not over extend arm as there is risk of unit toppling.
2. Ensure all function switches are in the OFF position.
3. Ensure all terminal connections are properly secured.



IMPORTANT: Please refer to the **CONTROL PANEL GUIDE** page for button switches.

A. PROCEDURES

1. Plug the power cord into a grounded wall socket. The station is protected against electrostatic discharge and must be grounded for full efficiency.
2. To switch on the unit, the display will show "OFF" signifying it is in the stand-by mode.
3. Attach arms to the exhaust connector.
4. The arms can be positioned such that maximum suction is reached.
5. To turn on the suction press the * button.
6. To adjust the fan speed press increase or decrease button.
7. Fan speed is adjustable from 20 to 100 percent.
8. Fan speed is programmed into memory when the * button is pressed again to switch to the "OFF" standby mode.
9. The integrated suction hood's LED lamp needs a 9V battery to work.
10. Slide open the battery cover and insert a 9 Volt battery into the compartment. Put battery cover back in place.
11. Press the LED switch to turn ON the LED lamp, To turn OFF the LED lamp press the LED switch again. Turn OFF LED lamp when not in use to conserve battery life.

OPERATING GUIDELINES

B. HEPA FILTER and CARBON FILTER REPLACEMENT

1. HEAPA and Carbon filter may need replacement after 3 months depending on usage, It is recommended to replace carbon filter and heap filter at the same time for best performance.
2. Signs that the filter needs replacement:
 - ◆ The HEPA filter has turned yellow or light brown in color due to all the particles and smoke trapped in the filter.
 - ◆ The fume filtration capability has deteriorated due to all the particles and smoke trapped in the filter.
 - ◆ Fume suction feels weaker this may be due to clogged filters.
3. To replace HEPA filter simply unlock the top cover and pull out the old HEPA filter, before placing the new HEPA filter remove all plastic coverings of the new HEPA filter, inset HEPA filter in the center of the unit with the arrow pointing upwards.
4. Lock top cover firmly to prevent air leakage and loss of suction.
5. To replace carbon filter simply pull out the old filter via the two white pull tabs, before placing the carbon filter remove all plastic coverings of the new carbon filter, slide the carbon filter in the unit.

C. FILTER REPLACEMENT ADVISORY

1. The unit may display the word FLT meaning the filter may need replacement, replace the filter based on above instructions.
2. If there is no need to replace filter or if the filter had been replaced simply reset the filter replacement advisory display by pressing and holding both increase and decrease buttons.

OPERATING GUIDELINES

D. LINE FREQUENCY SWITCHING

The system is design to operate either on 50Hz or 60Hz line frequency. This frequency is set accordingly at the factory, however this line frequency can be manually set by following the procedures below.

1. Turn main power switch to "OFF" position.
2. Press and hold both increase and decrease button while turning the power switch to "ON" position .
3. The display will show 50 or 60 indicating the frequency it is currently set to.
4. Repeat above steps to switch to correct frequency.

Warning: If wrong frequency is selected the system's air suction controls will behave erratically or be uncontrollable. Select to correct line frequency to enable normal usage.

AOYUE INTERNATIONAL LIMITED

Jishui Industrial Zone, Nantou, Zhongshan City, Guangdong Province, P.R.China
<http://www.aoyue3d.com>