

## har-flex Power M str 2P SMT PL1 280pcs

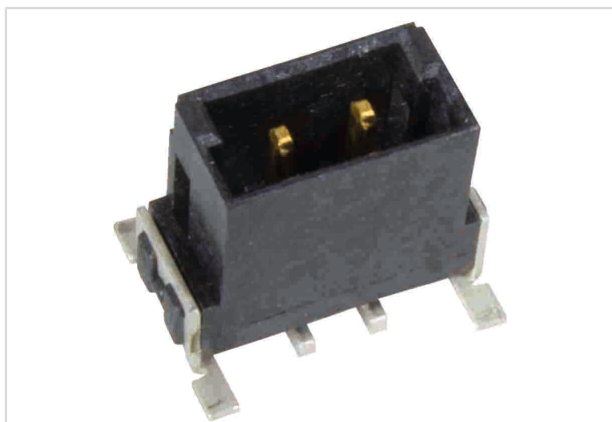


Image is for illustration purposes only. Please refer to product description.

Part number	15 52 002 2601 000
Specification	har-flex Power M str 2P SMT PL1 280pcs
HARTING eCatalogue	<a href="https://b2b.harting.com/15520022601000">https://b2b.harting.com/15520022601000</a>

### Identification

Category	Connectors
Series	har-flex®
Identification	Power
Element	Male connector
Description of the contact	Straight

### Version

Termination method	Reflow soldering termination (SMT)
Connection type	Motherboard to daughtercard Mezzanine
Number of contacts	2
Performance level	1
Details	According to IEC 61984, it is an unencapsulated connector. Protection against electric shock must be ensured by the type of installation by the user.
Pack contents	280 pieces on reel

### Technical characteristics

Contact spacing (mating side)	2.54 mm
Stacking height	3.25 mm
Rated current	25 A
Rated voltage	180 V
Rated voltage	acc. to IEC 60664-1
Rated impulse voltage	1.5 kV
Pollution degree	2



Pushing Performance

## Technical characteristics

Clearance distance	≥1.74 mm
Creepage distance	≥1.74 mm PCB ≥1.89 mm Connector
Insulation resistance	>10 <sup>10</sup> Ω
Contact resistance	≤25 mΩ
Limiting temperature	-55 ... +125 °C
Mating cycles	≥500
Test voltage U <sub>r.m.s.</sub>	1.39 kV
Isolation group	IIIa (175 ≤ CTI < 400)
Moisture Sensitivity Level (MSL)	1 acc. to ECA/IPC/JEDEC J-STD-020D
Process Sensitivity Level (PSL)	R0 acc. to ECA/IPC/JEDEC J-STD-020D
Coplanarity of contacts	0.1 mm

## Material properties

Material (insert)	Liquid crystal polymer (LCP)
Colour (insert)	Black
Material (contacts)	Copper alloy
Surface (contacts)	Au over Pd/Ni Mating side Tin plated Termination side
Material flammability class acc. to UL 94	V-0

## Commercial data

Packaging size	1
Country of origin	China
European customs tariff number	85366990
eCl@ss	27460201 PCB connector (board connector)

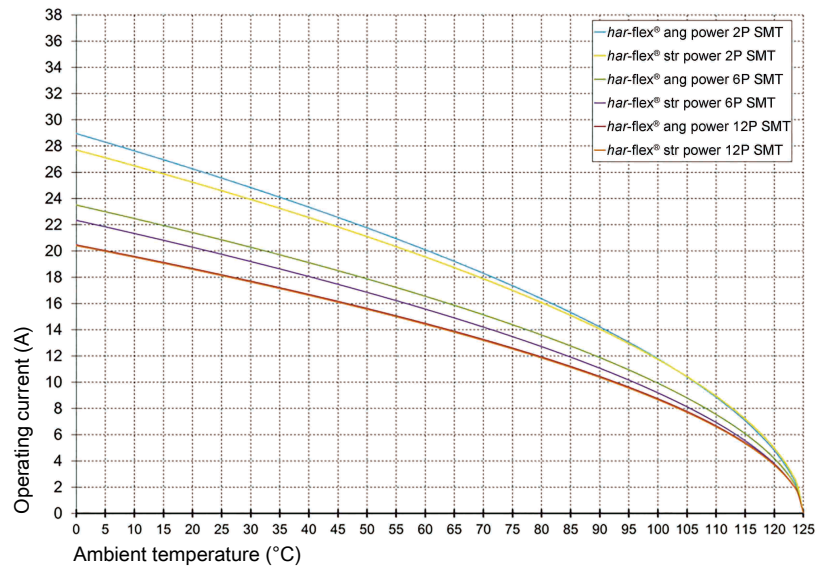


Pushing Performance

## Current carrying capacity

The current carrying capacity of the connectors is limited by the thermal load capability of the contact element material including the connections and the insulating parts. The derating curve is therefore valid for currents which flow constantly (non-intermittent) through each contact element of the connector evenly, without exceeding the allowed maximum temperature.

Measuring and testing techniques acc. to IEC 60512-5-2



Derating curve 80%