

# EG 45-GP/ABS GY - Mounting base housing



2764111  
<https://www.phoenixcontact.com/us/products/2764111>

Please be informed that the data shown in this PDF document is generated from our online catalog. Please find the complete data in the user documentation. Our general terms of use for downloads are valid.



Component housing, Lower housing part, with snap-on foot and test opening with side cover, without vents, width: 45 mm, height: 75 mm, color: window grey (similar RAL 7040), cross connection: without bus connector, number of positions cross connector: not relevant

## Your advantages

- Tool-free mounting

## Commercial data

Item number	2764111
Packing unit	10 pc
Minimum order quantity	10 pc
Note	Made to order (non-returnable)
Sales key	AC11
Product key	ACHCGA
GTIN	4017918246921
Weight per piece (including packing)	53.24 g
Weight per piece (excluding packing)	51 g
Customs tariff number	85389099
Country of origin	PL

# EG 45-GP/ABS GY - Mounting base housing



2764111

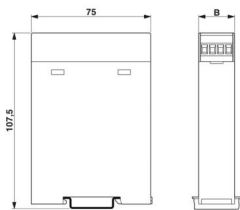
<https://www.phoenixcontact.com/us/products/2764111>

## Technical data

### Product properties

Product type	Enclosure bottom part
Housing type	Component housing
Housing series	EG
Product family	EG...G
Type	Lower housing parts with test opening with side cover, housing cover necessary to complete the module
Number of positions	16
Max. number of positions	0)
Type	Lower housing part, with snap-on foot and test opening with side cover
Ventilation openings present	no

### Dimensions

Dimensional drawing	
Width	45 mm
Height	75 mm

### PCB design

PCB thickness	1.4 mm ... 1.8 mm
---------------	-------------------

### Material specifications

Color (Housing)	window grey (RAL 7040)
Flammability rating according to UL 94	HB
Housing material	ABS
Surface characteristics	untreated

### Environmental and real-life conditions

#### Ambient conditions

Degree of protection	IP20
Max. IP code to attain	IP20
Ambient temperature (operation)	-40 °C ... 80 °C (depending on power dissipation)
Ambient temperature (storage/transport)	-40 °C ... 55 °C
Ambient temperature (assembly)	-5 °C ... 80 °C

### PCB data

# EG 45-GP/ABS GY - Mounting base housing



2764111

<https://www.phoenixcontact.com/us/products/2764111>

Thickness of the PCB	1.4 mm ... 1.8 mm
----------------------	-------------------

## Mounting

Mounting type	DIN rail mounting
Mounting position	Vertical (horizontal DIN rail)

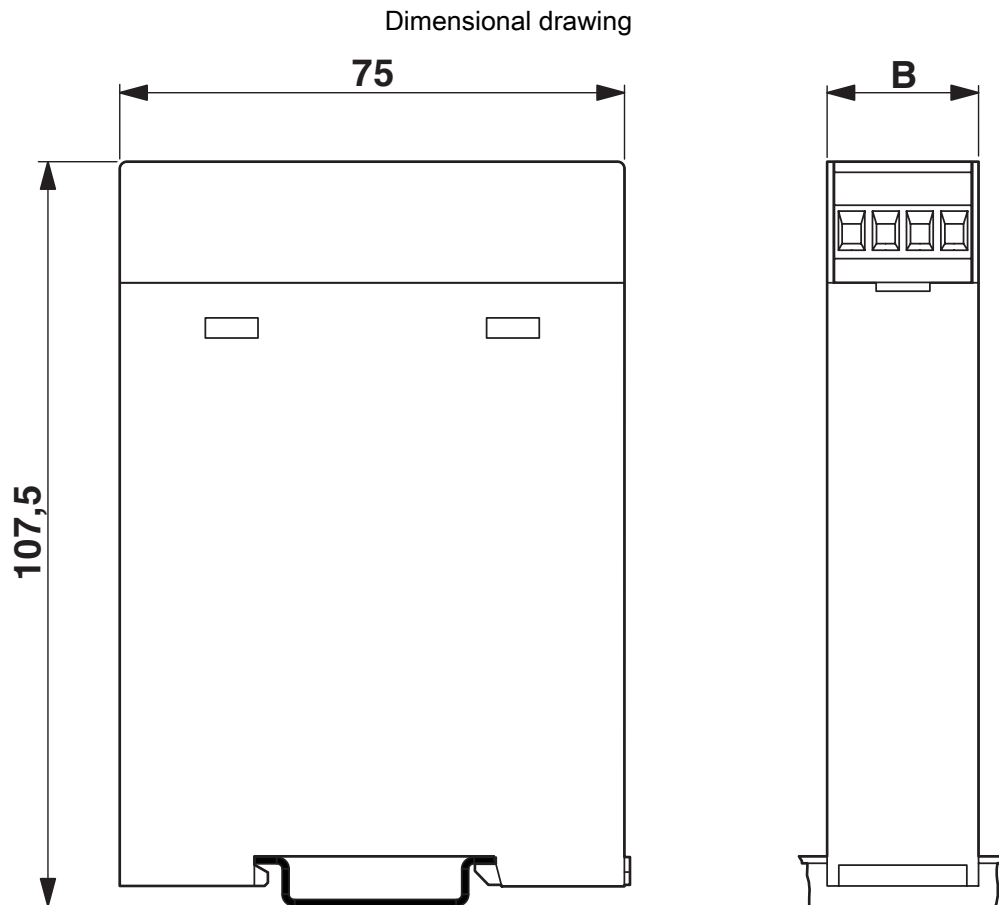
# EG 45-GP/ABS GY - Mounting base housing

2764111

<https://www.phoenixcontact.com/us/products/2764111>



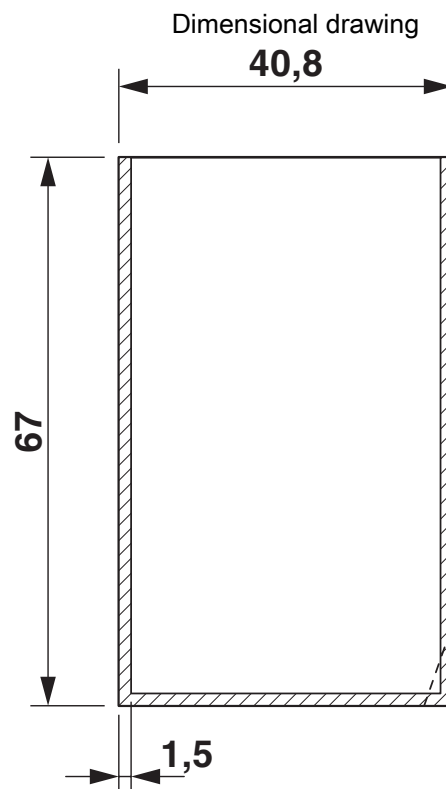
## Drawings



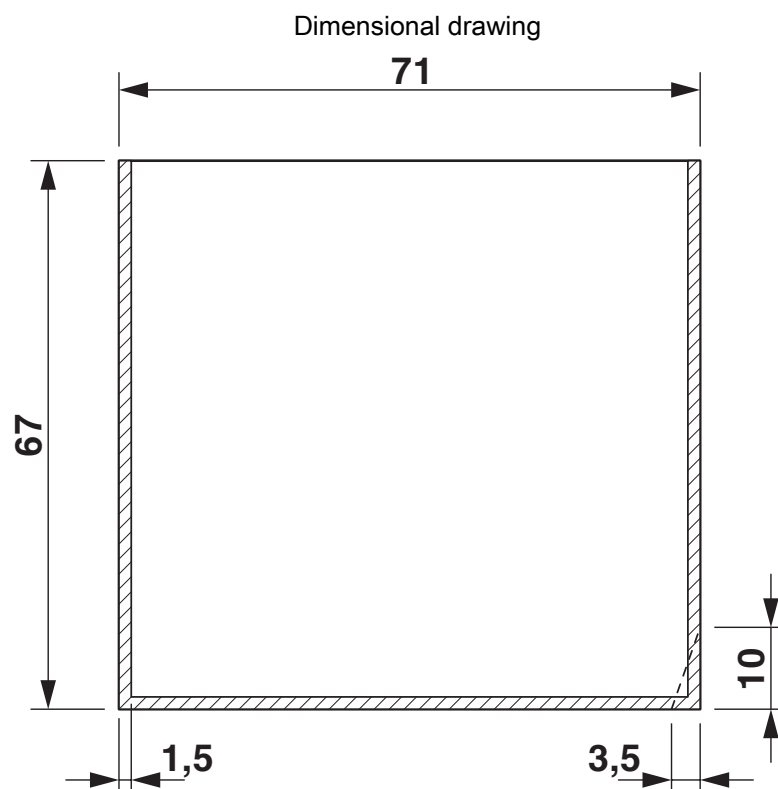
# EG 45-GP/ABS GY - Mounting base housing

2764111

<https://www.phoenixcontact.com/us/products/2764111>



valid for PCB 1; 3; 5 and 6, see explosion drawing

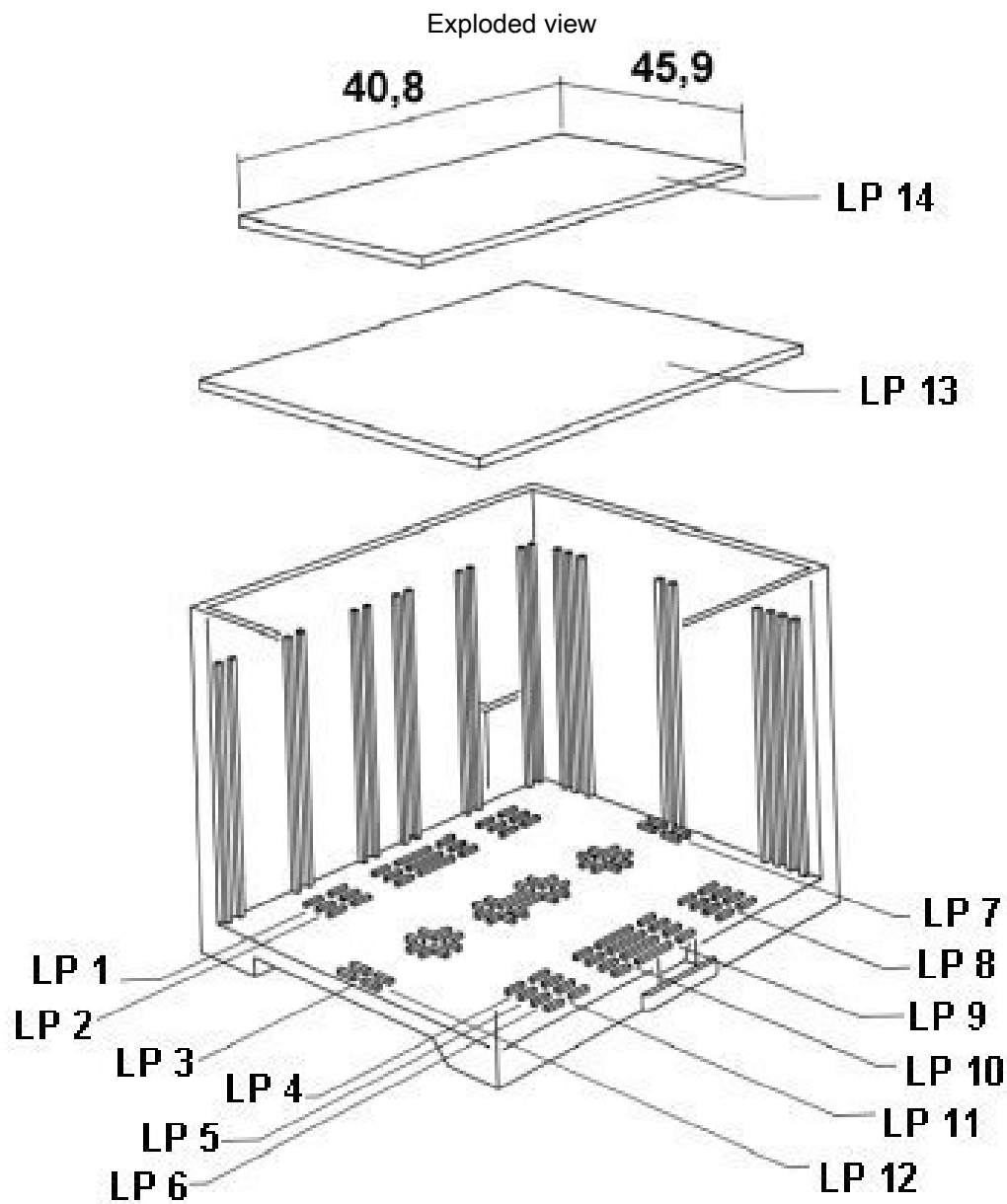


valid for PCB 10, see explosion drawing

# EG 45-GP/ABS GY - Mounting base housing

2764111

<https://www.phoenixcontact.com/us/products/2764111>



valid for PCB 14

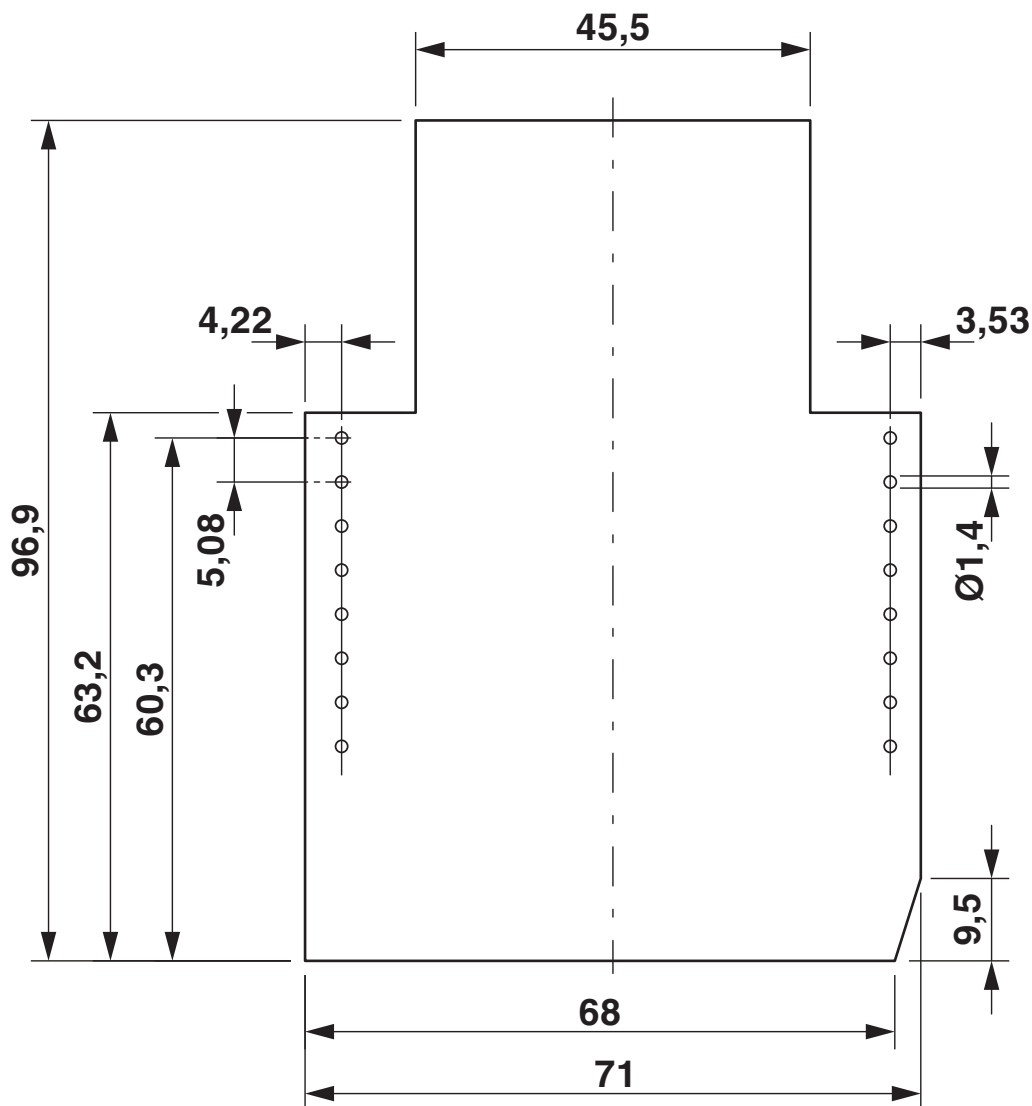
# EG 45-GP/ABS GY - Mounting base housing



2764111

<https://www.phoenixcontact.com/us/products/2764111>

Dimensional drawing

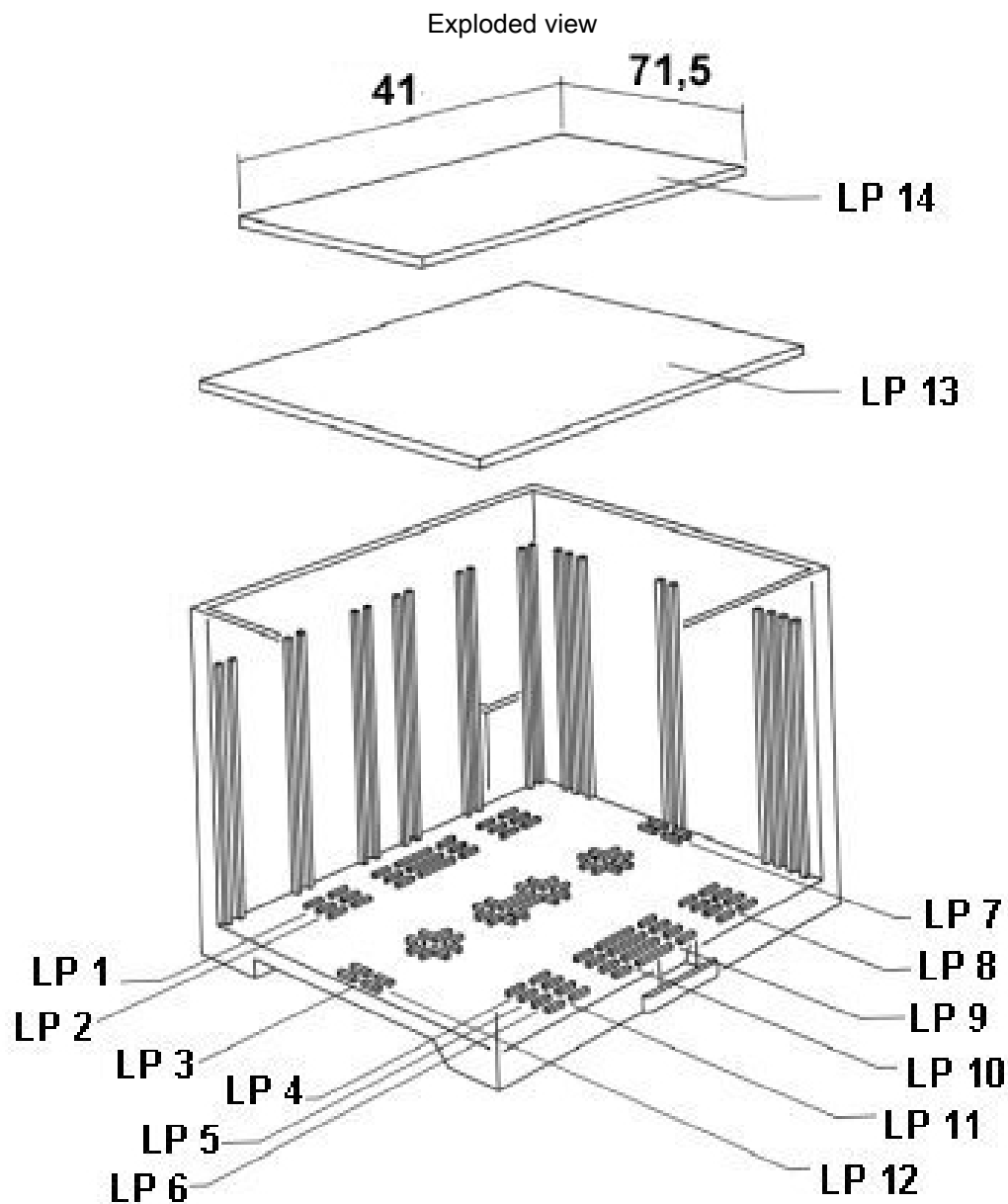


Component mounting side, if the double-level upper part is used

# EG 45-GP/ABS GY - Mounting base housing

2764111

<https://www.phoenixcontact.com/us/products/2764111>



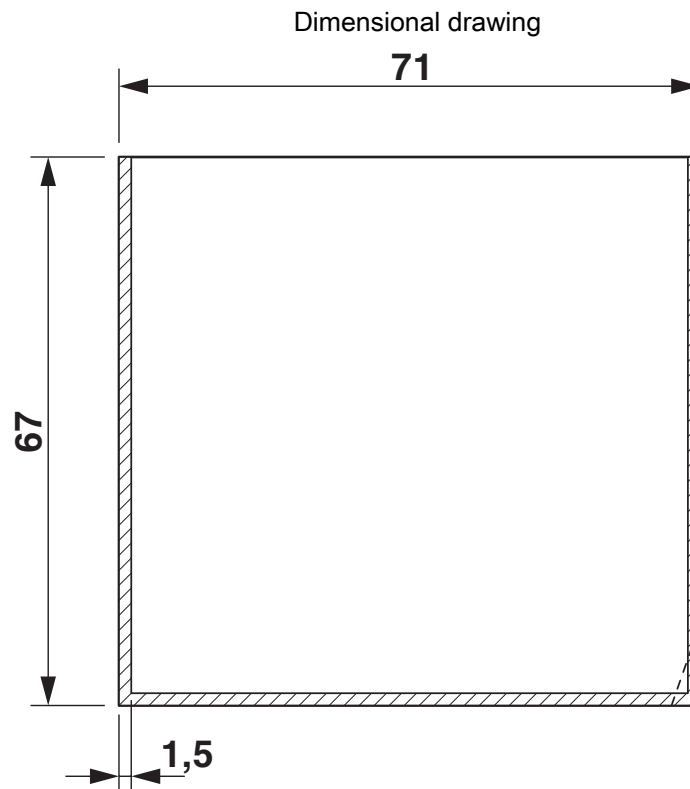
valid for PCB 13



# EG 45-GP/ABS GY - Mounting base housing

2764111

<https://www.phoenixcontact.com/us/products/2764111>



valid for PCB 7 and 12, see explosion drawing

# EG 45-GP/ABS GY - Mounting base housing



2764111

<https://www.phoenixcontact.com/us/products/2764111>

## Approvals

🔗 To download certificates, visit the product detail page: <https://www.phoenixcontact.com/us/products/2764111>



**UL Recognized**

Approval ID: FILE E 240868

# EG 45-GP/ABS GY - Mounting base housing



2764111

<https://www.phoenixcontact.com/us/products/2764111>

## Classifications

### ECLASS

ECLASS-11.0	27182702
ECLASS-13.0	27190601

### ETIM

ETIM 8.0	EC001031
----------	----------

### UNSPSC

UNSPSC 21.0	31261500
-------------	----------

# EG 45-GP/ABS GY - Mounting base housing



2764111

<https://www.phoenixcontact.com/us/products/2764111>

## Environmental product compliance

EU RoHS	
Fulfills EU RoHS substance requirements	Yes, No exemptions
China RoHS	
Environment friendly use period (EFUP)	EFUP-E
	No hazardous substances above the limits
EU REACH SVHC	
REACH candidate substance (CAS No.)	No substance above 0.1 wt%

# EG 45-GP/ABS GY - Mounting base housing



2764111

<https://www.phoenixcontact.com/us/products/2764111>

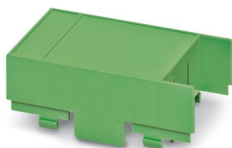
## Mandatory accessories

### EG 45-AE/ABS GN - Upper housing part

2764409

<https://www.phoenixcontact.com/us/products/2764409>

Component housing, Cover, for one-sided connection, width: 45 mm, height: 75 mm, color: green (similar RAL 6021)



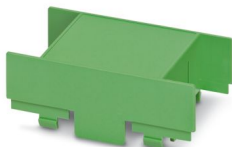
---

### EG 45-A/ABS GN - Upper housing part

2764179

<https://www.phoenixcontact.com/us/products/2764179>

Component housing, Cover, for two-sided connection, width: 45 mm, height: 75 mm, color: green (similar RAL 6021)



# EG 45-GP/ABS GY - Mounting base housing

2764111

<https://www.phoenixcontact.com/us/products/2764111>

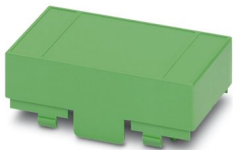


## EG 45-AG/ABS GN - Upper housing part

2907363

<https://www.phoenixcontact.com/us/products/2907363>

Component housing, Cover, closed, width: 45 mm, height: 75 mm, color: green (similar RAL 6021)



---

## EG 45-A/ABS GY - Upper housing part

2764250

<https://www.phoenixcontact.com/us/products/2764250>

Component housing, Cover, for two-sided connection, width: 45 mm, height: 75 mm, color: window grey (similar RAL 7040)



---

## Accessories

# EG 45-GP/ABS GY - Mounting base housing



2764111

<https://www.phoenixcontact.com/us/products/2764111>

## CR-MSTB - Coding section

1734401

<https://www.phoenixcontact.com/us/products/1734401>

Coding section, inserted into the recess in the header or the inverted plug, red insulating material



---

## CP-MSTB - Coding profile

1734634

<https://www.phoenixcontact.com/us/products/1734634>

Coding profile, is inserted into the slot on the plug or inverted header, red insulating material



# EG 45-GP/ABS GY - Mounting base housing



2764111

<https://www.phoenixcontact.com/us/products/2764111>

## MSTBO 2,5/ 8-GL-5,08 - PCB header

1850495

<https://www.phoenixcontact.com/us/products/1850495>



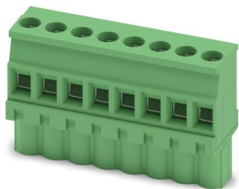
PCB headers, nominal cross section: 2.5 mm<sup>2</sup>, color: green, nominal current: 8 A, rated voltage (III/2): 320 V, contact surface: Tin, contact connection type: Pin, number of potentials: 8, number of rows: 1, number of positions: 8, number of connections: 8, product range: MSTBO 2,5/...-GL, pitch: 5.08 mm, mounting: Wave soldering, pin layout: Linear pinning, solder pin [P]: 3.2 mm, number of solder pins per potential: 1, plug-in system: COMBICON MSTB 2,5, locking: without, mounting: without, type of packaging: packed in cardboard

---

## MVSTBW 2,5/ 8-ST - PCB connector

1792582

<https://www.phoenixcontact.com/us/products/1792582>



PCB connector, nominal cross section: 2.5 mm<sup>2</sup>, color: green, nominal current: 12 A, rated voltage (III/2): 320 V, contact surface: Tin, contact connection type: Socket, number of potentials: 8, number of rows: 1, number of positions: 8, number of connections: 8, product range: MVSTBW 2,5/...-ST, pitch: 5 mm, connection method: Screw connection with tension sleeve, screw head form: L Slotted, conductor/PCB connection direction: -90 °, locking clip: - Locking clip, plug-in system: COMBICON MSTB 2,5, locking: without, mounting: without, type of packaging: packed in cardboard



# EG 45-GP/ABS GY - Mounting base housing



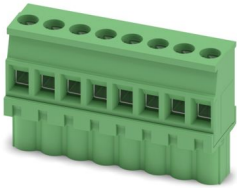
2764111

<https://www.phoenixcontact.com/us/products/2764111>

## MVSTBW 2,5/ 8-ST-5,08 - PCB connector

1792812

<https://www.phoenixcontact.com/us/products/1792812>



PCB connector, nominal cross section: 2.5 mm<sup>2</sup>, color: green, nominal current: 12 A, rated voltage (III/2): 320 V, contact surface: Tin, contact connection type: Socket, number of potentials: 8, number of rows: 1, number of positions: 8, number of connections: 8, product range: MVSTBW 2,5/...-ST, pitch: 5.08 mm, connection method: Screw connection with tension sleeve, screw head form: L Slotted, conductor/PCB connection direction: -90 °, locking clip: - Locking clip, plug-in system: COMBICON MSTB 2,5, locking: without, mounting: without, type of packaging: packed in cardboard

---

## MVSTBW 2,5/ 8-STEH - PCB connector

1784309

<https://www.phoenixcontact.com/us/products/1784309>



PCB connector, nominal cross section: 2.5 mm<sup>2</sup>, color: green, nominal current: 12 A, rated voltage (III/2): 320 V, contact surface: Tin, contact connection type: Socket, number of potentials: 8, number of rows: 1, number of positions: 8, number of connections: 8, product range: MVSTBW 2,5/...-STEH, pitch: 5 mm, connection method: Screw connection with tension sleeve, screw head form: L Slotted, conductor/PCB connection direction: -90 °, locking clip: - Locking clip, plug-in system: COMBICON MSTB 2,5, locking: without, mounting: without, type of packaging: packed in cardboard

# EG 45-GP/ABS GY - Mounting base housing



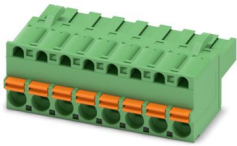
2764111

<https://www.phoenixcontact.com/us/products/2764111>

## FKCT 2,5/ 8-ST - PCB connector

1909278

<https://www.phoenixcontact.com/us/products/1909278>



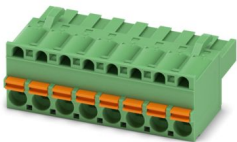
PCB connector, nominal cross section: 2.5 mm<sup>2</sup>, color: green, nominal current: 12 A, rated voltage (III/2): 320 V, contact surface: Tin, contact connection type: Socket, number of potentials: 8, number of rows: 1, number of positions: 8, number of connections: 8, product range: FKCT 2,5/...-ST, pitch: 5 mm, connection method: Push-in spring connection, conductor/PCB connection direction: 0 °, locking clip: - Locking clip, plug-in system: COMBICON MSTB 2,5, locking: without, mounting: without, type of packaging: packed in cardboard

---

## FKCT 2,5/ 8-ST-5,08 - PCB connector

1902178

<https://www.phoenixcontact.com/us/products/1902178>



PCB connector, nominal cross section: 2.5 mm<sup>2</sup>, color: green, nominal current: 12 A, rated voltage (III/2): 320 V, contact surface: Tin, contact connection type: Socket, number of potentials: 8, number of rows: 1, number of positions: 8, number of connections: 8, product range: FKCT 2,5/...-ST, pitch: 5.08 mm, connection method: Push-in spring connection, conductor/PCB connection direction: 0 °, locking clip: - Locking clip, plug-in system: COMBICON MSTB 2,5, locking: without, mounting: without, type of packaging: packed in cardboard

# EG 45-GP/ABS GY - Mounting base housing



2764111

<https://www.phoenixcontact.com/us/products/2764111>

## MKKDSH 3/ 2 - PCB terminal block

1721045

<https://www.phoenixcontact.com/us/products/1721045>



PCB terminal block, nominal current: 24 A, rated voltage (III/2): 400 V, nominal cross section: 2.5 mm<sup>2</sup>, number of potentials: 2, number of rows: 1, number of positions per row: 2, product range: MKKDSH 3, pitch: 5 mm, connection method: Screw connection with tension sleeve, screw head form: L Slotted, mounting: Wave soldering, conductor/PCB connection direction: 0 °, color: green, Pin layout: Linear pinning, Solder pin [P]: 5 mm, number of solder pins per potential: 1, type of packaging: packed in cardboard. The article can be aligned to create different nos. of positions!

---

## MKKDSH 3/ 3 - PCB terminal block

1721346

<https://www.phoenixcontact.com/us/products/1721346>



PCB terminal block, nominal current: 24 A, rated voltage (III/2): 400 V, nominal cross section: 2.5 mm<sup>2</sup>, number of potentials: 3, number of rows: 1, number of positions per row: 3, product range: MKKDSH 3, pitch: 5 mm, connection method: Screw connection with tension sleeve, screw head form: L Slotted, mounting: Wave soldering, conductor/PCB connection direction: 0 °, color: green, Pin layout: Linear pinning, Solder pin [P]: 5 mm, number of solder pins per potential: 1, type of packaging: packed in cardboard. The article can be aligned to create different nos. of positions!

# EG 45-GP/ABS GY - Mounting base housing



2764111

<https://www.phoenixcontact.com/us/products/2764111>

## MKKDSH 3/ 8 - PCB terminal block

1703283

<https://www.phoenixcontact.com/us/products/1703283>



PCB terminal block, nominal current: 24 A, rated voltage (III/2): 400 V, nominal cross section: 2.5 mm<sup>2</sup>, number of potentials: 8, number of rows: 1, number of positions per row: 8, product range: MKKDSH 3, pitch: 5 mm, connection method: Screw connection with tension sleeve, screw head form: L Slotted, mounting: Wave soldering, conductor/PCB connection direction: 0 °, color: green, Pin layout: Linear pinning, Solder pin [P]: 5 mm, number of solder pins per potential: 1, type of packaging: packed in cardboard. The article can be aligned to create different nos. of positions!

---

Phoenix Contact 2024 © - all rights reserved

<https://www.phoenixcontact.com>

Phoenix Contact USA  
586 Fulling Mill Road  
Middletown, PA 17057, United States  
(+717) 944-1300  
[info@phoenixcon.com](mailto:info@phoenixcon.com)