

# FBS 10-3,5 GY - Plug-in bridge

3213196

<https://www.phoenixcontact.com/us/products/3213196>



Please be informed that the data shown in this PDF document is generated from our online catalog. Please find the complete data in the user documentation. Our general terms of use for downloads are valid.

Plug-in bridge, pitch: 3.5 mm, number of positions: 10, color: gray



## Your advantages

- The 2- to 50-pos. jumpers can bridge up to 50 terminal blocks in the two bridge shafts of the CLIPLINE complete system in one step

## Commercial data

Item number	3213196
Packing unit	50 pc
Minimum order quantity	50 pc
Sales key	BE29
Product key	BE2Z2X
Catalog page	Page 403 (C-1-2019)
GTIN	4046356599276
Weight per piece (including packing)	3.48 g
Weight per piece (excluding packing)	3.45 g
Customs tariff number	85366990
Country of origin	DE

# FBS 10-3,5 GY - Plug-in bridge

3213196

<https://www.phoenixcontact.com/us/products/3213196>



## Technical data

### Product properties

Product type	Jumper
Number of positions	10
Pitch	3.5 mm

### Electrical properties

Maximum load current	17.5 A (The current values for the jumpers can deviate when used in different modular terminal blocks. The precise values can be found in the accessories data for the respective modular terminal blocks.)
----------------------	---

### Connection data

Maximum load current	17.5 A (The current values for the jumpers can deviate when used in different modular terminal blocks. The precise values can be found in the accessories data for the respective modular terminal blocks.)
----------------------	---

### Dimensions

Pitch	3.5 mm
-------	--------

### Material specifications

Color	gray
Material	Copper
Flammability rating according to UL 94	V0
Insulating material	PA

### Environmental and real-life conditions

#### Ambient conditions

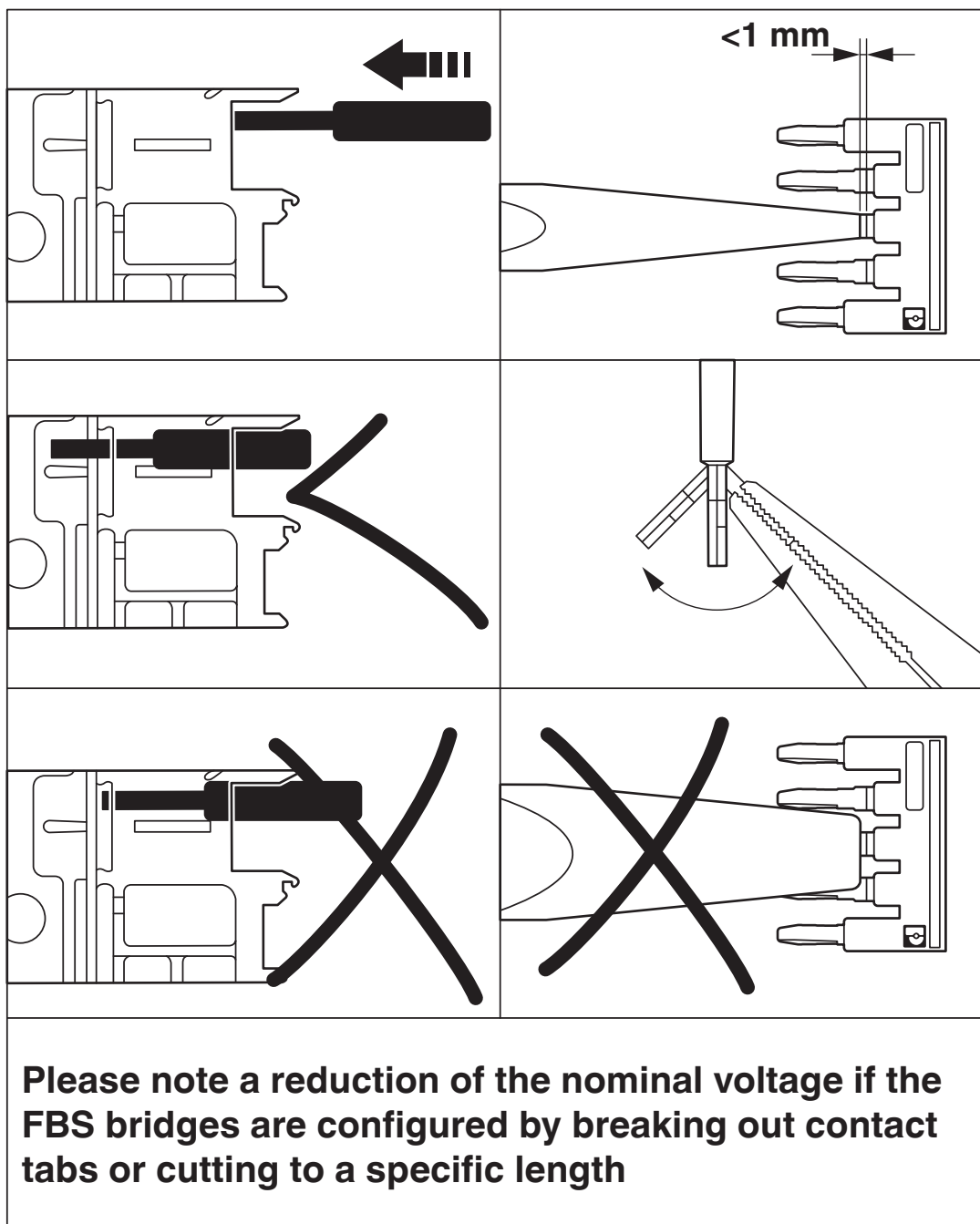
Ambient temperature (operation)	-60 °C ... 110 °C (Operating temperature range incl. self-heating; for max. short-term operating temperature, see RTI Elec.)
Ambient temperature (storage/transport)	-25 °C ... 60 °C (for a short time, no longer than 24 h, -60°C to +70°C)
Ambient temperature (assembly)	-5 °C ... 70 °C
Ambient temperature (actuation)	-5 °C ... 70 °C
Permissible humidity (operation)	20 % ... 90 %
Permissible humidity (storage/transport)	30 % ... 70 %

### Mounting

Mounting type	Plug-in mounting
---------------	------------------

## Drawings

Schematic diagram



# FBS 10-3,5 GY - Plug-in bridge

3213196

<https://www.phoenixcontact.com/us/products/3213196>



## Classifications

### ECLASS

ECLASS-11.0	27141140
ECLASS-12.0	27141140
ECLASS-13.0	27250303

### ETIM

ETIM 9.0	EC000489
----------	----------

### UNSPSC

UNSPSC 21.0	39121400
-------------	----------

# FBS 10-3,5 GY - Plug-in bridge

3213196

<https://www.phoenixcontact.com/us/products/3213196>



## Environmental product compliance

EU RoHS	
Fulfills EU RoHS substance requirements	Yes, No exemptions
China RoHS	
Environment friendly use period (EFUP)	EFUP-E
	No hazardous substances above the limits
EU REACH SVHC	
REACH candidate substance (CAS No.)	No substance above 0.1 wt%

# FBS 10-3,5 GY - Plug-in bridge

3213196

<https://www.phoenixcontact.com/us/products/3213196>



## Accessories

### CUTFOX-FBS - Front cutter

1212124

<https://www.phoenixcontact.com/us/products/1212124>



**Cutting tool**, for separating individual jumper bars from FBS ... plug-in bridges and EB ... insertion bridges

---

Phoenix Contact 2024 © - all rights reserved  
<https://www.phoenixcontact.com>

Phoenix Contact USA  
586 Fulling Mill Road  
Middletown, PA 17057, United States  
(+717) 944-1300  
[info@phoenixcon.com](mailto:info@phoenixcon.com)