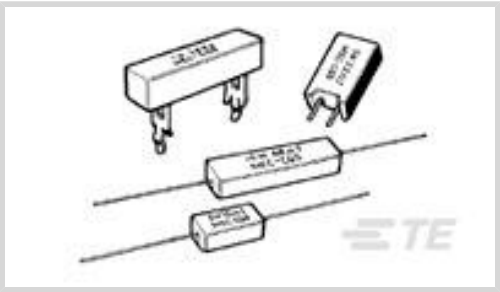




Passive Components > Resistors > Through-Hole Resistors > Wirewound Resistor: Horizontal Mount



Resistor Type: **Power Resistor**

Element Type: **Wire Wound**

Power Rating: **40 W**

Resistance Class: **Up to 1k $\Omega$**

Resistance Value: **15  $\Omega$**

[All Wirewound Resistor: Horizontal Mount \(157\)](#)

Features

Product Type Features

Resistor Type	Power Resistor
Element Type	Wire Wound

Configuration Features

Number of Resistors	1
---------------------	---

Electrical Characteristics

Power Rating	40 W
Resistance Class	Up to 1k $\Omega$
Resistance Value	15 $\Omega$
Passive Component Tolerance	5 %

Body Features

Lead Type	Radial-Leaded FASTON
-----------	----------------------

Termination Features

Number of Terminations	2
------------------------	---

Dimensions

Passive Component Dimensions	10.5 x 8 x 18 mm
------------------------------	------------------

Usage Conditions



Temperature Coefficient	$\pm 300$ ppm/ $^{\circ}\text{C}$
-------------------------	-----------------------------------

Packaging Features

Packaging Method	Loose Piece - Box
------------------	-------------------

Product Compliance

For compliance documentation, visit the product page on TE.com>

EU RoHS Directive 2011/65/EU	Compliant
EU ELV Directive 2000/53/EC	Compliant
China RoHS 2 Directive MIIT Order No 32, 2016	No Restricted Materials Above Threshold
EU REACH Regulation (EC) No. 1907/2006	Current ECHA Candidate List: JAN 2024 (240) Candidate List Declared Against: JAN 2024 (240) Does not contain REACH SVHC
Halogen Content	Low Halogen - Br, Cl, F, I < 900 ppm per homogenous material. Also BFR/CFR/PVC Free
Solder Process Capability	Wave solder capable to 265 $^{\circ}\text{C}$

Product Compliance Disclaimer

This information is provided based on reasonable inquiry of our suppliers and represents our current actual knowledge based on the information they provided. This information is subject to change. The part numbers that TE has identified as EU RoHS compliant have a maximum concentration of 0.1% by weight in homogenous materials for lead, hexavalent chromium, mercury, PBB, PBDE, DBP, BBP, DEHP, DIBP, and 0.01% for cadmium, or qualify for an exemption to these limits as defined in the Annexes of Directive 2011/65/EU (RoHS2). Finished electrical and electronic equipment products will be CE marked as required by Directive 2011/65/EU. Components may not be CE marked. Additionally, the part numbers that TE has identified as EU ELV compliant have a maximum concentration of 0.1% by weight in homogenous materials for lead, hexavalent chromium, and mercury, and 0.01% for cadmium, or qualify for an exemption to these limits as defined in the Annexes of Directive 2000/53/EC (ELV). Regarding the REACH Regulation, the information TE provides on SVHC in articles for this part number is based on the latest European Chemicals Agency (ECHA) 'Guidance on requirements for substances in articles' posted at this URL: <https://echa.europa.eu/guidance-documents/guidance-on-reach>

Compatible Parts



Also in the Series | CGS SQ



[Through-Hole Resistors\(662\)](#)

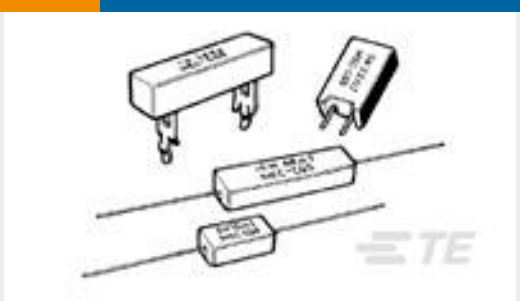
Customers Also Bought



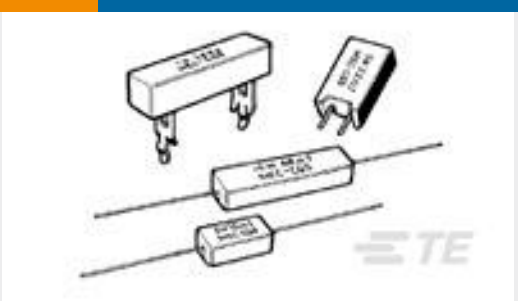
TE Part # 1625984-7  
HSA50 12R 5%



TE Part # 1971779-2  
PTL RECEPTACLE CONTACT, 12 AWG



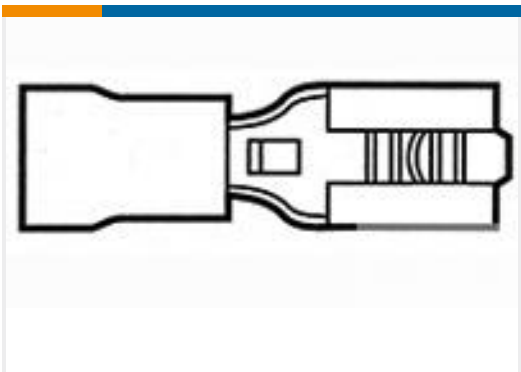
TE Part # 2-1623779-4  
SQB20 220R 5% (WIRE)



TE Part # 1879009-7  
SQB30 10R 5% 6.35MM FASTON



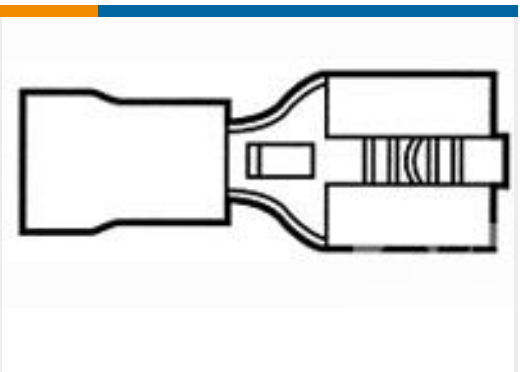
TE Part # 1-1879444-6  
Wirewound Resistor: Mineral, 2.5 Kw



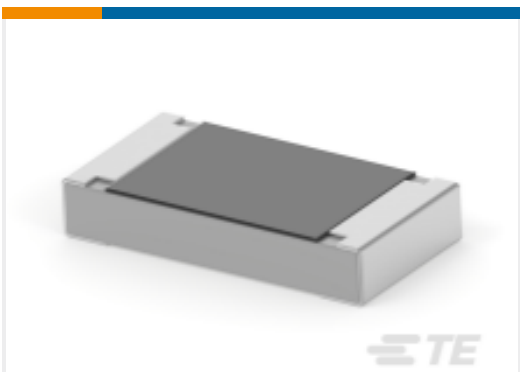
TE Part # 8-1377174-7  
SMP 9-0160483-1



TE Part # 3-794637-8  
08P MICRO MNL ASSY,VRT,SMT LF



TE Part # 9-1377174-1  
SMP 9-0160583-2



TE Part # 2176344-1  
CRGCO 1206 1R0 5%

Documents

Product Drawings

[SQB40 15R 5% \(WIRE\) 6.35MM FAS](#)

English

Datasheets & Catalog Pages

[4-1773460-6\\_RESISTIVE\\_SOLUTIONS\\_RAIL](#)

English

[1309350\\_PASSIVE\\_COMPONENT](#)

SQBW4015RJFASTON

Power Resistor, Wire Wound, 40 W, 15  $\Omega$ , 5 %,  $\pm 300$  ppm/ $^{\circ}\text{C}$ , Radial-Leaded  
FASTON, 10.5 x 8 x 18 mm, Loose Piece - Box, 2 Termination, CGS SQ



English

[8-1773459-4\\_POWER\\_FILTERING\\_AND\\_RESISTIVE\\_SOLUTIONS\\_FOR\\_ELEVATORS\\_AND\\_ESCALATORS](#)

English