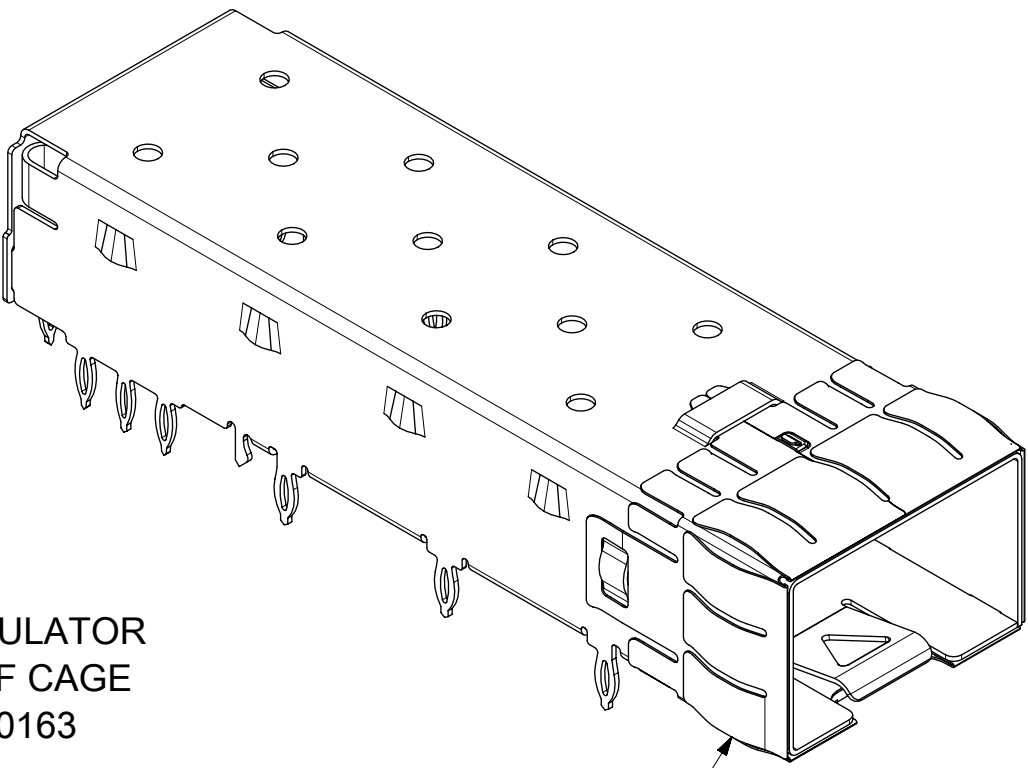
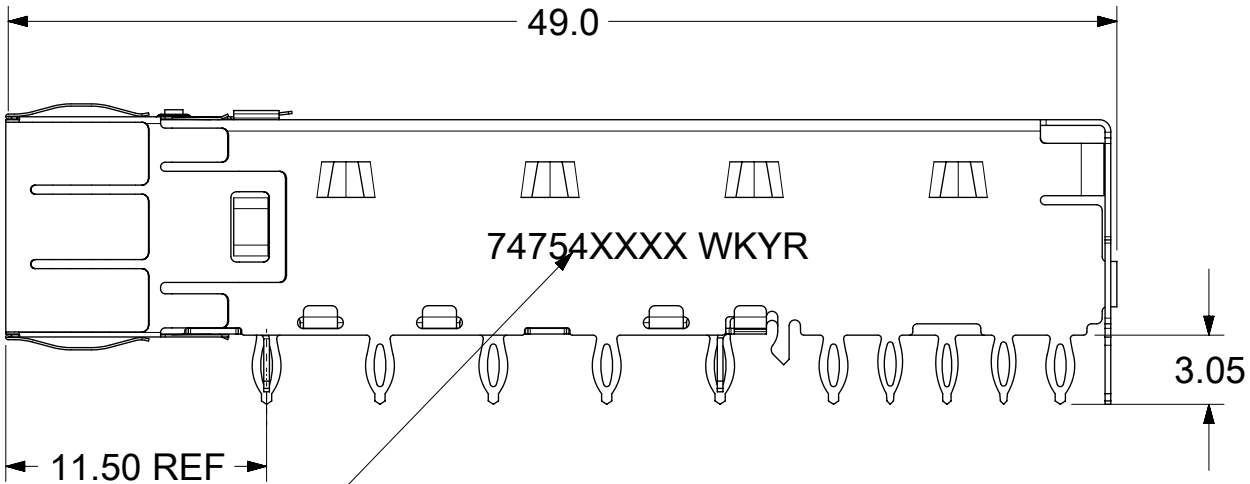
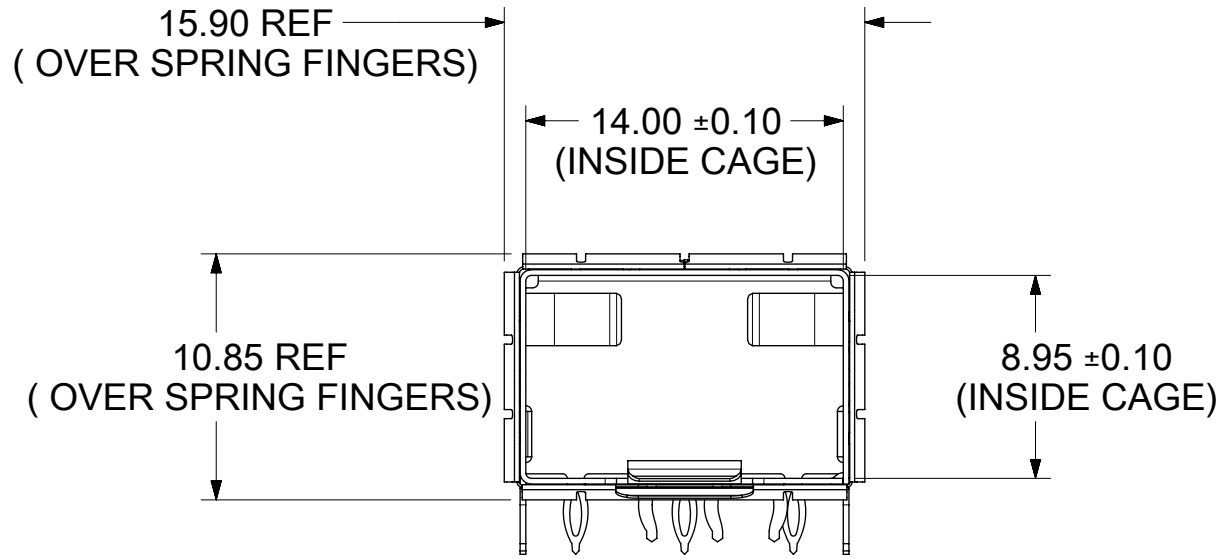


OPTIONAL POLYIMIDE INSULATOR  
ATTACHED TO BOTTOM OF CAGE  
MATERIAL NUMBER 747540163  
REFERENCE



EMI SPRING FINGER

SFP+ 1X1 CAGE					
PART NO.	POLYIMIDE INSULATOR	WELD POINT QUANTITY	PACKAGING	PLATING	SHEET
747540101	---	0	TRAY	NICKEL	1
747540108	---	6	TRAY	NICKEL	2
747548101	---	0	TAPE & REEL	NICKEL	1



COMPLETED / PARTIAL PART NO. AND WEEK/YEAR DATE  
CODE TO BE PRINTED / STAMPED ON THE SIDE OF  
COMPLETED CAGE ASSEMBLY APPROXIMATELY AS SHOWN.

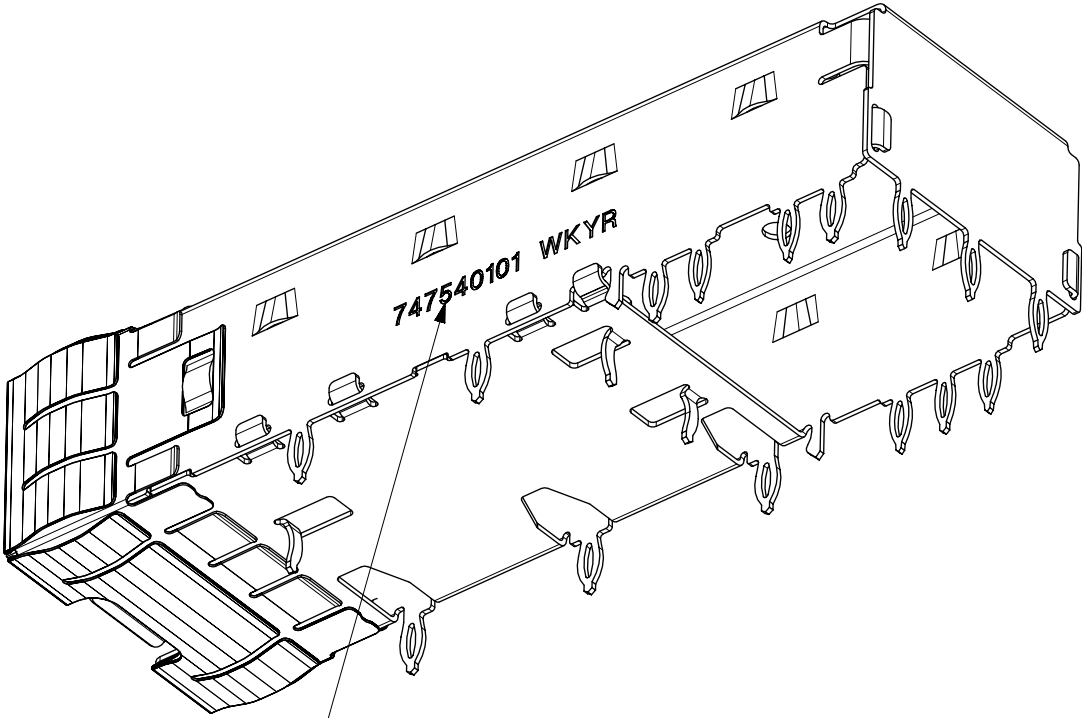
NOTES:

- MATERIAL:  
CAGE: COPPER ALLOY, THICKNESS 0.25mm, PLATING REFER TO TABLE.  
SPRING FINGER: NICKEL PLATED COPPER ALLOY, THICKNESS 0.10mm
- PRESS FIT LEGS 3.05 LONG -  
1.57 MINIMUM PCB THICKNESS FOR SINGLE SIDED USE
- OPTIONAL LIGHT PIPE ASSEMBLY AVAILABLE
- PORTS ARE DESIGNED FOR SFP+ TRANSCEIVERS AND ARE BACKWARDS  
COMPATIBLE WITH SFP TRANCEIVERS
- NO RoHS EXEMPTIONS

WEEK/YEAR DATE CODE TABLE	
WK	01 THRU 52 OR 53 EXAMPLE: 01 = FIRST WEEK OF YEAR 52 = LAST WEEK OF YEAR
YR	18, 19, 20 ETC. EXAMPLE: YEAR 2018 = 18

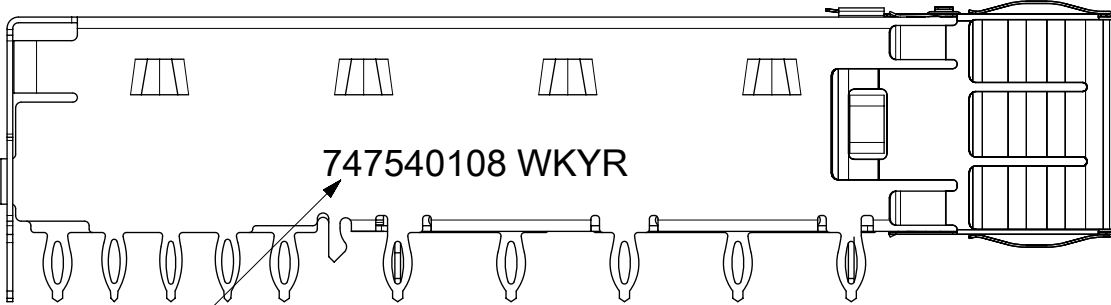
THIS DRAWING CONTAINS INFORMATION THAT IS PROPRIETARY TO MOLEX ELECTRONIC TECHNOLOGIES, LLC AND SHOULD NOT BE USED WITHOUT WRITTEN PERMISSION													
DIMENSION UNITS		SCALE		CURRENT REV DESC: OBSOLETED PART NUMBER AS PER PCN#509457.				<div>molex</div>					
mm		3:1											
GENERAL TOLERANCES (UNLESS SPECIFIED)				SFP+ 1X1 CAGE ASSY PRESS FIT, WITH EMI SPRING FINGERS									
ANGULAR TOL ± 0.5°													
4 PLACES		±		EC NO: 680890 DRWN: SANTHN 2021/05/20 CHK'D: GGA 2021/11/25 APPR: GGA 2021/11/25				PRODUCT CUSTOMER DRAWING					
3 PLACES		±											
2 PLACES		± 0.13											
1 PLACE		± 0.25		INITIAL REVISION: DRWN: MAZAM 2017/01/16 APPR: RCHEN08 2018/01/05				DOCUMENT NUMBER <div>747540101</div>		DOC TYPE	DOC PART	REVISION	
0 PLACES		±								PSD	ASY	M2	
DRAFT WHERE APPLICABLE MUST REMAIN WITHIN DIMENSIONS				THIRD ANGLE PROJECTION		DRAWING	SERIES	MATERIAL NUMBER		CUSTOMER		SHEET NUMBER	
						C-SIZE	74754	SEE P/N TABLE		GENERAL MARKET		1 OF 6	

DOCUMENT STATUS	P1	RELEASE DATE	2021/11/25	12:19:23
-----------------	----	--------------	------------	----------



MOLEX INTERNAL USE ONLY

747540108

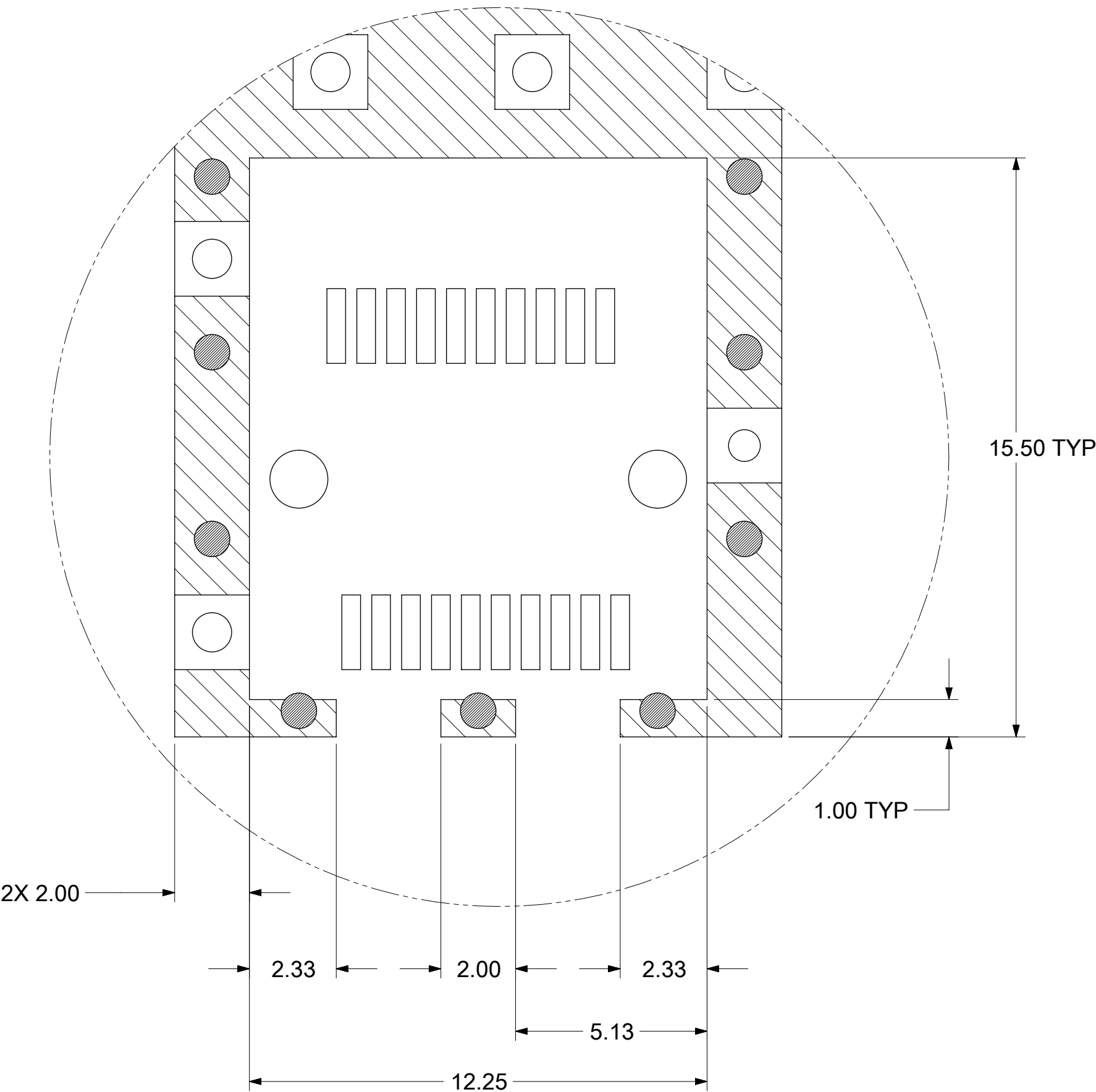
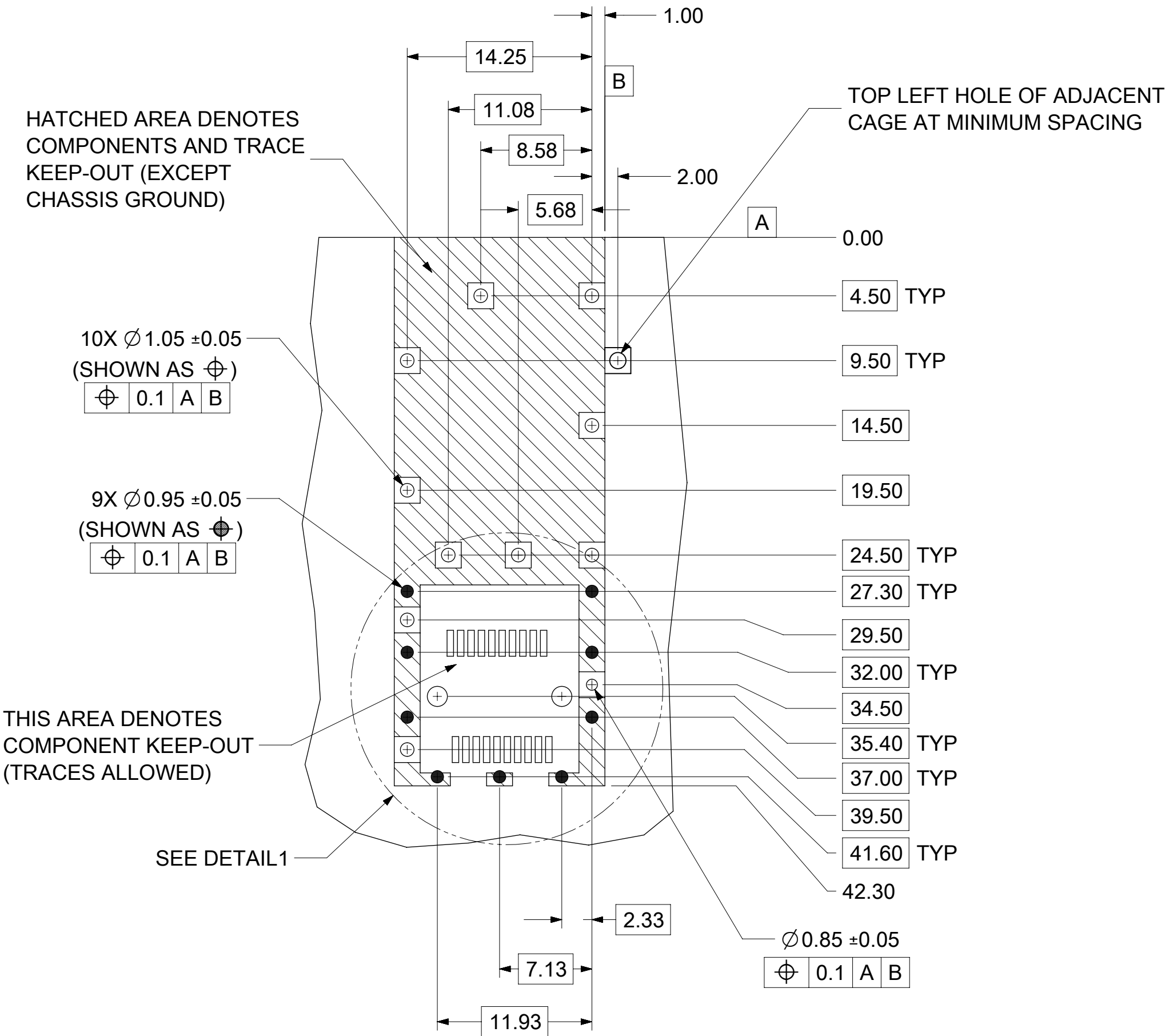


COMPLETED PART NO. AND WEEK/YEAR DATE  
CODE TO BE PRINTED ON THE SIDE OF  
COMPLETED CAGE ASSEMBLY APPROXIMATELY AS SHOWN.

THIS DRAWING CONTAINS INFORMATION THAT IS PROPRIETARY TO MOLEX ELECTRONIC TECHNOLOGIES, LLC AND SHOULD NOT BE USED WITHOUT WRITTEN PERMISSION												
DIMENSION UNITS		SCALE		CURRENT REV DESC: OBSOLETE PART NUMBER AS PER PCN#509457.					<div>molex</div>			
mm		5:1										
GENERAL TOLERANCES (UNLESS SPECIFIED)												
ANGULAR TOL		±	0.5 °	EC NO: 680890 DRWN: SANTHN 2021/05/20 CHK'D: GGA 2021/11/25 APPR: GGA 2021/11/25					SFP+ 1X1 CAGE ASSY PRESS FIT, WITH EMI SPRING FINGERS			
4 PLACES		±										
3 PLACES		±										
2 PLACES		±	0.13	INITIAL REVISION: DRWN: MAZAM 2017/01/16 APPR: RCHEN08 2018/01/05					PRODUCT CUSTOMER DRAWING			
1 PLACE		±	0.25									
0 PLACES		±										
DRAFT WHERE APPLICABLE MUST REMAIN WITHIN DIMENSIONS				THIRD ANGLE PROJECTION		DRAWING	SERIES	DOCUMENT NUMBER		DOC TYPE	DOC PART	REVISION
						C-SIZE	74754	747540101		PSD	ASY	M2
								MATERIAL NUMBER		CUSTOMER		SHEET NUMBER
								SEE P/N TABLE		GENERAL MARKET		2 OF 6

DOCUMENT STATUS	P1	RELEASE DATE	2021/11/25	12:19:23
-----------------	----	--------------	------------	----------

PCB LAYOUT FOR SINGLE SIDE MOUNT

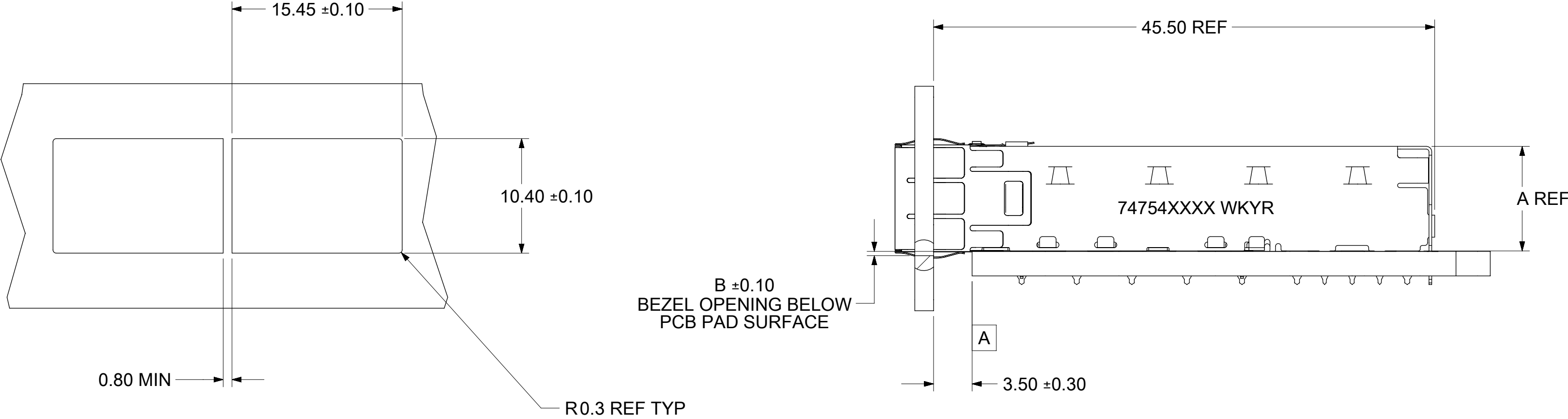


DETAIL 1  
SCALE 8:1  
HOST CONNECTOR DETAIL

- NOTES:
1. PADS AND VIAS CONNECT TO CHASSIS GROUND (RECOMMEND PADS TO BE 2.00mm SQUARE)
  2. RECOMMENDED THRU HOLE PLATING INCLUDES HASL, OSP, OR IMMERSION (GOLD, SILVER, OR TIN).
  3. CONNECTOR PAD LAYOUT PER SFP+ MSA WILL ACCOMMODATE MOLEX CONNECTOR SERIES 74441 OR EQUIVALENT.

THIS DRAWING CONTAINS INFORMATION THAT IS PROPRIETARY TO MOLEX ELECTRONIC TECHNOLOGIES, LLC AND SHOULD NOT BE USED WITHOUT WRITTEN PERMISSION												
DIMENSION UNITS		SCALE		CURRENT REV DESC: OBSOLETE PART NUMBER AS PER PCN#509457.				<div>molex</div>				
mm		3:1										
GENERAL TOLERANCES (UNLESS SPECIFIED)				EC NO: 680890 DRWN: SANTHN CHK'D: GGA APPR: GGA 2021/05/20 2021/11/25 2021/11/25				SFP+ 1X1 CAGE ASSY PRESS FIT, WITH EMI SPRING FINGERS				
ANGULAR TOL ± 0.5 °								PRODUCT CUSTOMER DRAWING				
4 PLACES		±		INITIAL REVISION: DRWN: MAZAM APPR: RCHEN08 2017/01/16 2018/01/05				DOCUMENT NUMBER		DOC TYPE	DOC PART	REVISION
3 PLACES		±						747540101		PSD	ASY	M2
2 PLACES		± 0.13		THIRD ANGLE PROJECTION				MATERIAL NUMBER		CUSTOMER		SHEET NUMBER
1 PLACE		± 0.25						SEE P/N TABLE		GENERAL MARKET		3 OF 6
0 PLACES		±				DRAWING		SERIES				
DRAFT WHERE APPLICABLE MUST REMAIN WITHIN DIMENSIONS						C-SIZE		74754				

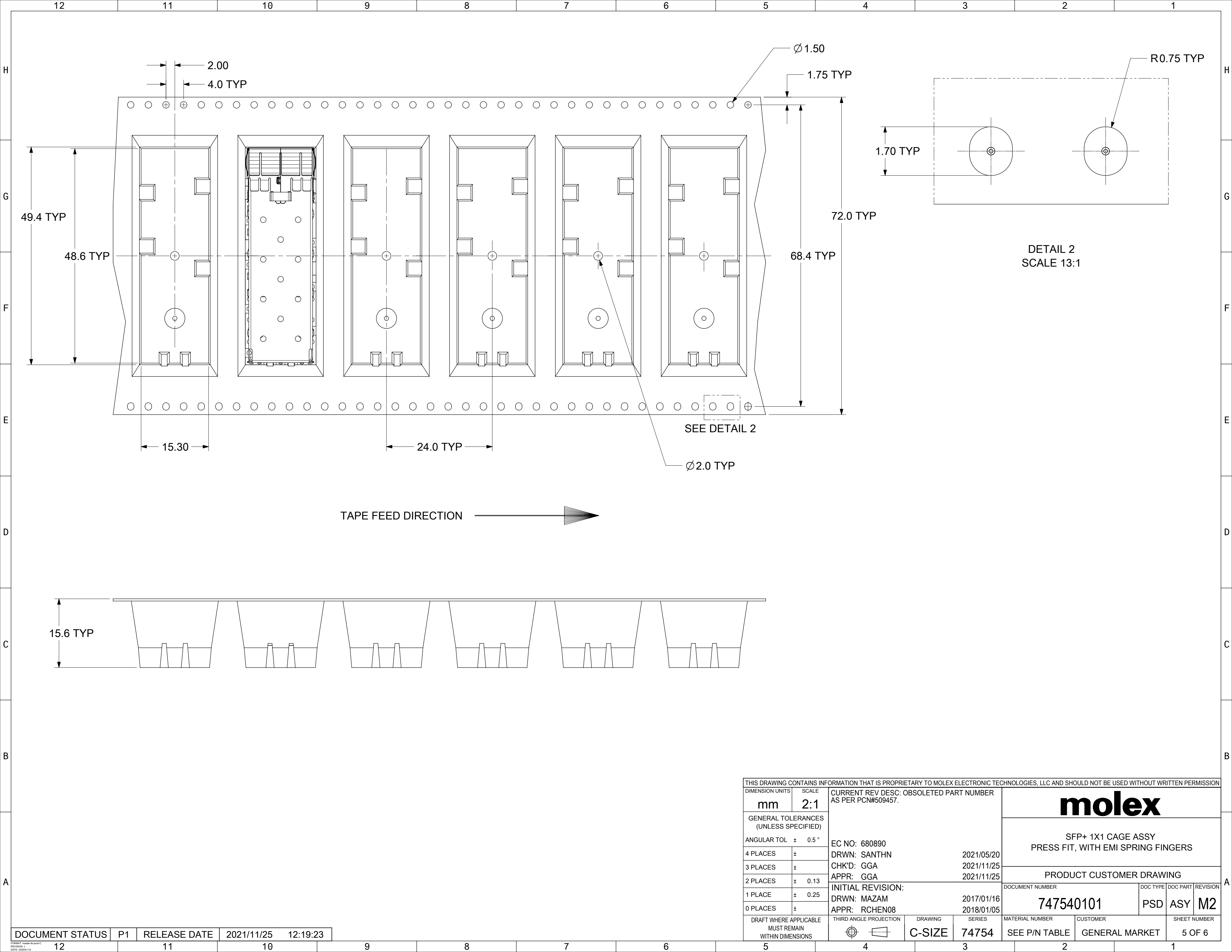
BEZEL AND BOARD POSITION DIMENSIONS FOR SINGLE SIDE MOUNTING  
(SPRING FINGER)



SFP+ 1X1 CAGE		
PART NO.	DIM A	DIM B
747540101	9.47	0.43
747540108	9.47	0.43
747548101	9.47	0.43

THIS DRAWING CONTAINS INFORMATION THAT IS PROPRIETARY TO MOLEX ELECTRONIC TECHNOLOGIES, LLC AND SHOULD NOT BE USED WITHOUT WRITTEN PERMISSION															
DIMENSION UNITS		SCALE		CURRENT REV DESC: OBSOLETE PART NUMBER AS PER PCN#509457.				<div>molex</div>							
mm		3:1													
GENERAL TOLERANCES (UNLESS SPECIFIED)				SFP+ 1X1 CAGE ASSY PRESS FIT, WITH EMI SPRING FINGERS											
ANGULAR TOL    ±    0.5 °															
4 PLACES		±										EC NO: 680890 DRWN: SANTHN			

DOCUMENT STATUS	P1	RELEASE DATE	2021/11/25	12:19:23
-----------------	----	--------------	------------	----------



THIS DRAWING CONTAINS INFORMATION THAT IS PROPRIETARY TO MOLEX ELECTRONIC TECHNOLOGIES, LLC AND SHOULD NOT BE USED WITHOUT WRITTEN PERMISSION													
DIMENSION UNITS		SCALE		CURRENT REV DESC: OBSOLETE PART NUMBER AS PER PCN#509457.				<div>molex</div> <div>SFP+ 1X1 CAGE ASSY PRESS FIT, WITH EMI SPRING FINGERS</div>					
mm		2:1											
GENERAL TOLERANCES (UNLESS SPECIFIED)													
ANGULAR TOL		±	0.5 °	EC NO: 680890 DRWN: SANTHN 2021/05/20 CHK'D: GGA 2021/11/25 APPR: GGA 2021/11/25				PRODUCT CUSTOMER DRAWING					
4 PLACES		±											
3 PLACES		±											
2 PLACES		±	0.13										
1 PLACE		±	0.25										
INITIAL REVISION:				DOCUMENT NUMBER <div>747540101</div>				DOC TYPE		DOC PART	REVISION		
DRWN: MAZAM 2017/01/16 APPR: RCHEN08 2018/01/05								PSD		ASY	M2		
DRAFT WHERE APPLICABLE MUST REMAIN WITHIN DIMENSIONS		THIRD ANGLE PROJECTION		DRAWING C-SIZE		SERIES 74754		MATERIAL NUMBER SEE P/N TABLE		CUSTOMER GENERAL MARKET		SHEET NUMBER 5 OF 6	

