

Han 24EMC/B-HBM-Rear Fit-DL

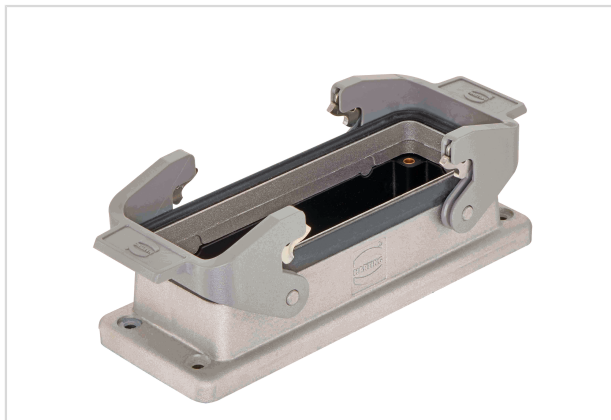


Image is for illustration purposes only. Please refer to product description.

Part number	09 62 824 0315
Specification	Han 24EMC/B-HBM-Rear Fit-DL
HARTING eCatalogue	https://b2b.harting.com/09628240315

Identification

Category	Hoods/Housings
Series of hoods/housings	Han [®] EMC/B
Type of hood/housing	Bulkhead mounted housing
Description of hood/housing	Rear mounting External seal
Type	Low construction

Version

Size	24 B
Locking type	Double locking lever
Han-Easy Lock [®]	Yes
Field of application	Hoods/Housings for higher EMC requirements
Pack contents	Mounting frame is included within the delivery

Technical characteristics

Limiting temperature	-40 ... +125 °C
Degree of protection acc. to IEC 60529	IP66
Type rating acc. to UL 50 / UL 50E	4 12

Material properties

Material (hood/housing)	Aluminium die-cast
Surface (hood/housing)	Uncoated
Colour (hood/housing)	Unpainted



Pushing Performance
Since 1945

Material properties

Material (seal)	NBR
Material (locking)	Polycarbonate (PC) Stainless steel
Colour (locking)	RAL 7037 (dust grey)
Material (accessories)	Polyamide (PA) Stainless steel
Material flammability class acc. to UL 94 (locking levers)	V-0
RoHS	compliant
ELV status	compliant
China RoHS	e
REACH Annex XVII substances	Not contained
REACH ANNEX XIV substances	Not contained
REACH SVHC substances	Yes
REACH SVHC substances	Potassium 1,1,2,2,3,3,4,4,4-nonafluorobutane-1-sulphonate
Fire protection on railway vehicles	EN 45545-2 (2020-08)

Specifications and approvals

Approvals	DNV GL
UL / CSA	UL 1977 ECBT2.E235076 CSA-C22.2 No. 182.3 ECBT8.E235076
CE	Yes

Commercial data

Packaging size	1
Net weight	137.1 g
Country of origin	China
European customs tariff number	85389099
eCl@ss	27440202 Shell for industrial connectors