

# Han Guiding Relay module, male

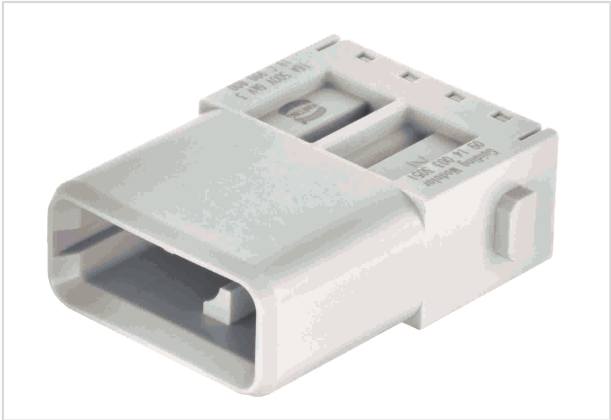


Image is for illustration purposes only. Please refer to product description.

Part number	09 14 003 3051
Specification	Han Guiding Relay module, male
HARTING eCatalogue	<a href="https://b2b.harting.com/09140033051">https://b2b.harting.com/09140033051</a>

## Identification

Category	Modules
Series	Han-Modular®
Type of module	Han® Guiding module
Size of the module	Single module
Description of the module	Relay module
Features	2 contacts with relay function (last mate - first break) Enables other power contacts to be switched off via a relay and thus offers greater safety in the event of a fault (when used as intended, the connector must not be plugged in or disconnected under voltage / load)

## Version

Termination method	Crimp termination
Gender	Male
Number of contacts	3
Details	Please order crimp contacts separately.

## Technical characteristics

Conductor cross-section	0.14 ... 4 mm²
Rated current	16 A
Rated voltage	500 V
Rated impulse voltage	6 kV
Pollution degree	3
Insulation resistance	>10 <sup>10</sup> Ω
Limiting temperature	-40 ... +125 °C



**Pushing Performance**  
Since 1945

## Technical characteristics

Mating cycles	≥500
Lock-in range	±4 mm

## Material properties

Material (insert)	Polycarbonate (PC)
Colour (insert)	RAL 7032 (pebble grey)
Material flammability class acc. to UL 94	V-0
RoHS	compliant
ELV status	compliant
China RoHS	e
REACH Annex XVII substances	Not contained
REACH ANNEX XIV substances	Not contained
REACH SVHC substances	Not contained
California Proposition 65 substances	Not contained
Fire protection on railway vehicles	EN 45545-2 (2020-08)
Requirement set with Hazard Levels	R22 (HL 1-3) R23 (HL 1-3)

## Specifications and approvals

Specifications	EN 60664-1 IEC 61984
----------------	-------------------------

## Commercial data

Packaging size	2
Net weight	15.1 g
Country of origin	China
European customs tariff number	85389099
eCl@ss	27440217 Module for industrial connectors (power/signals)