

Han 10M HBM Rear-Fit DL

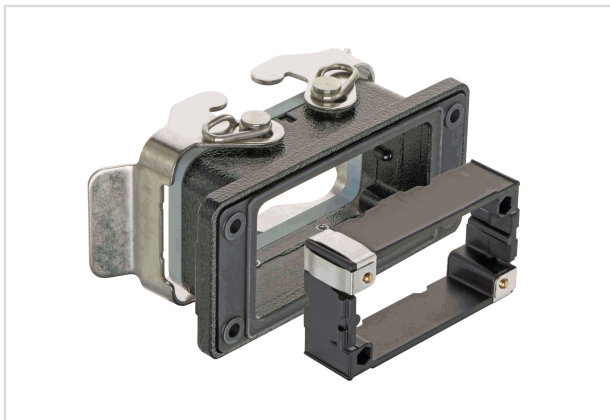


Image is for illustration purposes only. Please refer to product description.

Part number	09 37 010 0391
Specification	Han 10M HBM Rear-Fit DL
HARTING eCatalogue	https://b2b.harting.com/09370100391

Identification

Category	Hoods/Housings
Series of hoods/housings	Han [®] M
Type of hood/housing	Bulkhead mounted housing
Description of hood/housing	Rear mounting
Type	Low construction

Version

Size	10 B
Locking type	Double locking lever
Field of application	Hoods/housings for rough environments
Pack contents	Mounting frame is included within the delivery

Technical characteristics

Limiting temperature	-40 ... +125 °C
Degree of protection acc. to IEC 60529	IP66
Type rating acc. to UL 50 / UL 50E	4
	4X
	12

Material properties

Material (hood/housing)	Aluminium die-cast
Surface (hood/housing)	Powder-coated
Colour (hood/housing)	RAL 9005 (jet black)
Material (seal)	FPM



Pushing Performance
Since 1945

Material properties

Material (locking)	Stainless steel
Material (accessories)	Polyamide (PA) Stainless steel
RoHS	compliant
ELV status	compliant
China RoHS	e
REACH Annex XVII substances	Not contained
REACH ANNEX XIV substances	Not contained
REACH SVHC substances	Not contained
Fire protection on railway vehicles	EN 45545-2 (2020-08)
Requirement set with Hazard Levels	R1 (HL 1-3) R7 (HL 1-3)

Specifications and approvals

Approvals	DNV GL
UL / CSA	UL 1977 ECBT2.E235076 CSA-C22.2 No. 182.3 ECBT8.E235076
CE	Yes

Commercial data

Packaging size	1
Country of origin	China
European customs tariff number	85389099
eCl@ss	27440202 Shell for industrial connectors