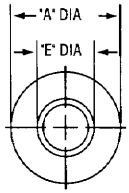


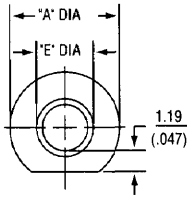
## INSULATING SHOULDER WASHERS

- 40% glass-filled polyphenylene sulfide (PPS).
- Chemically inert [no known solvents under 200°C (392°F)].
- Maximum recommended service temperature of 260°C (500°F).
- Recommended torque is .565Nm to .678Nm (5 to 6 inch-pounds) on all shoulder washers except -7, which has recommended torque of .452Nm (4 inch-pounds.)

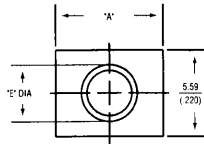
▼ FIGURE 1



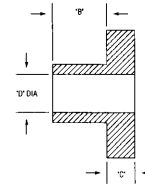
▼ FIGURE 2



▼ FIGURE 3



**Note:** This figure is common to figures 1, 2, and 3.



**Note:** A single gate extension, not to exceed .64mm (.025") in length, is allowable on the outside of all shoulder washers.

### POLYPHENYLENE SULFIDE SHOULDER WASHERS

Model	A	B	C	D	E	Screw Size	Fig
7721-1PPS	7.11 (.280)	3.18 (.125)	1.07 (.042)	2.84 (.112)	3.81 (.150)	4	1
7721-2PPS	7.11 (.280)	4.70 (.185)	1.07 (.042)	2.84 (.112)	3.81 (.150)	4	1
7721-3PPS	7.11 (.280)	3.18 (.125)	1.07 (.042)	2.84 (.112)	3.56 (.140)	4	1
7721-4PPS	7.92 (.312)	.79 (.031)	1.19 (.047)	3.71 (.146)	4.83 (.190)	6	1
7721-5PPS	7.92 (.312)	.79 (.031)	1.19 (.047)	3.66 (.144)	4.50 (.177)	6	1
7721-6PPS	7.11 (.280)	.79 (.031)	1.19 (.047)	3.00 (.118)	3.68 (.145)	4	1
7721-7PPS *	5.46 (.215)	.81 (.032)	1.02 (.040)	2.95 (.116)	3.43 (.135)	4	1
7721-8PPS	6.22 (.245)	1.02 (.040)	1.02 (.040)	3.02 (.119)	3.56 (.140)	4	2
7721-9PPS	7.62 (.300)	1.22 (.048)	1.40 (.055)	2.97 (.117)	3.56 (.140)	4 **	3
7721-10PPS	7.62 (.300)	2.41 (.095)	1.40 (.055)	2.97 (.117)	3.56 (.140)	4 **	3

\* Design allows insertion in the tab of a TO-220. \*\* Also for 3mm.

### NYLON SHOULDER WASHERS

Model	A	B	C	D	E
7721-11N	7.80/8.05 (.307/.317)	2.87/3.00 (.113/.118)	3.56/3.81 (.140/.150)	3.76/3.89 (.148/.153)	1.09/1.35 (.043/.053)
Formerly Motorola part number B51547F003					
7721-12N	9.40/9.65 (.370/.380)	3.84/4.09 (.151/.161)	2.16/2.41 (.085/.095)	6.10/6.35 (.240/.250)	1.02/1.27 (.040/.050)
Formerly Motorola part number B51547F005					
7721-13N	5.89/6.05 (.232/.238)	2.87/3.00 (.113/.118)	—	3.43/3.56 (.135/.140)	1.19/1.40 (.047/.055)
Formerly Motorola part number B51547F011					
7721-14N	6.40/6.60 (.252/.260)	2.90/3.10 (.114/.122)	2.69/2.90 (.106/.114)	3.89/4.09 (.153/.161)	—
Formerly Motorola part number B51547F018					
7721-15N	5.59/6.10 (.220/.240)	2.90/2.95 (.114/.116)	1.73/1.91 (.068/.075)	3.43/3.58 (.135/.141)	.51/.64 (.020/.025)
Formerly Motorola part number B51547F019					
Material is Nylon type 6					

