

PART NAME

NEMA 4X ENCLOSURE

PART No.

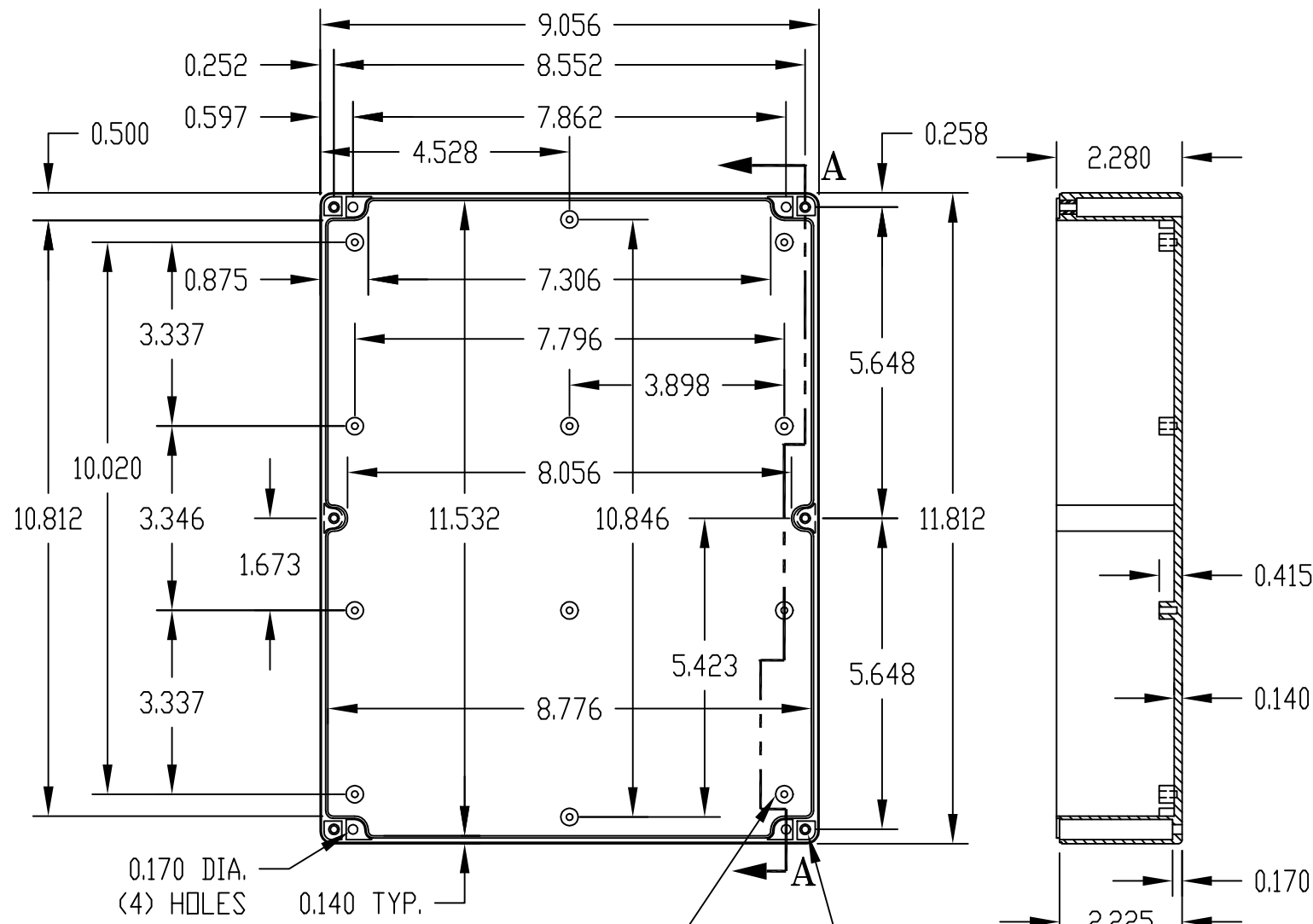
PN-1343, PN-1343-C AND PN-1343-DG

REV. DATE

11-17-08

INDUSTRY STANDARDS:

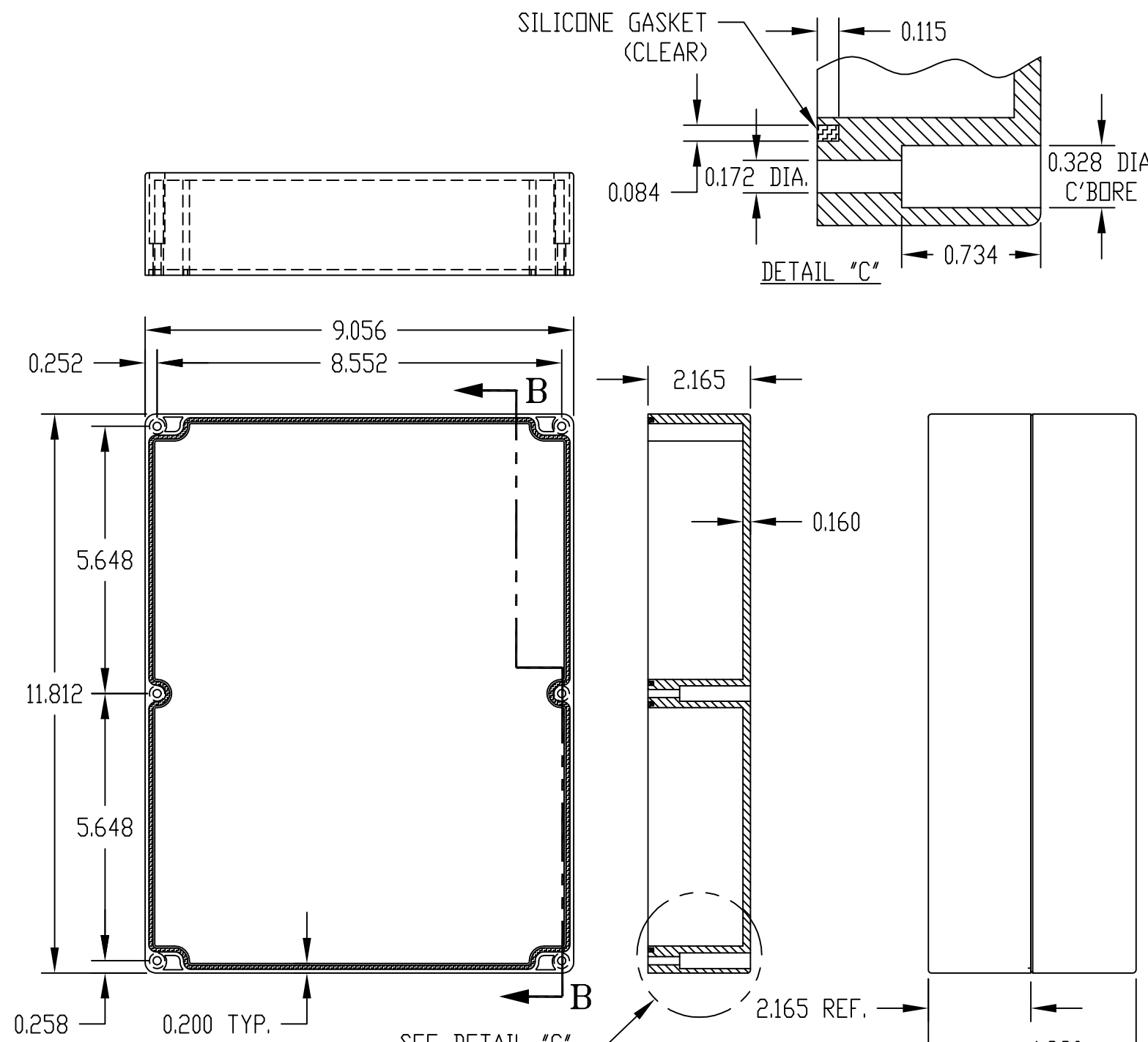
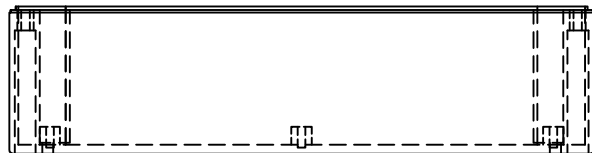
POLYCARBONATE (LIGHT GRAY AND CLEAR)  
 UL94-HB FLAMMABILITY RATING (UL FILE #E41613)  
 UV STABILIZED  
 SERVICE TEMPERATURE RANGE: -40°C TO +120°C  
 ABS (DARK GRAY)  
 UL94-HB FLAMMABILITY RATING (ULFILE #E560700)  
 SERVICE TEMPERATURE RANGE: -40°C TO +80°C



0.315 DIA. BOSS WITH  
 0.120 DIA. HOLE x 0.320 DEEP  
 (12) PLACES  
 MOUNTING BOSSES USE EITHER  
 M3 METRIC OR #6 STD. SHEET  
 METAL SCREWS x 0.312 LG.  
 (NOT SUPPLIED)

M4 x 0.315 LG.  
 THREADED INSERT  
 (6) PLACES

BODY



COVER

SEE DETAIL "C"

SECTION "B-B"

NOTE: ALL DIMENSIONS HAVE ±0.015 TOLERANCE UNLESS OTHERWISE SPECIFIED.

PART NUMBER	MATERIAL		FINISH		HARDWARE KIT
	BODY	COVER	BODY	COVER	
PN-1343	POLYCARBONATE		LIGHT GRAY		KIT CONTAINS (6) M4 x 25mm (1.000") LG. SCREWS FOR ASSEMBLY
PN-1343-C	POLYCARBONATE		LIGHT GRAY	CLEAR	
PN-1343-DG	HIGH-IMPACT ABS		DARK GRAY		