

## Han 6 HPR Base Panel Screw locking

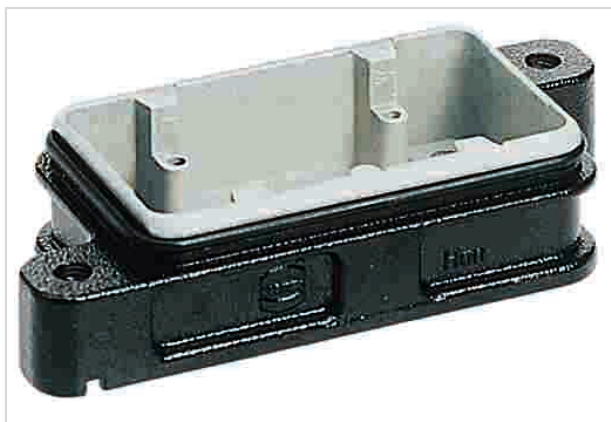


Image is for illustration purposes only. Please refer to product description.

Part number	09 40 006 0311
Specification	Han 6 HPR Base Panel Screw locking
HARTING eCatalogue	<a href="https://b2b.harting.com/09400060311">https://b2b.harting.com/09400060311</a>

### Identification

Category	Hoods/Housings
Series of hoods/housings	Han® HPR
Type of hood/housing	Bulkhead mounted housing

### Version

Size	6 B
Locking type	Screw locking
Field of application	Hoods/housings for harsh outdoor environments

### Technical characteristics

Tightening torque (screw locking)	4 Nm
Limiting temperature	-40 ... +125 °C
Degree of protection acc. to IEC 60529	IP65 IP68 IP69 / IPX9K acc. to ISO 20653
Type rating acc. to UL 50 / UL 50E	4 4X 12

### Material properties

Material (hood/housing)	Aluminium die-cast Corrosion resistant
Surface (hood/housing)	Powder-coated
Colour (hood/housing)	RAL 9005 (jet black)
Material (seal)	NBR



**Pushing Performance**  
Since 1945

## Material properties

RoHS	compliant
ELV status	compliant
China RoHS	e
REACH Annex XVII substances	Not contained
REACH ANNEX XIV substances	Not contained
REACH SVHC substances	Not contained
California Proposition 65 substances	Yes
California Proposition 65 substances	Nickel Naphthalene
Fire protection on railway vehicles	EN 45545-2 (2020-08)
Requirement set with Hazard Levels	R1 (HL 1-3) R7 (HL 1-3)

## Specifications and approvals

Approvals	DNV GL
UL / CSA	UL 1977 ECBT2.E235076 CSA-C22.2 No. 182.3 ECBT8.E235076
CE	Yes

## Commercial data

Packaging size	1
Net weight	155.6 g
Country of origin	Germany
European customs tariff number	85389099
eCl@ss	27440202 Shell for industrial connectors