



Audio Video Development Kit, Stratix IV GX Edition

User Guide



101 Innovation Drive
San Jose, CA 95134
www.altera.com

UG-01066-2.0

Copyright © 2009 Altera Corporation. All rights reserved. Altera, The Programmable Solutions Company, the stylized Altera logo, specific device designations, and all other words and logos that are identified as trademarks and/or service marks are, unless noted otherwise, the trademarks and service marks of Altera Corporation in the U.S. and other countries. All other product or service names are the property of their respective holders. Altera products are protected under numerous U.S. and foreign patents and pending applications, maskwork rights, and copyrights. Altera warrants performance of its semiconductor products to current specifications in accordance with Altera's standard warranty, but reserves the right to make changes to any products and services at any time without notice. Altera assumes no responsibility or liability arising out of the application or use of any information, product, or service described herein except as expressly agreed to in writing by Altera. Altera customers are advised to obtain the latest version of device specifications before relying on any published information and before placing orders for products or services.



Chapter 1. About This Kit

Introduction	1-1
Kit Features	1-1
Hardware	1-1
Software	1-2

Chapter 2. Getting Started

Introduction	2-1
Before You Begin	2-1
Inspect the Boards	2-1
References	2-1

Chapter 3. Software Installation

Introduction	3-1
Installing the Altera Complete Design Suite	3-1
Licensing Considerations	3-1
Installing the Audio Video Development Kit, Stratix IV GX Edition	3-2
Installing the USB-Blaster Driver	3-2

Chapter 4. Development Board Setup

Introduction	4-1
Setting Up the Board	4-1
Factory Default Switch Settings	4-2

Chapter 5. Board Update Portal

Introduction	5-1
Connecting to the Board Update Portal Web Page	5-1
Using the Board Update Portal to Update User Designs	5-2

Chapter 6. Board Test System

Introduction	6-1
Preparing the Board	6-3
Running the Board Test System	6-3

Using the Board Test System	6-3
The Configure Menu	6-4
The Config Tab	6-4
MAX II Registers	6-4
JTAG Chain	6-5
Board Information	6-5
Flash Memory Map	6-6
The GPIO Tab	6-6
LCD	6-6
User DIP Switch	6-7
User LEDs	6-7
Push Button Switches	6-7
The SRAM&Flash Tab	6-7
SRAM	6-8
Flash	6-9
The DDR3 Tab	6-9
Port	6-10
Start	6-10
Stop	6-10
Performance Indicators	6-10
Error Control	6-11
Number of Addresses to Write andRead	6-11
Data Type	6-11
Read and Write Control	6-11
The QDRII+ Tab	6-11
Port	6-12
Start	6-12
Stop	6-12
Performance Indicators	6-12
Error Control	6-13
Number of Addresses to Write and Read	6-13
Data Type	6-13
The HSMC Tab	6-13
Status	6-14
Data Type	6-15
Error Control	6-15
Start	6-15
Stop	6-15
Performance Indicators	6-15
The Video Tab	6-16
HDMI	6-16
SDI	6-17
The SDI HSMC - PRBS Tab	6-18
Start	6-19
Stop	6-19
AES in1	6-19
AES in2	6-20
SDI in1	6-20
SDI in2	6-20
The SDI HSMC - Video Tab	6-20
Pattern Generator	6-21
Receiver Status	6-22

The Power Monitor	6-22
General Information	6-23
Temperature Information	6-24
Power Information	6-24
12V Power Consumption	6-24
Power Graph	6-24
Graph Settings	6-24
Reset	6-24
Calculating Power	6-25
The Clock Control	6-25
Serial Port Registers	6-26
fXTAL	6-26
Disable Oscillator	6-26
Target Frequency	6-26
Reset Si570	6-27
Set New Frequency	6-27
Configuring the FPGA Using the Quartus II Programmer	6-27

Appendix A. Programming the Flash Memory Device

Introduction	A-1
CFI Flash Memory Map	A-1
Preparing Design Files for Flash Programming	A-2
Creating Flash Files Using the Nios II EDS	A-2
Programming Flash Memory Using the Board Update Portal	A-3
Programming Flash Memory Using the Nios II EDS	A-3
Restoring the Flash Device to the Factory Settings	A-4
Restoring the MAX II CPLD to the Factory Settings	A-5

Additional Information

Revision History	Info-1
How to Contact Altera	Info-1
Typographic Conventions	Info-1

Introduction


The Altera® Audio Video Development Kit, Stratix® IV GX Edition is a complete design environment that includes both the hardware and software you need to develop Stratix IV GX FPGA designs. The PCI-SIG-compliant board, the serial digital interface (SDI) high-speed mezzanine card (HSMC), and the one-year license for the Quartus® II software provide everything you need to begin developing custom Stratix IV GX FPGA designs. The following list describes what you can accomplish with the development kit:

- Develop and test PCI Express 2.0 designs
- Develop and test memory subsystems consisting of DDR3 and QDR II+ memories
- Build designs capable of migrating to Altera's low-cost HardCopy® IV ASICs
- Develop and test SDI and Audio Engineering Society (AES) designs using the SDI HSMC in conjunction with the host development platform
- Take advantage of the modular and scalable design by using the second HSMC connector to interface to over 20 different HSMCs provided by Altera partners, supporting protocols such as Serial RapidIO®, 10 Gigabit Ethernet, SONET, Common Public Radio Interface (CPRI), Open Base Station Architecture Initiative (OBSAI) and others

Kit Features




This section briefly describes the Audio Video Development Kit, Stratix IV GX Edition contents.

Hardware

- Stratix IV GX FPGA development board—A development platform that allows you to develop and prototype hardware designs running on the Stratix IV GX EP4SGX230 FPGA.
 - For detailed information about the board components and interfaces, refer to the [Stratix IV GX FPGA Development Board Reference Manual](#).
 - SDI HSMC - A daughtercard that features two SDI channels, two AES channels, and clocking options to enable the development and testing of SDI and AES designs.
-  For detailed information about the SDI HSMC components and interfaces, refer to the [SDI HSMC Reference Manual](#).

- Power supply and cables—The development kit includes the following items:
 - Power supply and AC adapters for North America/Japan, Europe, and the United Kingdom
 - USB cable
 - Ethernet cable
 - SMB cable
 - BNC cable

Software

- Altera Complete Design Suite DVD—A DVD that includes the following items:
 - Quartus II Software—The Quartus II software, including the SOPC Builder system development tool, provides a comprehensive environment for system-on-a-programmable-chip (SOPC) design. The Quartus II software integrates into nearly any design environment and provides interfaces to industry-standard EDA tools.
 -  The kit includes a development kit edition (DKE) license for the Quartus II software (Windows platform only). This license entitles you to all the features of the subscription edition for a period of one year. After the year, you must purchase a renewal subscription to continue using the software. For more information, refer to the Altera website (www.altera.com).
 - MegaCore® IP Library—A library that contains Altera IP MegaCore functions. You can evaluate MegaCore functions by using the OpenCore Plus feature to do the following:
 - Simulate behavior of a MegaCore function within your system
 - Verify functionality of your design, and quickly and easily evaluate its size and speed
 - Generate time-limited device programming files for designs that include MegaCore functions
 - Program a device and verify your design in hardware
 -  The OpenCore Plus hardware evaluation feature is an evaluation tool for prototyping only. You must purchase a license to use a MegaCore function in production.
 -  For more information about OpenCore Plus, refer to *AN 320: OpenCore Plus Evaluation of Megafunctions*.
 - Nios® II Embedded Design Suite (EDS)—A full-featured set of tools that allow you to develop embedded software for the Nios II processor which you can include in your Altera FPGA designs.
- Audio Video Development Kit, Stratix IV GX Edition CD-ROM—A CD-ROM that includes all the documentation and design examples for the kit.


 Use the following links to check the Altera website to ensure you have the latest software versions:

- For the Altera Complete Design Suite, refer to the [Quartus II Subscription Edition Download](#) page.
- For the Audio Video Development Kit, Stratix IV GX Edition, refer to the [Audio Video Development Kit, Stratix IV GX Edition](#) page.

Introduction

This user guide leads you through the following Stratix IV GX FPGA development board with SDI HSMC daughtercard setup steps:

- Inspecting the contents of the kit
- Installing the Altera Complete Design Suite DVD software
- Setting up, powering up, and verifying correct operation of the development board
- Configuring the Stratix IV GX FPGA
- Running the Board Test System designs

 For complete information about the development board, refer to the [Stratix IV GX FPGA Development Board Reference Manual](#).

Before You Begin

Before using the kit or installing the software, check the kit contents and inspect the boards to verify that you received all of the items listed in this section. If any of the items are missing, contact Altera before you proceed.

Inspect the Boards

To inspect each board, perform the following steps:

1. Place the board on an anti-static surface and inspect it to ensure that it has not been damaged during shipment.



Without proper anti-static handling, you can damage the board.

2. Verify that all components are on the board and appear intact.



In typical applications with the Stratix IV GX FPGA development board, a heat sink is not necessary. However, under extreme conditions or for engineering sample silicon the board might require additional cooling to stay within operating temperature guidelines. You can perform power consumption and thermal modeling to determine whether your application requires additional cooling.



For more information about power consumption and thermal modeling, refer to [AN 358: Thermal Management for FPGAs](#).

References

Use the following links to check the Altera website for the following other related information:

- For the latest board design files and reference designs, refer to the [Audio Video Development Kit, Stratix IV GX Edition](#) page.
- For additional daughter cards available for purchase, refer to the [Development Board Daughtercards](#) page.
- For the Stratix IV GX device documentation, refer to the [Literature: Stratix IV Devices](#) page.
- To purchase devices from the eStore, refer to the [Devices](#) page.
- For Stratix IV GX OrCAD symbols, refer to the [Capture CIS Symbols](#) page.
- For Nios II 32-bit embedded processor solutions, refer to the [Embedded Processing](#) page.

Introduction

This section explains how to install the following software:

- Altera Complete Design Suite
- Audio Video Development Kit, Stratix IV GX Edition
- USB-Blaster™ driver

Installing the Altera Complete Design Suite

The Altera Complete Design Suite provides the necessary tools used for developing hardware and software for Altera FPGAs. Included on the Altera Complete Design Suite DVD are the Quartus II software and the Nios II EDS. The Quartus II software (including SOPC Builder) and the Nios II EDS are the primary FPGA development tools used to create the reference designs in this development kit. To install the Altera software tools, perform the following steps:

1. Insert the Altera Complete Design Suite DVD into your computer.
2. Follow the installer instructions to complete the installation process.

 If you have difficulty installing the Quartus II software, refer to *Quartus II Installation & Licensing for Windows and Linux Workstations*.

Licensing Considerations

Before using the Quartus II software, you must request a license file from the [Altera Licensing](#) page of the Altera website and install it on your computer. When you request a license file, Altera emails you a **license.dat** file that enables the software.

To license the Quartus II software, you need your computer's network interface card (NIC) ID, a number that uniquely identifies your computer. On the computer you use to run the Quartus II software, type `ipconfig /all` at a command prompt to determine the NIC ID. Your NIC ID is the 12-digit hexadecimal number on the **Physical Address** line.

To obtain a license, perform the following steps.

1. Go to the [Get My Altera License](#) page of the Altera website.
2. Under **Development Kit Licenses Request**, click **Licenses for RoHS-Compliant Kits**.
3. Follow the on-screen instructions to request your license. Altera sends you a license file through email.
4. To install your license, refer to *Specifying the License File* in *Quartus II Installation & Licensing for Windows and Linux Workstations*.

Installing the Audio Video Development Kit, Stratix IV GX Edition

To install the Audio Video Development Kit, Stratix IV GX Edition, perform the following steps:

1. Insert the Audio Video Development Kit, Stratix IV GX Edition CD-ROM into your computer.

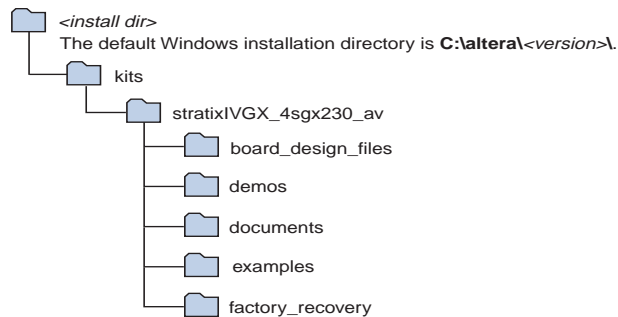


The CD-ROM should start an auto-install process. If it does not, browse to the CD-ROM drive and double-click on the **setup.exe** file.

2. Follow the on-screen instructions to complete the installation process.

The installation program creates the directory structure for the Audio Video Development Kit, Stratix IV GX Edition files shown in [Figure 3-1](#).

Figure 3-1. Audio Video Development Kit, Stratix IV GX Edition Installed Directory Structure (1)



Note to Figure 3-1:

(1) Early-release (engineering silicon) versions might have slightly different directory names.

[Table 3-1](#) lists the file directory names and a description of their contents.

Table 3-1. Installed Directory Contents

Directory Name	Description of Contents
board_design_files	Contains schematic, layout, assembly, and bill of material board design files. Use these files as a starting point for a new prototype board design.
demos	Contains demonstration applications.
documents	Contains the development kit documentation.
examples	Contains the sample design files for the Audio Video Development Kit, Stratix IV GX Edition.
factory_recovery	Contains the original data programmed onto the board before shipment. Use this data to restore the board with its original factory contents.

Installing the USB-Blaster Driver

The Stratix IV GX FPGA development board includes integrated USB-Blaster circuitry for FPGA programming. However, for the host computer and board to communicate, you must install the USB-Blaster driver on the host computer.

- Installation instructions for the USB-Blaster driver for your operating system are available on the Altera website. On the [Altera Programming Cable Driver Information](#) page of the Altera website, locate the table entry for your configuration and click the link to access the instructions.

Introduction

The instructions in this chapter explain how to set up the Stratix IV GX FPGA development board.

Setting Up the Board

To set up and power up the board, perform the following steps:

1. The Stratix IV GX FPGA development board ships with its board switches preconfigured to support the example designs in the development kit. If you suspect your board might not be currently configured with the default settings, follow the instructions in [“Factory Default Switch Settings” on page 4–2](#) to return the board to its factory settings before proceeding.
2. The development board ships with example designs stored in the flash memory device. Verify the rotary switch (SW2) is set to the 0 position to load the design stored in the factory portion of flash memory. [Figure 4–1](#) shows the rotary switch location on the Stratix IV GX FPGA development board.
3. Connect the SDI HSMC to the host board by performing the following steps:
 - a. Attach two standoffs at the corners of the SDI HSMC opposite the HSMC connector. Place the standoffs under the board and hand-fasten screws from the top through the holes adjacent to the AES audio BNC connectors J15 and J3.
 - b. Connect the J19 connector on the SDI HSMC to the J1 connector on the host board. The host connector is labeled HSMC Port A and is the left connector on the host board.
 - c. For added stability, optionally screw the two boards together using standoffs and the mounting holes common to both boards.
 - d. Connect two SMA cables of equal length from J17 and J18 on the SDI HSMC to J14 and J15 on the host board. This connection supplies the SDI HSMC reference clock to the host board.



For information about the SDI HSMC, refer to the [SDI HSMC Reference Manual](#).


4. Connect the DC adapter (+16 V, 3.75 A) to the DC power jack (J4) on the FPGA board and plug the cord into a power outlet.




Use only the supplied power supply. Power regulation circuitry on the board can be damaged by power supplies with greater voltage.

5. Set the POWER switch (SW1) to the on position. When power is supplied to the board, a blue LED (D24) illuminates indicating that the board has power.

The MAX II device on the board contains a parallel flash loader (PFL) megafunction. When the board powers up, the PFL reads one of two designs from flash memory and configures the FPGA. The rotary switch (SW2) controls which design to load. When the switch is in the 0 position, the PFL loads the design from the factory portion of flash memory. When the switch is in the 1 position, the PFL loads the design from the user portion of flash memory.

 The development kit includes the MAX II configuration design in the `<install dir>\kits\stratixIVGX_4sgx230_av\examples\max2` directory.

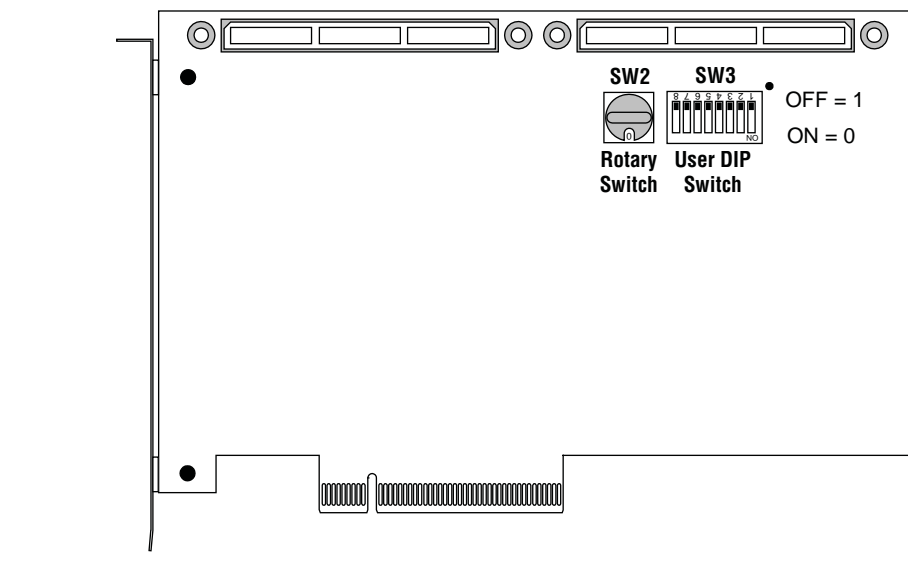
When configuration is complete, the CONF DONE LED (D5) illuminates, signaling that the Stratix IV GX device configured successfully.

 For more information about the PFL megafunction, refer to [AN 386: Using the Parallel Flash Loader with the Quartus II Software](#).

Factory Default Switch Settings

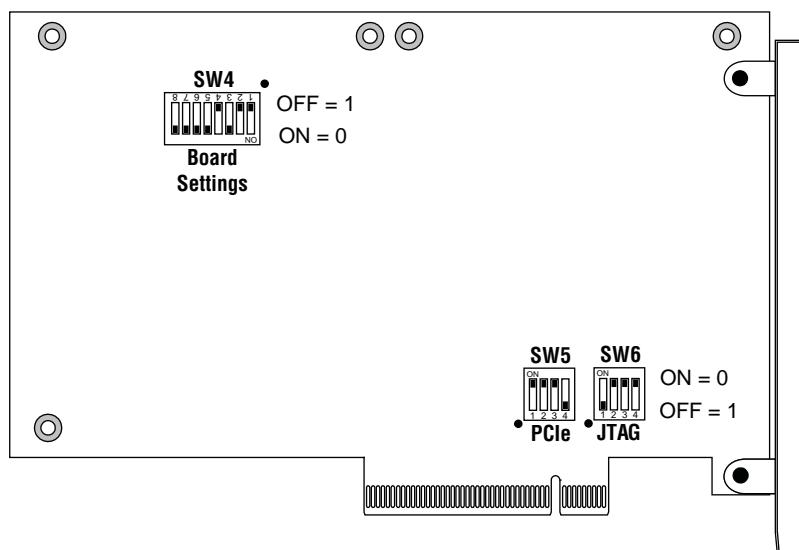
This section shows the factory switch settings for the Stratix IV GX FPGA development board. [Figure 4-1](#) shows the switch locations and the default position of each switch on the top side of the board.

Figure 4-1. Switch Locations and Default Settings on the Development Board Top



[Figure 4-2](#) shows the switch locations and the default position of each switch on the bottom side of the board.

Figure 4–2. Switch Locations and Default Settings on the Development Board Bottom



To restore the switches to their factory default settings, perform the following steps:

1. Set the rotary switch (SW2) to the 0 position, as shown in [Figure 4–1](#).
2. Set DIP switch bank (SW3) to match [Table 4–1](#) and [Figure 4–1](#).

Table 4–1. SW3 Dip Switch Settings

Switch	Position
1	Off
2	Off
3	Off
4	Off
5	Off
6	Off
7	Off
8	Off

3. Set DIP switch bank (SW4) to match [Table 4–2](#) and [Figure 4–2](#).

Table 4–2. SW4SW4 Dip Switch Settings (Part 1 of 2)

Switch	Position
1	Off
2	Off
3	On
4	Off
5	On
6	On

Table 4-2. SW4SW4 Dip Switch Settings (Part 2 of 2)

Switch	Position
7	On
8	On

- Set DIP switch bank (SW5) to match [Table 4-3](#) and [Figure 4-2](#).


Table 4-3. SW5SW5 Dip Switch Settings

Switch	Position
1	Off
2	Off
3	Off
4	Off

- Set DIP switch bank (SW6) to match [Table 4-4](#) and [Figure 4-2](#).

Table 4-4. SW6 Dip Switch Settings


Switch	Position
1	Off
2	On
3	On
4	On

 For more information about the FPGA board settings, refer to the [Stratix IV GX FPGA Development Board Reference Manual](#).

- Set the SDI HSMC jumpers to match [Table 4-5](#).

Table 4-5. SDI HSMC Jumper Settings


Board Reference	Name	Position
J4	CD_MUTE_2	On
J5	EQ_BYPASS_2	Off
J6	CD_MUTE_1	On
J7	EQ_BYPASS_1	Off

 For more information about the SDI HSMC jumper settings, refer to the [SDI HSMC Reference Manual](#).

Introduction

The Audio Video Development Kit, Stratix IV GX Edition ships with the Board Update Portal example design stored in the factory portion of the flash memory on the board. The design consists of a Nios II embedded processor, an Ethernet MAC, and an HTML web server.


When you power up the board with the rotary switch (SW2) in the 0 position, the Stratix IV GX FPGA configures with the Board Update Portal example design. The design can obtain an IP address from any DHCP server and serve a web page from the flash on your board to any host computer on the same network. The web page allows you to upload new FPGA designs to the user portion of flash memory, and provides links to useful information on the Altera website, including links to kit-specific and design resources.

 After successfully updating the flash memory user design, you can load the user design from flash memory into the FPGA. To do so, set the rotary switch (SW2) to the 1 position and power cycle the board.

The source code for the Board Update Portal design resides in the `<install dir>\kits\stratixIVGX_4sgx230_av\examples` directory. If the Board Update Portal is corrupted or deleted from the flash memory, refer to [“Restoring the Flash Device to the Factory Settings” on page A-4](#) to restore the board with its original factory contents.

Connecting to the Board Update Portal Web Page

This section provides instructions to connect to the Board Update Portal web page.

 Before you proceed, ensure that you have the following:

- A PC with a connection to a working Ethernet port on a DHCP enabled network.
- A separate working Ethernet port connected to the same network for the board.
- The Ethernet and power cables that are included in the kit.

To connect to the Board Update Portal web page, perform the following steps:

1. With the board powered down, set the rotary switch (SW2) to the 0 position.
2. Attach the Ethernet cable from the board to your LAN.
3. Power up the board. The board connects to the LAN's gateway router, and obtains an IP address. The LCD on the board displays the IP address.
4. Launch a web browser on a PC that is connected to the same network, and enter the IP address from the LCD into the browser address bar. The Board Update Portal web page appears in the browser.

5. Click Audio Video Development Kit, Stratix IV GX Edition on the Board Update Portal web page and verify that you have the latest version of the development kit software (the software version also appears on the CD-ROM).



If you download new software, double-click the downloaded **.exe** file to begin the installation process.

6. Visit the Board Update Portal web page occasionally for documentation updates and additional new designs not included on the CD-ROM.



If the Board Update Portal does not connect, refer to the [Audio Video Development Kit, Stratix IV GX Edition](#) page of the Altera website to determine if you have the latest kit software.

Using the Board Update Portal to Update User Designs

The Board Update Portal allows you to write new designs to the user portion of flash memory. Designs must be in the Nios II Flash Programmer File (**.flash**) format.



Design files available from the [Audio Video Development Kit, Stratix IV GX Edition](#) page of the Altera website include **.flash** files. You can also create **.flash** files from your own custom design. Refer to [“Preparing Design Files for Flash Programming” on page A-2](#) for information about preparing your own design for upload.

To upload a design over the network into the user portion of flash memory on your board, perform the following steps:

1. Perform the steps in [“Connecting to the Board Update Portal Web Page”](#) to access the Board Update Portal web page.
2. In the **Hardware File Name** field specify the **.flash** file that you either downloaded from the Altera website or created on your own. If there is a software component to the design, specify it in the same manner using the **Software File Name** field, otherwise leave the **Software File Name** field blank.
3. Click **Upload**. The progress bar indicates the percent complete.
4. To configure the FPGA with the new design after the flash memory upload process is complete, set the rotary switch (SW2) to the 1 position and power cycle the board, or press the CONFIG button (S1).



As long as you don't overwrite the factory image in the flash memory device, you can continue to use the Board Update Portal to write new designs to the user portion of flash memory. If you do overwrite the factory image, you can restore it by following the instructions in [“Restoring the Flash Device to the Factory Settings” on page A-4](#).

Introduction

The kit includes an example design and application called the Board Test System to test the functionality of the Stratix IV GX FPGA development board and SDI HSMC daughtercard. The application provides an easy-to-use interface to alter functional settings and observe the results. You can use the application to test board components, modify functional parameters, observe performance, and measure power usage. The application is also useful as a reference for designing systems. To install the application, follow the steps in [“Installing the Audio Video Development Kit, Stratix IV GX Edition”](#) on page 3–2.

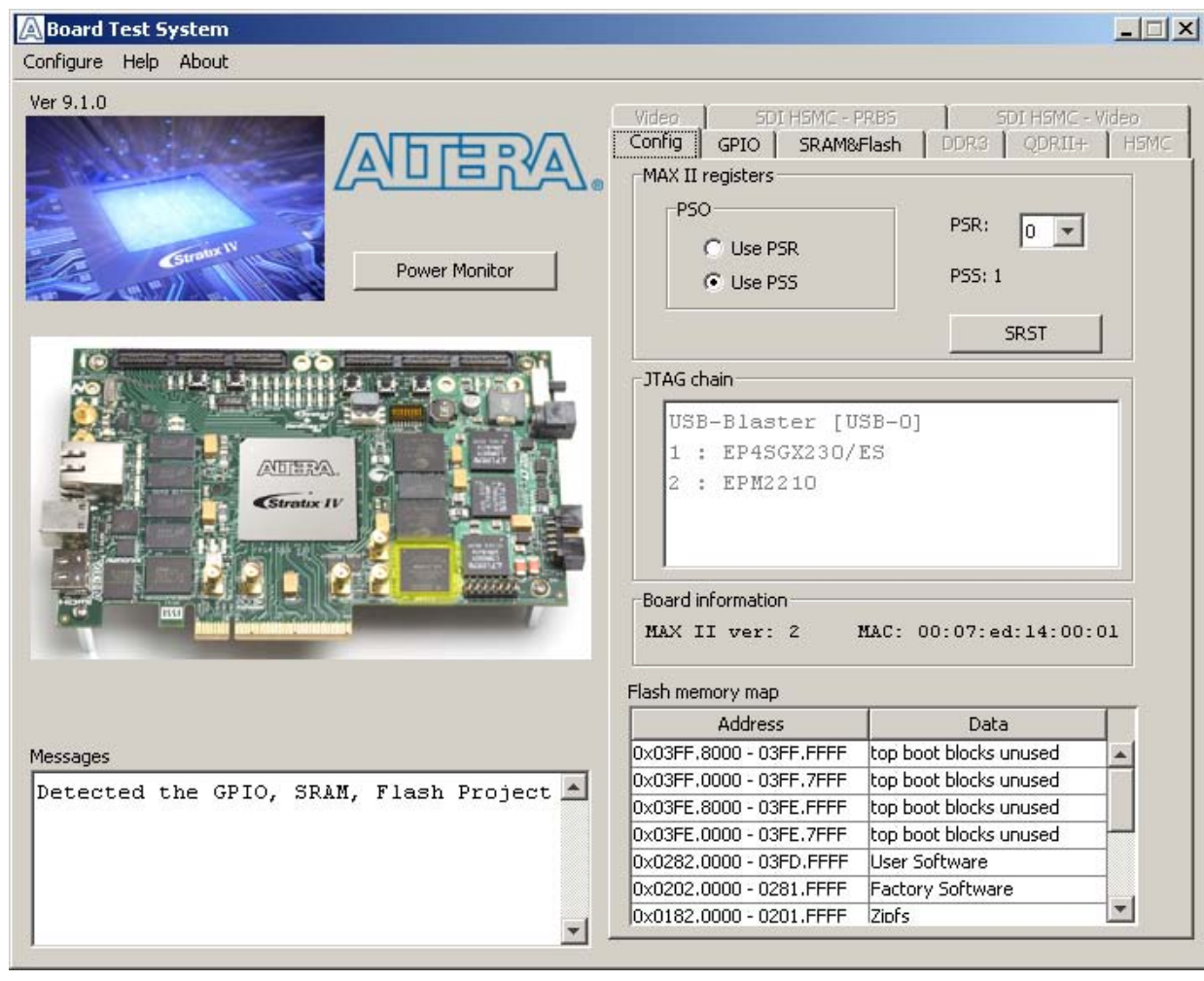
The application provides access to the following Stratix IV GX FPGA development board features:

- General purpose I/O (GPIO)
- SRAM
- Flash memory
- DDR3 and QDR II+ memories
- HSMC connectors
- High-definition multimedia interface (HDMI) and SDI video

The application allows you to exercise most of the board components. While using the application, you reconfigure the FPGA several times with test designs specific to the functionality you are testing.

A GUI runs on the PC which communicates over the JTAG bus to a test design running in the Stratix IV GX device. [Figure 6–1](#) shows the initial GUI for a board that is in the factory configuration.

Figure 6-1. Board Test System Graphical User Interface



Several designs are provided to test the major board features. Each design provides data for one or more tabs in the application. The Configure menu identifies the appropriate design to download to the FPGA for each tab.

After successful FPGA configuration, the appropriate tab appears and allows you to exercise the related board features. Highlights appear in the board picture around the corresponding components.

The **Power Monitor** button starts the Power Monitor application that measures and reports current power and temperature information for the board. Because the application communicates over the JTAG bus to the MAX II device, you can measure the power of any design in the FPGA, including your own designs.



The Board Test System and Power Monitor share the JTAG bus with other applications like the Nios II debugger and the SignalTap® II Embedded Logic Analyzer. Because the Quartus II programmer uses most of the bandwidth of the JTAG bus, other applications using the JTAG bus might time out. Be sure to close the other applications before attempting to reconfigure the FPGA using the Quartus II Programmer.

Preparing the Board

With the power to the board off, perform the following steps:

1. Connect the USB cable to the board.
2. Verify the settings for the board settings DIP switch bank (SW4) match [Table 4-2 on page 4-3](#).
3. Set the rotary switch (SW2) to the 1 position.
4. Verify the settings for the JTAG DIP switch bank (SW6), located on the back of the board, match [Table 4-4 on page 4-4](#). These settings determine the devices to include in the JTAG chain.



For more information about the board's DIP switch and jumper settings, refer to the [Stratix IV GX FPGA Development Board Reference Manual](#).

5. Turn the power to the board on. The board loads the design stored in the user portion of flash memory into the FPGA. If your board is still in the factory configuration or if you have downloaded a newer version of the Board Test System to flash memory through the Board Update Portal, the design that tests the GPIO, SRAM, and flash memory loads.



To ensure operating stability, keep the USB cable connected and the board powered on when running the demonstration application. The application cannot run correctly unless the USB cable is attached and the board is on.

Running the Board Test System

To run the application, navigate to the `<install dir>\kits\stratixIVGX_4sgx230_av\examples\board_test_system` directory and run the `BoardTestSystem.exe` application.



On Windows, click **Start > All Programs > Altera > Audio Video Development Kit, Stratix IV GX Edition <version> > Board Test System** to run the application.

A GUI appears, displaying the application tab that corresponds to the design running in the FPGA. The Stratix IV GX FPGA development board's flash memory ships preconfigured with the design that corresponds to the **Config**, **GPIO**, and **SRAM&Flash** tabs.



If you power up your board with the rotary switch (SW2) in a position other than the 1 position, or if you load your own design into the FPGA with the Quartus II Programmer, you receive a message prompting you to configure your board with a valid Board Test System design. Refer to ["The Configure Menu"](#) for information about configuring your board.

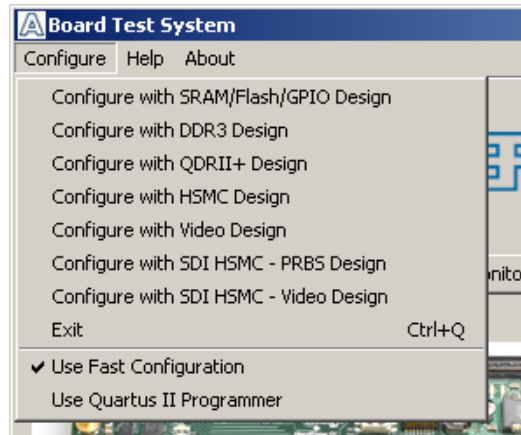
Using the Board Test System

This section describes each control in the Board Test System application.

The Configure Menu

Each test design tests different functionality and corresponds to one or more application tabs. Use the Configure menu to select the design you want to use. [Figure 6-2](#) shows the Configure menu.

Figure 6-2. The Configure Menu



To configure the FPGA with a test system design, perform the following steps:

1. On the Configure menu, click the configure command that corresponds to the functionality you wish to test.
2. In the dialog box that appears, click **Download Start** to download the corresponding design's SRAM Object File (.sof) to the FPGA. The download process usually takes about a minute.
3. When configuration finishes, close the Quartus II Programmer. The design begins running in the FPGA. The corresponding GUI application tab that interfaces with the design in the FPGA comes to the front.

The Config Tab

The **Config** tab shows information about the board's current configuration. [Figure 6-1 on page 6-2](#) shows the **Config** tab. The tab displays the contents of the MAX II registers, the MAX II code version, the JTAG chain, the board's MAC address, and the flash memory map.

The following sections describe the controls on the **Config** tab.


MAX II Registers

The **MAX II registers** control allow you to view and change the current MAX II register values as described in [Table 6-1](#). Changes to the register values with the GUI take effect immediately. For example, writing a 0 to SRST resets the board.

Table 6-1. MAX II Registers


Register Name	Read/Write Capability	Description
System Reset (SRST)	Write only	Set to 0 to initiate an FPGA reconfiguration.
Page Select Register (PSR)	Read / Write	Determines which of the up to eight (0-7) pages of flash memory to use for FPGA reconfiguration. The flash memory ships with pages 0 and 1 preconfigured.
Page Select Override (PSO)	Read / Write	When set to 0, the value in PSR determines the page of flash memory to use for FPGA reconfiguration. When set to 1, the value in PSS determines the page of flash memory to use for FPGA reconfiguration.
Page Select Switch (PSS)	Read only	Holds the current value of the rotary switch (SW2).

- **PSO**—Sets the MAX II PSO register. The following options are available:
 - **Use PSR**—Allows the PSR to determine the page of flash memory to use for FPGA reconfiguration.
 - **Use PSS**—Allows the PSS to determine the page of flash memory to use for FPGA reconfiguration.
- **PSR**—Sets the MAX II PSR register. The numerical values in the list corresponds to the page of flash memory to load during FPGA reconfiguration. Refer to [Table 6-1](#) for more information.
- **PSS**—Displays the MAX II PSS register value. Refer to [Table 6-1](#) for the list of available options.
- **SRST**—Resets the system and reloads the FPGA with a design from flash memory based on the other MAX II register values. Refer to [Table 6-1](#) for more information.

 Because the **Config** tab requires that a specific design is running in the FPGA, writing a 0 to SRST or changing the PSO value can cause the Board Test System to stop running.

JTAG Chain

The **JTAG chain** control shows all the devices currently in the JTAG chain. The Stratix IV GX device is always the first device in the chain.

 Setting DIP switch SW6.1 to the off position includes the MAX II device in the JTAG chain.

Board Information

The **Board information** controls display static information about your board.

- **MAX II ver**—Indicates the version of MAX II code currently running on the board. The MAX II code resides in the `<install dir>\kits\stratixIVGX_4sgx230_av\examples` directory. Newer revisions of this code might be available on the [Audio Video Development Kit, Stratix IV GX Edition](#) page of the Altera website.

- **MAC**—Indicates the MAC address of the board.

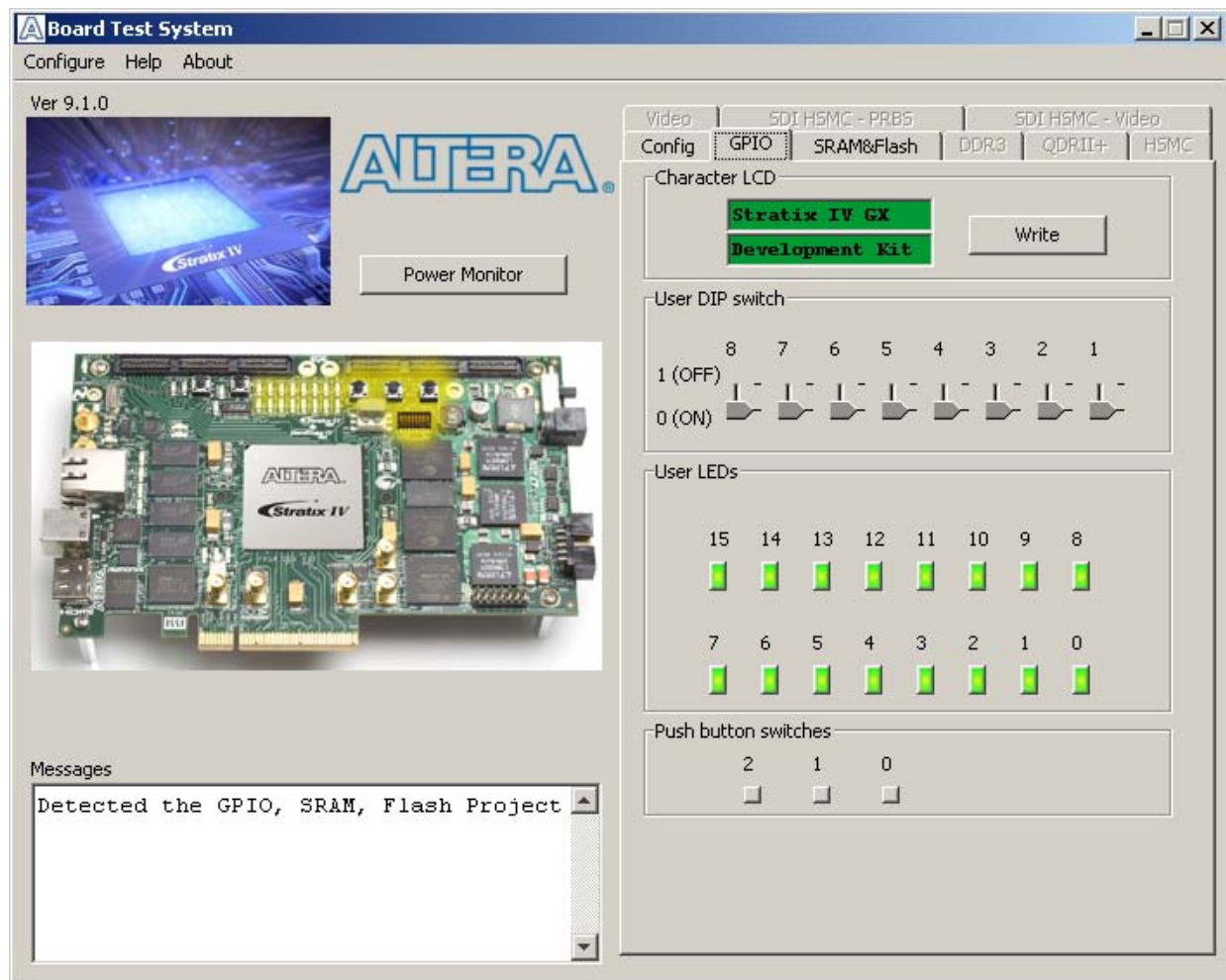
Flash Memory Map

The **Flash memory map** control shows the memory map of the flash memory device on your board.

The GPIO Tab

The **GPIO** tab allows you to interact with all the general purpose user I/O components on your board. You can write to the LCD, read DIP switch settings, turn LEDs on or off, and detect push button presses. [Figure 6–3](#) shows the **GPIO** tab.


Figure 6–3. The GPIO Tab



The following sections describe the controls on the **GPIO** tab.

LCD

The **LCD** controls allow you to display text strings on the LCD on your board. Type text in the text boxes and then click **Write**.

 If you exceed the 16 character display limit on either line, a warning message appears.

User DIP Switch

The read-only **User DIP switch** control displays the current positions of the switches in the user DIP switch bank (SW3). Change the switches on the board to see the graphical display change accordingly.

User LEDs

The **User LEDs** control displays the current state of the user LEDs. Click on the graphical representation of the LEDs to turn the board LEDs on and off.

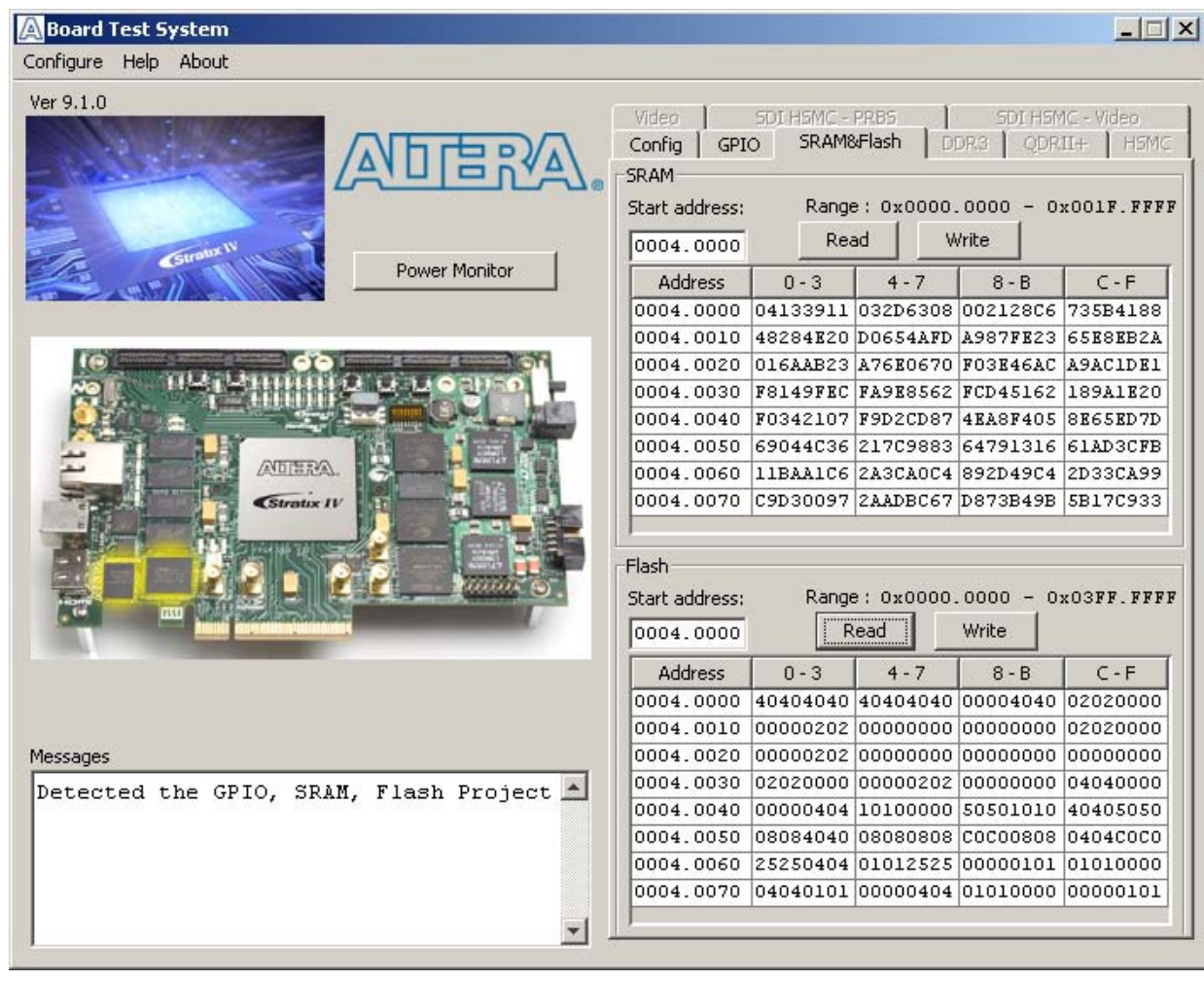
Push Button Switches

The read-only **Push button switches** control displays the current state of the board user push buttons. Press a push button on the board to see the graphical display change accordingly.

The SRAM&Flash Tab

The **SRAM&Flash** tab allows you to read and write SRAM and flash memory on your board. [Figure 6-4](#) shows the **SRAM&Flash** tab.

Figure 6-4. The SRAM&Flash Tab



The following sections describe the controls on the **SRAM&Flash** tab.

SRAM

The **SRAM** control allows you to read and write the SRAM on your board. Type a starting address in the text box and click **Read**. Values starting at the specified address appear in the table. The SRAM addresses display in the format the Nios II processor within the FPGA uses, that is, each SRAM address is offset by 0x00400000. Thus, the first location in SRAM appears as 0x00400000 in the GUI.



If you enter an address outside of the 0x00400000 to 0x005FFFFFFF SRAM address space, a warning message identifies the valid SRAM address range.

To update the SRAM contents, change values in the table and click **Write**. The application writes the new values to SRAM and then reads the values back to guarantee that the graphical display accurately reflects the memory contents.

Flash

The **Flash** control allows you to read and write the flash memory on your board. Type a starting address in the text box and click **Read**. Values starting at the specified address appear in the table. The flash memory addresses display in the format the Nios II processor within the FPGA uses, that is, each flash memory address is offset by 0x04000000. Thus, the first location in flash memory appears as 0x04000000 in the GUI.



If you enter an address outside of the 0x04000000 to 0x07FFFFFF flash memory address space, a warning message identifies the valid flash memory address range.

To update the flash memory contents, change values in the table and click **Write**. The application writes the new values to flash memory and then reads the values back to guarantee that the graphical display accurately reflects the memory contents.

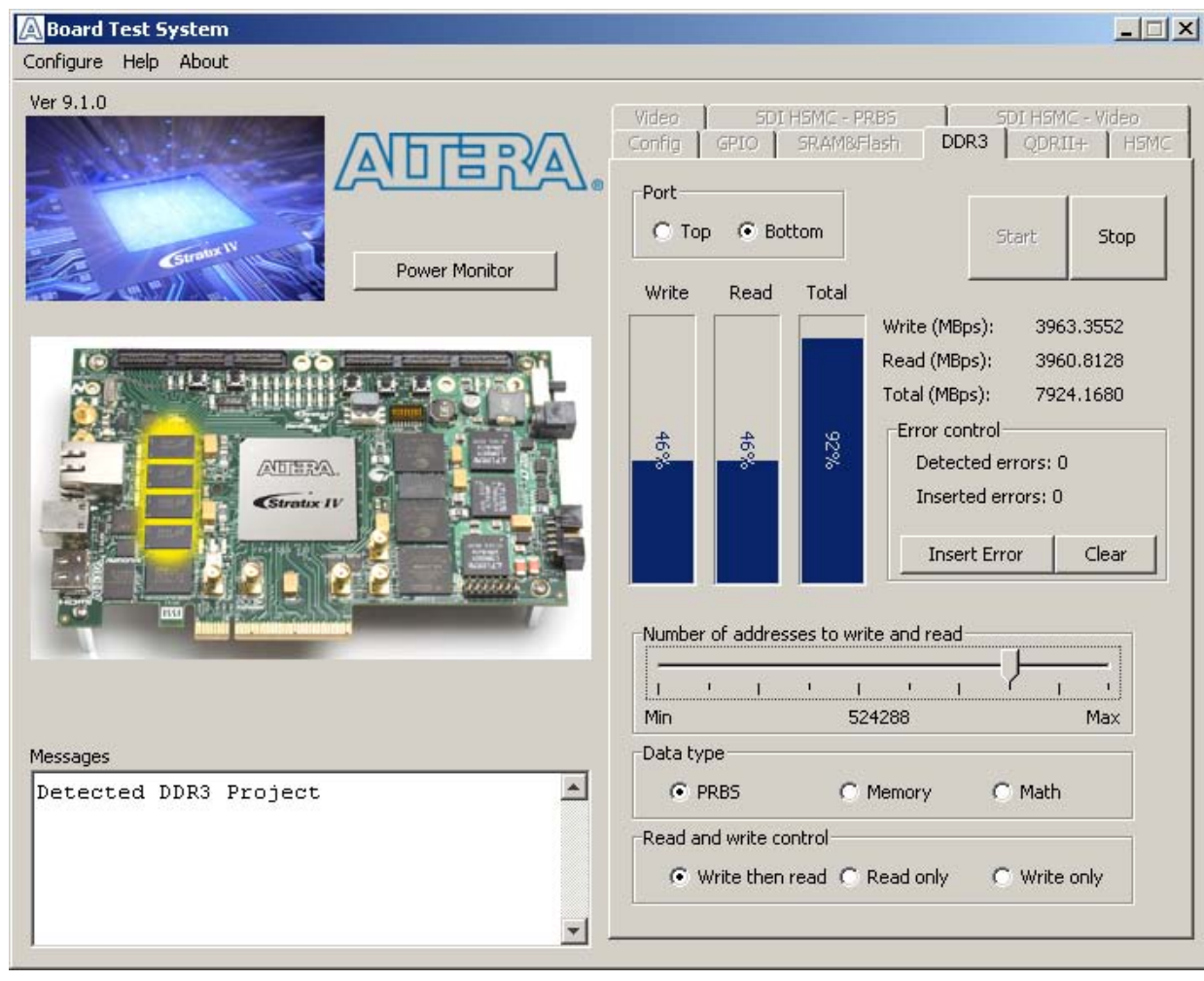


To prevent overwriting the dedicated portions of flash memory, the application limits the writable flash memory address range to 0x07FE0000 to 0x07FFFFFF (which corresponds to the unused flash memory address range of 0x03FE0000 - 0x03FFFFFF shown in [Figure 6-1 on page 6-2](#) and [Table A-1 on page A-1](#)).

The DDR3 Tab

The **DDR3** tab allows you to read and write the DDR3 memory on your board. [Figure 6-5](#) shows the **DDR3** tab.

Figure 6-5. The DDR3 Tab



The following sections describe the controls on the **DDR3** tab.

Port

The **Port** control directs communication to one of two DDR3 memory ports on your board. A 16-bit interface connects to the top bank of the Stratix IV GX FPGA and a 64-bit interface connects to the bottom banks of the FPGA.

Start

The **Start** control initiates DDR3 memory transaction performance analysis.

Stop

The **Stop** control terminates transaction performance analysis.

Performance Indicators

These controls display current transaction performance analysis information collected since you last pressed **Start**:

- **Write, Read, and Total** performance bars—Show the percentage of maximum data rate that the requested transactions are able to achieve.
- **Write (MBps), Read (MBps), and Total (MBps)**—Show the number of bytes of data analyzed per second.

Error Control

The **Error control** controls track transaction errors detected during analysis:

- **Detected errors**—Displays the number of transaction errors detected in the hardware.
- **Inserted errors**—Displays the number of errors inserted into the transaction stream.
- **Insert Error**—Inserts a one-word error into the transaction stream each time you click the button. **Insert Error** is only enabled during transaction performance analysis.
- **Clear**—Resets the **Detected Errors** and **Inserted Errors** counters to zeros.

Number of Addresses to Write and Read

The **Number of addresses to write and read** control determines the number of addresses to use in each iteration of reads and writes. Valid values range from 2 to 524,288.

Data Type

The **Data type** control specifies the type of data contained in the transactions. The following data types are available for analysis:

- **PRBS**—Selects pseudo-random bit sequences.
- **Memory**—Selects a generic data pattern stored in the on chip memory of the Stratix IV GX device.
- **Math**—Selects data generated from a simple math function within the FPGA fabric.

Read and Write Control

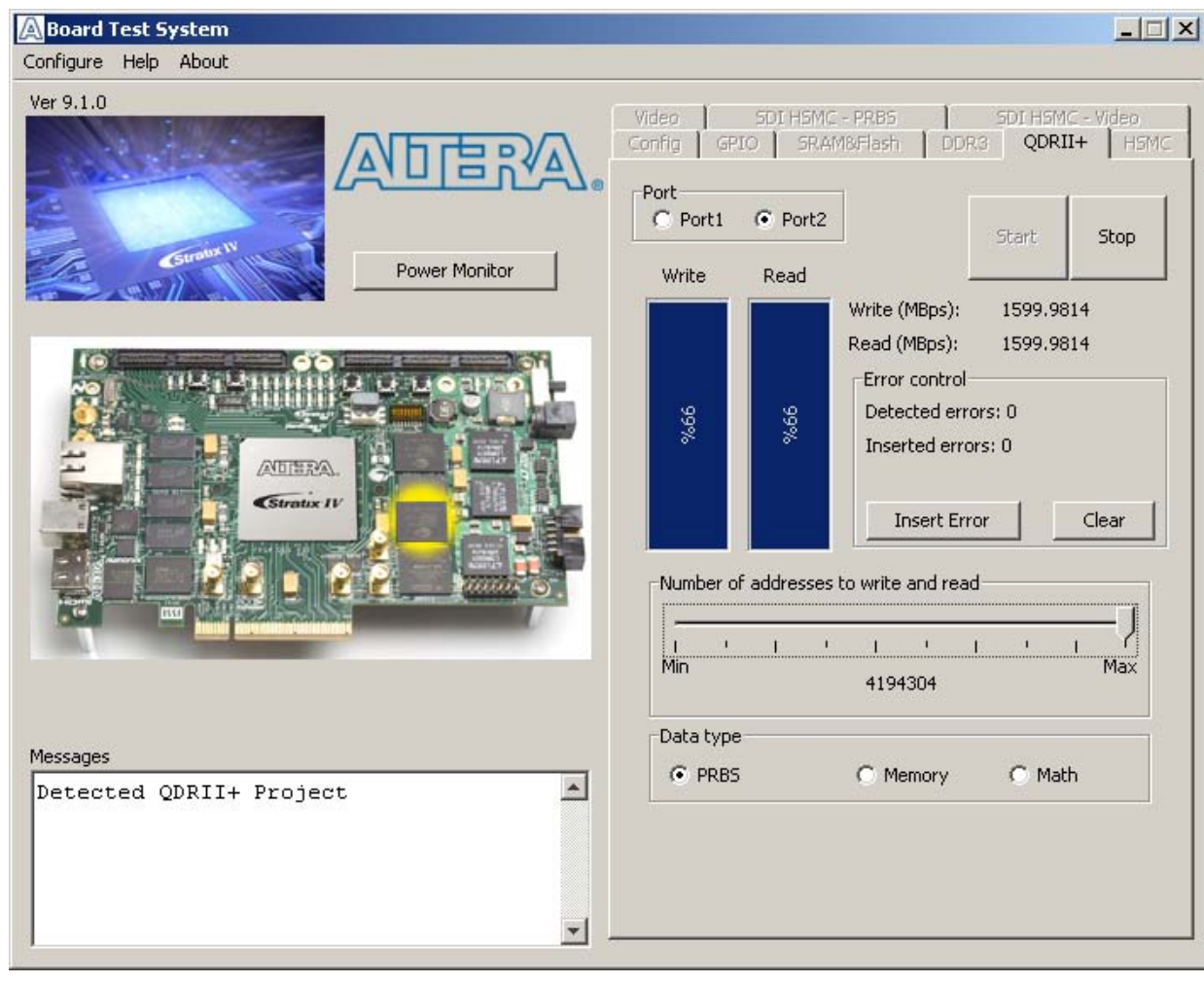
The **Read and write control** control specifies the type of transactions to analyze. The following transaction types are available for analysis:

- **Write then read**—Selects read and write transactions for analysis.
- **Read only**—Selects read transactions for analysis.
- **Write only**—Selects write transactions for analysis.

The QDR II+ Tab

The **QDR II+** tab allows you to read and write the QDR II+ memory on your board and independently test each QDR II+ port. [Figure 6-6](#) shows the **QDR II+** tab.

Figure 6-6. The QDRII+ Tab



The following sections describe the controls on the **QDRII+** tab.

Port

The **Port** control directs communication to one of two QDR II+ ports on your board.

Start

The **Start** control initiates QDR II+ memory transaction performance analysis.

Stop

The **Stop** control terminates transaction performance analysis.

Performance Indicators

These controls display current transaction performance analysis information collected since you last clicked **Start**:

- **Write and Read** performance bars—Show the percentage of maximum data rate that the requested transactions are able to achieve.

- **Write (MBps) and Read (MBps)**—Show the number of bytes of data analyzed per second.

Error Control

The **Error control** controls track transaction errors detected during analysis:

- **Detected errors**—Displays the number of transaction errors detected in the hardware.
- **Inserted errors**—Displays the number of errors inserted into the transaction stream.
- **Insert Error**—Inserts a one-word error into the transaction stream each time you click the button. **Insert Error** is only enabled during transaction performance analysis.
- **Clear**—Resets the **Detected Errors** and **Inserted Errors** counters to zeros.

Number of Addresses to Write and Read

The **Number of addresses to write and read** control determines the number of addresses to use in each iteration of reads and writes. Valid values range from 2 to 524,288.

Data Type

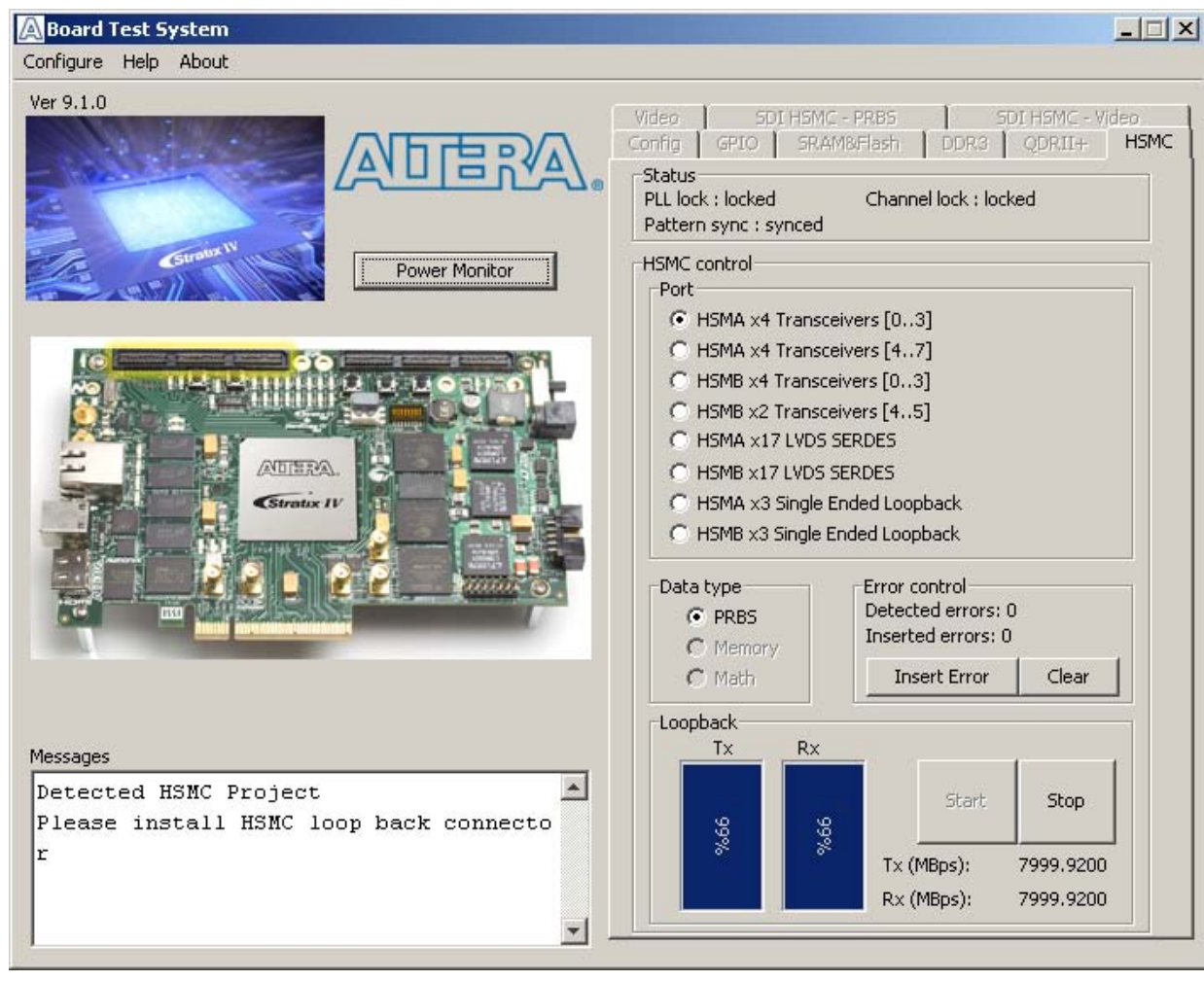
The **Data type** control specifies the type of data contained in the transactions. The following data types are available for analysis:


- **PRBS**—Selects pseudo-random bit sequences.
- **Memory**—Selects a generic data pattern stored in the on chip memory of the Stratix IV GX device.
- **Math**—Selects data generated from a simple math function within the FPGA fabric.

The HSMC Tab

The **HSMC** tab allows you to perform loopback tests on the HSMC A and HSMC B ports. [Figure 6-7](#) shows the **HSMC** tab.

Figure 6-7. The HSMC Tab



 You must have the loopback HSMC installed on the HSMC connector that you are testing for this test to succeed.

The following sections describe the controls on the **HSMC** tab.

Status

The **Status** control displays the following status information during the loopback test:

- **PLL lock**—Shows the PLL locked or unlocked state.
- **Channel lock**—Shows the channel locked or unlocked state. When locked, all lanes are aligned and bonded.
- **Pattern sync**—Shows the pattern synced or not synced state. The pattern is considered synced when the start of the data sequence is detected.

Port

The **Port** control allows you to specify the type of test to run on the HSMC ports. The following HSMC port tests are available:

- HSMA x4 Tranceivers [0..3]
- HSMA x4 Tranceivers [4..7]
- HSMB x4 Tranceivers [0..3]
- HSMB x2 Tranceivers [4..5]
- HSMA x17 LVDS SERDES
- HSMB x17 LVDS SERDES
- HSMA x3 Single Ended Loopback
- HSMB x3 Single Ended Loopback

Data Type

The **Data type** control specifies the type of data contained in the transactions. The following data types are available for analysis:

- **PRBS**—Selects pseudo-random bit sequences.
- **Memory**—Selects a generic data pattern stored in the on chip memory of the Stratix IV GX device.
- **Math**—Selects data generated from a simple math function within the FPGA fabric.

Error Control

The **Error control** controls track transaction errors detected during analysis.

- **Detected errors**—Displays the number of transaction errors detected in the hardware.
- **Inserted errors**—Displays the number of errors inserted into the transaction stream.
- **Insert Error**—Inserts a one-word error into the transaction stream each time you click the button. **Insert Error** is only enabled during transaction performance analysis.
- **Clear**—Resets the **Detected errors** and **Inserted errors** counters to zeros.

Start

The **Start** control initiates HSMC transaction performance analysis.

Stop

The **Stop** control terminates transaction performance analysis.

Performance Indicators

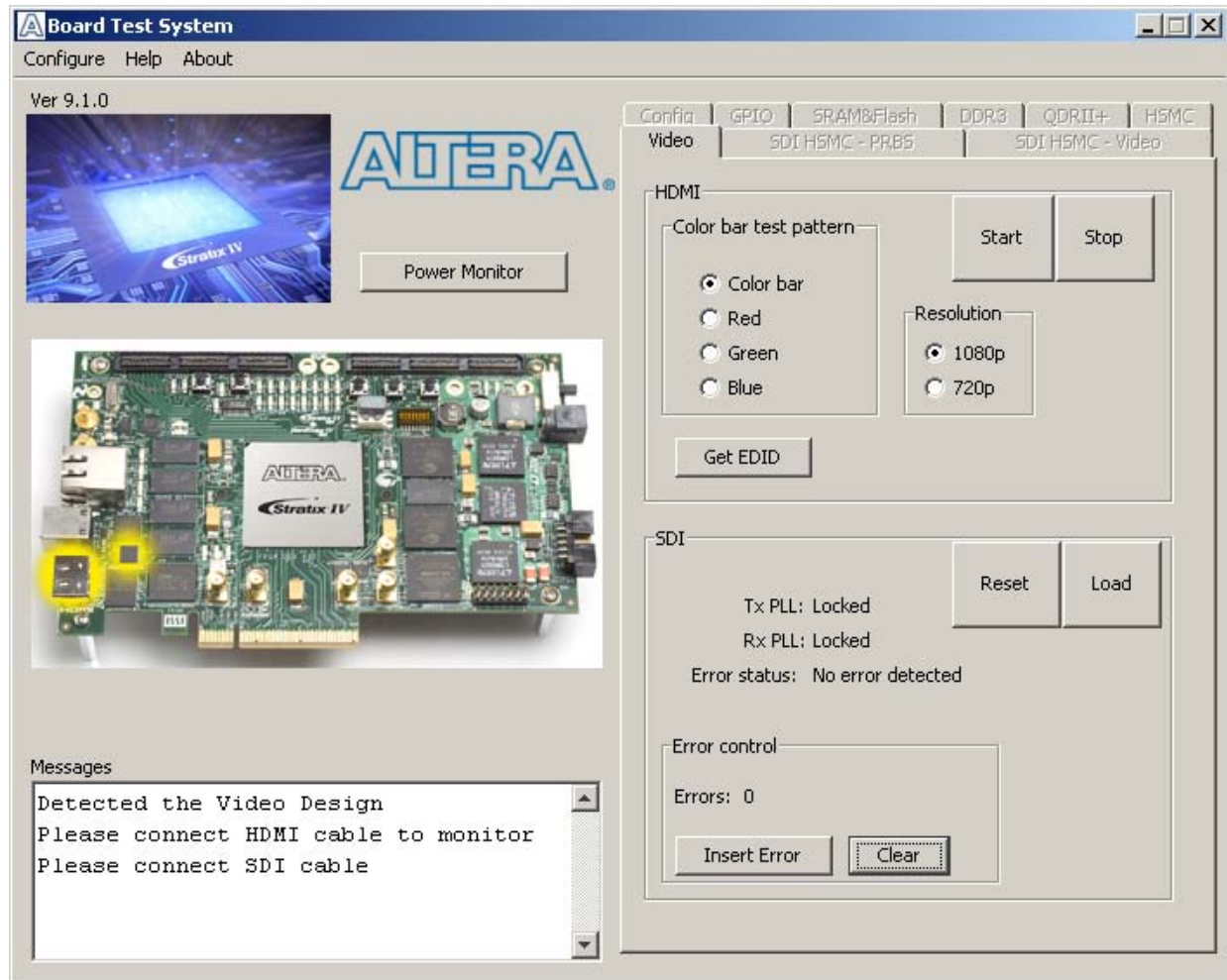
These controls display current transaction performance analysis information collected since you last clicked **Start**:

- **TX and RX performance bars**—Show the percentage of maximum data rate that the requested transactions are able to achieve.
- **Tx (MBps) and Rx (MBps)**—Show the number of bytes of data analyzed per second.

The Video Tab

The **Video** tab allows you to test the HDMI and SDI video interfaces on your board. [Figure 6-8](#) shows the **Video** tab.

Figure 6-8. The Video Tab



The following sections describe the controls on the **Video** tab.

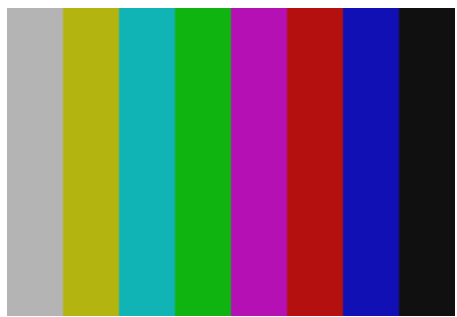
HDMI

Testing the HDMI requires connecting a monitor with at least UXGA (1600 × 1200) resolution to your board. Once connected, the following controls define the output to the monitor:

- **Color bar test pattern**—Specifies the test pattern to output to the monitor. The following choices are available:
 - **Color bar**
 - **Red**
 - **Green**
 - **Blue**

Table 6-2 shows the color bar test pattern and corresponding color names and RGB values.

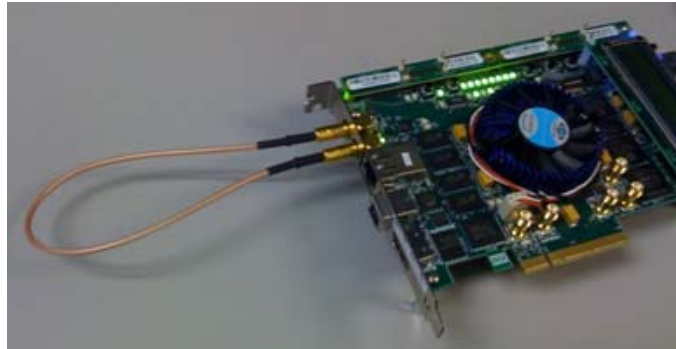
Table 6-2. HDMI Color Bar Test Pattern

Color Bars	Color	RGB Values
	White/Grey	180,180,180
	Yellow	180,180,16
	Cyan	16,180,180
	Green	16,180,16
	Magenta	180,16,180
	Red	180,16,16
	Blue	16,16,180
	Black	16,16,16

- **Resolution**—Specifies the resolution to output to the monitor. The following choices are available:
 - **1080p**—1920 × 1080 progressive
 - **720p**—1280 × 720 progressive
- **Start**—Initiates the test.
- **Stop**—Terminates the test.
- **Get EDID**—Reads the extended display information data (EDID) from the monitor and displays the results.

SDI

Testing the SDI requires connecting a SMB loopback cable as shown in Figure 6-9.

Figure 6-9. Board with SMB Loopback Cable

Once connected, the following controls are available:

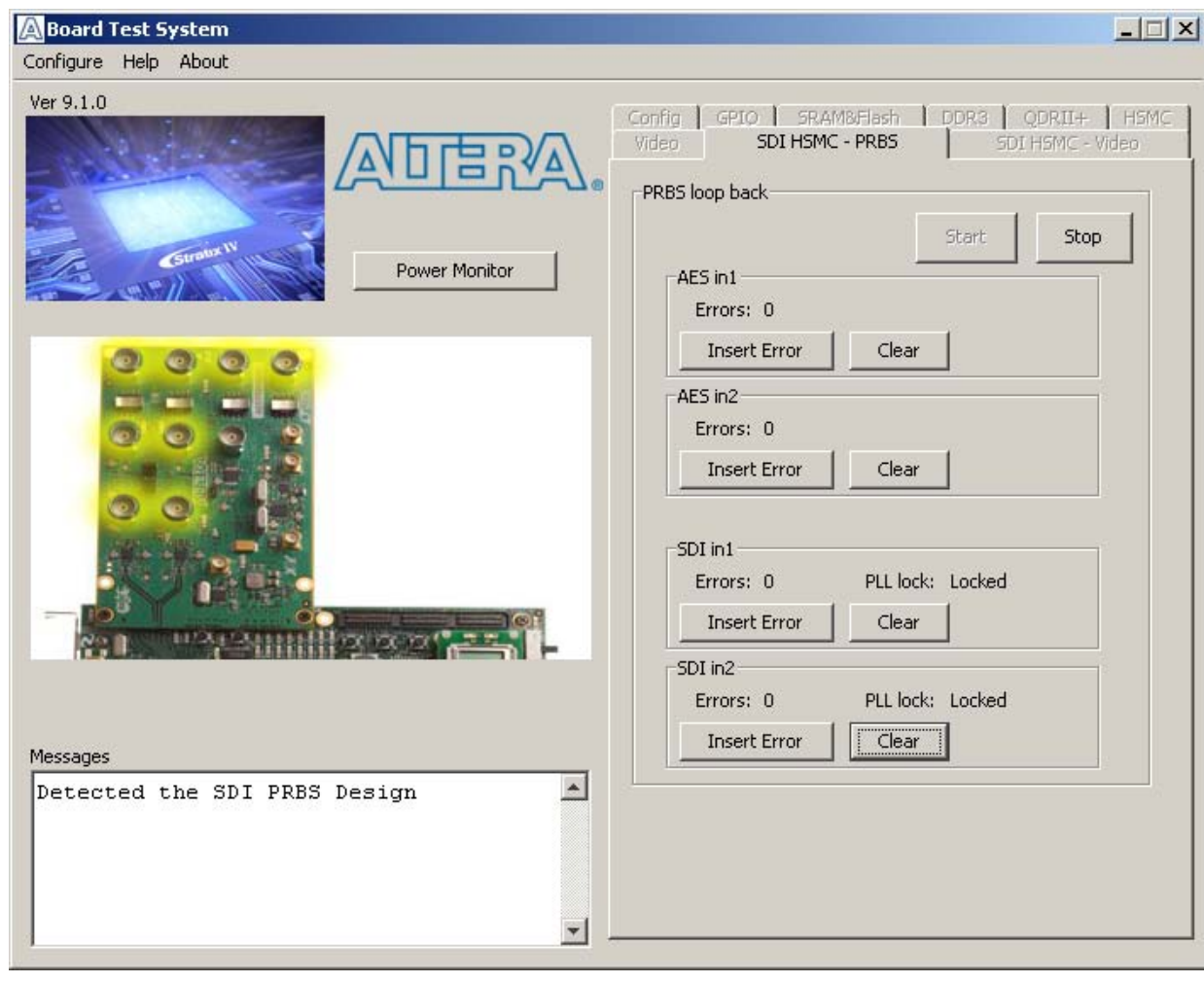
- **Reset**—Restarts the test.
- **Load**—Passes a new seed value to the PRBS generator on the device.
- **Status**—Displays the following status information during the loopback test:
 - **Tx PLL**—Shows whether the Tx PLL is locked or unlocked.
 - **Rx PLL**—Shows whether the Rx PLL is locked or unlocked.
 - **Error status**—Shows “No Error Detected” when the test is running correctly; otherwise shows pertinent error.
- **Error control**—Provides the following controls to track transaction errors detected during analysis:
 - **Errors**—Displays the number of errors detected in the hardware.
 - **Insert Error**—Inserts a one-word error into the transaction stream each time you click the button.
 - **Clear**—Resets the **Errors** counter to zero.

The SDI HSMC - PRBS Tab

The **SDI HSMC - PRBS** tab allows you test the functionality of the SDI video and AES audio transmit and receive pairs. The tests are PRBS data pattern loopback tests using the two AES digital audio ports and the two SDI digital video ports on the SDI HSMC. AES audio channel tests run at 24 Mbps and SDI tests run at 2.97 Gbps.

To monitor results of each test, connect a BNC loopback cable between the corresponding transmit and receive connectors. Tests run on all channels simultaneously, but only channels with loopback cables display accurate information. [Figure 6-10](#) shows the **SDI HSMC - PRBS** tab.

Figure 6-10. The SDI HSMC - PRBS Tab



The following sections describe the controls on the **SDI HSMC - PRBS** tab.

Start

The **Start** control initiates the loopback tests.

Stop

The **Stop** control terminates the loopback tests.

AES in1

The **AES in1** controls track transmit errors detected during analysis of AES channel 1. To track the test results, connect a BNC loopback cable between AES OUT 1 (J3) and AES IN 1 (J10).

- **Errors**—Displays the number of errors detected in the hardware.
- **Insert Error**—Inserts a bit error into the transmit data stream each time you click the button.

- **Clear**—Resets the **Errors** counter to zero.

AES in2

The **AES in2** controls track transmit errors detected during analysis of AES channel 2. To track the test results, connect a BNC loopback cable between AES OUT 2 (J14) and AES IN 2 (J15).

- **Errors**—Displays the number of errors detected in the hardware.
- **Insert Error**—Inserts a bit error into the transmit data stream each time you click the button.
- **Clear**—Resets the **Errors** counter to zero.

SDI in1

The **SDI in1** controls track transmit errors detected during analysis of SDI channel 1. To track the test results, connect a BNC loopback cable between SDI OUT 1 (J8) and SDI IN 1 (J9).

- **Errors**—Displays the number of errors detected in the hardware.
- **PLL lock**—Shows the receiver PLL locked or unlocked state.
- **Insert Error**—Inserts a bit error into the transmit data stream each time you click the button.
- **Clear**—Resets the **Errors** counter to zero.

SDI in2

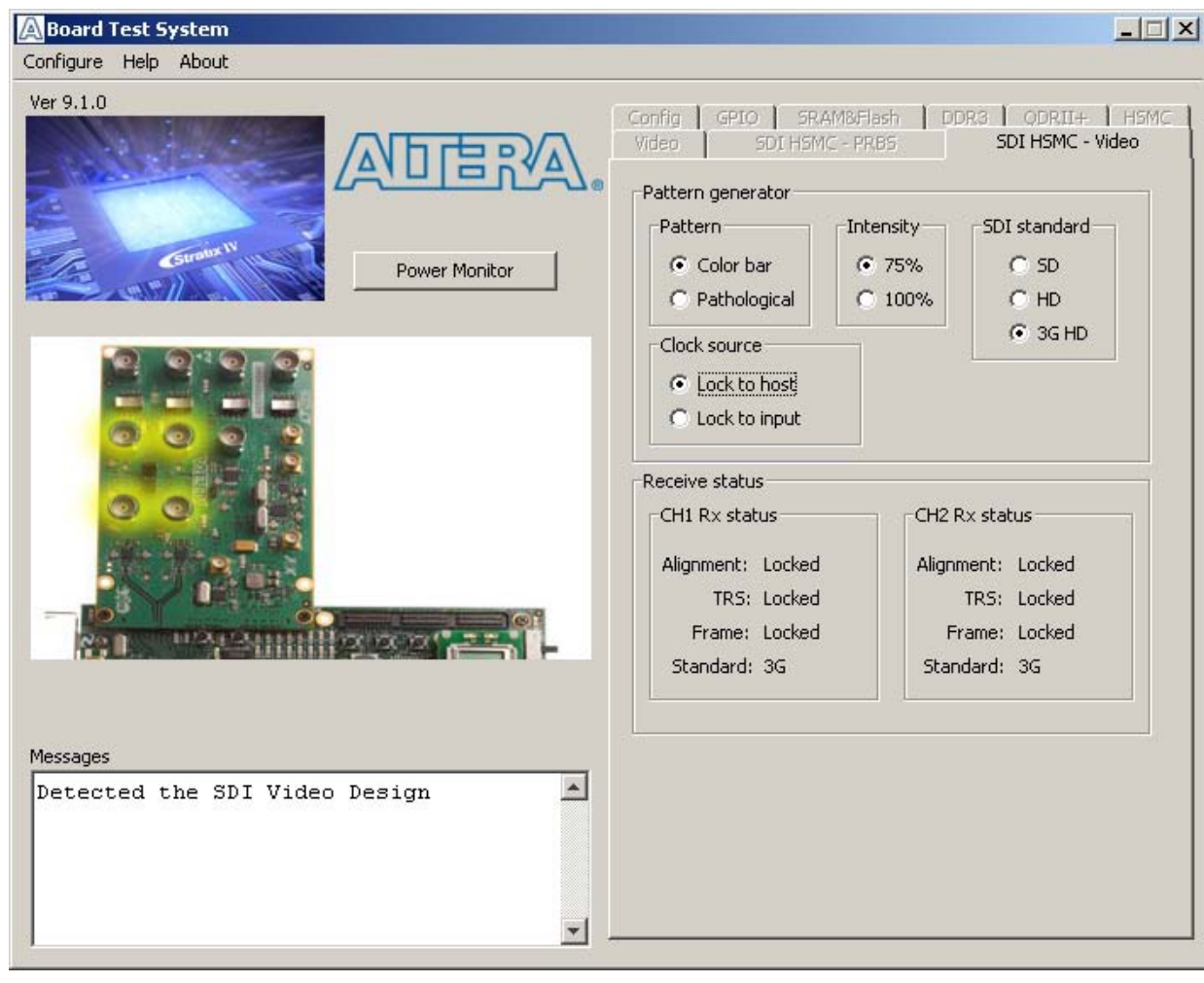
The **SDI in2** controls track transmit errors detected during analysis of SDI channel 2. To track the test results, connect a BNC loopback cable between SDI OUT 2 (J1) and SDI IN 2 (J2).

- **Errors**—Displays the number of errors detected in the hardware.
- **PLL lock**—Shows the receiver PLL locked or unlocked state.
- **Insert Error**—Inserts a bit error into the transmit data stream each time you click the button.
- **Clear**—Resets the **Errors** counter to zero.

The SDI HSMC - Video Tab

The **SDI HSMC - Video** tab allows you to generate video patterns, and send and receive SDI video through the SDI HSMC. [Figure 6-11](#) shows the **SDI HSMC - Video** tab.

Figure 6-11. The SDI HSMC - Video Tab



The following sections describe the controls on the **SDI HSMC - Video** tab.

Pattern Generator

The SDI HSMC has two transmitter channels (CH1 Tx and CH2 Tx) and two receiver channels (CH1 Rx and CH2 Rx). When a receiver channel has valid video input, the corresponding transmitter channel transmits the input video stream. When no valid video input is present, the each transmitter outputs a video pattern based on the following settings:

- **Pattern**—Specifies the test pattern to output to the monitor. The following choices are available:
 - **Color bar**—Specifies a video color bar pattern with eight vertical color bars. (Refer to [Table 6-2](#))
 - **Pathological**—Specifies a video color bar pattern with two horizontal color bars that stresses the receive PLL.

- **Clock source**—Specifies the clock the SDI HSMC PLL locks to. The following choices are available:
 - **Lock to host**—Locks the SDI HSMC PLL to the local reference on the Stratix IV GX FPGA development board.
 - **Lock to input**—Locks the SDI HSMC PLL to the SDI input stream.
- **Intensity**—Specifies the color intensity of the transmitted color bar pattern.
- **SDI standard**—Specifies the video standard the pattern generator uses on the SDI video stream. The following choices are available:
 - **SD**—Specifies a 270 Mbps data rate
 - **HD**—Specifies a 1.485 Gbps data rate
 - **3G HD**—Specifies a 2.97 Gbps data rate

Receiver Status

These controls show the settings for each receiver channel on the SDI HSMC. Both receiver channels (CH1 RX and CH2 RX) operate independently but must have the same clock source or be synchronized with each other.

- **CH1 Rx status** and **CH2 Rx status**—Show the status of the following receiver channel attributes:
 - **Alignment**—Shows the alignment locked or unlocked state. "Locked" indicates that the TRS pattern has been received and data is word aligned.
 - **TRS**—Shows the TRS locked or unlocked state. "Locked" indicates the six TRS patterns have been received with the same timing.
 - **Frame**—Shows the frame locked or unlocked state. "Locked" indicates the frame sync patterns have been received.
 - **Standard**—Shows the type of video input (SD, HD, or 3G) the channel is receiving.

The Power Monitor

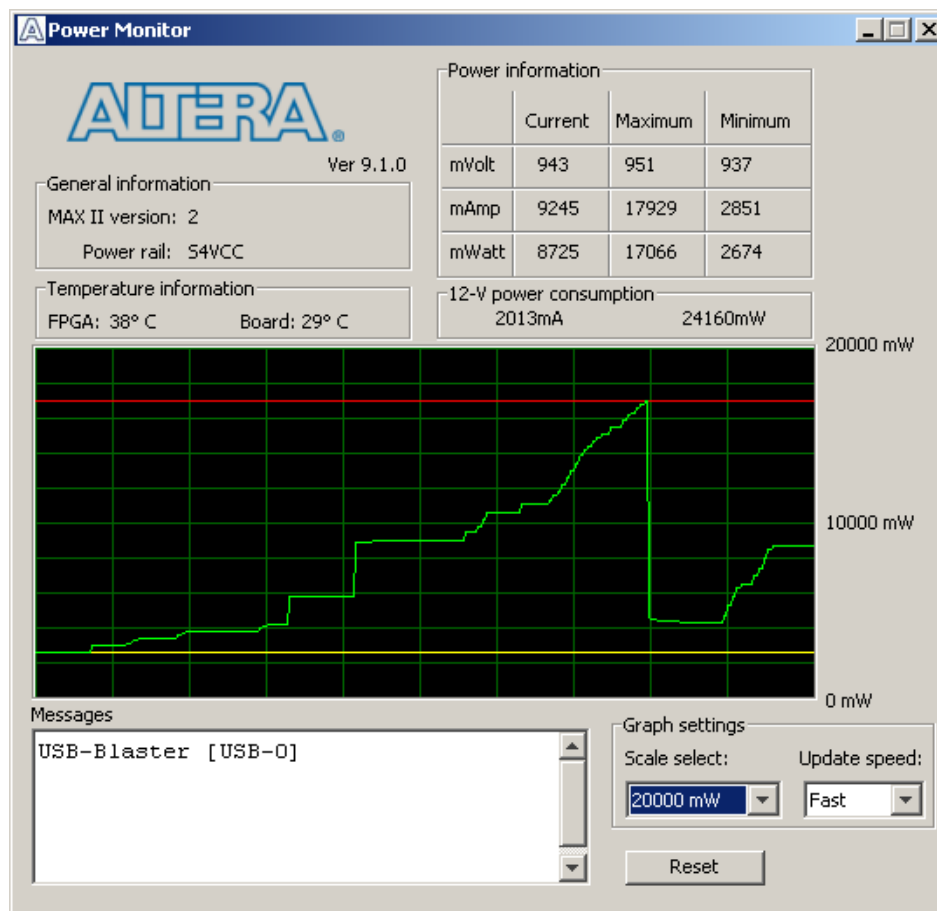
The Power Monitor measures and reports current power and temperature information for the board. To start the application, click **Power Monitor** in the Board Test System application.



You can also run the Power Monitor as a stand-alone application. **PowerMonitor.exe** resides in the `<install dir>\kits\stratixIVGX_4sgx230_av\examples\board_test_system` directory. On Windows, click **Start > All Programs > Altera > Audio Video Development Kit, Stratix IV GX Edition <version> > Power Monitor** to start the application.

The Power Monitor communicates with the MAX II device on the board through the JTAG bus. A power monitor circuit attached to the MAX II device allows you to measure the power that the Stratix IV GX FPGA device is consuming regardless of the design currently running. [Figure 6-12](#) shows the Power Monitor.

Figure 6-12. The Power Monitor




The following sections describe the Power Monitor controls.

General Information

The **General information** controls display the following information about the MAX II device:

- **MAX II version**—Indicates the version of MAX II code currently running on the board. The MAX II code resides in the `<install dir>\kits\stratixIVGX_4sgx230_av\factory_recovery` directory. Newer revisions of this code might be available on the [Audio Video Development Kit, Stratix IV GX Edition](#) page of the Altera website.
- **Power rail**—Indicates the currently-selected power rail. The rotary switch (SW2) on your board controls which rail to measure. After setting the switch for the desired rail, click **Reset** to refresh the screen with new board readings.

 A table with the power rail switch positions is available in the [Stratix IV GX FPGA Development Board Reference Manual](#).

Temperature Information

The **Temperature information** controls display the following temperature readings for the board and the FPGA on the board:

- **FPGA**—Indicates the temperature of the FPGA device.
- **Board**—Indicates the overall board temperature.

Power Information

The **Power information** control displays current, maximum, and minimum power readings for the following units:

- **mVolt**
- **mAmp**
- **mWatt**

12V Power Consumption

The **12V Power consumption** control displays 12-V power consumption readings for the following units:

- **mA**
- **mW**

Power Graph

The **Power graph** control displays the mWatt power consumption of your board over time. The green line indicates the current value. The red line indicates the maximum value read since the last reset. The yellow line indicates the minimum value read since the last reset.

Graph Settings

The following **Graph settings** controls allow you to define the look and feel of the power graph:

- **Scale select**—Specifies the amount to scale the power graph. Select a smaller number to zoom in to see finer detail. Select a larger number to zoom out to see the entire range of recorded values.
- **Update speed**—Specifies how often to refresh the graph.

Reset

This **Reset** control clears the graph, resets the minimum and maximum values, and restarts the Power Monitor.

Calculating Power

The Power Monitor calculates power by measuring two different voltages with the LT2418 A/D and applying the equation $P = V \times I$ to determine the power consumption. The LT2418 measures the voltage after the appropriate sense resistor (V_{sense}) and the voltage drop across that sense resistor (V_{dif}). The current (I) is calculated by dividing the measured voltage drop across the resistor by the value of the sense resistor ($I = V_{dif}/R$). Through substitution, the equation for calculating power becomes $P = V \times I = V_{sense} \times (V_{dif}/R) = (V_{sense}) \times (V_{dif}) \times (1/.003)$.

You can verify the power numbers shown in the Power Monitor with a digital multimeter that is capable of measuring microvolts to ensure you have enough significant digits for an accurate calculation. Measure the voltage on one side of the resistor (the side opposite the power source) and then measure the voltage on the other side. The first measurement is V_{sense} and the difference between the two measurements is V_{dif} . Plug the values into the equation to determine the power consumption.

The Clock Control

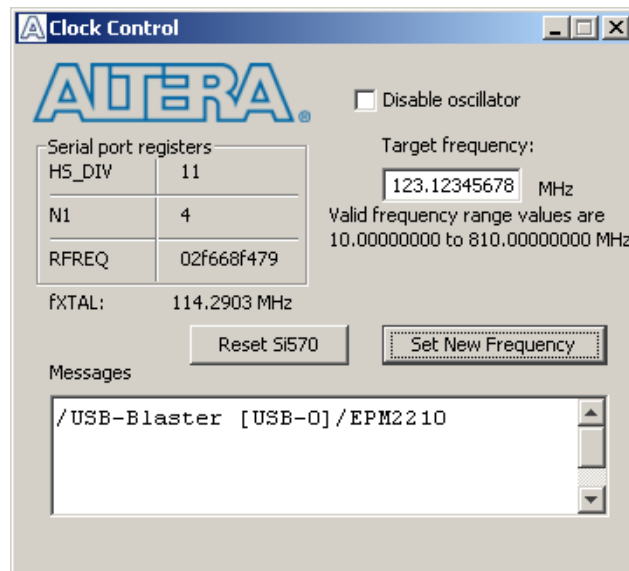
The Clock Control sets the Si570 programmable oscillator to any frequency between 10 MHz and 810 MHz with eight digits of precision to the right of the decimal point. The oscillator drives a 2-to-4 buffer that drives a copy of the clock to all four edges of the FPGA.

The Clock Control runs as a stand-alone application. **ClockControl.exe** resides in the `<install dir>\kits\stratixIVGX_4sgx230_av\examples\board_test_system` directory. On Windows, click **Start > All Programs > Altera > Audio Video Development Kit, Stratix IV GX Edition <version> > Clock Control** to start the application.



For more information about the Si570 and the Stratix IV GX development board's clocking circuitry and clock input pins, refer to the [Stratix IV GX FPGA Development Board Reference Manual](#).

The Clock Control communicates with the MAX II device on the board through the JTAG bus. The Si570 programmable oscillator is connected to the MAX II device through a 2-wire serial bus. [Figure 6-13](#) shows the Clock Control.

Figure 6-13. The Clock Control

The following sections describe the Clock Control controls.

Serial Port Registers

The **Serial port registers** control shows the current values from the Si570 registers.

- For more information about the Si570 registers, refer to the *Si570/Si571* datasheet available on the Silicon Labs website (www.silabs.com).

fXTAL

The **fXTAL** control shows the calculated internal fixed-frequency crystal based on the serial port register values.

- For more information about the f_{XTAL} value and how it is calculated, refer to the *Si570/Si571* datasheet available on the Silicon Labs website (www.silabs.com).

Disable Oscillator

The **Disable oscillator** enables and disables the Si570 output buffer. Turn on **Disable oscillator** to power down the Si570 output buffer. Turn off the **Disable oscillator** to drive the Si570 output buffer normally.

Target Frequency

The **Target frequency** control allows you to specify the frequency of the clock. Legal values are between 10 and 810 MHz with eight digits of precision to the right of the decimal point. For example, 421.31259873 is possible within 100 parts per million (ppm). The **Target frequency** control works in conjunction with the **Set New Frequency** control.

Reset Si570

The **Reset Si570** control sets the Si570 programmable oscillator to the default frequency of 100 MHz.

Set New Frequency

The **Set New Frequency** control sets the Si570 programmable oscillator frequency to the value in the **Target frequency** control. Frequency changes might take several milliseconds to take effect. You might see glitches on the clock during this time. Altera recommends resetting the FPGA logic after changing frequencies.

Configuring the FPGA Using the Quartus II Programmer

You can use the Quartus II Programmer to configure the FPGA with a specific **.sof**. Before configuring the FPGA, ensure that the Quartus II Programmer and the USB-Blaster driver are installed on the host computer, the USB cable is connected to the development board, power to the board is on, and no other applications that use the JTAG chain are running.


To configure the Stratix IV GX FPGA, perform the following steps:

1. Start the Quartus II Programmer.
2. Click **Add File** and select the path to the desired **.sof**.
3. Turn on the **Program/Configure** option for the added file.
4. Click **Start** to download the selected file to the FPGA. Configuration is complete when the progress bar reaches 100%.

Introduction

As you develop your own project using the Altera tools, you can program the flash memory device so that your own design loads from flash memory into the FPGA on power up. This appendix describes the preprogrammed contents of the common flash interface (CFI) flash memory device on the Stratix IV GX FPGA development board and the Nios II EDS tools involved with reprogramming the user portions of the flash memory device.

The Stratix IV GX FPGA development board ships with the CFI flash device preprogrammed with a default factory FPGA configuration for running the Board Update Portal example design and a default user configuration for running the Board Test System demonstration. There are several other factory software files written to the CFI flash device to support the Board Update Portal. These software files were created using the Nios II EDS, just as the hardware design was created using the Quartus II software.

 For more information about Altera development tools, refer to the [Design Software](#) page of the Altera website.

CFI Flash Memory Map

Table A-1 shows the default memory contents of the 512-Mb (64-MB) Intel PC48F4400P0VB00 CFI flash device. For the Board Update Portal to run correctly and update designs in the user memory, this memory map must not be altered.

Table A-1. Byte Address Flash Memory Map

Block Description	Size	Address Range
Unused	32 KB	0x03FF8000 - 0x03FFFFFF
Unused	32 KB	0x03FF0000 - 0x03FF7FFF
Unused	32 KB	0x03FE8000 - 0x03FEFFFF
Unused	32 KB	0x03FE0000 - 0x03FE7FFF
User software	24,320 KB	0x02820000 - 0x03FDFFFF
Factory software	8,192 KB	0x02020000 - 0x0281FFFF
zipfs (html, web content)	8,192 KB	0x01820000 - 0x0201FFFF
User hardware	12,288 KB	0x00C20000 - 0x0181FFFF
Factory hardware	12,288 KB	0x00020000 - 0x00C1FFFF
PFL option bits	32 KB	0x00018000 - 0x0001FFFF
Board information	32 KB	0x00010000 - 0x00017FFF
Ethernet option bits	32 KB	0x00008000 - 0x0000FFFF
User design reset vector	32 KB	0x00000000 - 0x00007FFF



Altera recommends that you do not overwrite the factory hardware and factory software images unless you are an expert with the Altera tools or deliberately overwriting the factory design. If you unintentionally overwrite the factory hardware or factory software image, refer to “[Restoring the Flash Device to the Factory Settings](#)” on page A-4.

Preparing Design Files for Flash Programming

You can obtain designs containing prepared **.flash** files from the [Audio Video Development Kit, Stratix IV GX Edition](#) page of the Altera website or create **.flash** files from your own custom design.

The Nios II EDS **sof2flash** command line utility converts your Quartus II-compiled **.sof** into the **.flash** format necessary for the flash device. Similarly, the Nios II EDS **elf2flash** command line utility converts your compiled and linked Executable and Linking Format File (**.elf**) software design to **.flash**. After your design files are in the **.flash** format, use the Board Update Portal or the Nios II EDS **nios2-flash-programmer** utility to write the **.flash** files to the user hardware and user software locations of the flash memory.



For more information about Nios II EDS software tools and practices, refer to the [Embedded Software Development](#) page of the Altera website.

Creating Flash Files Using the Nios II EDS

If you have an FPGA design developed using the Quartus II software, and software developed using the Nios II EDS, follow these instructions:

1. On the Windows Start menu, click **All Programs > Altera > Nios II EDS > Nios II Command Shell**.
2. In the Nios II command shell, navigate to the directory where your design files reside and type the following Nios II EDS commands:

- For Quartus II **.sof** files:

```
sof2flash --input=<yourfile>_hw.sof --output=<yourfile>_hw.flash --offset=0xC20000 ←
```

- For Nios II **.elf** files:

```
elf2flash --base=0x0A000000 --end=0x0BFFFFFF --reset=0x0A820000  
--input=<yourfile>_sw.elf --output=<yourfile>_sw.flash  
--boot=$SOPC_KIT_NIOS2/components/altera_nios2/boot_loader_cfi.srec ←
```

The resulting **.flash** files are ready for flash device programming. If your design uses additional files such as image data or files used by the runtime program, you must first convert the files to **.flash** format and concatenate them into one **.flash** file before using the Board Update Portal to upload them.



The Board Update Portal standard **.flash** format conventionally uses either **<filename>_hw.flash** for hardware design files or **<filename>_sw.flash** for software design files.

Programming Flash Memory Using the Board Update Portal

Once you have the necessary `.flash` files, you can use the Board Update Portal to reprogram the flash memory. Refer to “Using the Board Update Portal to Update User Designs” on page 5-2 for more information.



If you have generated a `.sof` that operates without a software design file, you can still use the Board Update Portal to upload your design. In this case, leave the **Software File Name** field blank.

Programming Flash Memory Using the Nios II EDS


The Nios II EDS offers a `nios2-flash-programmer` utility to program the flash memory directly. To program the `.flash` files or any compatible S-Record File (`.srec`) to the board using `nios2-flash-programmer`, perform the following steps:

1. Set the rotary switch (SW2) to the 0 position to load the Board Update Portal design from flash memory on power up.
2. Attach the USB-Blaster cable and power up the board.
3. If the board has powered up and the LCD displays either "Connecting..." or a valid IP address (such as 152.198.231.75), proceed to step 8. If no output appears on the LCD is seen or if the CONF DONE LED (D5) does not illuminate, continue to step 4 to load the FPGA with a flash-writing design.
4. Launch the Quartus II Programmer to configure the FPGA with a `.sof` capable of flash programming. Refer to “Configuring the FPGA Using the Quartus II Programmer” on page 6-27 for more information.
5. Click **Add File** and select `<install dir>\kits\stratixIVGX_4sgx230_av\factory_recovery\s4gx230_av_bup.sof`.
6. Turn on the **Program/Configure** option for the added file.
7. Click **Start** to download the selected configuration file to the FPGA. Configuration is complete when the progress bar reaches 100%. The CONF DONE LED (D5) and the eight lower user LEDs (D16-D23) illuminate indicating that the flash device is ready for programming.
8. On the Windows Start menu, click **All Programs > Altera > Nios II EDS > Nios II Command Shell**.
9. In the Nios II command shell, navigate to the `<install dir>\kits\stratixIVGX_4sgx230_av\factory_recovery` directory (or to the directory of the `.flash` files you created in “Creating Flash Files Using the Nios II EDS” on page A-2) and type the following Nios II EDS command:

```
nios2-flash-programmer --base=0x08000000 <yourfile>_hw.flash ↵
```
10. After programming completes, if you have a software file to program, type the following Nios II EDS command:

```
nios2-flash-programmer --base=0x0A000000 <yourfile>_sw.flash ↵
```
11. Set the rotary switch (SW2) to the 1 position and power cycle the board, or press the CONFIGN button (S1) to load and run the user design.

Programming the board is now complete.

 For more information about the `nios2-flash-programmer` utility, refer to the *Nios II Flash Programmer User Guide*.

Restoring the Flash Device to the Factory Settings

This section describes how to restore the original factory contents to the flash memory device on the development board. Make sure you have the Nios II EDS installed, and perform the following instructions:

1. Set the board switches to the factory default settings described in “[Factory Default Switch Settings](#)” on page 4–2.
2. Launch the Quartus II Programmer to configure the FPGA with a `.sof` capable of flash programming. Refer to “[Configuring the FPGA Using the Quartus II Programmer](#)” on page 6–27 for more information.
3. Click **Add File** and select `<install dir>\kits\stratixIVGX_4sgx230_av\factory_recovery\s4gx230_av_bup.sof`.
4. Turn on the **Program/Configure** option for the added file.
5. Click **Start** to download the selected configuration file to the FPGA. Configuration is complete when the progress bar reaches 100%. The CONF DONE LED (D5) and the eight lower user LEDs (D16-D23) illuminate indicating that the flash device is ready for programming.
6. On the Windows Start menu, click **All Programs > Altera > Nios II EDS > Nios II Command Shell**.
7. In the Nios II command shell, navigate to the `<install dir>\kits\stratixIVGX_4sgx230_av\factory_recovery` directory and type the following command to run the restore script:

```
./restore.sh ←
```

Restoring the flash memory might take several minutes. Follow any instructions that appear in the Nios II command shell.
8. After all flash programming completes, cycle the POWER switch (SW1) off then on.
9. Using the Quartus II Programmer, click **Add File** and select `<install dir>\kits\stratixIVGX_4sgx230_av\factory_recovery\s4gx230_av_bup.sof`.
10. Turn on the **Program/Configure** option for the added file.
11. Click **Start** to download the selected configuration file to the FPGA. Configuration is complete when the progress bar reaches 100%. The CONF DONE LED (D5) and the eight lower user LEDs (D16-D23) illuminate indicating the flash memory device is now restored with the factory contents.
12. Cycle the POWER switch (SW1) off then on to load and run the restored factory design.
13. The restore script cannot restore the board’s MAC address automatically. In the Nios II command shell, type the following Nios II EDS command:

```
nios2-terminal ↵
```


and follow the instructions in the terminal window to generate a unique MAC address.

 To ensure that you have the most up-to-date factory restore files and information about this product, refer to the [Altera Development Kits](#) page of the Altera website.


Restoring the MAX II CPLD to the Factory Settings

This section describes how to restore the original factory contents to the MAX II CPLD on the development board. Make sure you have the Nios II EDS installed, and perform the following instructions:

1. Set the board switches to the factory default settings described in “[Factory Default Switch Settings](#)” on page 4-2.

 Setting DIP switch SW6.1 to the off position includes the MAX II device in the JTAG chain.

2. Launch the Quartus II Programmer.
3. Click **Auto Detect**.
4. Click **Add File** and select *<install dir>\kits\stratixIVGX_4sgx230_av\factory_recovery\max2.pof*.
5. Turn on the **Program/Configure** option for the added file.
6. Click **Start** to download the selected configuration file to the MAX II CPLD. Configuration is complete when the progress bar reaches 100%.

 To ensure that you have the most up-to-date factory restore files and information about this product, refer to the [Audio Video Development Kit, Stratix IV GX Edition](#) page of the Altera website.

Revision History

The following table displays the revision history for this user guide.

Date & Document Version	Changes Made	Summary of Changes
November 2009 v2.0	<ul style="list-style-type: none"> ■ Revised BTS screen shots to reflect minor GUI revisions. <ul style="list-style-type: none"> ■ The Configure menu now offers options to determine how to pass data through the JTAG chain. ■ The Config tab MAX II controls are now more obvious. ■ Changed BUP .sof name from stratixIVGX_4sgx230es_dev_bup.sof to s4gx230_av_bup.sof. ■ Changed directory path name from stratixIVGX_4sgx230es_av to stratixIVGX_4sgx230_av. ■ Changed PowerTool.exe to PowerMonitor.exe. ■ Added description of the Clock Control stand-alone application. ■ Added instructions in Appendix A about restoring the board's MAC address. 	Engineering silicon to production silicon revisions
July 2009 v1.0	Initial release.	—

How to Contact Altera

For the most up-to-date information about Altera products, refer to the following table.






Contact <i>(Note 1)</i>	Contact Method	Address
Technical support	Website	www.altera.com/support
Technical training	Website	www.altera.com/training
	Email	custrain@altera.com
Product literature	Website	www.altera.com/literature
Non-technical support (General) (Software Licensing)	Email	nacomp@altera.com
	Email	authorization@altera.com

Note to Table:

(1) You can also contact your local Altera sales office or sales representative.

Typographic Conventions

This document uses the typographic conventions shown in the following table.

Visual Cue	Meaning
Bold Type with Initial Capital Letters	Indicates command names, dialog box titles, dialog box options, and other GUI labels. For example, Save As dialog box.
bold type	Indicates directory names, project names, disk drive names, file names, file name extensions, and software utility names. For example, qdesigns directory, d: drive, and chiptrip.gdf file.
<i>Italic Type with Initial Capital Letters</i>	Indicates document titles. For example, <i>AN 519: Stratix IV Design Guidelines</i> .
<i>Italic type</i>	Indicates variables. For example, $n + 1$. Variable names are enclosed in angle brackets (<>). For example, <file name> and <project name>.pdf file.
Initial Capital Letters	Indicates keyboard keys and menu names. For example, Delete key and the Options menu.
“Subheading Title”	Quotation marks indicate references to sections within a document and titles of Quartus II Help topics. For example, “Typographic Conventions.”
Courier type	Indicates signal, port, register, bit, block, and primitive names. For example, data1, tdi, and input. Active-low signals are denoted by suffix n. For example, resetn. Indicates command line commands and anything that must be typed exactly as it appears. For example, c:\qdesigns\tutorial\chiptrip.gdf. Also indicates sections of an actual file, such as a Report File, references to parts of files (for example, the AHDL keyword SUBDESIGN), and logic function names (for example, TRI).
1., 2., 3., and a., b., c., and so on.	Numbered steps indicate a list of items when the sequence of the items is important, such as the steps listed in a procedure.
■ ■	Bullets indicate a list of items when the sequence of the items is not important.
	The hand points to information that requires special attention.
	A caution calls attention to a condition or possible situation that can damage or destroy the product or your work.
	A warning calls attention to a condition or possible situation that can cause you injury.
	The angled arrow instructs you to press Enter.
	The feet direct you to more information about a particular topic.