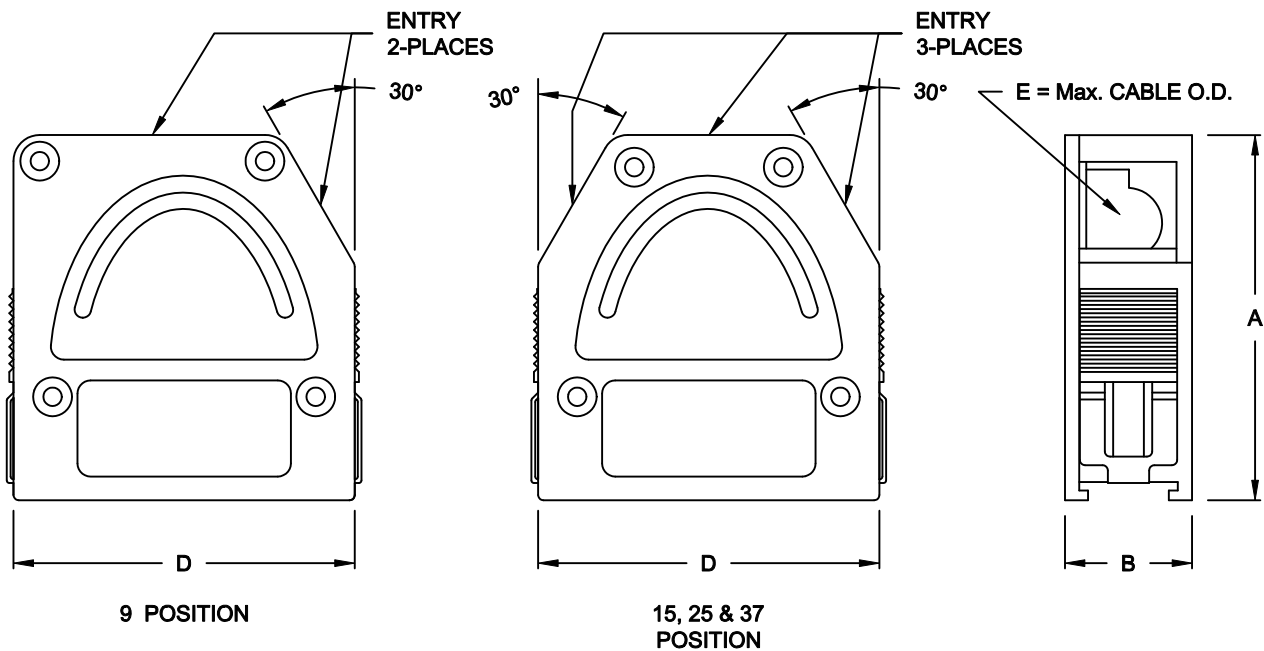


DESCRIPTION: QUICK RELEASE - DIE CAST

SPECIFICATION:
MATERIAL: ZINC ALLOY, ZAMAK Z0410



BACKSHELL KIT INCLUDES:

- (2) BACKSHELL HALVES
- (4) MOUNTING SCREWS
- (1) GROUNDING SCREW


*** CABLE CLAMP ORDERED SEPARATELY ***
*** SEE SHEET 2 ***

955-YYY-030R121

SERIES _____
POSITIONS _____
009
015
025
037
MATERIAL _____
030 = DIE CAST
RoHS COMPLIANT _____
R = HIGH TEMP. PROCESS
COLOR _____
12 = METAL(IZED)
PUT-UP _____
1 = KIT

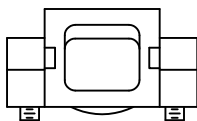
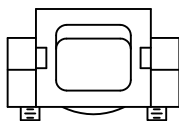
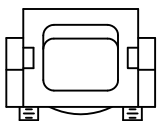
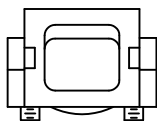
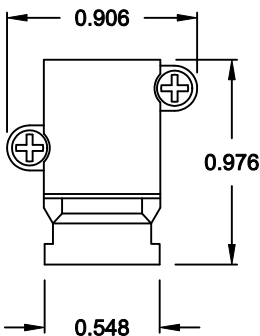
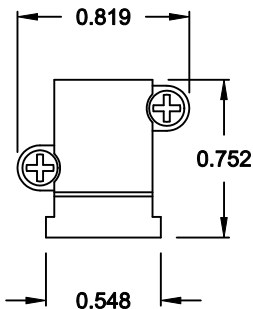
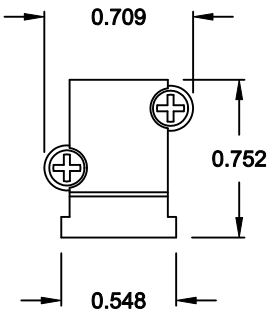
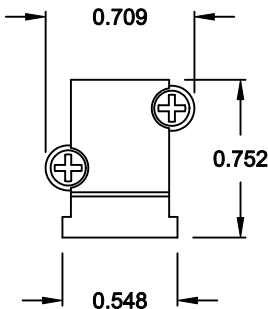
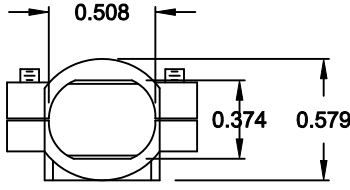
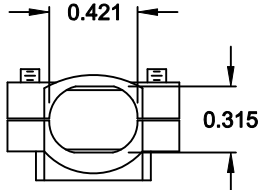
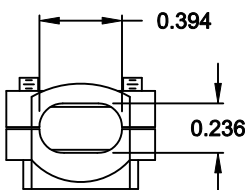
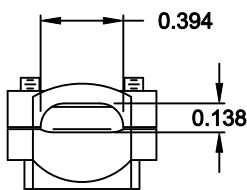
DIMENSIONS (IN.)					
No. OF PINS	A	B	C	D	E
09	1.740	0.606	0.984	1.299	0.354
15	1.740	0.606	1.312	1.626	0.394
25	1.740	0.606	1.852	2.165	0.433
37	1.740	0.606	2.500	2.815	0.433

DO NOT SCALE FROM DRAWING

	THESE DRAWINGS AND SPECIFICATIONS ARE THE PROPERTY OF NorComp AND SHALL NOT BE REPRODUCED, COPIED OR USED AS THE BASIS FOR THE MANUFACTURE OF SALE OF APPARATUS WITHOUT WRITTEN PERMISSION.	DRAWN: C. SMITH		DATE: 04-10-07		
		CHECKED:		DATE:		
<h1>NorComp</h1>		SCALE: 1 : 1		SHEET 1 OF 2		REV 1
		DWG NO. 955-YYY-030R121				

RoHS COMPLIANT

CABLE CLAMPS ORDERED SEPARATELY



P/N 955-09-SR-4-7
CABLE RANGE = 0.157 - 0.276


P/N 955-15-SR-7-10
CABLE RANGE = 0.276 - 0.394

P/N 955-25-SR-9-12
CABLE RANGE = 0.354 - 0.472

P/N 955-37-SR-11-14
CABLE RANGE = 0.433 - 0.551

DO NOT SCALE FROM DRAWING

RoHS COMPLIANT

	THESE DRAWINGS AND SPECIFICATIONS ARE THE PROPERTY OF NorComp AND SHALL NOT BE REPRODUCED, COPIED OR USED AS THE BASIS FOR THE MANUFACTURE OF SALE OF APPARATUS WITHOUT WRITTEN PERMISSION.		DRAWN: C. SMITH		DATE: 04-10-07	
			CHECKED:		DATE:	
	NorComp		SCALE: 1 : 1	SHEET 2	OF 2	REV 1
DWG NO. 955-YYY-030R121						