

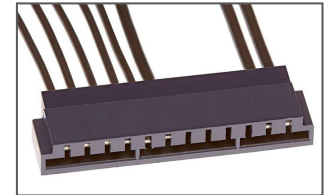
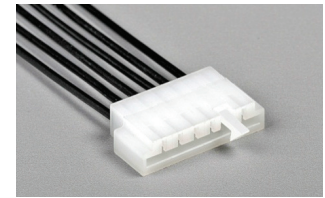
EdgeMate™ Wire-to-Edge-Card Power Connectors, 3.96mm Pitch, with Positive Lock

molex®

Available in glow-wire-compatible versions, EdgeMate™ power connectors eliminate the need for mating headers, offering significant cost savings in appliance, industrial and lighting applications

Features and Benefits

| | |
|---|---|
| Mates directly to the PCB edge card without a mating header | Reduced inventory, bill-of-material and manufacturing costs without having to invest in headers |
| Glow-wire compatible versions (meeting IEC 60355-1 safety standards) | Ensures safety and protection of end-users in the event of glow-wire overload |
| Positive-lock design (applicable to non glow-wire-compatible versions only) | Offers strong PCB-to-connector retention |
| Polarized housing | Ensures correct orientation with the PCB |
| Bifurcated (dual contact-point) terminals support up to 7.0A current | Allows secondary current paths for long-term electrical performance and reliability |
| Polarized crimp terminal | Ensures correct terminal orientation and insertion |
| Connectors without locking features (option) | Give pricing flexibility to suit customer needs |



EdgeMate™ Wire-to-Edge Card Power Interconnects, with and without locking feature

Applications

Consumer/Home Appliances

- Fitness
- Home Appliances
- Home Entertainment
- HVAC

Industrial

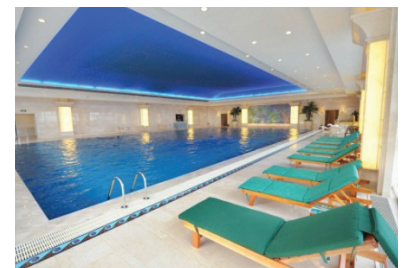
- Power (Power Supplies, UPS)
- Wire-to-Device

Solid State Lighting

- Indoor and Outdoor Illumination



Consumer Vehicles and Home Entertainment Systems



Indoor and Outdoor Lighting



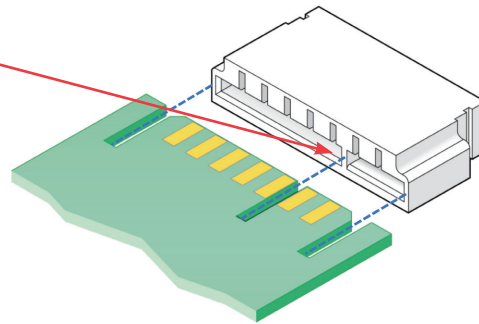
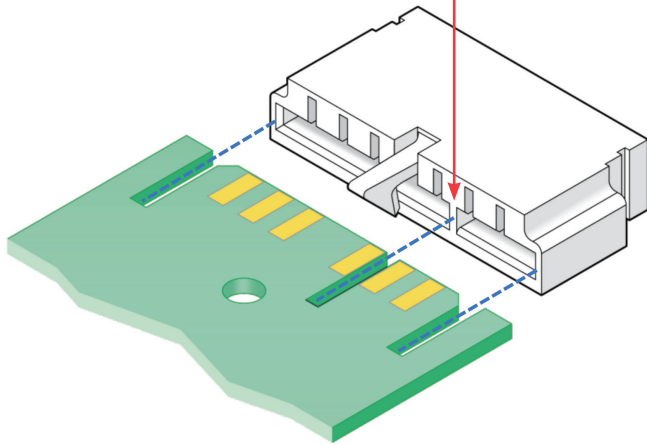
HVAC

EdgeMate™ Wire-to-Edge-Card Power Connectors, 3.96mm Pitch, with Positive Lock

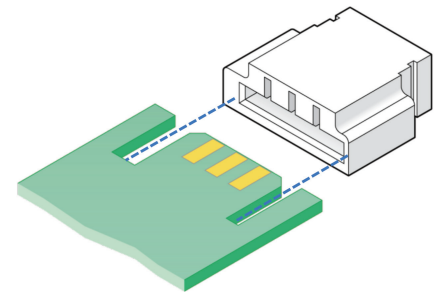
molex®

Product Features

Polarization rib on connector housing provide fool-proof mating to PCB whether in locking or non-locking versions



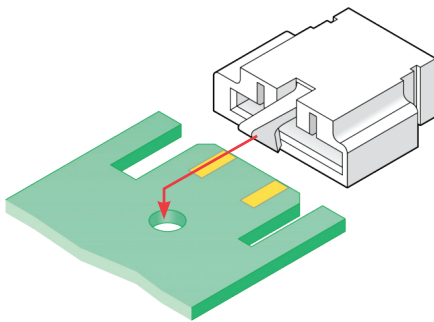
Inner-rib polarization feature of a non-locking housing



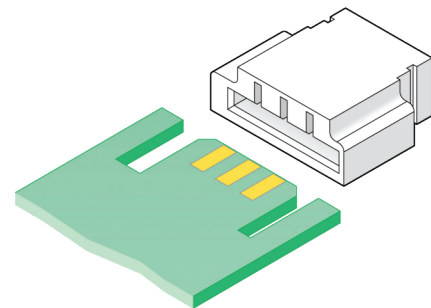
Polarization ribs on the connector housing ensure correct mating to PCB circuitry

Thick-wall polarization feature of a non-locking housing

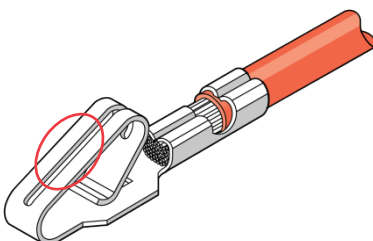
Additional Product Features



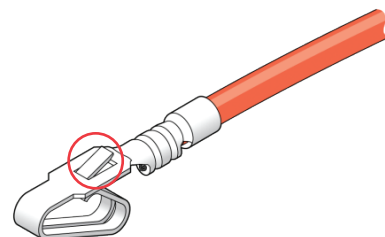
A PCB with hole is used with locking connector version



A PCB without hole is used with a non-locking version connector



The bifurcated crimp terminal offers 2 points of contact (or secondary paths) for long-term electrical reliability



Reverse side of crimped terminal showing locking tang feature which prevents accidental terminal back-out once inserted into the housing cavity

EdgeMate™ Wire-to-Edge-Card Power Connectors, 3.96mm Pitch, with Positive Lock



Specifications

Reference Information

Packaging:
 Bag for Housing;
 Reel for Terminals
 Mates With: Edge Card PCB (circuit size determined by customer)
 Terminal Used: Series 172160
 Designed In: Millimeters
 RoHS: Yes
 Halogen Free: Yes
 Glow Wire Compliant:
 Refer table below

Electrical

Voltage (max.): 600V AC/DC
 Current (max.):
 7.0A (Phosphor Bronze)
 5.0A (Brass)
 Contact Resistance (max.):
 10 milliohms
 Dielectric Withstanding Voltage: 1000V
 Insulation Resistance (min.):
 1000 Megohms

Mechanical

Contact Insertion Force (max.): 17.8N
 Contact Retention to Housing (min.): 35.6N
 Durability (min.): 25 cycles

Physical

Housing:
 Nylon 6/6 and Glow-wire UL94-V2
 Plating:
 Contact Area — Refer Table
 Underplating — Nickel (Ni)
 PCB Thickness: 1.57mm
 Operating Temperature:
 Brass Terminals -40° to +80°C
 Phosphor Bronze Terminals
 -40° to +105°C

* Including terminal temperature rise when applying electrical current.

Ordering Information

Crimp Terminals

| Part No. | Wire Range | Base Material | Finish |
|-----------------------------|------------|-----------------|------------------|
| 172160-1802 | 18-20 AWG | Phosphor Bronze | Select Gold (Au) |
| 172160-1803 | | | Tin (Sn) |
| 172160-1805 | | Brass | Select Gold (Au) |
| 172160-1806 | | | Tin (Sn) |

Housing with Positive Lock

| Part No. | Circuits | Part No. | Circuits |
|-----------------------------|----------|-------------|----------|
| 172159-0502 | 2 | 172159-0608 | 8 |
| 172159-0503 | 3 | 172159-0609 | 9 |
| 172159-0604 | 4 | 172159-0610 | 10 |
| 172159-0605 | 5 | 172159-0611 | 11 |
| 172159-0606 | 6 | 172159-0612 | 12 |
| 172159-0607 | 7 | - | - |

Housing without Lock

| Part No. | Circuits | Part No. | Circuits |
|-----------------------------|----------|-------------|----------|
| 172159-0003 | 3 | 172159-0208 | 8 |
| 172159-0004 | 4 | 172159-0209 | 9 |
| 172159-0205 | 5 | 172159-0210 | 10 |
| 172159-0206 | 6 | 172159-0211 | 11 |
| 172159-0207 | 7 | 172159-0212 | 12 |

Housing without Lock (Glow-wire compatible versions)

| Part No. | Circuits | Part No. | Circuits |
|-----------------------------|----------|-------------|----------|
| 172879-0003 | 3 | 172879-0208 | 8 |
| 172879-0004 | 4 | 172879-0209 | 9 |
| 172879-0205 | 5 | 172879-0210 | 10 |
| 172879-0206 | 6 | 172879-0211 | 11 |
| 172879-0207 | 7 | 172879-0212 | 12 |

www.molex.com/link/edgemate.html