

Han EMC Base Panel

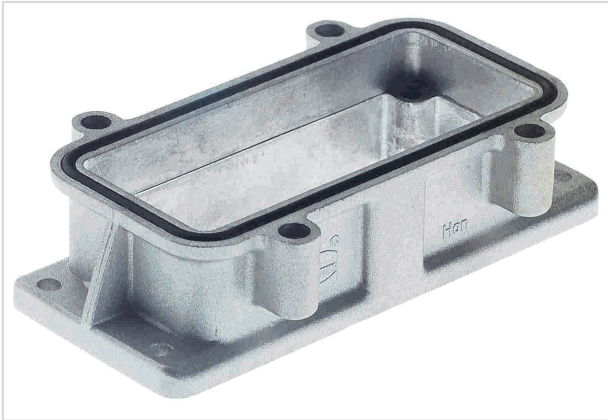


Image is for illustration purposes only. Please refer to product description.

Part number	09 62 010 0301
Specification	Han EMC Base Panel
HARTING eCatalogue	https://b2b.harting.com/09620100301

Identification

Category	Hoods/Housings
Series of hoods/housings	Han [®] EMC
Type of hood/housing	Bulkhead mounted housing

Version

Size	10 B
Locking type	Screw locking
Field of application	Hoods/Housings for higher EMC requirements

Technical characteristics

Limiting temperature	-40 ... +125 °C
Degree of protection acc. to IEC 60529	IP65
Type rating acc. to UL 50 / UL 50E	4 12

Material properties

Material (hood/housing)	Aluminium die-cast
Surface (hood/housing)	Uncoated
Colour (hood/housing)	Unpainted
Material (seal)	NBR
RoHS	compliant
ELV status	compliant
China RoHS	e



Pushing Performance
Since 1945

Material properties

REACH Annex XVII substances	Not contained
REACH ANNEX XIV substances	Not contained
REACH SVHC substances	Not contained
California Proposition 65 substances	Yes
California Proposition 65 substances	Naphthalene

Specifications and approvals

Approvals	DNV GL
UL / CSA	UL 1977 ECBT2.E235076 CSA-C22.2 No. 182.3 ECBT8.E235076
CE	Yes

Commercial data

Packaging size	1
Net weight	114.9 g
Country of origin	Germany
European customs tariff number	85389099
eCl@ss	27440202 Shell for industrial connectors