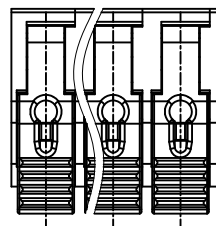
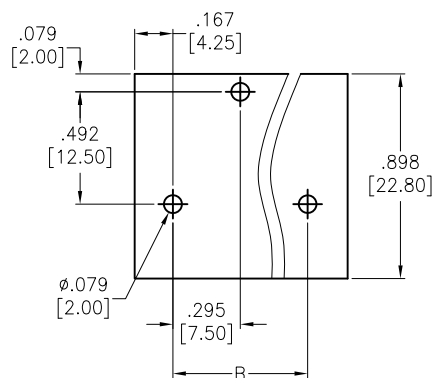


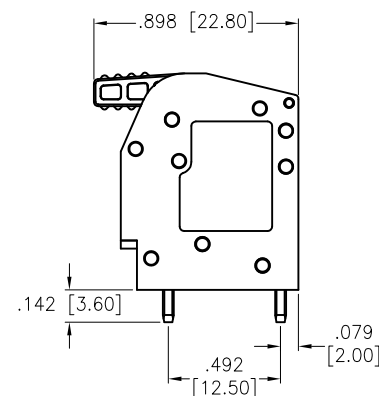
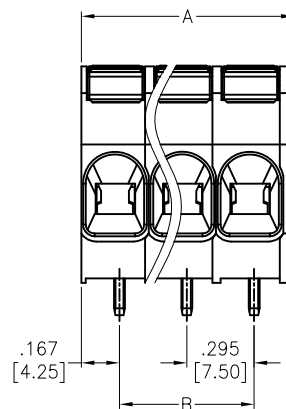
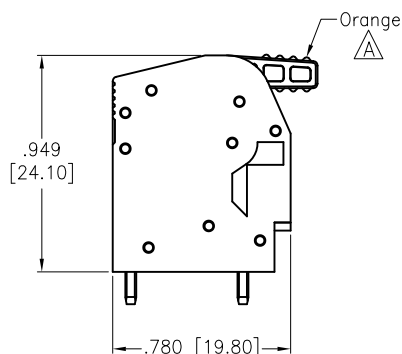
APPROVED: _____

DATE: _____ TITLE: _____

Rev	AWO #	Description	Date	Appr
-		RELEASED	10/11/18	
A		ADDED SPEC.	3/2/20	OW/RC



RECOMMENDED PCB LAYOUT



SPECIFICATIONS:

Material:

Insulator: PA, rated UL 94V-0

Insulator color: Green

Pin Header: Copper Alloy, Tin plated

Electrical:

Voltage rating: 600 V

Current rating: 27 A

Dielectric withstanding voltage: 2,200 V for 1 minute

Mechanical:

Wire range: 24~10AWG

Wire strip length: 15~16mm

Temperature Rating:

-40°C to +105°C

Environmental:

Lead free, RoHS compliant.



Positions: 02 thru 16

A= .295 [7.50] x No. of Positions + .047 [1.20]

B= .295 [7.50] x No. of Space

UNLESS OTHERWISE SPECIFIED ALL DIMENSIONS ARE INCHES [MM] TOLERANCES: EXCEPT AS NOTED			<div>ADAM TECH</div> INTERCONNECTS		909 Rahway Avenue, Union, NJ 07083 Phone: 908-687-5000 Fax: 908-687-5710	
INCHES HOLES						
.X ± .10 ØX ± .10 .XX ± .020 ØXX ± .015 .XXX ± .015 ØXXX ± .010			TITLE 			