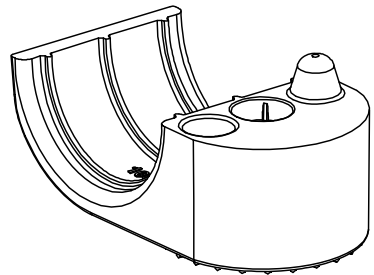
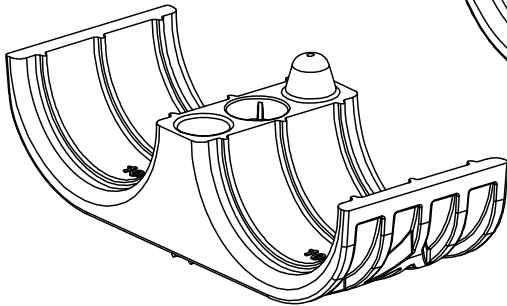


PART NUMBER	"L "	"W"	"H"	Ø A	Ø B	C REF.	Ø D REF.	E REF.	WEIGHT grams/100pcs
CLC100X3S8**	4.3 [110]	1.1 [28]	0.7 [18]	1.11 [28.2]	1.03 [26.1]	1.5 [38]	0.32 [8]	1.5 (38)	1,748
CLC100X2S8**	2.8 [72]							N/A	1,071
CLC100X1S8**	1.9 [50]							N/A	896
CLC88X3S8**	4.3 [110]			1.05 [26.7]	0.93 [23.7]			1.5 (38)	1,916
CLC88X2S8**	2.8 [72]							N/A	1,183
CLC88X1S8**	1.9 [50]							N/A	953
CLC75X3S8**	4.3 [110]			0.94 [23.8]	0.83 [21.2]			1.5 (38)	2,114
CLC75X2S8**	2.8 [72]							N/A	1,315
CLC75X1S8**	1.9 [50]							N/A	1,018
CLC62X3S8**	4.3 [110]			0.82 [20.7]	0.70 [17.7]			1.5 (38)	2,307
CLC62X2S8**	2.8 [72]							N/A	1,443
CLC62X1S8**	1.9 [50]							N/A	1,083

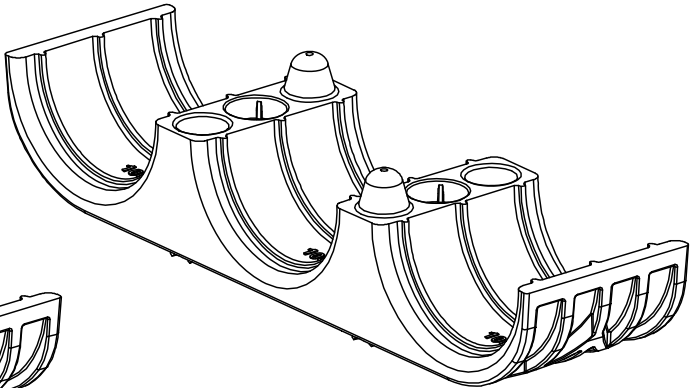
- NOTES:
- MATERIAL: PA6.6 13% GF HEAT STABLE PER ASTM D4066, BLACK IN COLOR
 - FINISH: PLAIN
 - CONTINUOUS OPERATING TEMPERATURE: -40°F TO 275°F
 - QUANTITY OF ONE (1) PART IS AS SHOWN. QUANTITY OF TWO (2) PARTS NEEDED FOR A COMPLETE CLAMP.



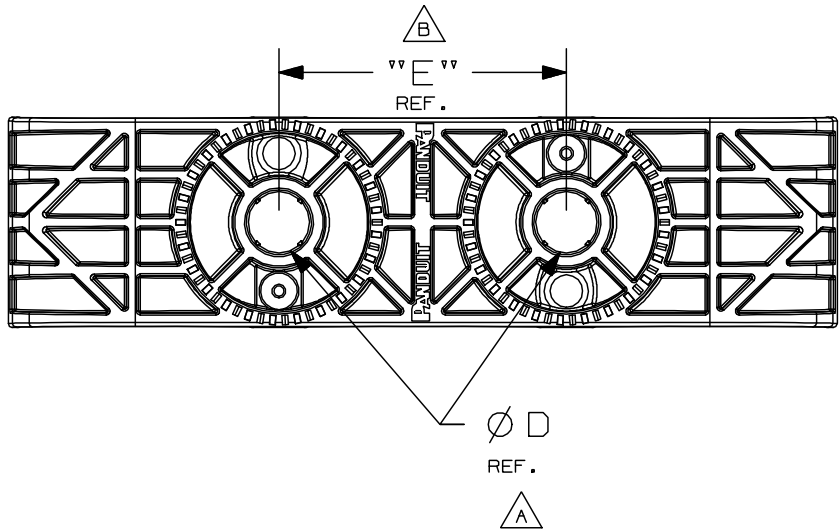
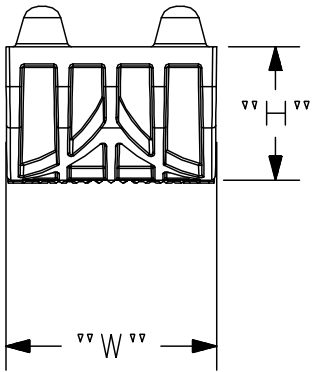
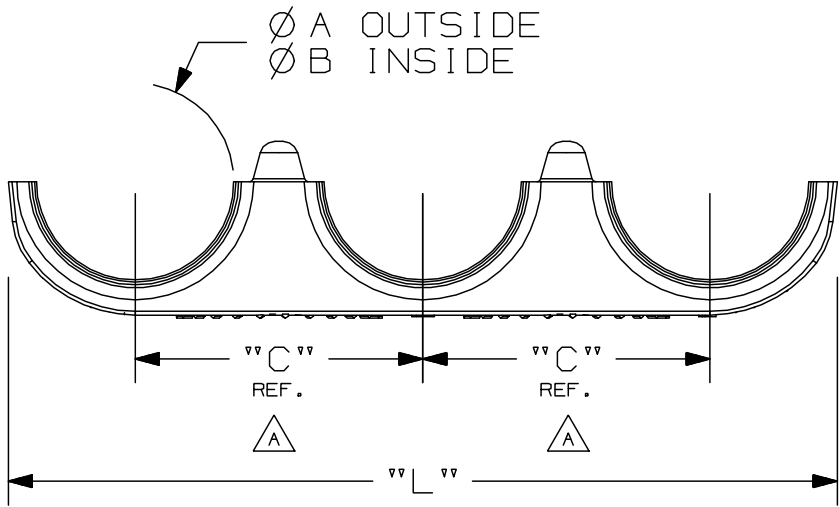
CLC**X1S8**



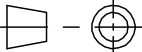
CLC**X2S8**



CLC**X3S8**



REV	DATE	BY	CHK	APR	DESCRIPTION	ECN
03	3/3/22	DJSL	DAEI	ALP	C. UPDATED PART WEIGHTS	1004880/03
02	2/2/22	DJSL	DAEI	ALP	B. ADDED "E" DIMENSION	1004880/02
01	8/2/21	DJSL	DAEI	ALP	A. UPDATED DIMENSION AS REFERENCE	1004880/01
00	2/26/21	DJSL	LAH	ALP	DRAWING RELEASED	1004880/00

TITLE				
CORRIGATED LOOM CLAMP				
CUSTOMER DRAWING				
ITEM REVISION NAME		<div>PANDUIT</div>		
00875EAA/03				
DATASET FILE NAME		MATERIAL:		
00875EAA_DC/03				
<div>UNLESS OTHERWISE SPECIFIED, DIMENSIONAL TOLERANCES ARE: IN [mm]</div> <div><div>.X ± .1 [2.54]</div><div>.XXX ± .005 [.127]</div><div>.XX ± .01 [.25]</div><div>ANGLES ± 1°</div></div> <div><div></div><div>THIRD ANGLE PROJECTION</div></div>			PA 6.6	
			13% GLASS, HEAT STABLE	
<div>DRAWING NUMBER:</div> <div>00875EAA_DC</div>			SIZE	
DRAWN BY	DATE	CHK	SCALE	
DJSL	2/26/21	LAH	FULL	SHT 1 OF 1
				<div>B</div>