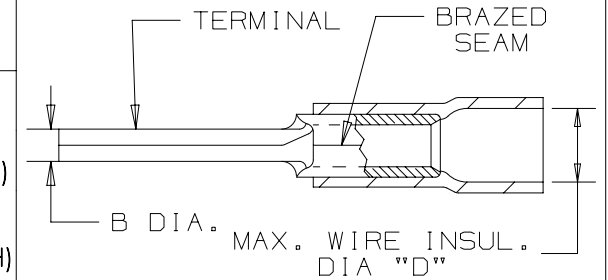


THIS COPY IS PROVIDED ON A RESTRICTED BASIS AND IS NOT TO BE USED IN ANY WAY DETRIMENTAL TO THE INTERESTS OF PANDUIT CORP.

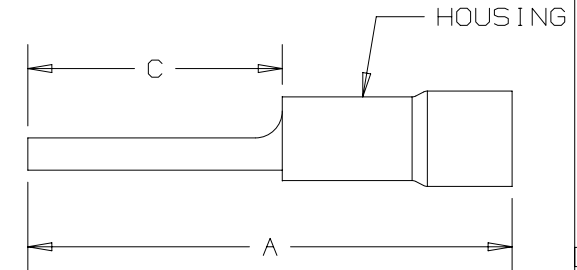
PANDUIT PART #	WIRE RANGE		MAX. WIRE INSUL. DIA.	HOUSING COLOR	DIMENSIONS in. [mm]				TOOLS
	ENGLISH	METRIC			A ± .03 [0,8]	B ± .01 [0,3]	C ± .02 [0,3]	D DIA	
PV18-P47	22-18	0,5-1,0	.15 [3,8]	RED	.97 [24,6]	.07 [1,8]	.49 [12,4]	.15 [3,8]	CT-100# **CT-260 CT-600A (CT-550CH) CT-1550 CT-1551 CT-2500 (CT-2550CH)
PV14-P47	16-14	1,5-2,5	.17 [4,3]	BLUE	.97 [24,6]	.07 [1,8]	.49 [12,4]	.17 [4,3]	
PV10-P55*	12-10	4,0-6,0	.25 [6,4]	YELLOW	1.10 [27,9]	.10 [2,5]	.55 [14,0]	.25 [6,35]	



\*NOT UL LISTED  
\*\*PANDUIT APPROVED TOOL

NOTES:

- UL LISTED FOR:
  - A. SOLID OR STRANDED COPPER WIRE ONLY
  - B. 221°F [105°C] MAX. OPERATING TEMPERATURE
  - C. 600V. MAX. VOLTAGE RATING
- SEE [www.panduit.com](http://www.panduit.com) FOR PACKAGE QUANTITIES
- MATERIAL:
  - A. STAMPING: .03" [0,8] THK COPPER, TIN PLATED
  - B. HOUSING: VINYL, COLOR CODED
- DIMENSIONS IN BRACKETS ARE METRIC EQUIVALENT
- WIRE STRIP LENGTH: 5/16" <sup>+1/32</sup> [7,9 <sup>+0,8</sup>]
- TOOLS MAY BE FOLLOWED BY A LETTER TO DESIGNATE REVISION.



LISTED  
587H  
E52164

REV	DATE	BY	CHK	APR	DESCRIPTION	ECN	TITLE	ITEM REVISION NAME	DATASET FILE NAME	MATERIAL:	DRAWING NUMBER:
							PIN TERMINAL, VINYL INSULATED, FUNNEL ENTRY CUSTOMER DRAWING	N41335BA/15	N41335BA/15	SEE NOTES	A41335
15	9/19	JHNU	TMR	MRJS	REVISED LISTING: UL WAS cULus ADDED NOTE 6	051570					
14	8/14	MBY	JHNU	RGB	REVISED NOTES, MOVED TOOLS TO TABLE, REVISED CERTIFICATION	N41335BA-A41335					
							UNLESS OTHERWISE SPECIFIED, DIMENSIONAL TOLERANCES ARE: IN [mm]				
							.X ± .XX ±	.XXX ± ANGLES ±			
							THIRD ANGLE PROJECTION				
							DRAWN BY DAW	DATE -	CHK RLS	SCALE N.T.S.	SHT 1 OF 1
											SIZE A

D101000DA/16