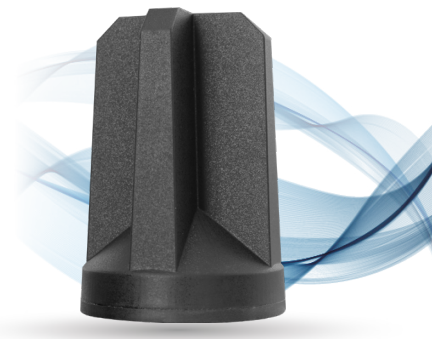


# OPTOMX<sup>®</sup>

## Up to 2-in-1 Salt Shaker High Performance External IP67 Antenna

OPTOMX is a MIL-STD-810G qualified fully rugged outdoor antenna designed specifically for M2M applications. This antenna provides best in class performance, providing up to two high gain cellular/LTE antennas inside a single robust and compact housing.

- Up to 2 x Wideband Cellular/LTE Elements
- Must be mounted on metal
- Available in black or white
- MIL-STD-810G qualified
- US Patent 10109918



## Descriptions/Applications

The OPTOMX antenna builds on the best in class RF performance, leading design, features, and extended product life tradition of this highly successful product line. Ideal for charging stations, kiosks, digital signage, NEMA enclosures, wireless ATMs, vending machines, industrial metering and other wireless machine to machine applications. This antenna has been designed to mount externally to an M2M or IoT enabled asset, and requires no servicing through its life time.

## Standard Configurations

Configuration	Cellular Elements	Wi-Fi Elements	GNSS	Part Number	Description
2-in-1	2	0	No	<b>AP-M2M3-CC-Q-S22-BL</b>	MIMO Cell/LTE x 2, Threaded bolt mount, SMA x 2, Black, 15ft coax
Single Cellular	1	0	No	<b>AP-M2M3-C-Q-S2-BL</b>	Cell/LTE x 1, Threaded bolt mount, SMA x 1, Black, 15ft coax

## Electrical Data

Frequency Range	Elements 1 up to 2		698-960/1700-2700 MHz
Operational Bands	Elements 1 up to 2		LTE/Cellular
Peak Gain: Isotropic	Elements 1 up to 2	698-960 MHz	3.5 dBi
		1710-2700 MHz	5.0 dBi
Isolation	Elements 1 up to 2		> 10 dB
Correlation Co-efficient	Elements 1 up to 2		< 0.3

## Environmental Data

Hazardous Substances	RoHS Compliant
Temperature	-40°C to 65°C (-40°F to + 149°F) Operating and Storage conformance to IEC 60068
Humidity (Non-Condensing)	5% to 96% Operating and Storage conformance to IEC 60068
Water Ingress	IP67
Military Spec	MIL-STD 810 conformance to vibration

## Mounting Data

Dimensions	Height	3.62" (92mm)
	Diameter	2.49" (63.3mm)
Color	Black (BL) or White (WH)	

## Cable Data

Cell/LTE Cables	Type	CFD195 Low Loss
	Diameter	0.195" (4.953 mm)
	Length	1 feet (0.3 m)
	Termination	SMA Male