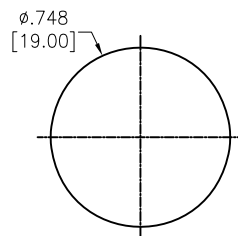
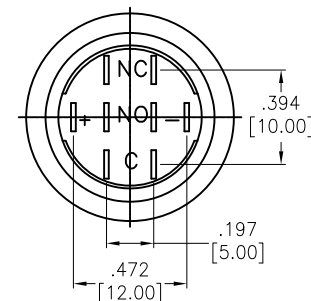
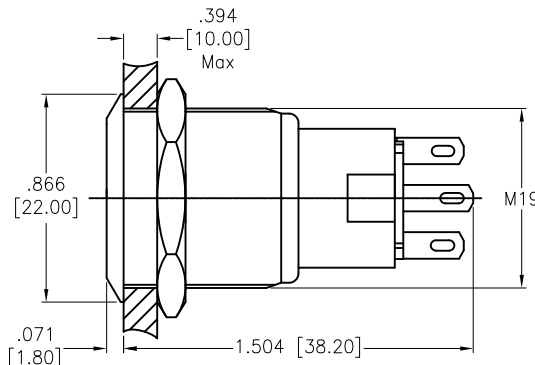
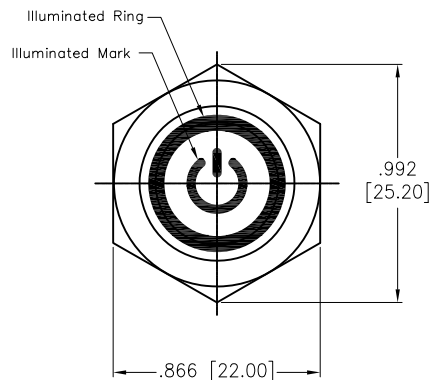
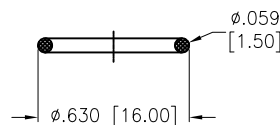


APPROVED: \_\_\_\_\_  
 DATE: \_\_\_\_\_ TITLE: \_\_\_\_\_

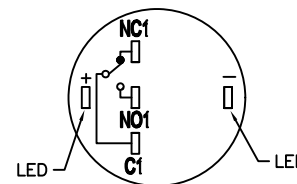
Rev	AWO #	Description	Date	Appr
-		RELEASED	11/2/21	
A		UPDATE SPEC.	11/12/21	WX/RC



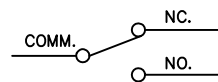
RECOMMENDED PANEL CUT  
 MAX.PANEL THICKNESS 10mm



SEAL RING



CIRCUIT



LATCHING  
CIRCUIT DIAGRAM  
 (SPDT)

SW-PB7-03LB22CFPXXXXX

"x"	LED Color	LED Voltage	
R	Red	6V	6V AC/DC
G	Green	12V	12V AC/DC
Y	Yellow	24V	24V AC/DC
B	Blue	110V	110V AC/DC
W	White	220V	220V AC/DC

**SPECIFICATIONS:**

**Material:**

Body: PBT, Rated UL94V-0

Bushing: Stainless Steel, Varnish polished

Button: Stainless Steel, Varnish polished

Contact Material: Silver Alloy, (2.8x0.5mm)

Nut: Brass, Nickel plated

**Electrical:**

Voltage rating: 250V

Current rating: 5A max

Contact resistance: 50 mΩ max.

Insulation resistance: 1000M ohms min @ 500V DC.

Dielectric withstanding voltage: 2000V RMS, 50~60Hz.

Electrical Life: 50,000 cycles min at full load.

**Mechanical:**

Torque: 0.6Nm max.

Temperature Rating:

Operating temperature: -25°C to +55°C

**Environmental:**

Sealed IP67 Rated

Lead free, RoHS compliant



UNLESS OTHERWISE SPECIFIED ALL DIMENSIONS  
 ARE INCHES [MM]. TOLERANCES: EXCEPT AS NOTED

INCHES	HOLES
.X ±.10	Ø.X ±.10
.XX ±.020	Ø.XX ±.015
.XXX ±.015	Ø.XXX ±.010

DRAWN	JJ	11/2/21
CHECKED	RC	11/2/21
APPROVED		

THIS DRAWING CONTAINS INFORMATION THAT IS PROPRIETARY  
 AND SHOULD NOT BE USED WITHOUT PRIOR WRITTEN  
 PERMISSION FROM ADAM TECH



909 Rahway Avenue,  
 Union, NJ 07083  
 Phone: 908-687-5000  
 Fax: 908-687-5710

TITLE SWITCH, ANTI-VANDAL, PUSH BUTTON,  
 19mm, LIGHTED RING, SPDT, LATCHING, N.O.-N.C.

SIZE X	PART NO. SW-PB7-03LB22CFPXXXXX	REV. A
REF: S00198T	SCALE: NTS	SHEET 1 OF 1