

6

5

4

3

2

1

APPROVED: _____

DATE: _____ TITLE: _____

Rev

AWO #

Description

Date

Appr

-

RELEASED

8/16/21

D

D

C

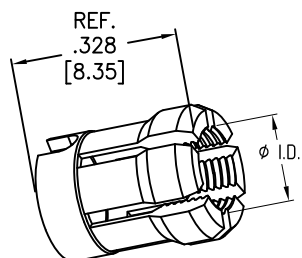
C

B

B

A

A



CABLE COLLET

MMI-POM-COL-XX-IP6X

| CABLE COLLET SIZE | |
|-------------------|--------------------|
| 32 | = 2.2mm ~ 3.2mm ID |
| 42 | = 3.2mm ~ 4.2mm ID |
| 45 | = 3.5mm ~ 4.5mm ID |
| 52 | = 4.2mm ~ 5.2mm ID |

SPECIFICATIONS:

Material:

Brass, Natural Chrome plated

Environmental:

Lead free, RoHS compliant



UNLESS OTHERWISE SPECIFIED
ALL DIMENSIONS ARE INCHES [MM]
TOLERANCES: EXCEPT AS NOTED
INCHES HOLES
.X ± .10 Ø.X ± .10
.XX ± .020 Ø.XX ± .015
.XXX ± .015 Ø.XXX ± .010

| APPROVALS | | DATE |
|-----------|----|---------|
| DRAWN | SS | 8/16/21 |
| CHECKED | SS | 8/16/21 |
| APPROVED | | |

ADAM
TECH

909 Rahway Avenue,
Union, NJ 07083
Phone: 908-687-5000
Fax: 908-687-5710

TITLE
PUSH-PULL METAL COLLET FOR MALE
METAL PLUG SIZE 0, IP67 & IP68

| | | |
|--------------|---------------------------------|--------------|
| SIZE X | PART NO. MMI-POM-COL-XX-IP6X | REV. - |
| REF: SXXXXXX | SCALE: NTS | SHEET 1 OF 1 |

6

5

4

3

2

1