

Han 10 A-asg1-LB-16

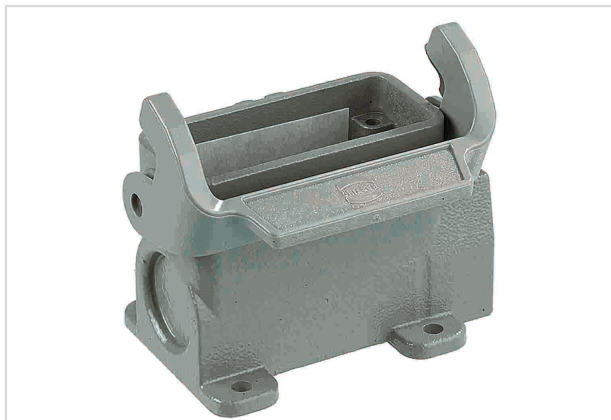


Image is for illustration purposes only. Please refer to product description.

Part number	09 20 010 0251
Specification	Han 10 A-asg1-LB-16
HARTING eCatalogue	https://b2b.harting.com/09200100251

Identification

Category	Hoods/Housings
Series of hoods/housings	Han A [®]
Type of hood/housing	Surface mounted housing
Type	Low construction

Version

Size	10 A
Version	Side entry
Cable entry	1x Pg 16
Locking type	Single locking lever
Han-Easy Lock [®]	Yes
Field of application	Standard Hoods/housings for industrial applications

Technical characteristics

Limiting temperature	-40 ... +125 °C
Degree of protection acc. to IEC 60529	IP65
Type rating acc. to UL 50 / UL 50E	4 4X 12

Material properties

Material (hood/housing)	Aluminium die-cast
Surface (hood/housing)	Powder-coated
Colour (hood/housing)	RAL 7037 (dust grey)



Pushing Performance
Since 1945

Material properties

Material (locking)	Polycarbonate (PC) Stainless steel
Colour (locking)	RAL 7037 (dust grey)
Material flammability class acc. to UL 94 (locking levers)	V-0
RoHS	compliant
ELV status	compliant
China RoHS	e
REACH Annex XVII substances	Not contained
REACH ANNEX XIV substances	Not contained
REACH SVHC substances	Yes
REACH SVHC substances	Potassium 1,1,2,2,3,3,4,4,4-nonafluorobutane-1-sulphonate
California Proposition 65 substances	Yes
California Proposition 65 substances	Lead Nickel
Fire protection on railway vehicles	EN 45545-2 (2020-08)
Requirement set with Hazard Levels	R1 (HL 1-3) R7 (HL 1-3)

Specifications and approvals

Approvals	DNV GL
UL / CSA	UL 1977 ECBT2.E235076 CSA-C22.2 No. 182.3 ECBT8.E235076
CE	Yes

Commercial data

Packaging size	1
Net weight	152.3 g
Country of origin	Germany
European customs tariff number	85389099
GTIN	5713140039162
eCl@ss	27440202 Shell for industrial connectors