

CyClone Panel-to-Panel Connector System

molex[®]

Withstanding up to 10,000 mating cycles, the CyClone Wire-to-Wire Connector System incorporates proven SL™ receptacle technology to create a hermaphroditic, panel-mounted solution for applications such as printers and copiers

Features and Benefits

Extreme mating-cycle durability

Delivers extreme durability with 10,000 mating cycles

SL™ Modular Connector System Receptacles

Incorporates proven SL™ connector technology into a new connector system. Transforms the SL connector system into a panel-mount, high-mating-cycle part. Enables customers using the SL™ system to easily incorporate CyClone into their high-mating-cycle applications

Genderless (hermaphroditic) connectors

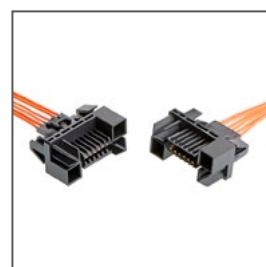
Increases operational efficiency and reduces customer inventories for cost savings. Ensures compatibility and mate-ability with no change-over of different application tooling setups, since it only uses one preset applicator machine

Positive-lock SL™ housing

Ensures retention in high-vibration environments by fastening the SL™ receptacle housing securely inside the CyClone connector.



CyClone Panel-to-Panel Connector System with SL™ Wire-to-Wire Inserts



CyClone Panel-to-Panel Connector System Mating Interface

Applications

Consumer Electronics

Copiers and Printers

Telecommunications/Networking

Hubs

Servers

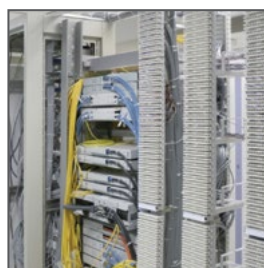
Industrial

Electronics Production Machinery

Automation



Office Copier



Servers



Automation

CyClone Panel-to-Panel Connector System

molex[®]

Specifications

REFERENCE INFORMATION

Packaging: Bulk in bag
UL File No.: E29179, 97NK35249
CSA File No.: LR 19980-508
Mates With: Self-mating
Use With: SL™ Modular Connectors
(Series: 70066 and 70400; Version G parts)
Designed In: Millimeters
RoHS: Yes
Halogen Free: No
Glow Wire Compliant: No

ELECTRICAL

Voltage (max.): 30V AC (RMS)/DC
Current (max.): 2.0A
Contact Resistance (max.): 30 milliohm
Dielectric Withstanding Voltage: 500 VAC
Insulation Resistance: 10,000 Megohms

MECHANICAL

Contact Retention to Housing (min.): 4.45N
Insertion Force to PCB (max.): 111.12N
Durability (min.): 10,000 cycles

PHYSICAL

Housing: Glass-filled Polyester
Pitch: 2.54mm
Contact: Copper Alloy
Plating:
Contact Area — Select Gold (1.27µm)
Solder Tail Area — Select Gold (0.38µm)
Underplating — Nickel
Operating Temperature: -40 to +105°C

Ordering Information

Series No.	Order No.	Circuit Size
73099	73099-3004	4
	73099-3005	5
	73099-3006	6
	73099-3007	7
	73099-3008	8
	73099-3009	9
	73099-3010	10
	73099-3011	11
	73099-3012	12

www.molex.com/link/cyclone.html