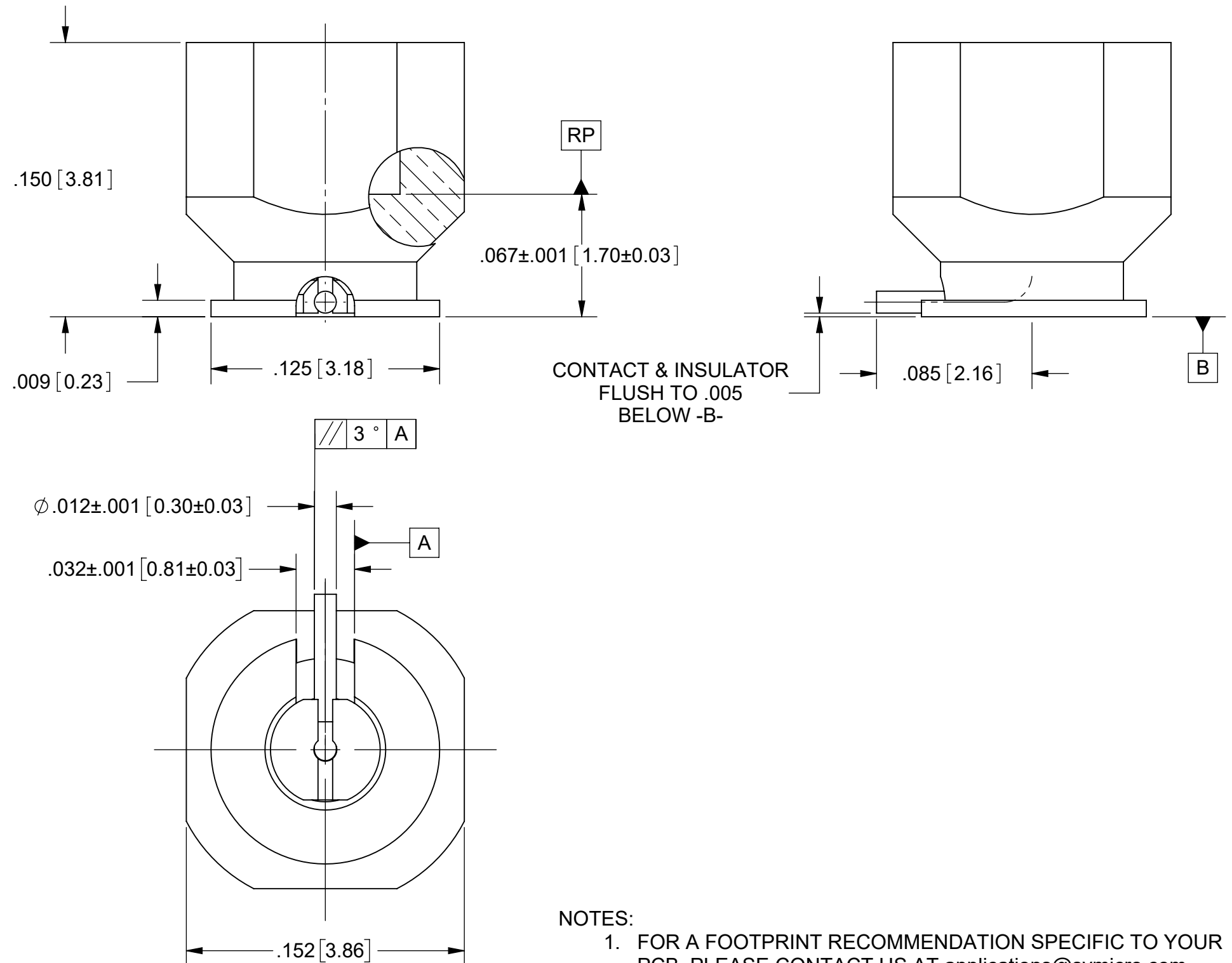


ROHS COMPLIANT

PRODUCT DATA DRAWING

| REVISION HISTORY | | | |
|------------------|-------------|-------|----------|
| REV | DESCRIPTION | DATE | APPROVED |
| - | NRN 44905 | 06/20 | STW |
| | | | |
| | | | |



MATERIAL:


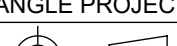
| | |
|-----------------|----------------------|
| BODY & CONTACT: | BERYLLIUM COPPER |
| INSULATOR: | POLYAMIDE-IMIDE(PAI) |

FINISH:

BODY & CONTACT: GOLD OVER COPPER

PERFORMANCE:

IMPEDANCE: 50 OHMS
FREQ. RANGE: DC TO 20.0 GHz.

| | | | | | | | |
|---|-----------|---|--|---|--|--|--|
| MATERIAL: | SEE NOTES | DIMENSIONS ARE IN INCHES TOLERANCES: | | UNLESS OTHERWISE SPECIFIED | |  www.svmicrowave.com | |
| FINISH: | SEE NOTES | FRACTIONAL: $\pm 1/64$ ANGULAR: $X^\circ \pm 1'0''$ $X^\circ X' \pm 15'$ | | 1) ALL DIMENSIONS ARE IN INCHES (MILLIMETERS) 2) ALL DIMENSIONS ARE AFTER PLATING. 3) BREAK CORNERS & EDGES .005 R. MAX. 4) CHAM. 1ST & LAST THREADS. 5) SURFACE ROUGHNESS 63-MIL-STD-10. 6) DIA. S ON COMMON CENTERS TO BE CONCENTRIC WITHIN .005 T.I.R. 7) REMOVE ALL BURRS | | TITLE: SMPM MALE SB (NON-MAGNETIC) SURFACE PC MOUNT W/ R/A CONTACT | |
| SURFACE AREA: | N/A | DECIMAL: .X $\pm .030$.XX $\pm .010$.XXX $\pm .005$ | | INTERPRET DIMENSIONS AND TOLERANCES PER ASME Y14.5M - 1994 | | SIZE DWG. NO. | |
| PROPRIETARY THE INFORMATION CONTAINED IN THIS DRAWING IS THE SOLE PROPERTY OF SV MICROWAVE, INC. ANY REPRODUCTION IN PART OR AS A WHOLE WITHOUT THE WRITTEN PERMISSION OF SV MICROWAVE, INC IS PROHIBITED. | | THIRD ANGLE PROJECTION | | DRAWN: KRR 06/11/20 | | 3211-40118 | |
| | |  | | CHECKED: STW 06/11/20 | | SCALE: 4:1 | |
| | | | | APPROVED: STW 06/11/20 | | SHEET 1 OF 1 | |