

# Alubos



Detailed product information  
can be found on  
[www.bopla.de](http://www.bopla.de)



- 5 profile variants
- 9 profile cross-sections
- Standard lengths ex warehouse
- Special lengths available at short notice
- Functional diecast aluminium end covers
- Good EMC shielding
- Design seals in 5 colours
- Wide range of accessories
- Good heat dissipation in combination with IP 65

**Colour:**

Black, similar to RAL 9005; special colours on request

**Protection class:**

ABP, ABPH: up to IP 65/DIN EN 60529; ABPU: IP 40/DIN EN 60529

**Enclosure material:**

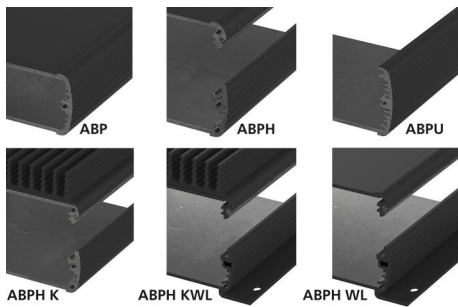
Extruded profiles: Al Mg Si 0.5 powder-coated; diecast lid: GB Al Si 12, powder-coated; seal: TPE; for details see Technical Information



**BOPLA**

A Phoenix Mecano Company

## Universal aluminium profile enclosure, IP 65



The flexible length and profile variants closed (ABP), horizontally-divided (ABPH), horizontally-divided with heat-sink (ABPH K) or open on one side (ABPU) offer the right enclosure for every application.



The recessed profile sides are suitable for fitting membrane keypads. The side surfaces are ergonomically designed.



Good EMC protection by means of contact surfaces which contact the lid to the profile. EMC seals are available if greater protection is required.



ABD – end cover with a recessed area for fitting front membranes or membrane keypads.



ABM...AL – mounting lid with a recessed mounting area. An aluminium cap with seal can be snapped on to achieve IP 65 protection.



ABM...SAL – Mounting lid with a hinged aluminium flap, IP 65



ABM...IR – mounting lid with a recessed mounting area. An infrared-permissive plastic cap can be snapped on to achieve IP 65 protection.

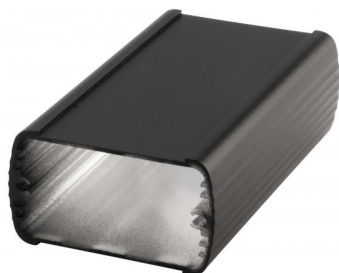


DI... – a black seal is included with all lids. Coloured seals and an EMC or UL 94 V0 seal are also available.



Various optional accessory components such as impact protection, wall brackets, tip-up and standard handles are available.

## Alubos | Enclosure profiles, closed

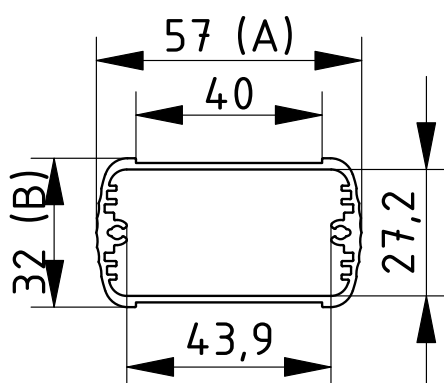


### ABP 600

| Model        | Order no. | A  | B  | C    |
|--------------|-----------|----|----|------|
| ABP 600-0100 | 84060100  | 57 | 32 | 100  |
| ABP 600-0150 | 84060150  | 57 | 32 | 150  |
| ABP 600-0200 | 84060200  | 57 | 32 | 200  |
| ABP 600-1000 | 84060000  | 57 | 32 | 1000 |

Scope Of Delivery: Enclosure profile

Notes: C = profile length, special lengths on request.



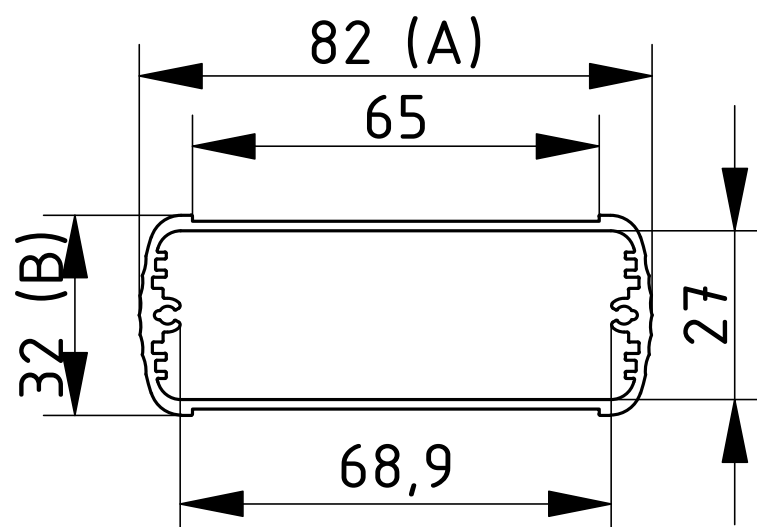
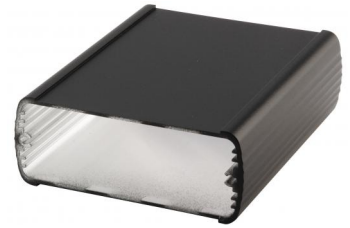
# Alubos | Enclosure profiles, closed

## ABP 800

| Model        | Order no. | A  | B  | C    |
|--------------|-----------|----|----|------|
| ABP 800-0100 | 84080100  | 82 | 32 | 100  |
| ABP 800-0150 | 84080150  | 82 | 32 | 150  |
| ABP 800-0200 | 84080200  | 82 | 32 | 200  |
| ABP 800-1000 | 84080000  | 82 | 32 | 1000 |

Scope Of Delivery: Enclosure profile

Notes: C = profile length, special lengths on request.



For accessories, please see the end of the chapter

## Alubos | Enclosure profiles, closed

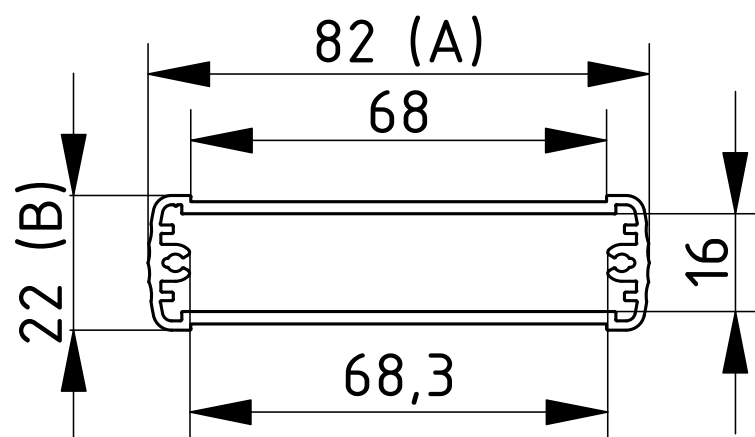


### ABP 820

| Model        | Order no. | A  | B  | C    |
|--------------|-----------|----|----|------|
| ABP 820-0100 | 84820100  | 82 | 22 | 100  |
| ABP 820-0150 | 84820150  | 82 | 22 | 150  |
| ABP 820-0200 | 84820200  | 82 | 22 | 200  |
| ABP 820-1000 | 84820000  | 82 | 22 | 1000 |

Scope Of Delivery: Enclosure profile

Notes: C = profile length, special lengths on request.



\* = Available on request



**BOPLA**

A Phoenix Mecano Company

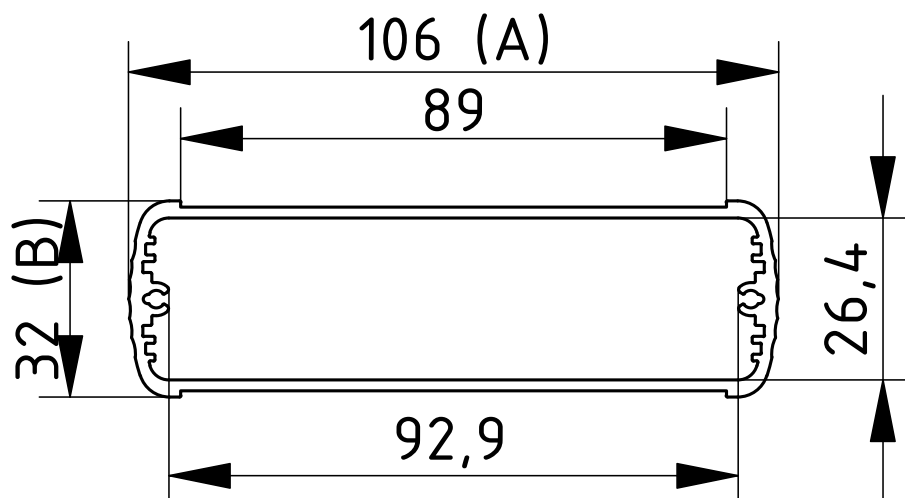
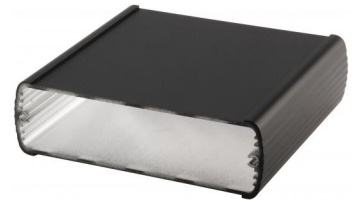
# Alubos | Enclosure profiles, closed

## ABP 1000

| Model         | Order no. | A   | B  | C    |
|---------------|-----------|-----|----|------|
| ABP 1000-0100 | 84100100  | 106 | 32 | 100  |
| ABP 1000-0150 | 84100150  | 106 | 32 | 150  |
| ABP 1000-0200 | 84100200  | 106 | 32 | 200  |
| ABP 1000-1000 | 84100000  | 106 | 32 | 1000 |

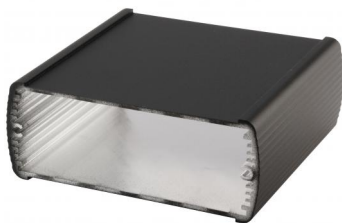
Scope Of Delivery: Enclosure profile

Notes: C = profile length, special lengths on request.



For accessories, please see the end of the chapter

## Alubos | Enclosure profiles, closed

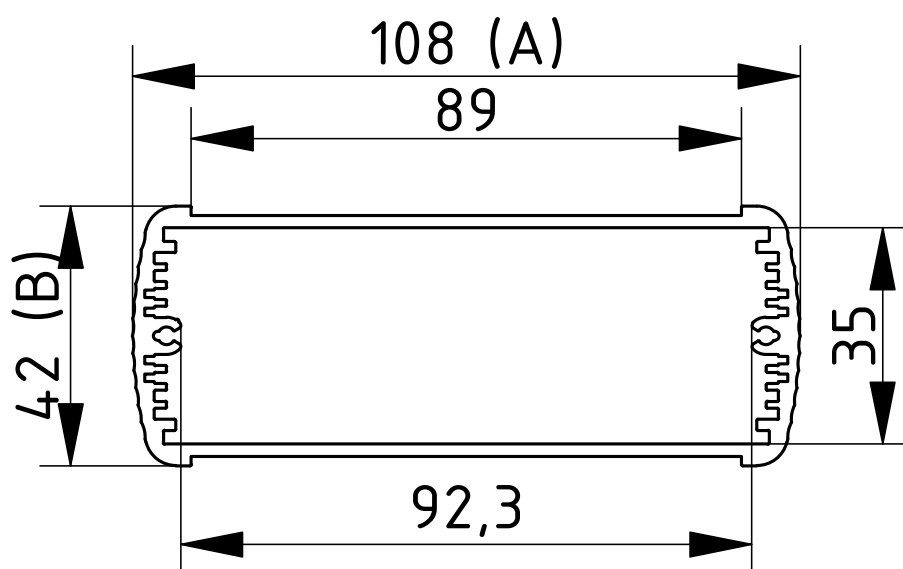


### ABP 1040

| Model         | Order no. | A   | B  | C    |
|---------------|-----------|-----|----|------|
| ABP 1040-0100 | 84040100  | 108 | 42 | 100  |
| ABP 1040-0150 | 84040150  | 108 | 42 | 150  |
| ABP 1040-0200 | 84040200  | 108 | 42 | 200  |
| ABP 1040-1000 | 84040000  | 108 | 42 | 1000 |

Scope Of Delivery: Enclosure profile

Notes: C = profile length, special lengths on request.



\* = Available on request

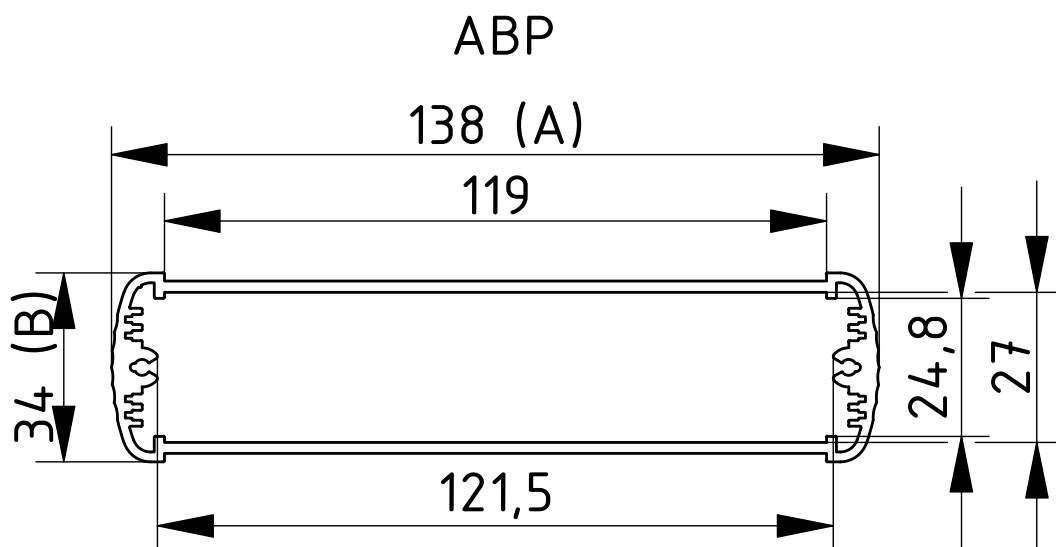
# Alubos | Enclosure profiles, closed

## ABP 1300

| Model         | Order no. | A   | B  | C    |
|---------------|-----------|-----|----|------|
| ABP 1300-0100 | 84130100  | 138 | 34 | 100  |
| ABP 1300-0150 | 84130150  | 138 | 34 | 150  |
| ABP 1300-0200 | 84130200  | 138 | 34 | 200  |
| ABP 1300-1000 | 84130000  | 138 | 34 | 1000 |

Scope Of Delivery: Enclosure profile

Notes: C = profile length, special lengths on request.



For accessories, please see the end of the chapter



## Alubos | Enclosure profiles, closed

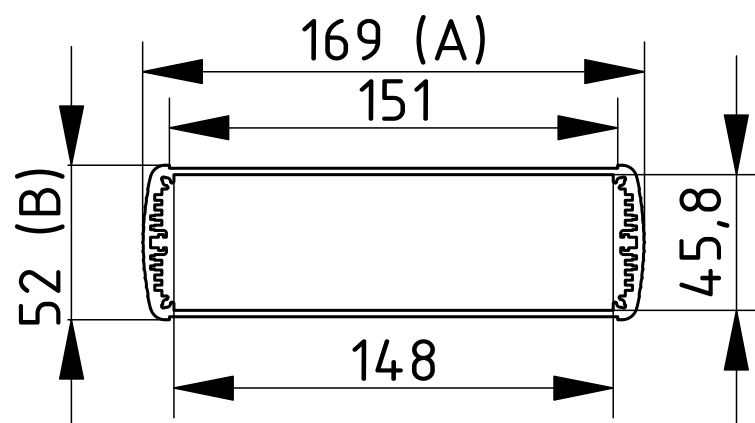


### ABP 1600

| Model         | Order no. | A   | B  | C    |
|---------------|-----------|-----|----|------|
| ABP 1600-0100 | 84160100  | 169 | 52 | 100  |
| ABP 1600-0150 | 84160150  | 169 | 52 | 150  |
| ABP 1600-0200 | 84160200  | 169 | 52 | 200  |
| ABP 1600-1000 | 84160001  | 169 | 52 | 1000 |

Scope Of Delivery: Enclosure profile

Notes: C = profile length, special lengths on request.



\* = Available on request

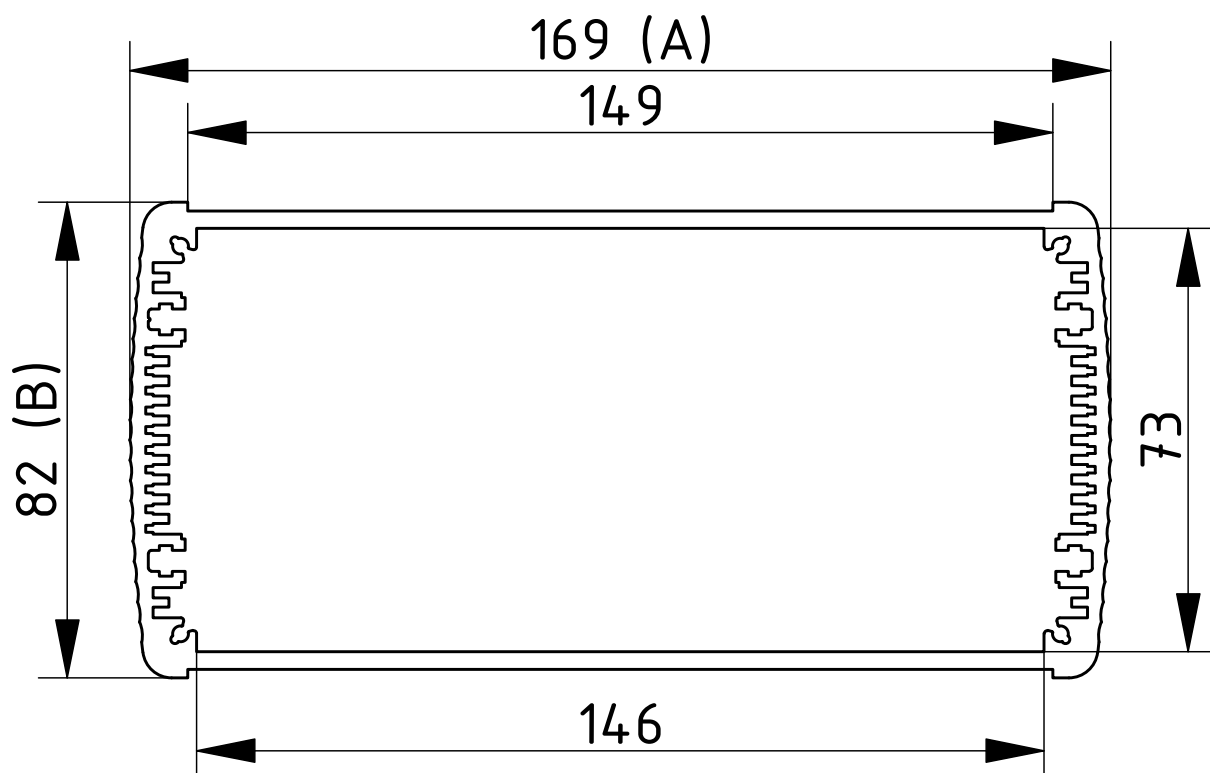
# Alubos | Enclosure profiles, closed

## ABP 1680

| Model         | Order no. | A   | B  | C    |
|---------------|-----------|-----|----|------|
| ABP 1680-0100 | 84680100  | 169 | 82 | 100  |
| ABP 1680-0150 | 84680150  | 169 | 82 | 150  |
| ABP 1680-0200 | 84680200  | 169 | 82 | 200  |
| ABP 1680-1000 | 84680000  | 169 | 82 | 1000 |

Scope Of Delivery: Enclosure profile

Notes: C = profile length, special lengths on request.



For accessories, please see the end of the chapter

## Alubos | Enclosure profiles, closed

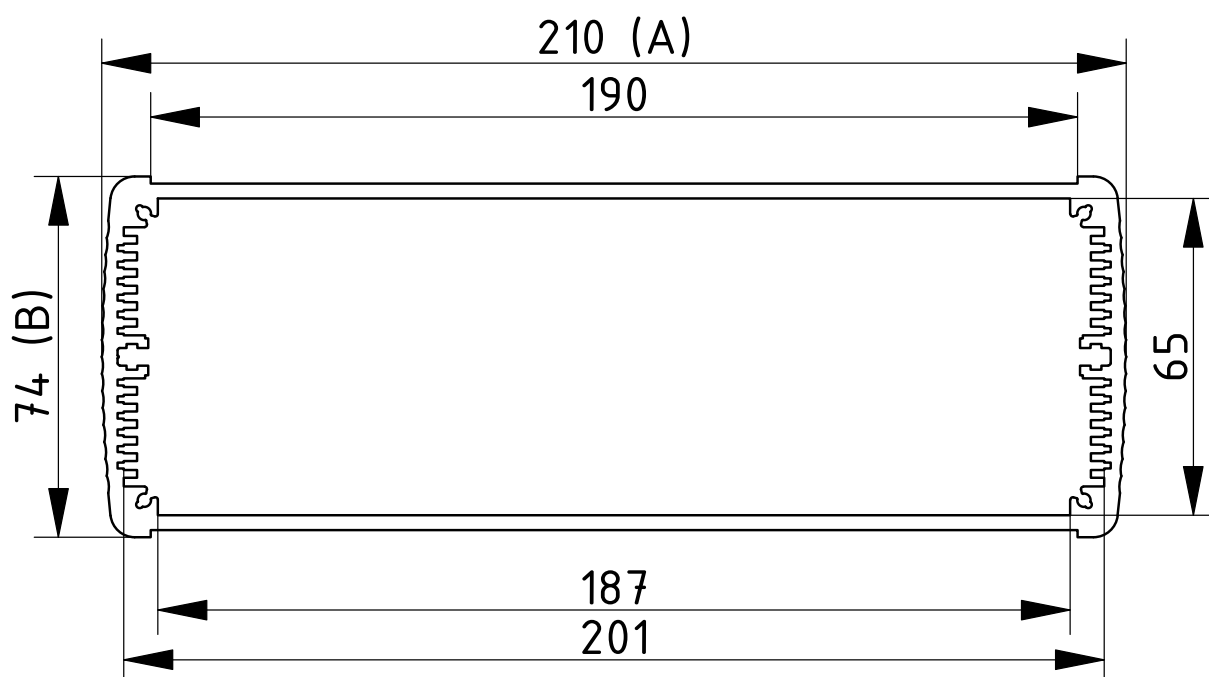


### ABP 2070

| Model         | Order no. | A   | B  | C    |
|---------------|-----------|-----|----|------|
| ABP 2070-0100 | 84207100  | 210 | 74 | 100  |
| ABP 2070-0150 | 84207150  | 210 | 74 | 150  |
| ABP 2070-0200 | 84207200  | 210 | 74 | 200  |
| ABP 2070-1000 | 84207000  | 210 | 74 | 1000 |

Scope Of Delivery: Enclosure profile

Notes: C = profile length, special lengths on request.





**BOPLA**

A Phoenix Mecano Company

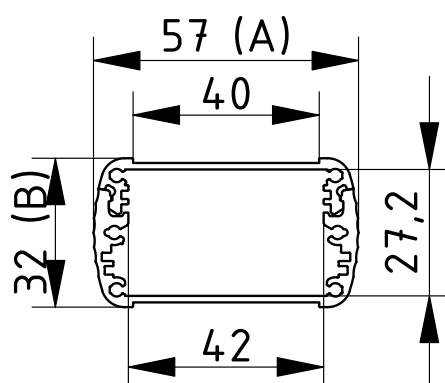
# Alubos | Enclosure profiles, horizontally-divided

## ABPH 600

| Model         | Order no. | A  | B  | C    |
|---------------|-----------|----|----|------|
| ABPH 600-0100 | 84066100  | 57 | 32 | 100  |
| ABPH 600-0150 | 84066150  | 57 | 32 | 150  |
| ABPH 600-0200 | 84066200  | 57 | 32 | 200  |
| ABPH 600-1000 | 84066001  | 57 | 32 | 1000 |

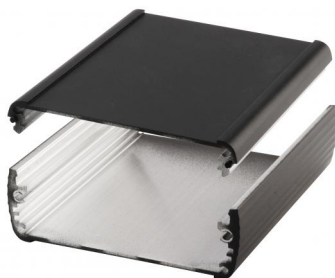
Scope Of Delivery: Enclosure profile, two parts including profile seal

Notes: C = profile length, special lengths on request.



For accessories, please see the end of the chapter

## Alubos | Enclosure profiles, horizontally-divided

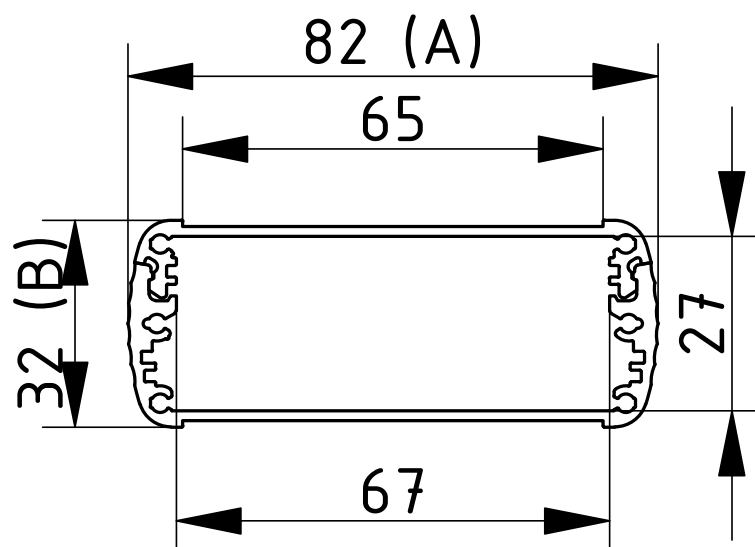


### ABPH 800

| Model         | Order no. | A  | B  | C    |
|---------------|-----------|----|----|------|
| ABPH 800-0100 | 84086100  | 82 | 32 | 100  |
| ABPH 800-0150 | 84086150  | 82 | 32 | 150  |
| ABPH 800-0200 | 84086200  | 82 | 32 | 200  |
| ABPH 800-1000 | 84086001  | 82 | 32 | 1000 |

Scope Of Delivery: Enclosure profile, two parts including profile seal

Notes: C = profile length, special lengths on request.



\* = Available on request

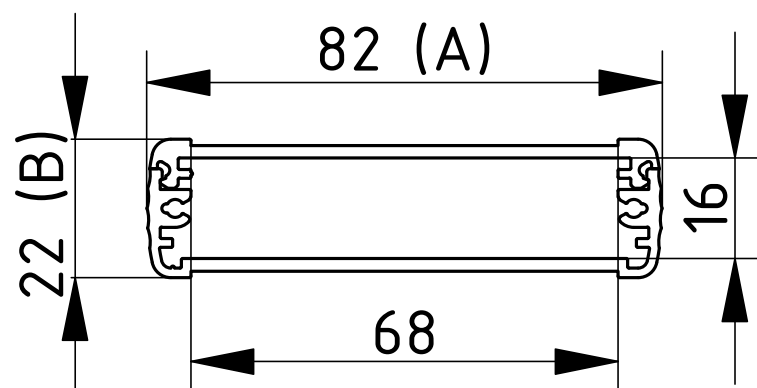
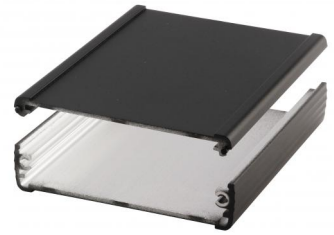
# Alubos | Enclosure profiles, horizontally-divided

## ABPH 820

| Model         | Order no. | A  | B  | C    |
|---------------|-----------|----|----|------|
| ABPH 820-0100 | 84826100  | 82 | 22 | 100  |
| ABPH 820-0150 | 84826150  | 82 | 22 | 150  |
| ABPH 820-0200 | 84826200  | 82 | 22 | 200  |
| ABPH 820-1000 | 84826000  | 82 | 22 | 1000 |

Scope Of Delivery: Enclosure profile, two parts including profile seal

Notes: C = profile length, special lengths on request.



For accessories, please see the end of the chapter

## Alubos | Enclosure profiles, horizontally-divided

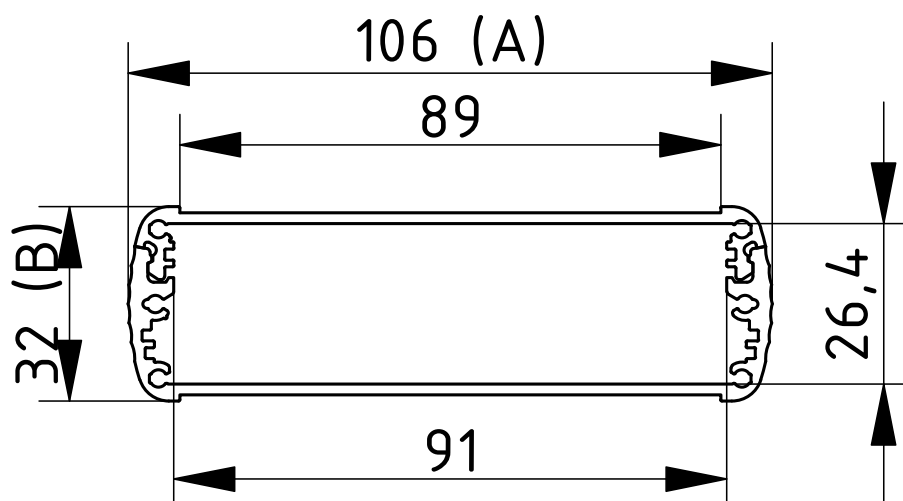


### ABPH 1000

| Model          | Order no. | A   | B  | C    |
|----------------|-----------|-----|----|------|
| ABPH 1000-0100 | 84106100  | 106 | 32 | 100  |
| ABPH 1000-0150 | 84106150  | 106 | 32 | 150  |
| ABPH 1000-0200 | 84106200  | 106 | 32 | 200  |
| ABPH 1000-1000 | 84106001  | 106 | 32 | 1000 |

Scope Of Delivery: Enclosure profile, two parts including profile seal

Notes: C = profile length, special lengths on request.



\* = Available on request



**BOPLA**

A Phoenix Mecano Company

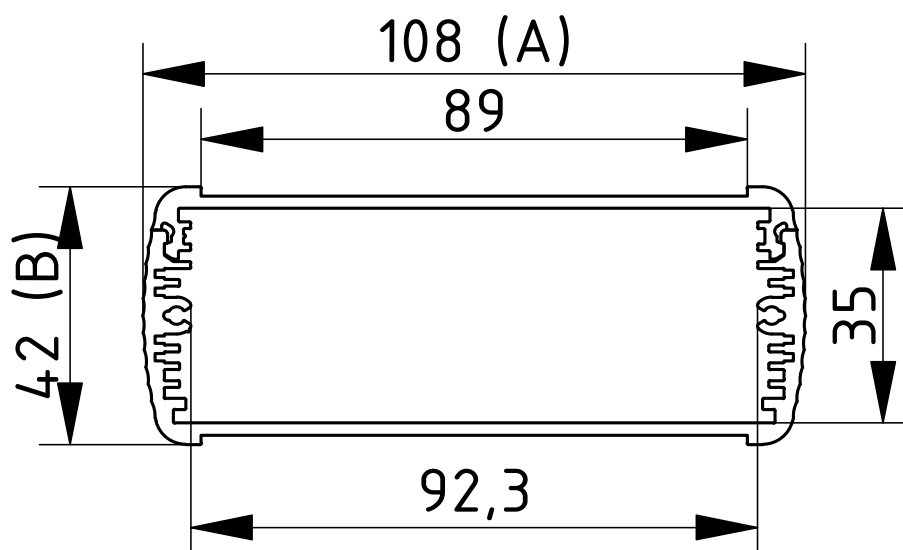
# Alubos | Enclosure profiles, horizontally-divided

## ABPH 1040

| Model          | Order no. | A   | B  | C    |
|----------------|-----------|-----|----|------|
| ABPH 1040-0100 | 84046100  | 108 | 42 | 100  |
| ABPH 1040-0150 | 84046150  | 108 | 42 | 150  |
| ABPH 1040-0200 | 84046200  | 108 | 42 | 200  |
| ABPH 1040-1000 | 84046000  | 108 | 42 | 1000 |

Scope Of Delivery: Enclosure profile, two parts including profile seal

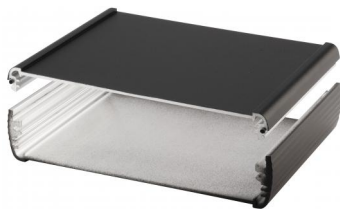
Notes: C = profile length, special lengths on request.



For accessories, please see the end of the chapter



## Alubos | Enclosure profiles, horizontally-divided

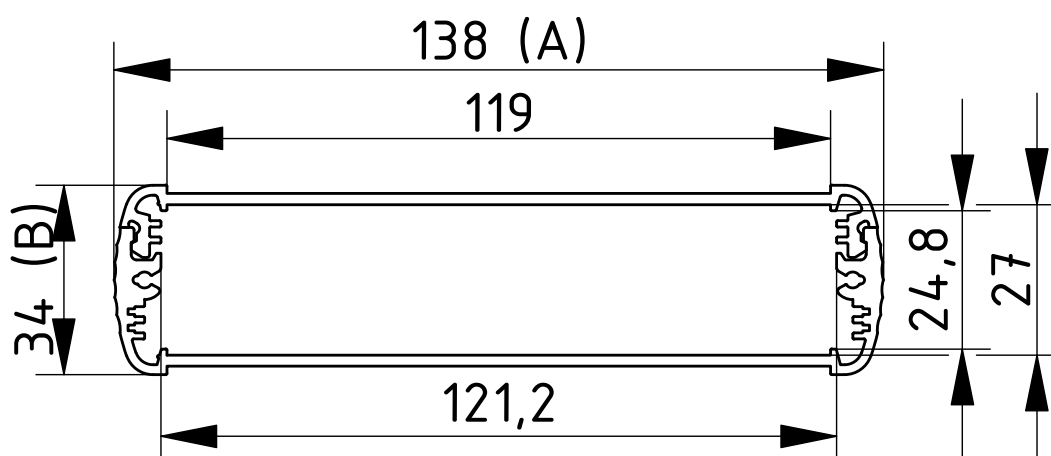


### ABPH 1300

| Model          | Order no. | A   | B  | C    |
|----------------|-----------|-----|----|------|
| ABPH 1300-0100 | 84136100  | 138 | 34 | 100  |
| ABPH 1300-0150 | 84136150  | 138 | 34 | 150  |
| ABPH 1300-0200 | 84136200  | 138 | 34 | 200  |
| ABPH 1300-1000 | 84136000  | 138 | 34 | 1000 |

Scope Of Delivery: Enclosure profile, two parts including profile seal

Notes: C = profile length, special lengths on request.





**BOPLA**

A Phoenix Mecano Company

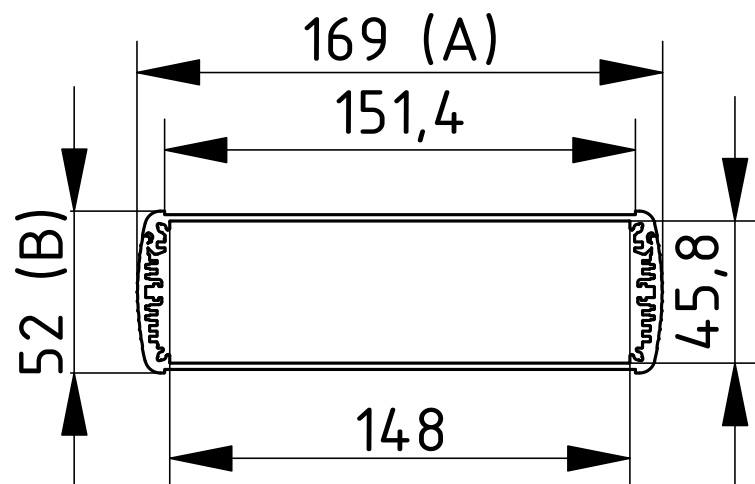
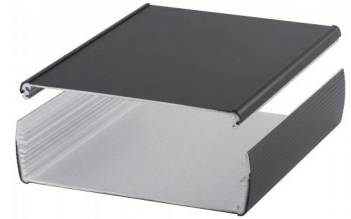
# Alubos | Enclosure profiles, horizontally-divided

## ABPH 1600

| Model          | Order no. | A   | B  | C    |
|----------------|-----------|-----|----|------|
| ABPH 1600-0100 | 84166100  | 169 | 52 | 100  |
| ABPH 1600-0150 | 84166150  | 169 | 52 | 150  |
| ABPH 1600-0200 | 84166200  | 169 | 52 | 200  |
| ABPH 1600-1000 | 84166001  | 169 | 52 | 1000 |

Scope Of Delivery: Enclosure profile, two parts including profile seal

Notes: C = profile length, special lengths on request.



For accessories, please see the end of the chapter

## Alubos | Enclosure profiles, horizontally-divided

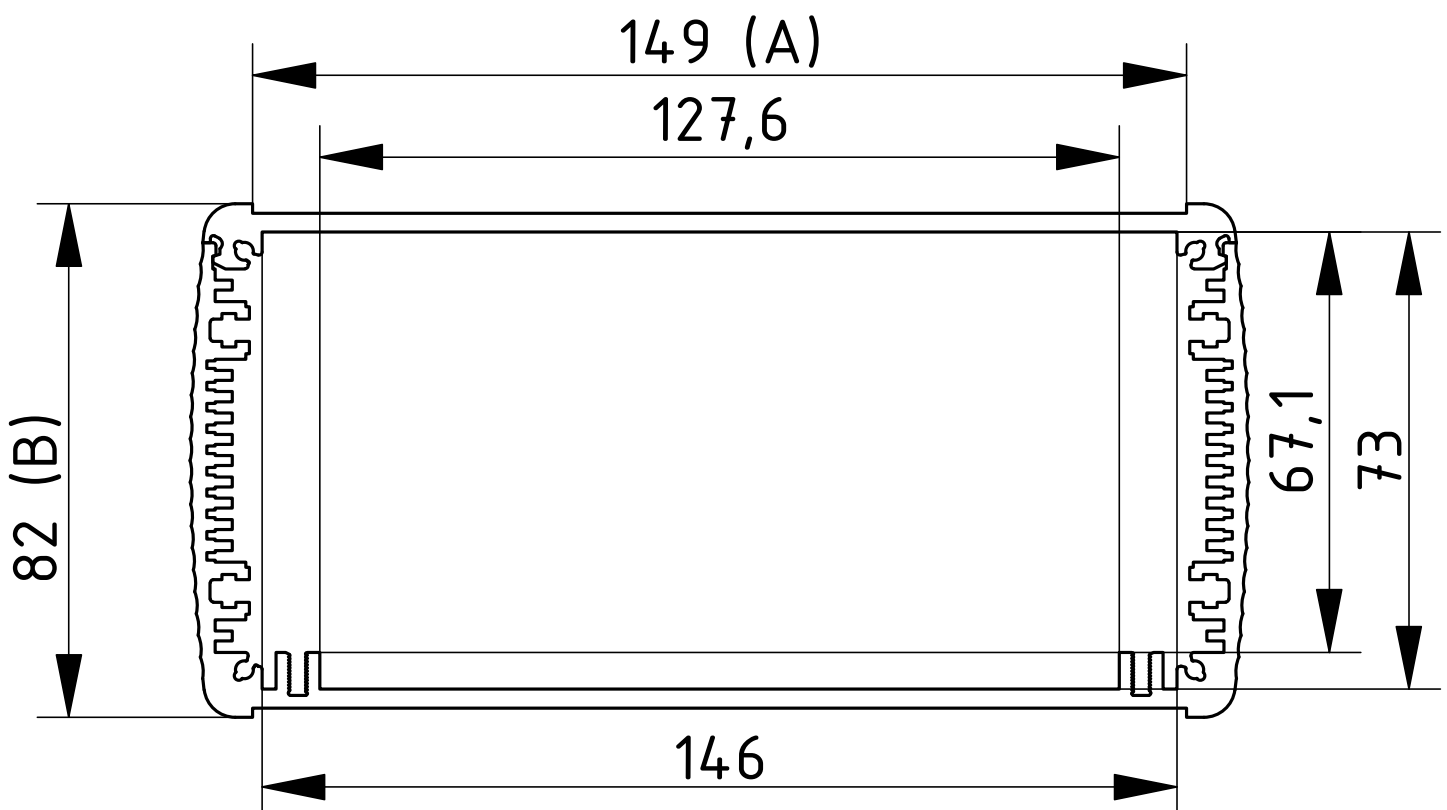


### ABPH 1680

| Model          | Order no. | A   | B  | C    |
|----------------|-----------|-----|----|------|
| ABPH 1680-0100 | 84686100  | 169 | 82 | 100  |
| ABPH 1680-0150 | 84686150  | 169 | 82 | 150  |
| ABPH 1680-0200 | 84686200  | 169 | 82 | 200  |
| ABPH 1680-1000 | 84686000  | 169 | 82 | 1000 |

Scope Of Delivery: Enclosure profile, two parts including profile seal

Notes: C = profile length, special lengths on request.



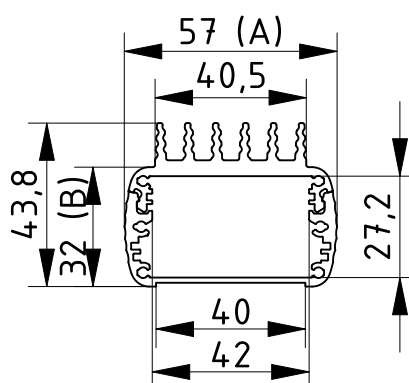
# Alubos | Enclosure profiles horizontally-divided, with cooling element

## ABPH 600 K

| Model           | Order no. | A  | B  | C   |
|-----------------|-----------|----|----|-----|
| ABPH 600-0100 K | 84506100  | 57 | 32 | 100 |
| ABPH 600-0150 K | 84506150  | 57 | 32 | 150 |
| ABPH 600-0200 K | 84506200  | 57 | 32 | 200 |

Scope Of Delivery: Enclosure profile, two parts including profile seal

Notes: C = profile length, special lengths on request.



For accessories, please see the end of the chapter

# Alubos | Enclosure profiles horizontally-divided, with cooling element

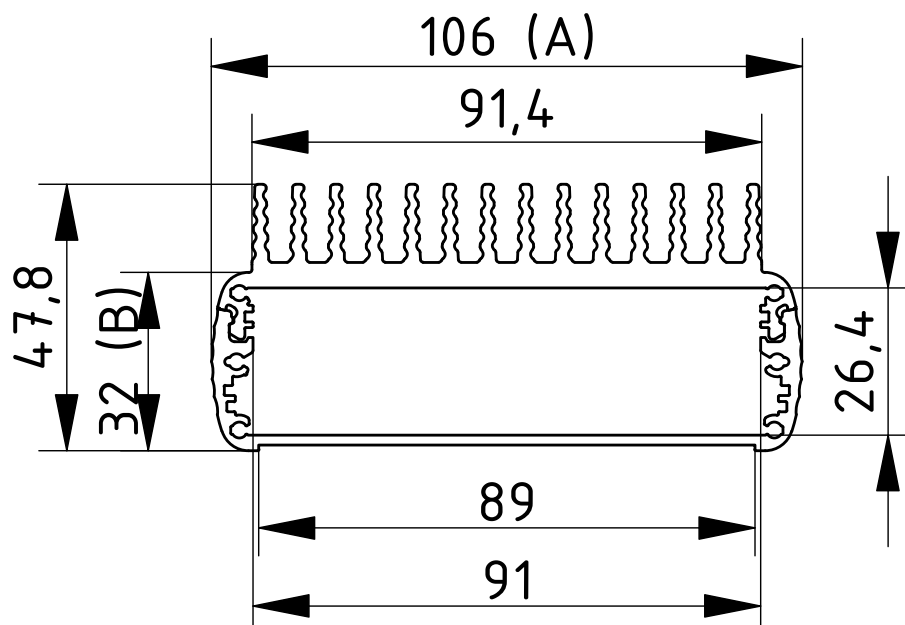


## ABPH 1000 K

| Model            | Order no. | A   | B  | C   |
|------------------|-----------|-----|----|-----|
| ABPH 1000-0100 K | 84510100  | 106 | 32 | 100 |
| ABPH 1000-0150 K | 84510150  | 106 | 32 | 150 |
| ABPH 1000-0200 K | 84510200  | 106 | 32 | 200 |

Scope Of Delivery: Enclosure profile, two parts including profile seal

Notes: C = profile length, special lengths on request.



\* = Available on request

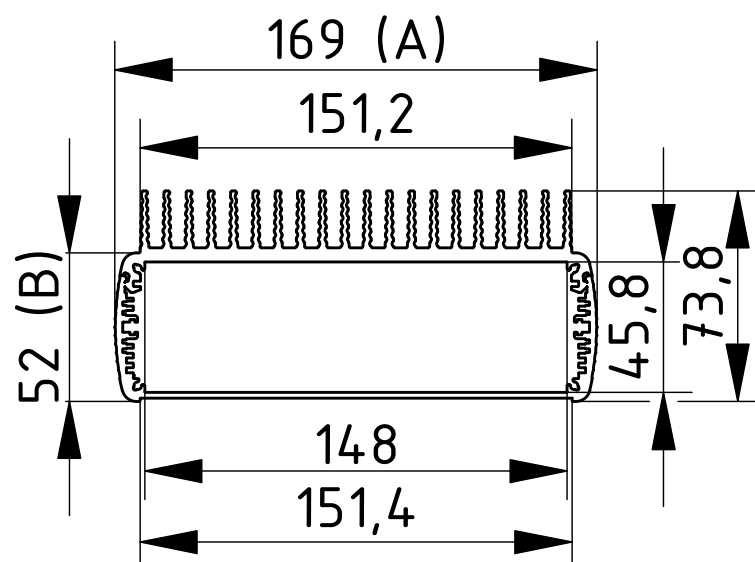
# Alubos | Enclosure profiles horizontally-divided, with cooling element

## ABPH 1600 K

| Model            | Order no. | A   | B  | C   |
|------------------|-----------|-----|----|-----|
| ABPH 1600-0100 K | 84516100  | 169 | 52 | 100 |
| ABPH 1600-0150 K | 84516150  | 169 | 52 | 150 |
| ABPH 1600-0200 K | 84516200  | 169 | 52 | 200 |

Scope Of Delivery: Enclosure profile, two parts including profile seal

Notes: C = profile length, special lengths on request.



For accessories, please see the end of the chapter

# Alubos | enclosure profiles divided horizontally, with wall brackets

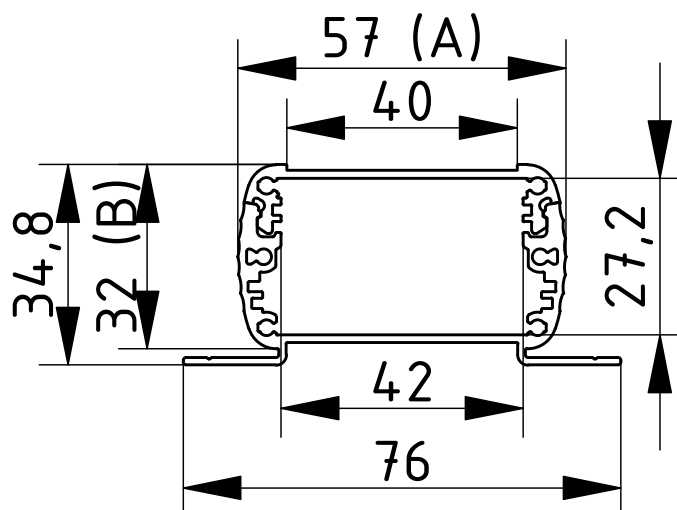
## ABPH 600 WL



| Model            | Order no. | A  | B  | C   |
|------------------|-----------|----|----|-----|
| ABPH 600-0100 WL | 84306100  | 57 | 32 | 100 |
| ABPH 600-0150 WL | 84306150  | 57 | 32 | 150 |
| ABPH 600-0200 WL | 84306200  | 57 | 32 | 200 |

Scope Of Delivery: Enclosure profile, two parts including profile seal

Notes: C = profile length, special lengths on request.



\* = Available on request



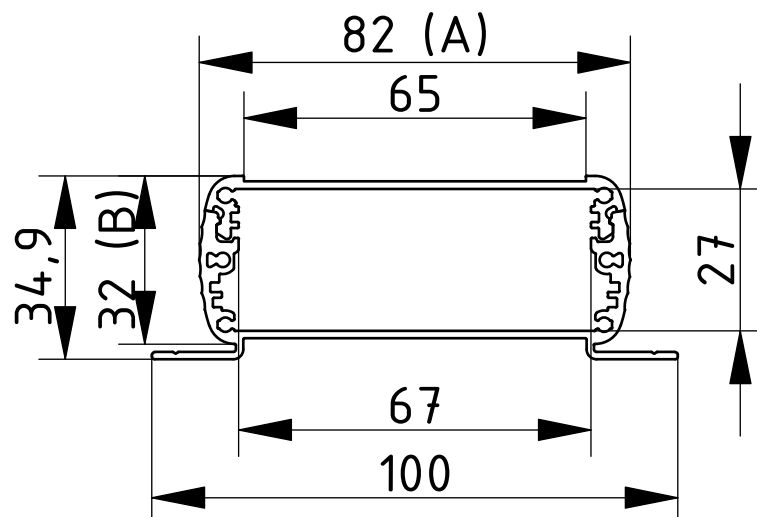
# Alubos | enclosure profiles divided horizontally, with wall brackets

## ABPH 800 WL

| Model            | Order no. | A  | B  | C   |
|------------------|-----------|----|----|-----|
| ABPH 800-0100 WL | 84308100  | 82 | 32 | 100 |
| ABPH 800-0150 WL | 84308150  | 82 | 32 | 150 |
| ABPH 800-0200 WL | 84308200  | 82 | 32 | 200 |

Scope Of Delivery: Enclosure profile, two parts including profile seal

Notes: C = profile length, special lengths on request.



For accessories, please see the end of the chapter



# Alubos | enclosure profiles divided horizontally, with wall brackets

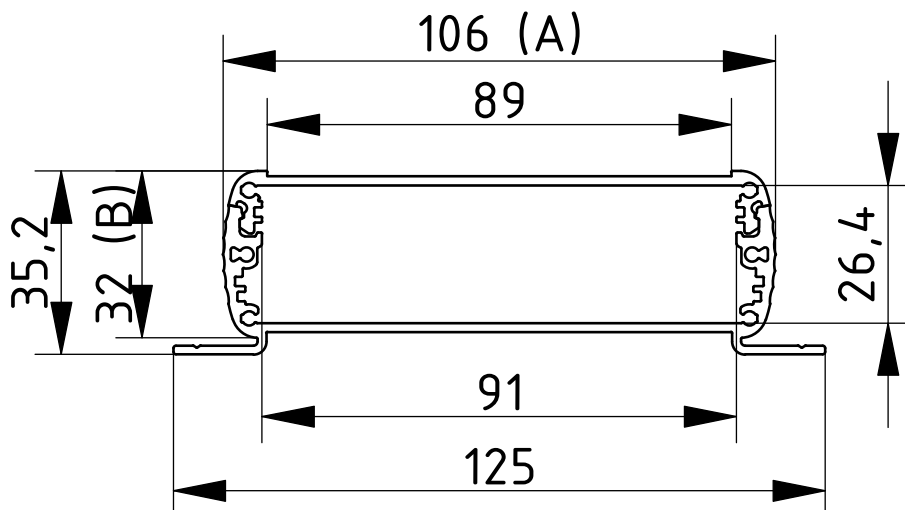


## ABPH 1000 WL

| Model             | Order no. | A   | B  | C   |
|-------------------|-----------|-----|----|-----|
| ABPH 1000-0100 WL | 84310100  | 106 | 32 | 100 |
| ABPH 1000-0150 WL | 84310150  | 106 | 32 | 150 |
| ABPH 1000-0200 WL | 84310200  | 106 | 32 | 200 |

Scope Of Delivery: Enclosure profile, two parts including profile seal

Notes: C = profile length, special lengths on request.



\* = Available on request

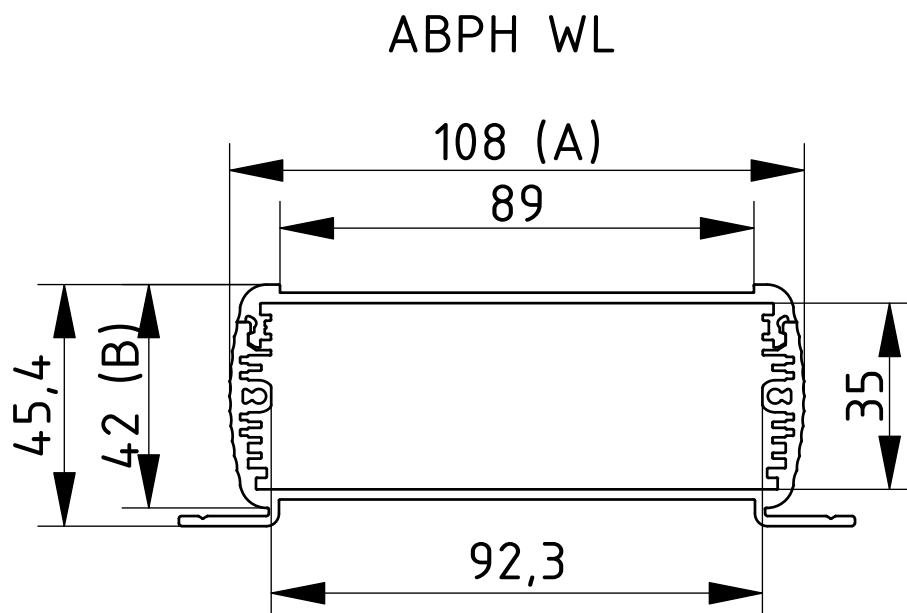
# Alubos | enclosure profiles divided horizontally, with wall brackets

## ABPH 1040 WL

| Model             | Order no. | A   | B  | C   |
|-------------------|-----------|-----|----|-----|
| ABPH 1040-0100 WL | 84304100  | 108 | 42 | 100 |
| ABPH 1040-0150 WL | 84304150  | 108 | 42 | 150 |
| ABPH 1040-0200 WL | 84304200  | 108 | 42 | 200 |

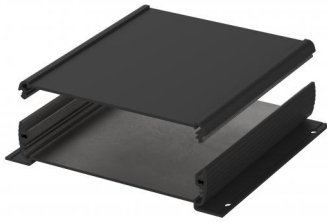
Scope Of Delivery: Enclosure profile, two parts including profile seal

Notes: C = profile length, special lengths on request.



For accessories, please see the end of the chapter

# Alubos | enclosure profiles divided horizontally, with wall brackets

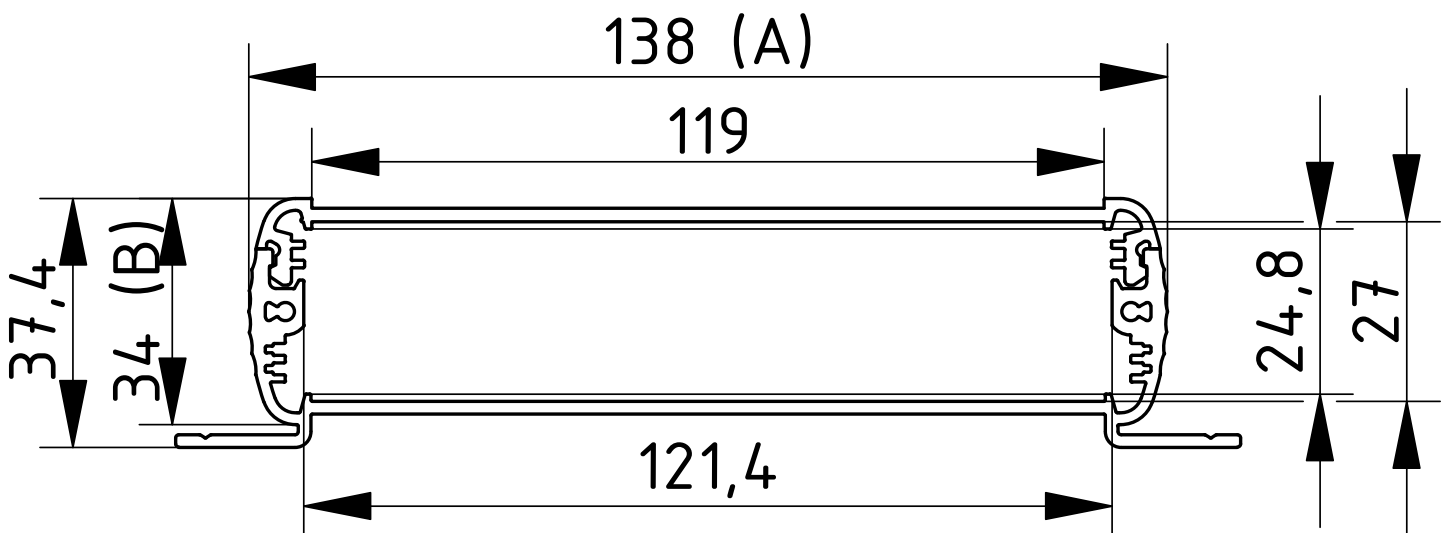


## ABPH 1300 WL

| Model             | Order no. | A   | B  | C   |
|-------------------|-----------|-----|----|-----|
| ABPH 1300-0100 WL | 84313100  | 138 | 34 | 100 |
| ABPH 1300-0150 WL | 84313150  | 138 | 34 | 150 |
| ABPH 1300-0200 WL | 84313200  | 138 | 34 | 200 |

Scope Of Delivery: Enclosure profile, two parts including profile seal

Notes: C = profile length, special lengths on request.



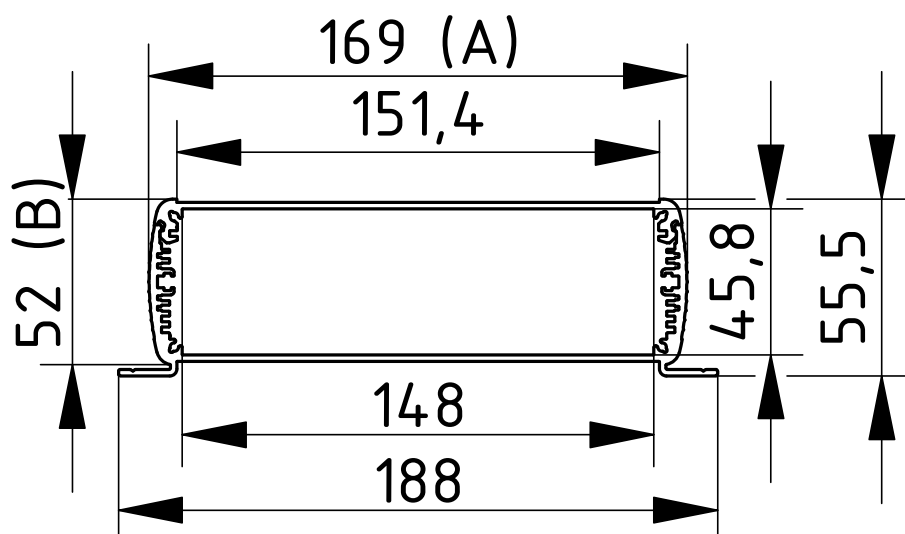
# Alubos | enclosure profiles divided horizontally, with wall brackets

## ABPH 1600 WL

| Model             | Order no. | A   | B  | C   |
|-------------------|-----------|-----|----|-----|
| ABPH 1600-0100 WL | 84316100  | 169 | 52 | 100 |
| ABPH 1600-0150 WL | 84316150  | 169 | 52 | 150 |
| ABPH 1600-0200 WL | 84316200  | 169 | 52 | 200 |

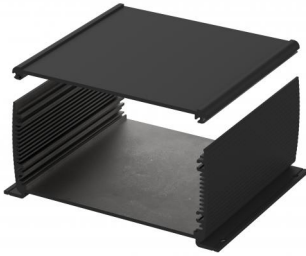
Scope Of Delivery: Enclosure profile, two parts including profile seal

Notes: C = profile length, special lengths on request.



For accessories, please see the end of the chapter

# Alubos | enclosure profiles divided horizontally, with wall brackets

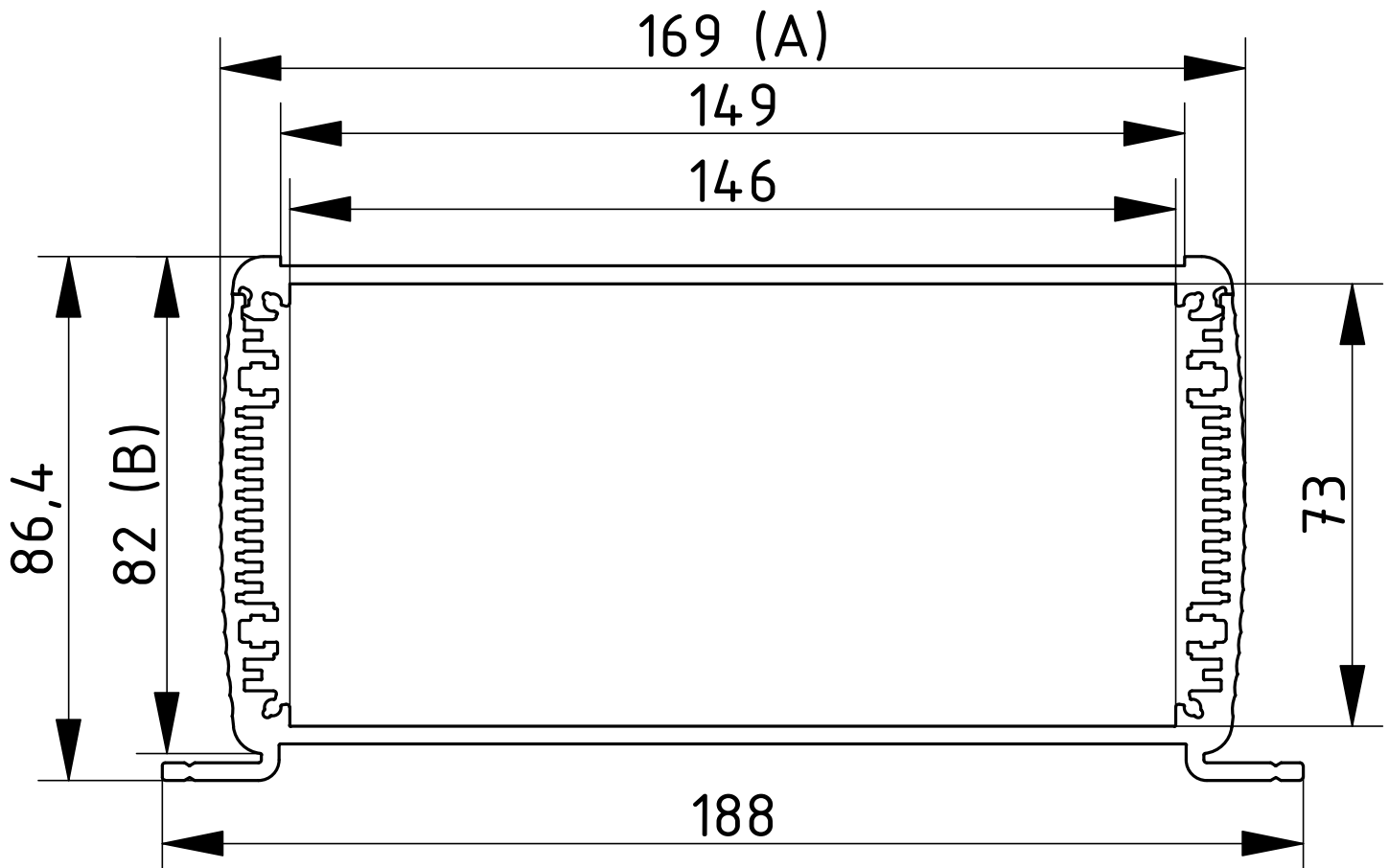


## ABPH 1680 WL

| Model             | Order no. | A   | B  | C   |
|-------------------|-----------|-----|----|-----|
| ABPH 1680-0100 WL | 84368100  | 169 | 82 | 100 |
| ABPH 1680-0150 WL | 84368150  | 169 | 82 | 150 |
| ABPH 1680-0200 WL | 84368200  | 169 | 82 | 200 |

Scope Of Delivery: Enclosure profile, two parts including profile seal

Notes: C = profile length, special lengths on request.



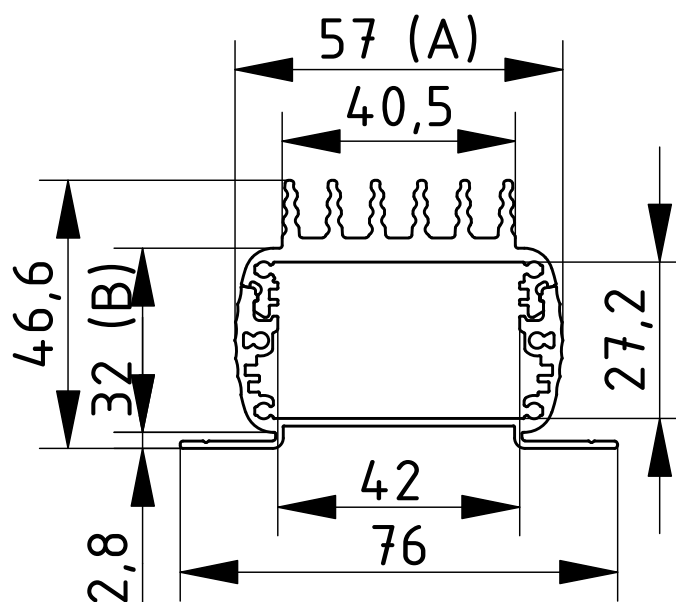
# Alubos | enclosure profiles divided horizontally, with wall brackets and heat sink

## ABPH 600 KWL

| Model             | Order no. | A  | B  | C   |
|-------------------|-----------|----|----|-----|
| ABPH 600-0100 KWL | 84406100  | 57 | 32 | 100 |
| ABPH 600-0150 KWL | 84406150  | 57 | 32 | 150 |
| ABPH 600-0200 KWL | 84406200  | 57 | 32 | 150 |

Scope Of Delivery: Enclosure profile, two parts including profile seal

Notes: C = profile length, special lengths on request.



For accessories, please see the end of the chapter

# Alubos | enclosure profiles divided horizontally, with wall brackets and heat sink

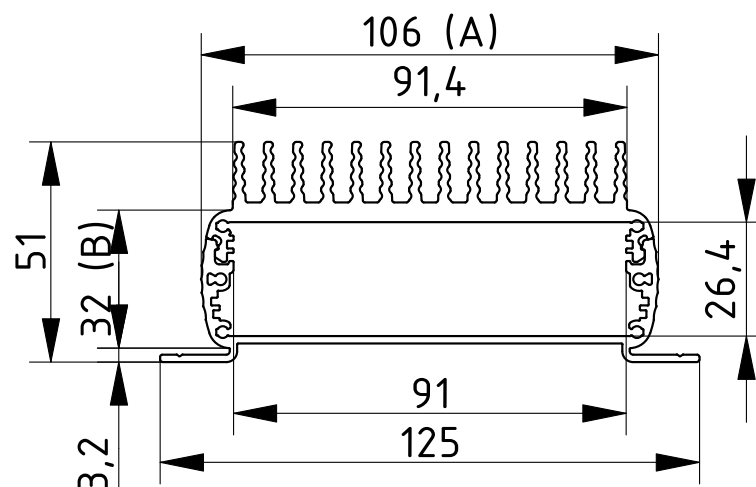


## ABPH 1000 KWL

| Model              | Order no. | A   | B  | C   |
|--------------------|-----------|-----|----|-----|
| ABPH 1000-0100 KWL | 84410100  | 106 | 32 | 100 |
| ABPH 1000-0150 KWL | 84410150  | 106 | 32 | 150 |
| ABPH 1000-0200 KWL | 84410200  | 106 | 32 | 200 |

Scope Of Delivery: Enclosure profile, two parts including profile seal

Notes: C = profile length, special lengths on request.



\* = Available on request

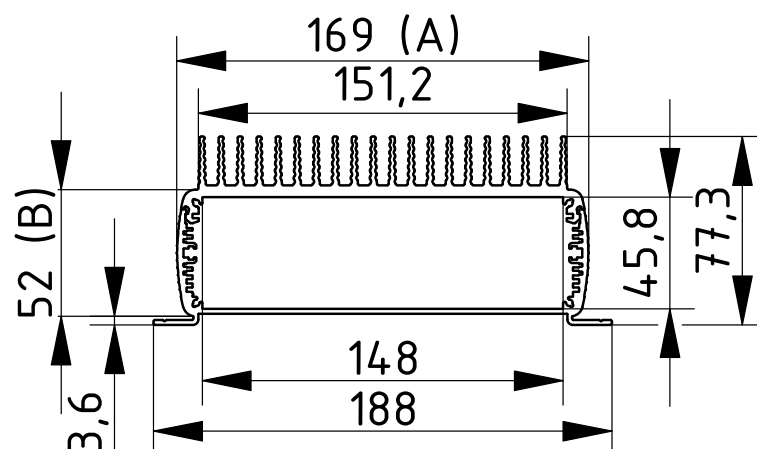
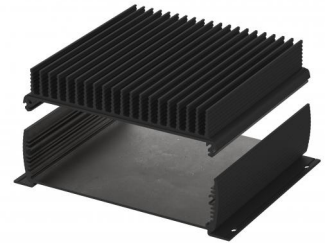
# Alubos | enclosure profiles divided horizontally, with wall brackets and heat sink

## ABPH 1600 KWL

| Model              | Order no. | A   | B  | C   |
|--------------------|-----------|-----|----|-----|
| ABPH 1600-0100 KWL | 84416100  | 169 | 52 | 100 |
| ABPH 1600-0150 KWL | 84416150  | 169 | 52 | 150 |
| ABPH 1600-0200 KWL | 84416200  | 169 | 52 | 200 |

Scope Of Delivery: Enclosure profile, two parts including profile seal

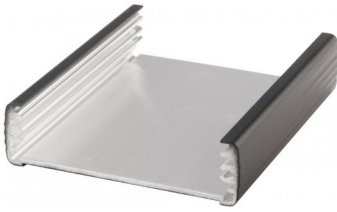
Notes: C = profile length, special lengths on request.



For accessories, please see the end of the chapter



## Alubos | Enclosure profiles, open on one side

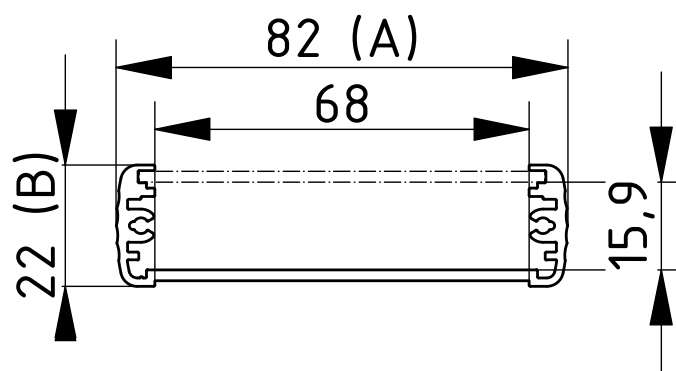


### ABPU 820

| Model         | Order no. | A  | B  | C    |
|---------------|-----------|----|----|------|
| ABPU 820-0100 | 84827100  | 82 | 22 | 100  |
| ABPU 820-0150 | 84827150  | 82 | 22 | 150  |
| ABPU 820-0200 | 84827200  | 82 | 22 | 200  |
| ABPU 820-1000 | 84827000  | 82 | 22 | 1000 |

Scope Of Delivery: Enclosure profile. Please order front panel for ABPU separately.

Notes: C = profile length, special lengths on request.



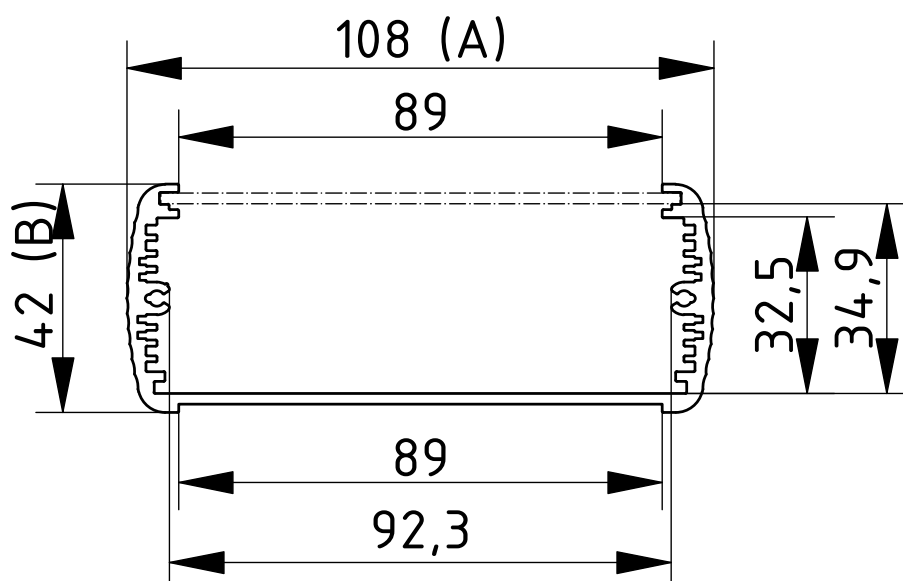
# Alubos | Enclosure profiles, open on one side

## ABPU 1040

| Model          | Order no. | A   | B  | C    |
|----------------|-----------|-----|----|------|
| ABPU 1040-0100 | 84047100  | 108 | 42 | 100  |
| ABPU 1040-0150 | 84047150  | 108 | 42 | 150  |
| ABPU 1040-0200 | 84047200  | 108 | 42 | 200  |
| ABPU 1040-1000 | 84047000  | 108 | 42 | 1000 |

Scope Of Delivery: Enclosure profile. Please order front panel for ABPU separately.

Notes: C = profile length, special lengths on request.



For accessories, please see the end of the chapter

## Alubos | Enclosure profiles, open on one side

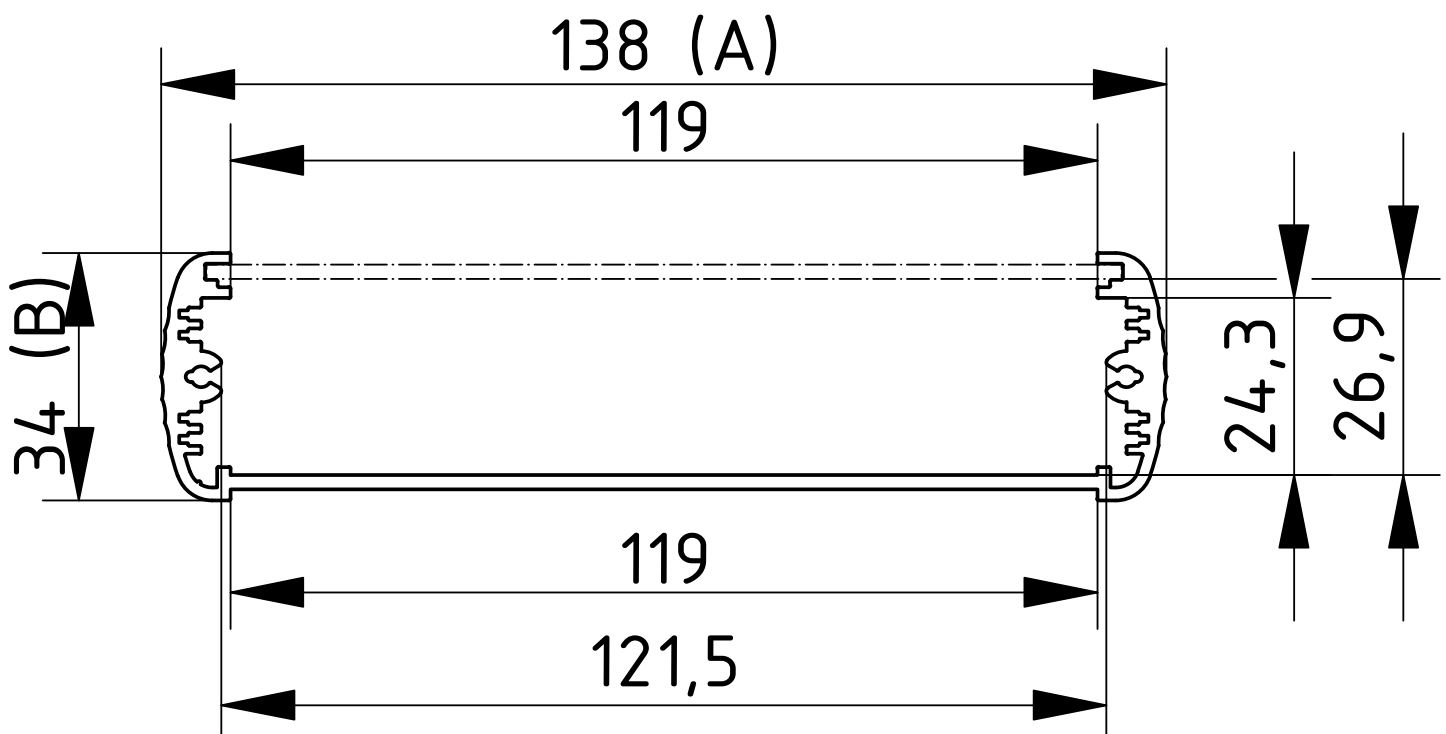


### ABPU 1300

| Model          | Order no. | A   | B  | C    |
|----------------|-----------|-----|----|------|
| ABPU 1300-0100 | 84137100  | 138 | 34 | 100  |
| ABPU 1300-0150 | 84137150  | 138 | 34 | 150  |
| ABPU 1300-0200 | 84137200  | 138 | 34 | 200  |
| ABPU 1300-1000 | 84137000  | 138 | 34 | 1000 |

Scope Of Delivery: Enclosure profile. Please order front panel for ABPU separately.

Notes: C = profile length, special lengths on request.



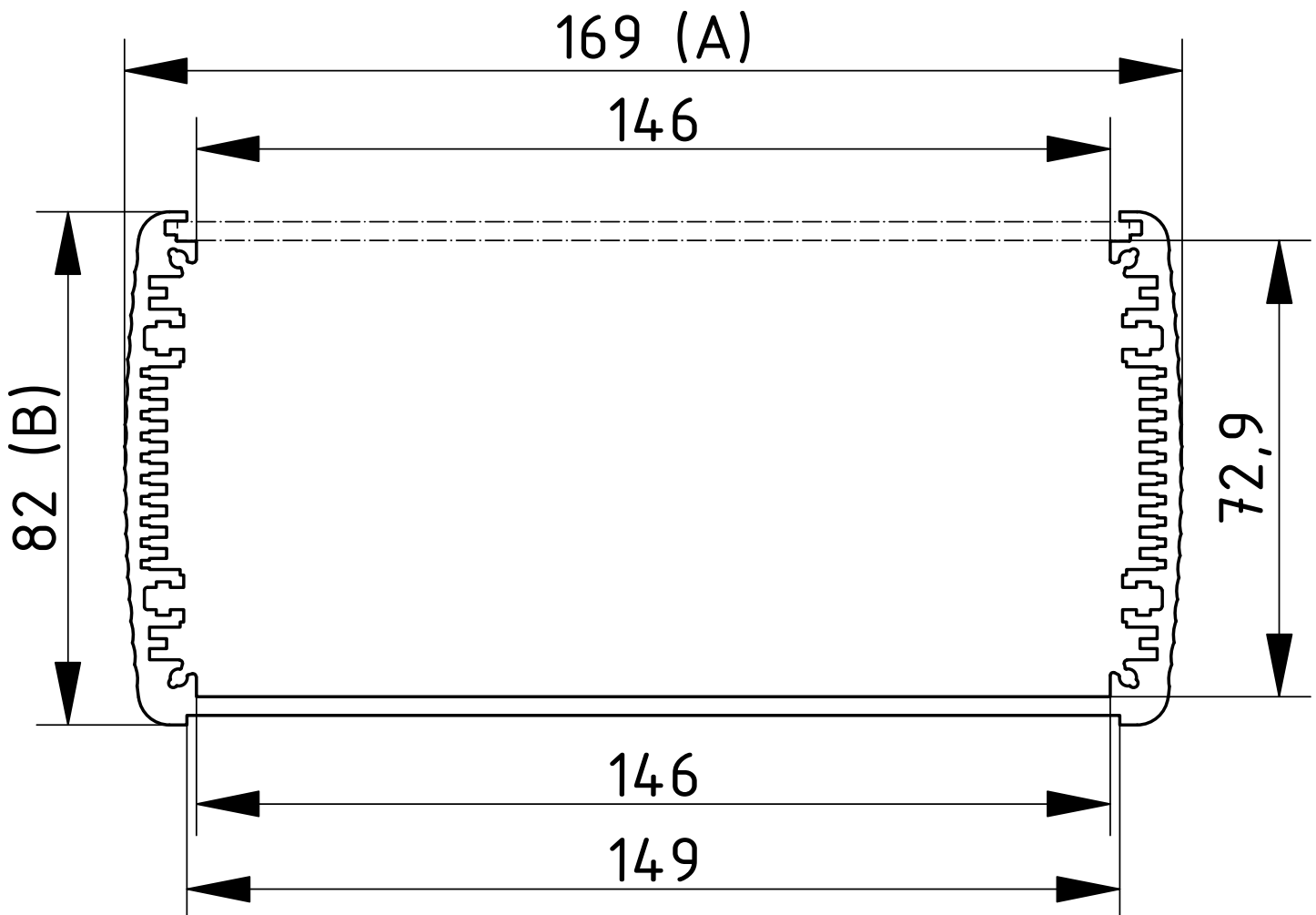
# Alubos | Enclosure profiles, open on one side

## ABPU 1680

| Model          | Order no. | A   | B  | C    |
|----------------|-----------|-----|----|------|
| ABPU 1680-0100 | 84687100  | 169 | 82 | 100  |
| ABPU 1680-0150 | 84687150  | 169 | 82 | 150  |
| ABPU 1680-0200 | 84687200  | 169 | 82 | 200  |
| ABPU 1680-1000 | 84687000  | 169 | 82 | 1000 |

Scope Of Delivery: Enclosure profile. Please order front panel for ABPU separately.

Notes: C = profile length, special lengths on request.



## Alubos | Front panels for enclosure profiles, open on one side



### Front panels, natural-coloured anodised aluminium

| Model              | Order no.       | Note                     |
|--------------------|-----------------|--------------------------|
| ABPU 820-0100 FP2  | <b>84828100</b> | For ABPU 820-0100, 2 mm  |
| ABPU 820-0150 FP2  | <b>84828150</b> | For ABPU 820-0150, 2 mm  |
| ABPU 820-0200 FP2  | <b>84828200</b> | For ABPU 820-0200        |
| ABPU 820-1000 FP2  | <b>84828000</b> | For ABPU 820-1000, 2 mm  |
| ABPU 1040-0100 FP2 | <b>84048100</b> | For ABPU 1040-0100, 2 mm |
| ABPU 1040-0150 FP2 | <b>84048150</b> | For ABPU 1040-0150, 2 mm |
| ABPU 1040-0200 FP2 | <b>84048200</b> | For ABPU 1040-0200, 2 mm |
| ABPU 1040-1000 FP2 | <b>84048000</b> | For ABPU 1040-1000, 2 mm |
| ABPU 1300-0100 FP2 | <b>84138100</b> | For ABPU 1300-0100       |
| ABPU 1300-0150 FP2 | <b>84138150</b> | For ABPU 1300-0150, 2 mm |
| ABPU 1300-0200 FP2 | <b>84138200</b> | For ABPU 1300-0200, 2 mm |
| ABPU 1300-1000 FP2 | <b>84138000</b> | For ABPU 1300-1000, 2 mm |
| ABPU 1680-0100 FP3 | <b>84689100</b> | For ABPU 1680-0100, 3 mm |
| ABPU 1680-0150 FP3 | <b>84689150</b> | For ABPU 1680-0150, 3 mm |
| ABPU 1680-0200 FP3 | <b>84689200</b> | For ABPU 1680-0200, 3 mm |
| ABPU 1680-1000 FP3 | <b>84689000</b> | For ABPU 1680-1000, 3 mm |

Scope Of Delivery: 1 front panel

# Alubos | End cover

## End cover

| Model    | Order no. | Note        |
|----------|-----------|-------------|
| ABD 600  | 84061000  | For AB 600  |
| ABD 800  | 84081000  | For AB 800  |
| ABD 820  | 84821000  | For AB 820  |
| ABD 1000 | 84101000  | For AB 1000 |
| ABD 1040 | 84041000  | For AB 1040 |
| ABD 1300 | 84131000  | For AB 1300 |
| ABD 1600 | 84161000  | For AB 1600 |
| ABD 1680 | 84168100  | For AB 1680 |
| ABD 2070 | 84271000  | For AB 2070 |

Scope Of Delivery: Lid, black seal, screws, black screw covers



## Mounting lid with removable aluminium cap

| Model       | Order no. | Note        |
|-------------|-----------|-------------|
| ABM 600 AL  | 84062000  | For AB 600  |
| ABM 800 AL  | 84082000  | For AB 800  |
| ABM 1000 AL | 84102000  | For AB 1000 |

Scope Of Delivery: Mounting lid, aluminium profile cap, black seal, screws, black screw covers



## Mounting lid with hinged aluminium flap

| Model        | Order no. | Note        |
|--------------|-----------|-------------|
| ABM 600 SAL  | 84064000  | For AB 600  |
| ABM 800 SAL  | 84084000  | For AB 800  |
| ABM 1000 SAL | 84104000  | For AB 1000 |
| ABM 1040 SAL | 84044000  | For AB 1040 |
| ABM 1300 SAL | 84134000  | For AB 1300 |

Scope Of Delivery: Mounting lid, hinged aluminium flap, black seal, screws, black screw covers



## Mounting lid with removable aluminium cap and compartment for 9V block battery

| Model          | Order no. | Note        |
|----------------|-----------|-------------|
| ABM 600 AL BE  | 84062100  | For AB 600  |
| ABM 800 AL BE  | 84082100  | For AB 800  |
| ABM 1000 AL BE | 84102100  | For AB 1000 |

Scope Of Delivery: Mounting lid, aluminium profile cap, compartment for 9V block battery (6LR61, 6AM6, 522), black seal, screws, black screw covers

Notes: Additional battery compartments available on request.



## Mounting lid with hinged aluminium flap and compartment for 9V block battery

| Model           | Order no. | Note        |
|-----------------|-----------|-------------|
| ABM 600 SAL-BE  | 84064100  | For AB 600  |
| ABM 800 SAL-BE  | 84084100  | For AB 800  |
| ABM 1000 SAL-BE | 84104100  | For AB 1000 |

Scope Of Delivery: Mounting lid, hinged aluminium flap, compartment for 9 V block battery (6LR61, 6AM6, 522), black seal, screws, black screw covers

Notes: Additional battery compartments available on request.



## Alubos | End cover



### Mounting lid with infrared-permissive plastic cap

| Model       | Order no.       | Note        |
|-------------|-----------------|-------------|
| ABM 600 IR  | <b>84063000</b> | For AB 600  |
| ABM 800 IR  | <b>84083000</b> | For AB 800  |
| ABM 1000 IR | <b>84103000</b> | For AB 1000 |

Scope Of Delivery: Mounting lid, infrared-permissive plastic cap, black seal, screws, black screw covers

Notes: Additional battery compartments available on request.



### Mounting lid with infrared-permissive plastic cap and compartment for 9V block battery

| Model          | Order no.        | Note        |
|----------------|------------------|-------------|
| ABM 600 IR BE  | <b>84063100*</b> | For AB 600  |
| ABM 800 IR BE  | <b>84083100*</b> | For AB 800  |
| ABM 1000 IR BE | <b>84103100*</b> | For AB 1000 |

Scope Of Delivery: Mounting lid, infrared-permissive plastic cap, compartment for 9 V block battery (6LR61, 6AM6, 522), black seal, screws, black screw covers

Notes: Additional battery compartments available on request.

# Alubos | Seals

## Seals, fire red

| Model        | Order no. | Note        |
|--------------|-----------|-------------|
| DI 600-3000  | 84200611  | For AB 600  |
| DI 800-3000  | 84200811  | For AB 800  |
| DI 820-3000  | 84208211  | For AB 820  |
| DI 1000-3000 | 84201011  | For AB 1000 |
| DI 1040-3000 | 84200411  | For AB 1040 |
| DI 1300-3000 | 84201311  | For AB 1300 |
| DI 1600-3000 | 84201616  | For AB 1600 |
| DI 1680-3000 | 84206811  | For AB 1680 |
| DI 2070-3000 | 84202711  | For AB 2070 |

Scope Of Delivery: 10 seals



## Seals, ultramarine

| Model        | Order no. | Note        |
|--------------|-----------|-------------|
| DI 600-5002  | 84200614  | For AB 600  |
| DI 800-5002  | 84200814  | For AB 800  |
| DI 820-5002  | 84208214  | For AB 820  |
| DI 1000-5002 | 84201014  | For AB 1000 |
| DI 1040-5002 | 84200414  | For AB 1040 |
| DI 1300-5002 | 84201314  | For AB 1300 |
| DI 1600-5002 | 84201614  | For AB 1600 |
| DI 1680-5002 | 84206814  | For AB 1680 |
| DI 2070-5002 | 84202714  | For AB 2070 |

Scope Of Delivery: 10 seals



## Seals, rape yellow

| Model        | Order no. | Note        |
|--------------|-----------|-------------|
| DI 600-1021  | 84200612  | For AB 600  |
| DI 800-1021  | 84200812  | For AB 800  |
| DI 820-1021  | 84208212  | For AB 820  |
| DI 1000-1021 | 84201012  | For AB 1000 |
| DI 1040-1021 | 84200412  | For AB 1040 |
| DI 1300-1021 | 84201312  | For AB 1300 |
| DI 1600-1021 | 84201612  | For AB 1600 |
| DI 1680-1021 | 84206812  | For AB 1680 |
| DI 2070-1021 | 84202712  | For AB 2070 |

Scope Of Delivery: 10 seals



## Seals, patina green

| Model        | Order no. | Note        |
|--------------|-----------|-------------|
| DI 600-6000  | 84200613  | For AB 600  |
| DI 800-6000  | 84200813  | For AB 800  |
| DI 820-6000  | 84208213  | For AB 820  |
| DI 1000-6000 | 84201013  | For AB 1000 |
| DI 1040-6000 | 84200413  | For AB 1040 |
| DI 1300-6000 | 84201313  | For AB 1300 |
| DI 1600-6000 | 84201613  | For AB 1600 |
| DI 1680-6000 | 84206813  | For AB 1680 |
| DI 2070-6000 | 84202713  | For AB 2070 |

Scope Of Delivery: 10 seals





## Alubos | Seals



### Seals UL 94 V0

| Model      | Order no. | Note        |
|------------|-----------|-------------|
| DI 600-V0  | 84200619* | For AB 600  |
| DI 800-V0  | 84200819* | For AB 800  |
| DI 820-V0  | 84208219* | For AB 820  |
| DI 1000-V0 | 84201019* | For AB 1000 |
| DI 1040-V0 | 84200419* | For AB 1040 |
| DI 1300-V0 | 84201319* | For AB 1300 |
| DI 1600-V0 | 84201619* | For AB 1600 |
| DI 1680-V0 | 84206819* | For AB 1680 |
| DI 2070-V0 | 84202719* | For AB 2070 |

Scope Of Delivery: 10 seals



### EMC seals

| Model       | Order no. | Note        |
|-------------|-----------|-------------|
| DI 600-EMV  | 84200615  | For AB 600  |
| DI 800-EMV  | 84200815  | For AB 800  |
| DI 820-EMV  | 84208215  | For AB 820  |
| DI 1000-EMV | 84201015  | For AB 1000 |
| DI 1040-EMV | 84200415  | For AB 1040 |
| DI 1300-EMV | 84201315  | For AB 1300 |
| DI 1600-EMV | 84201615  | For AB 1600 |
| DI 1680-EMV | 84206815  | For AB 1680 |
| DI 2070-EMV | 84202715  | For AB 2070 |

Scope Of Delivery: 10 seals



### Impact protection seals, fire red

| Model          | Order no. | Note         |
|----------------|-----------|--------------|
| DI-S 1040-3000 | 84200430  | For ABD 1040 |

Scope Of Delivery: 2 seals

# Alubos | Accessories

## Handle / Tip-up bow, hinged

| Model      | Order no. | Note             |
|------------|-----------|------------------|
| AB 1600 HS | 84162000  | For AB 1600/1680 |
| AB 2000 HS | 84200000  | For AB 2070      |

Scope Of Delivery: Handle side parts (PA6), seals, screws

Scope of delivery HSP: profile (aluminium)

Notes: Fixed 30° handle locking position. The necessary processing, plus versions for fitting to the lids, on request.

The maximum load is 300 N.



## Wall brackets, sheet steel

| Model   | Order no. | Note                     |
|---------|-----------|--------------------------|
| AB-WL   | 84005000  | For AB 600/800/1000/1300 |
| AB-WL1  | 84006001  | For AB 820               |
| AB-WL2  | 84007000  | For AB 1040              |
| AB-WL 3 | 84008000  | For AB 1600/1680/2070    |

Scope Of Delivery: Wall brackets, sealing rings, screws



## Wall brackets, adjustable, sheet steel

| Model       | Order no. | Note             |
|-------------|-----------|------------------|
| AB-600 WLV  | 84065000  | For AB 600       |
| AB-800 WLV  | 84085000  | For AB 800/820   |
| AB-1000 WLV | 84105000  | For AB 1000/1040 |

Scope Of Delivery: Wall brackets (2 top parts, 2 bottom parts), 2 metric screws, 2 serrated lock washers, 4 sealing rings, 4 screws 18mm long for ABD lid, 4 screws (22mm long for ABM lid)

Notes: The enclosures can be tilted at angles between 0° and 90° (80° with AB 1040).



## Mounting clamps

| Model       | Order no. | Note                |
|-------------|-----------|---------------------|
| AB 600 MKL  | 84006600  | For AB 600          |
| AB 800 MKL  | 84006400  | For AB 800          |
| AB 1000 MKL | 84006500  | For AB 1000         |
| AB 1040 MKL | 84006510  | For AB 1040         |
| AB-MKL      | 84006300  | For AB 600/800/1000 |

Scope Of Delivery: 1 mounting clamp (stainless spring steel)

Notes: We recommend using two clamps for profile lengths of 150 mm and over. Direct wall mounting of the clamps is possible with all versions. On request, the mounting clamps can also be supplied coated. Mounting clamp for other profile sizes on request.



## Self-adhesive rubber feet, black

| Model   | Order no. | Colour | Note                      |
|---------|-----------|--------|---------------------------|
| AB - GF | 84006700  | Black  | Polyurethane, 65-75 Shore |

Scope Of Delivery: 4 rubber feet

