

## Features

- Noncorrosive
- Easy assembly
- Low weight
- Fully safe



## FOR WLP350, MWLP350 SERIES

### Derating Guidelines

WLP350/MWLP350: De-rate to 70% of values mentioned in temperature de-rating curves of open frame models at all load and ambient conditions.

### Contents

Mounting Base, Cover, Insulator, Fixing Screws

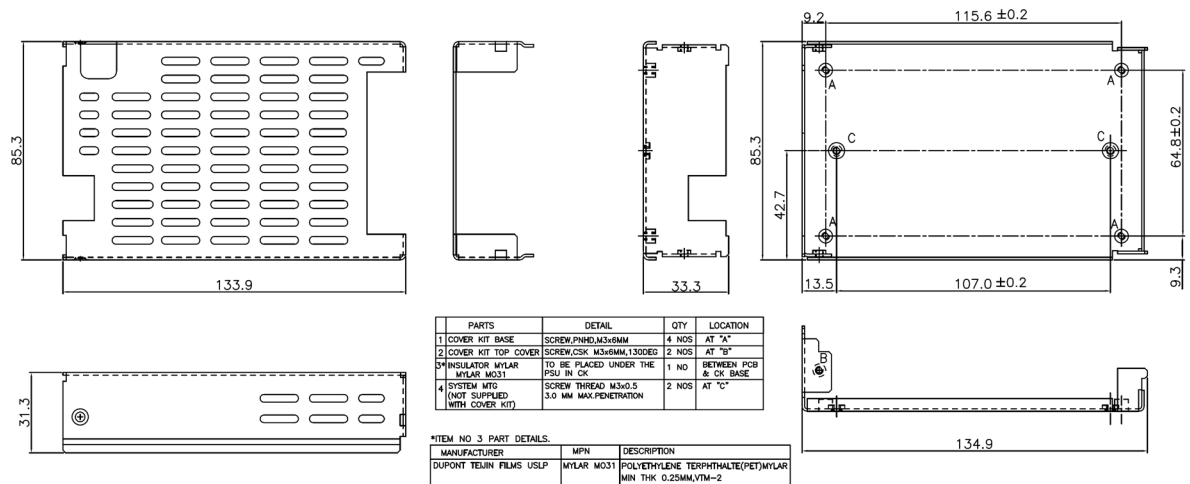
### Mechanical Dimensions

Cover and Base Material EG(Zintec)/CRCA/GI 1.0mm thick (Powder coating/ Passivation/ ED coating black)

Marked A: PCB MTG; B: COVER MTG; C: SYSTEM MTG, M3 Thread

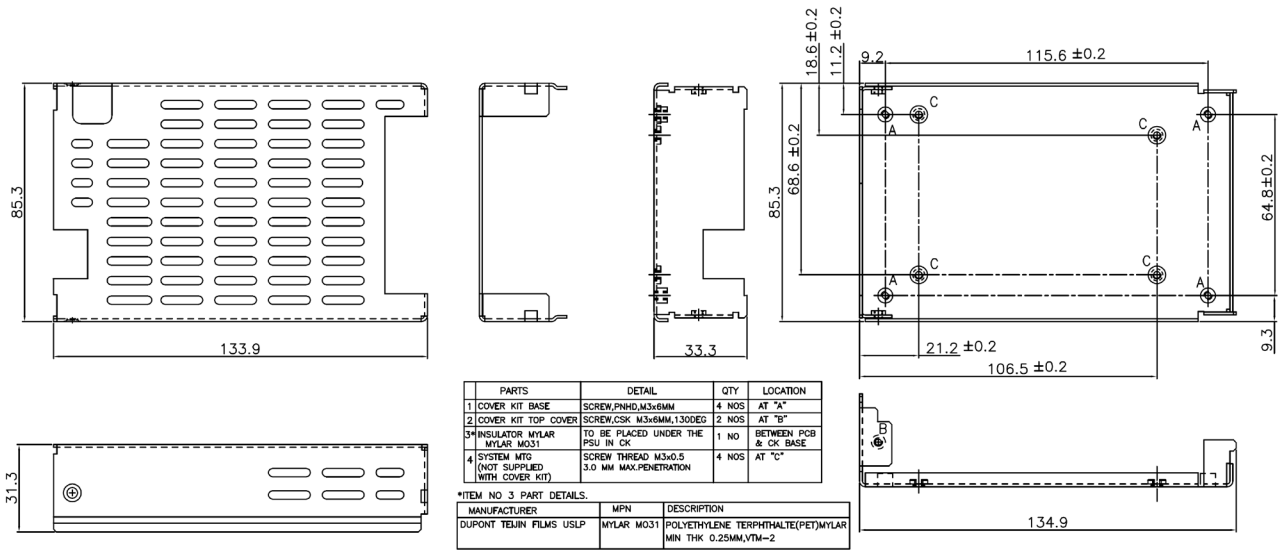
All dimensions are in mm. General tolerance  $\pm 1.0$

## Mechanical Drawing



WLP350-CK.  
MECHANICAL OUTLINE DIMENSIONS.

## Mechanical Drawing



WLP350-CK1.  
MECHANICAL OUTLINE DIMENSIONS.